

MINI EXCAVATOR

X30 MINI EXCAVATOR ROTARY BRUSH CUTTER

Available widths 42" & 48"

Cut up to 4" diameter trees and access hard to reach areas for a maintained finish.

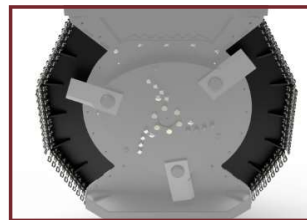
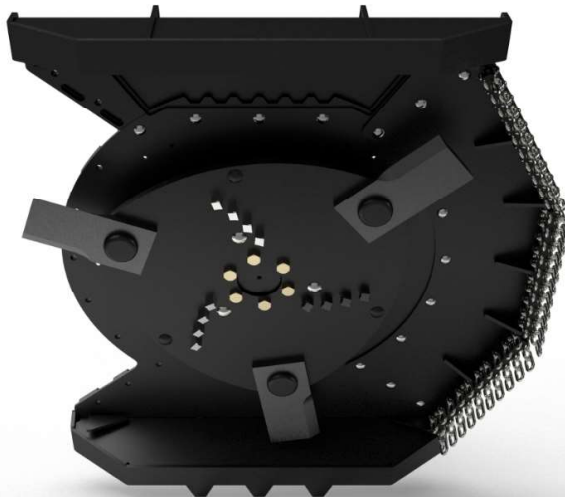


EATON
Char-Lynn

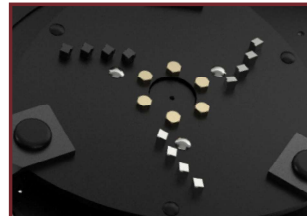
Do not operate cutter without a shatterproof cab on excavator.

4.0" CUT CAPACITY	42" & 48" CUT WIDTHS	42" MODEL 15-28 GPM TWO MOTOR OPTIONS	48" MODEL 15-38 GPM FOUR MOTOR OPTIONS
-----------------------------	------------------------------------	--	---

DETAIL UNDER DECK
W/ OPTIONAL SIDE CURTAIN



**OPTION:
SIDE CURTAIN(S)**
Choose one or two bolt-on
side curtains to reduce
debris thrown.

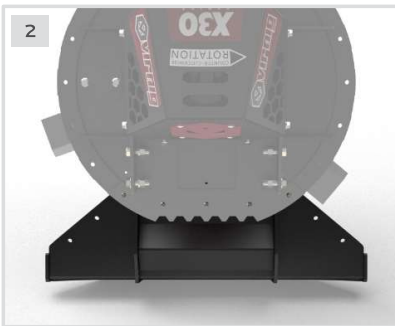


**OPTION:
CARBIDE TEETH**
Shred material for a
better finish.



**OPTION: BOLT-ON
HANGER BRACKET**
• Many options available!
• *Note: Hanger bracket is
not included.*

MINI EXCAVATOR



- 1. NO CASE DRAIN REQUIRED. DIRECT DRIVE EATON® MOTOR WITH RELIEF VALVE PROTECTION
- 2. UNIQUE BOLT-ON FRONT DECK, REMOVE FOR 270° BLADE ENGAGEMENT
- 3. BOLT-ON MOUNTING INTERFACE FOR QUICKLY CHANGING HANGER BRACKETS

- 4. ROUNDED FLYWHEEL WITH 3 DOUBLE-SIDED BLADES BOUNCES OFF STUMPS
- 5. SERRATED REAR DECK FOR BACK DRAGGING BRUSH & GRUBBING STUMPS
- 6. STANDARD MOTOR GUARD & SPINDLE GUARD
- 7. VARIOUS HANGER BRACKETS AVAILABLE TO FIT MOST EXCAVATOR BRANDS

	MODEL	XBC42	XBC48
Cut Width (in.)		42.0	48.0
Overall Width Without Sides / With Sides (in.)		38.8 / 52.0	44.9 / 58.0
Overall Height (in.)		20.5	21.5
Overall Depth (in.)		52.5	58.5
Deck Height (in.)			5.8
Minimum Cut Height With Bolt-On Front (in.)			2.0
Cutting Capacity, Diameter (in.)			4.0
Deck Thickness: Top / Side (in.)			0.25
Recommended Flow Rate (GPM)		15-25 / 22-28	15-22 / 22-28 / 28-35 / 35-38
Approximate Weight Without Sides / With Sides (lbs)		700 ¹ / 830 ¹	815 ¹ / 965 ¹
Recommended Mini Excavator Lift Capacity Over Side at Max Reach		Greater than 700 lbs ²	Greater than 815 lbs ³
Recommended Mini Excavator Weight (lbs)		8900-26000	11000-26000
Number of Teeth (Optional)		12	18

¹Weight does not include hanger bracket or pins.

²Greater than 765 lbs with one side curtain and 830 lbs with both side curtains.

³Greater than 890 lbs with one side curtain and 965 lbs with both side curtains.