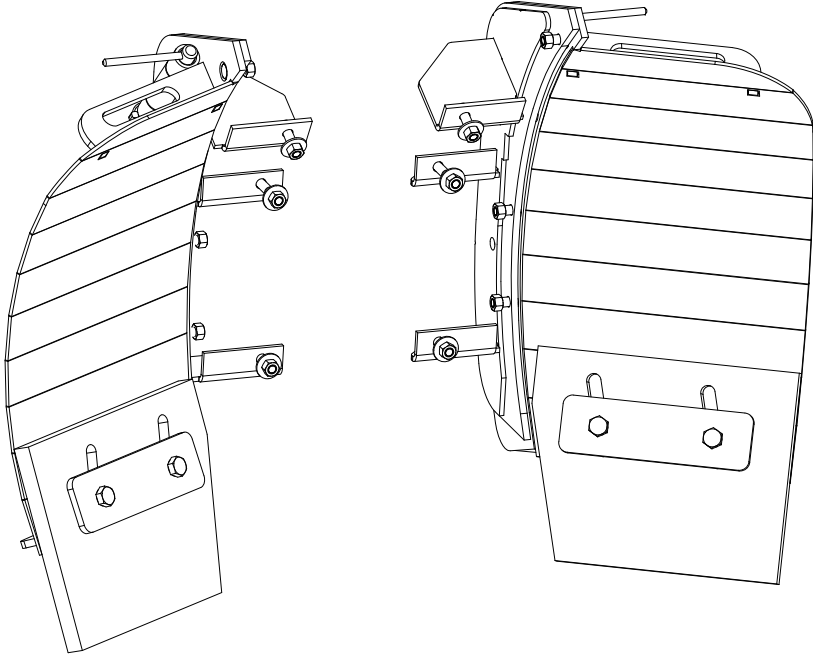


Retro Snow Blade Pin-On Wings



Model Number WGS-R.

Phone: 320-393-7080

08/12/15

WGS-R

Features of Virnig Mfg. Inc. Retro Snow Blade Pin-On Wings:

- After initial mounting of brackets, wings can be removed by use of 4 pins.
- Adjustable, replaceable Urethane wear edges.

Installation



- WGS-R are design to be installed on plows WITHOUT mount holes on ends of moldboard, as shown above. If plow has mount holes on the ends of the moldboard, Virnig Mfg. Inc. part number WGS would provide for an easier installation.
- Can install Bolt Plate Weldments (brackets) by drilling holes and bolting or by welding.

Snow Blade Wings Edge Kit (WGSEK)

Items 2, 3, 9 and 10 are available as a replacement edge kit. Replacement edge kit includes two Urethane wear edges, two retainers and required mounting hardware.

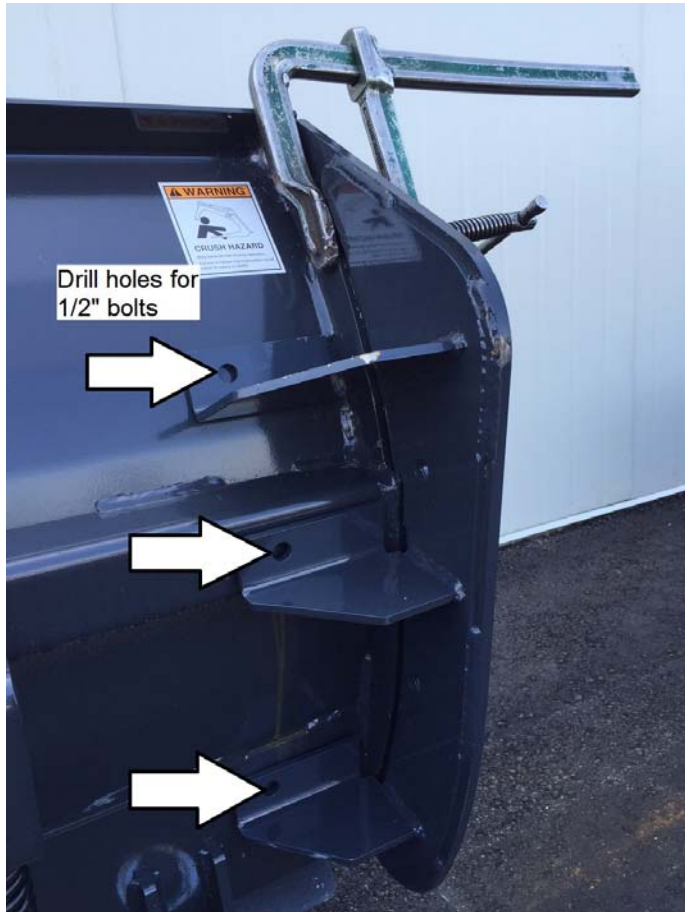
Snow Blade Wings Edge Kit part number: WGSEK



- Locate and securely clamp Bolt Plate Weldment (bracket) as shown above (several clamps may be needed).
- Bolt Plate Weldments (brackets) are made to closely fit onto moldboard. Small amount of grinding may be needed for optimum fit (near welds, near any damaged portions of moldboard, etc.).

Retro Snow Blade Wings (WGS-R) Parts List

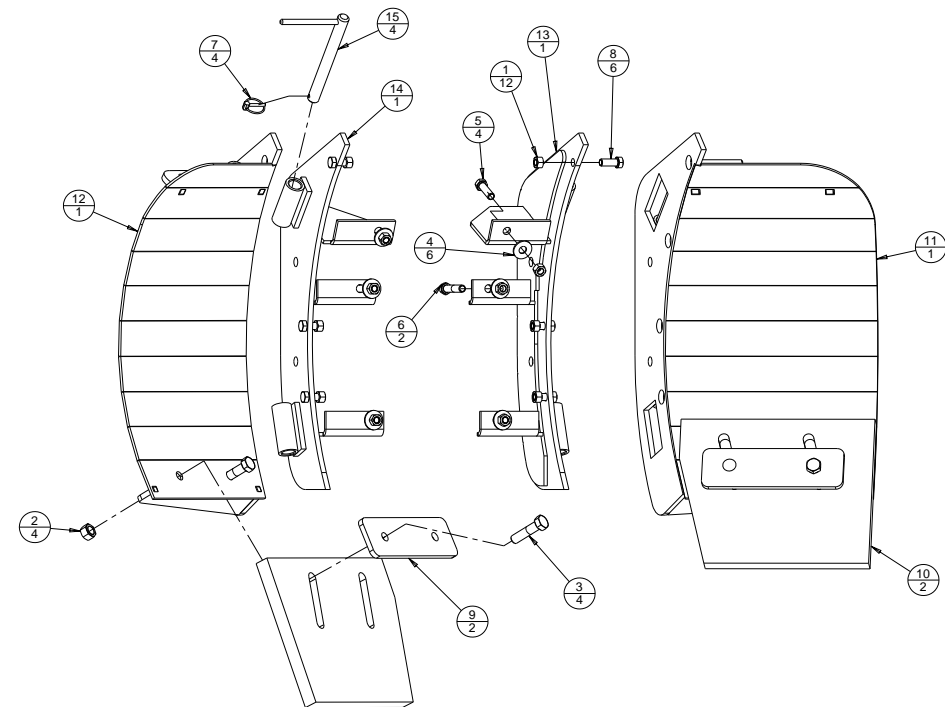
Bolt On Instructions



- In locations shown, drill holes for 1/2" bolts through moldboard.

ITEM	PART NO.	QTY	DESCRIPTION
1	1003PP	12	1/2"-13 REVERSE LOCK NUT
2	1008PP	4	5/8"-11 TOP LOCK NUT
3	5130PP	4	5/8"-11 X 2 1/2" LG HHCS
4	5148PP	6	1/2" USS FLAT WASHER
5	5225PP	4	1/2"-13 X 1 3/4" LG HHCS
6	6291PP	2	1/2"-13 X 2 3/4" LG HHCS
7	6723PP	4	3/16" X 1" LG LYNCH PIN
8	7487PP	6	1/2"-13 X 1 1/4" LG HHCS
9	9248VP	2	RUBBER EDGE RETAINER SHORT
10	9957PP	2	SNOW WING URETHANE WEAR EDGE
11	9961VW	1	WGS WING WELDMENT LH
12	9962VW	1	WGS WING WELDMENT RH
13	9965VW	1	RETRO WING BOLT PLATE WELDMENT LH
14	9966VW	1	RETRO WING BOLT PLATE WELDMENT RH
15	9967VW	4	WING PIN WELDMENT

Main Component Assembly



Wing Installation Instructions

- Install wings by positioning the mount pipes of each wing aligned with the mount pipes on the Wing Bolt Plate Weldments. Secure each wing with two Wing Pin Weldments (#15) and two lynch pins (#7).
- Two additional holes are located in each Wing Bolt Plate Weldment and wing for installation of 5/8" bolts (not included). If wings are not going to be removed for long periods of time, the additional bolts can be used to attach wings to plow more securely, if desired.

Operation

- Urethane Wear Edges (Item #10) can be adjusted by loosening 5/8" bolts (Item #3) and nuts (Item #2). For best Urethane Wear Edge adjustment, install plow onto loader, loosen 5/8" bolts and nuts, drive loader onto a flat floor/surface, lower loader boom to stops and use loader tilt function to position plow flat on the floor/surface. Adjust Urethane edges to contact floor/surface. Tighten 5/8" hardware. Can repeat this process as needed, especially after flipping main edge of plow.
- Wings can be removed from plow by removing lynch pins and Wing Pin Weldments. Wing Bolt Plate Weldments can stay attached on plow.



- In locations shown, drill holes for 1/2" bolts through moldboard endplate.
- Repeat process for opposite end of moldboard.
- Install with bolts/hardware provided as noted in Main Component Assembly.

Weld On Instructions



- Weld at locations shown. Weld locations are a visual guide for weld locations and minimum weld amount. Can add additional weld(s) as desired.



- Weld at locations shown. Weld locations are a visual guide for weld locations and minimum weld amount. Can add additional weld(s) as desired.
- Repeat process for opposite end of moldboard.
- Following bolts/hardware are not used with weld on installation; Items 1, 4, 5, 6 and 8.