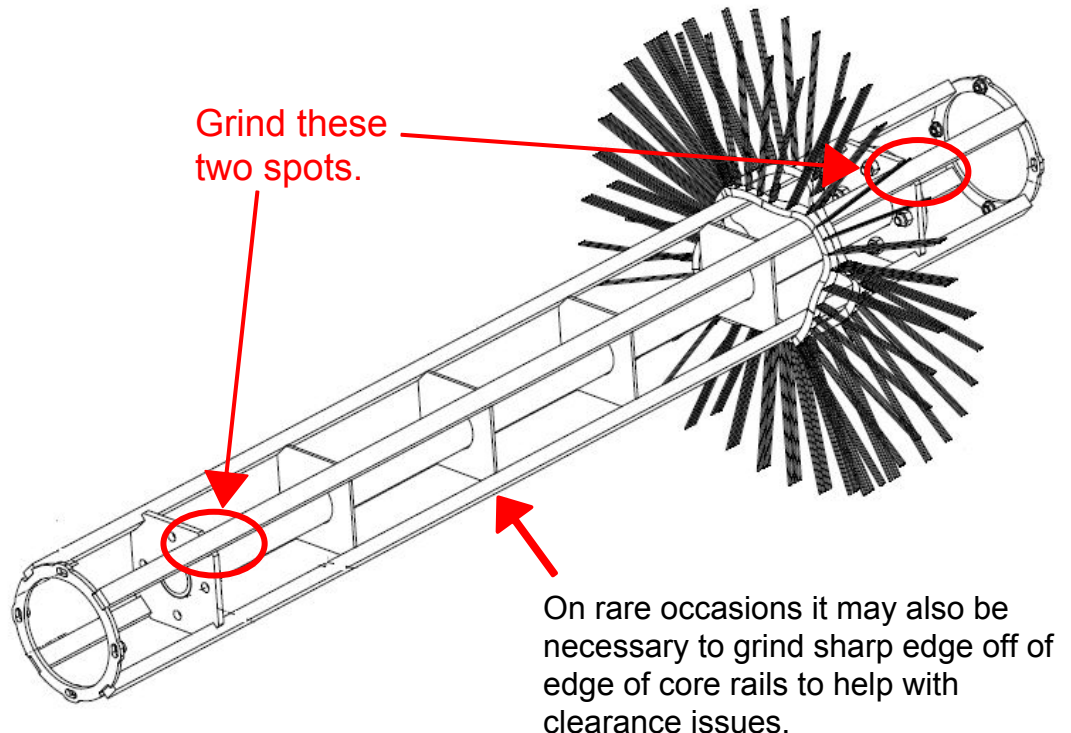
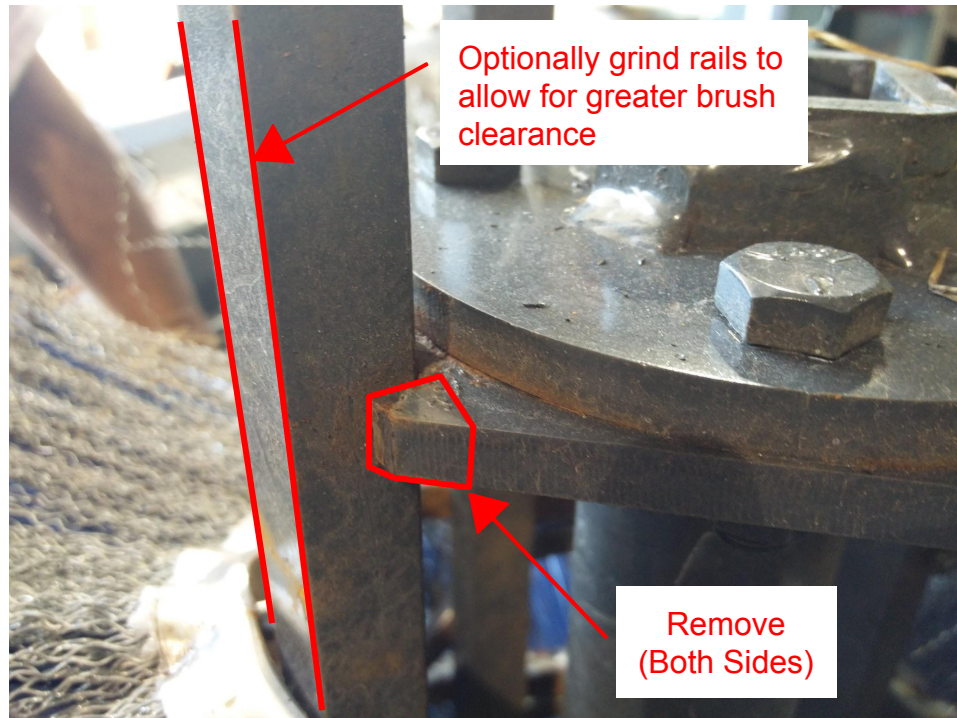


Brush Replacement Virnig Pick-Up Sweepers

July 7, 2016

Due to a recent change in Sweepster 26" replacement brushes the clearances with Virnig Pick Up Broom (PUB) cores may be too tight for the brushes to fit. If installing new Sweepster brushes on a Virnig core it may be necessary to grind a small amount off of the two core mounting rings to allow the brush pins to pass by.



Affected brush part #'s

- 01-5210
- 01-0848
- 01-5010

Affected sweepers

- PUB60
- PUB72
- PUB84