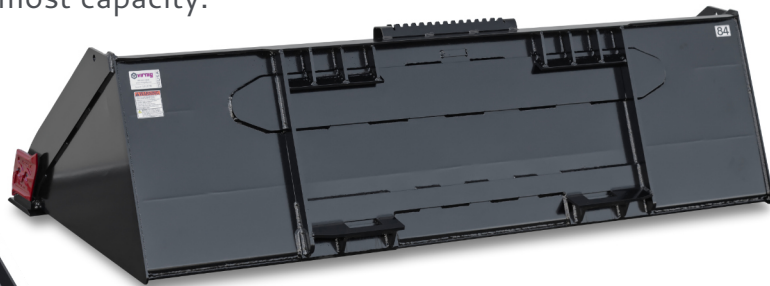


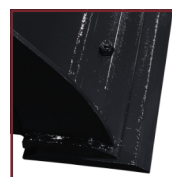
V60 HIGH CAPACITY DIRT BUCKET

Available widths 72", 78", 84" & 90"

The toughest and heaviest dirt bucket with the most capacity.



ADDITIONAL EDGE OPTIONS See page 81



STANDARD
BOLT-ON



SERRATED
BOLT-ON



WELD-ON
TEETH

Bucket shown with optional side cutters and optional bolt-on edge.

40.0"
DEPTH

24.1"
HEIGHT

UP TO
24CU FT
STRUCK CAPACITY
(VARIES BY MODEL)

UP TO
29CU FT
HEAPED CAPACITY
(VARIES BY MODEL)

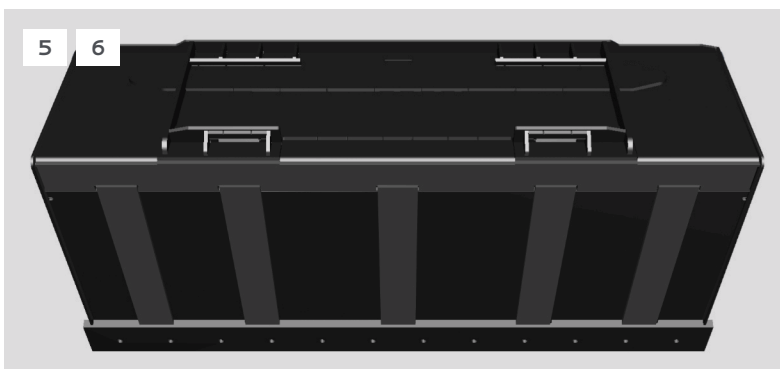
GREATER THAN
2400 LB
LOADER OPERATING CAPACITY

1. CUTTING EDGE VISIBLE FROM INSIDE CAB
2. GRADING BEND FOR OPTIMAL REVERSE GRADING & CURVED INSIDE FOR EASIER MATERIAL CLEANOUT
3. 1" x 6" WELD-ON EDGE
4. ADDITIONAL GUSSETING ON BACK OF BUCKET
5. 1/2" x 4" WEAR BARS PROTECT THE BUCKET BOTTOM
6. ADDITIONAL WEAR BAR ACROSS ENTIRE BUCKET HEEL FOR LONGEVITY
7. 1/4" THICK SHELL & SIDE PLATES



OPTION: SIDE CUTTERS

Exclusive reversible design. Improves performance in hard, compacted soils and extends the life of the bucket sides. Not compatible with Toothbars.



MODEL	HCDB72	HCDB78	HCDB84	HCDB90
Width: Overall / Inside (Inches)	73.5 / 71.3	79.5 / 77.3	85.5 / 83.3	91.5 / 89.3
Overall Height (Inches)	24.1			
Depth: Overall / Inside (Inches)	40.0 / 35.4			
Capacity: Struck / Heaped (Cubic Feet)	19.5 / 23.4	21.1 / 25.3	22.7 / 27.2	24.3 / 29.2
Bucket Back Angle (Degrees)	66			
Shell Thickness (Inches)	0.25			
Side Plate Thickness (Inches)	0.25			
Structural Wear Bars Under Bucket (1/2" x 4")	5			
Approximate Weight (Pounds)	805	850	890	935
Recommended Loader Capacity	Greater than 2400 pounds			