

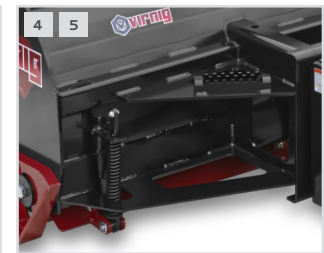
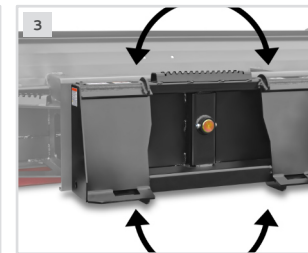
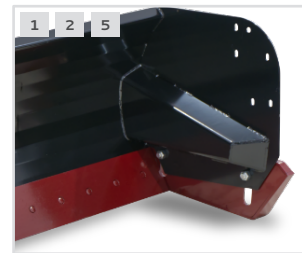
# V60 STEEL EDGE SNOW PUSHER

Available widths 84", 96", 108" & 120"

Snow pusher with hardened steel trip-edge and curved moldboard ideal for scraping hard-pack.



SHOWN WITH OPTIONAL PULL BACK



1. DESIGNED TO AUTOMATICALLY KEEP PUSHER WEIGHT ON EDGE FOR CONSISTENT CLEAN-UP & LESS MAINTENANCE

3. 4° SIDE-TO-SIDE OSCILLATION FOLLOWS UNEVEN SURFACES

2. REVERSIBLE, SELF-LEVELING AR400 SKID SHOES WITH TAPERED OUTSIDE EDGE TO PROTECT FROM SIDE IMPACTS

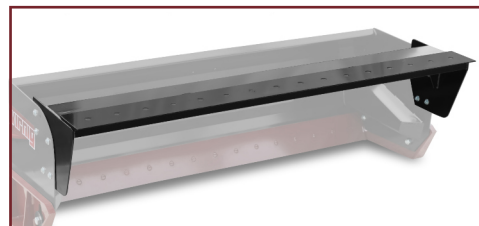
4. TRIP EDGE PROTECTS OPERATOR & EQUIPMENT

5. HD FRAME BRACING WITH BEVELED INSIDE GUSSETS INCREASES SIDE PLATE STRENGTH

**31.7"**  
PUSHER HEIGHT

**1210-1380 LB**  
OVERALL WEIGHT  
(VARIES BY MODEL)

GREATER THAN  
**1500 LB**  
LOADER OPERATING CAPACITY



**OPTION: STEEL EDGE PULL BACK**  
Enables precise snow cleanup along buildings, vehicles, etc. 5/8" x 8" reversible, replaceable steel edge allows 5 1/2" of total wear.

MODEL	SESP84	SESP96	SESP108	SESP120
Width: Overall / Inside (in.)	92.5 / 86.5	104.5 / 98.5	116.5 / 110.5	125.4 / 119.4
Overall Height (in.)	31.7			
Depth: Overall / Inside (in.)	54.4 / 32.2			
Pusher Oscillation (degrees)	(+/-) 4			
Moldboard Thickness (in.)	0.19			
Cutting Edge (in.)	5/8" x 8" Steel			
Approximate Weight (lbs)	1210	1275	1340	1380
Recommended Loader Capacity	Greater than 1500 lbs			

**STEEL EDGE PULL BACK SPECS:**

MODEL	SEP84	SEP96	SEP108	SEP120
Overall Pull Back Width (in.)	86.0	98.0	109.9	119.0
Inside Pull Back Width (in.)	85.4	97.4	109.4	118.3
Cutting Edge (in.)	5/8 x 8 Steel			
Approximate Weight (lbs)	265	295	325	350