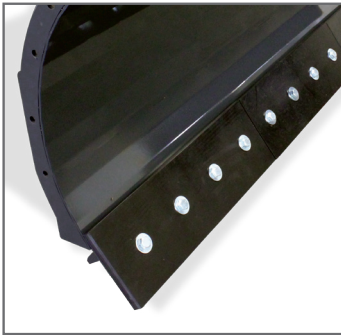


V50 ANGLE SNOW BLADE



- One-cylinder hydraulic design allows the blade to angle +/- 30°.
- Trip edge containing two compression springs and three hinge points.
- Side-to-side oscillation allows the cutting edge to follow the contour of the surface.
- 2" bore, 8 3/8" stroke cylinder featuring a corrosion, dent and flake resistant NitroSteel® cylinder rod.
- Greasable 1 1/4" cylinder pins and 1 9/16" diameter pivot pin.
- Design allows 5 1/2" of total wear on the standard 5/8" x 8" reversible, replaceable bolt-on wear edge.

Option: Poly Edge

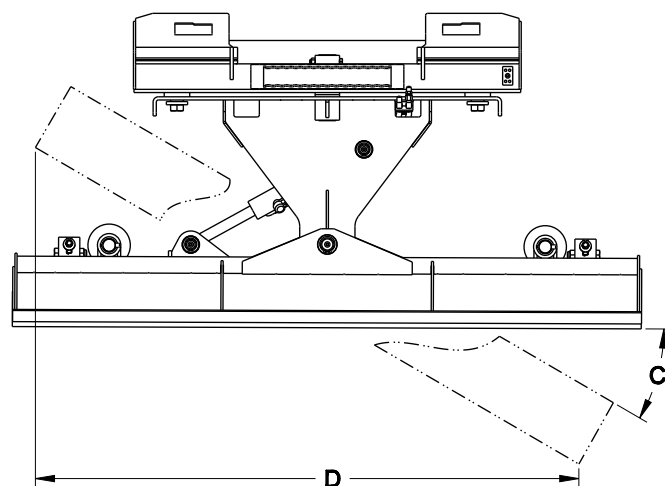
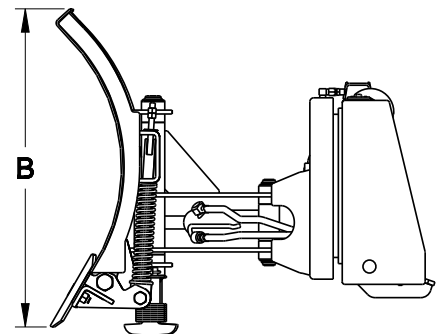
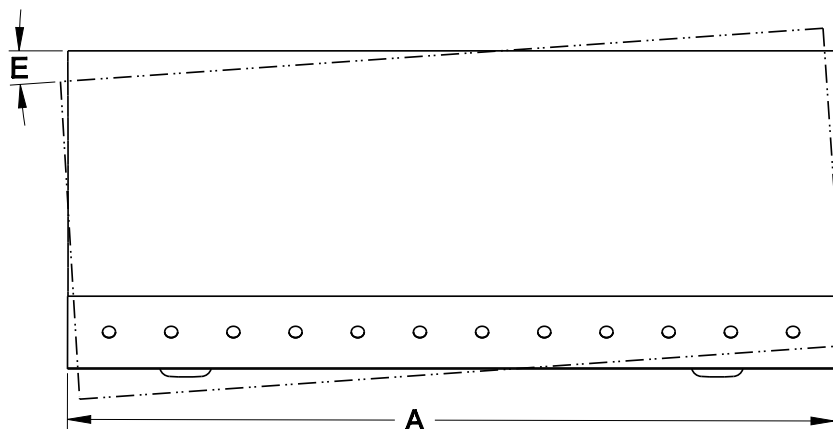


Details on page 3.



A lighter version of the V60 Angle Snow Blade for less intensive snow removal jobs.

V50 ANGLE SNOW BLADE SPECS



MODEL	SBS60-LD	SBS72-LD	SBS84-LD	SBS96-LD
(A) Overall Blade Width (Inches)	62.0	74.0	86.0	98.0
(B) Blade Height (Inches)	29.0			
(C) Blade Angle (Degrees)	+/- 30			
(D) Width at Full Angle (Inches)	54.0	64.0	74.0	84.0
Moldboard Thickness (Inches)	0.19			
Cutting Edge (Inches)	5/8 x 8 Bolt-on			
(E) Blade Oscillation (Degrees)	+/- 4			
Approximate Weight (Pounds)	800	850	900	950
Recommended Loader Capacity	Less than 1800 pounds			

- 1-9/16" diameter pivot pin.
- 2" bore, 8-3/8" stroke cylinders with 1-1/4" NitroSteel® cylinder rods and 1-1/4" cylinder pins.
- Includes steel cutting edge, cylinder, fittings, hoses from blade to loader and couplers.
- Replacement edge kits available.