

MINI SKID STEER

V20 MINI SKID ROTATING LOG GRAPPLE

Grapple jaw rotates and hangs freely for grabbing and placing logs, brush, and rocks.

CHOOSE FROM THREE MINI SKID MOUNTS:

- MINI UNIVERSAL (All brands except Bobcat® and ASV®)
- BOBCAT® Mini
- ASV® Mini

NOTE: None of the above are compatible with universal skid steer mount.



3/8"
AR400
STEEL JAWS

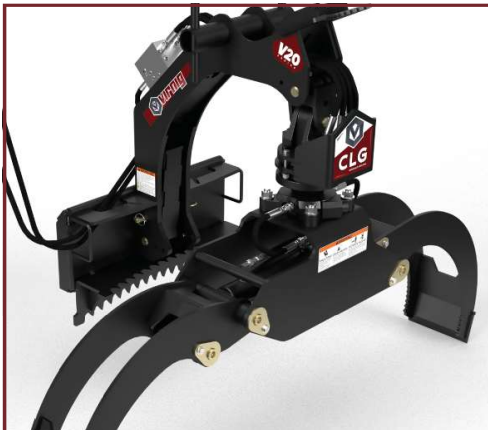
60"
JAW OPENING

270°
MANUAL
ROTATION

360°
HYDRAULIC
ROTATION AVAILABLE

300 LB
OVERALL WEIGHT
W/ MINI UNIVERSAL MOUNT

LESS THAN
1650 LB
LOADER OPERATING
CAPACITY



**OPTION:
360° HYDRAULIC ROTATION**
Full rotation control for grabbing objects from any angle and allows precise placement where needed.

HD 3-ton rotator provides a dynamic load rating of 3,375 pounds – 3x higher than industry standard.



MINI SKID STEER



- 1. JAWS FEATURE 60" OPENING & BYPASS EACH OTHER FOR GRABBING SMALLER LOGS
- 2. AR400 STEEL JAW TINES W/ SERRATED TIPS TO PROVIDE A BETTER GRIP
- 3. HOLDING VALVE PREVENTS JAWS FROM DRIFTING OPEN DURING OPERATION
- 4. STANDARD PUSH BAR, ROPE TIE-OFF POINTS & TRAILER RECEIVER HITCH

- 5. SERRATED CRADLE SECURES LOGS IN VERTICAL & HORIZONTAL POSITIONS
- 6. 270° MANUAL ROTATION. 360° HYDRAULIC ROTATION AVAILABLE
- 7. OPTIMIZED HOSE ROUTING & RECESSED GREASE ZERKS SAFEGUARDED FROM POTENTIAL DAMAGE

MODEL	CLG
Overall Width, Jaw Closed (in.)	29.4
Overall Height: Manual / Hydraulic Rotate (in.)	37.4 / 41.8
Overall Depth (in.)	31.1
Jaw Tine Thickness (in.)	.375 ¹
Cylinder Bore / Stroke (in.)	2.0 / 8.375
Cylinder Pins / Hinge Pins Diameter (in.)	1.25 / 1.0
Grapple Jaw Opening (in.)	60.0
Grapple Jaw Minimum Closing Diameter (in.)	7.0
Hydraulic Rotator Capacity: Static / Dynamic (lbs)	6750 / 3375
Approximate Weight: Manual / Hydraulic Rotate (lbs)	300 ² / 350 ²
Recommended Loader Capacity	Less than 1650 lbs

¹Material is AR400 Plate (150,000 PSI Minimum Yield Strength).
²Bobcat mount adds approximately 40 lbs to model weight, and ASV mount adds 45 lbs.