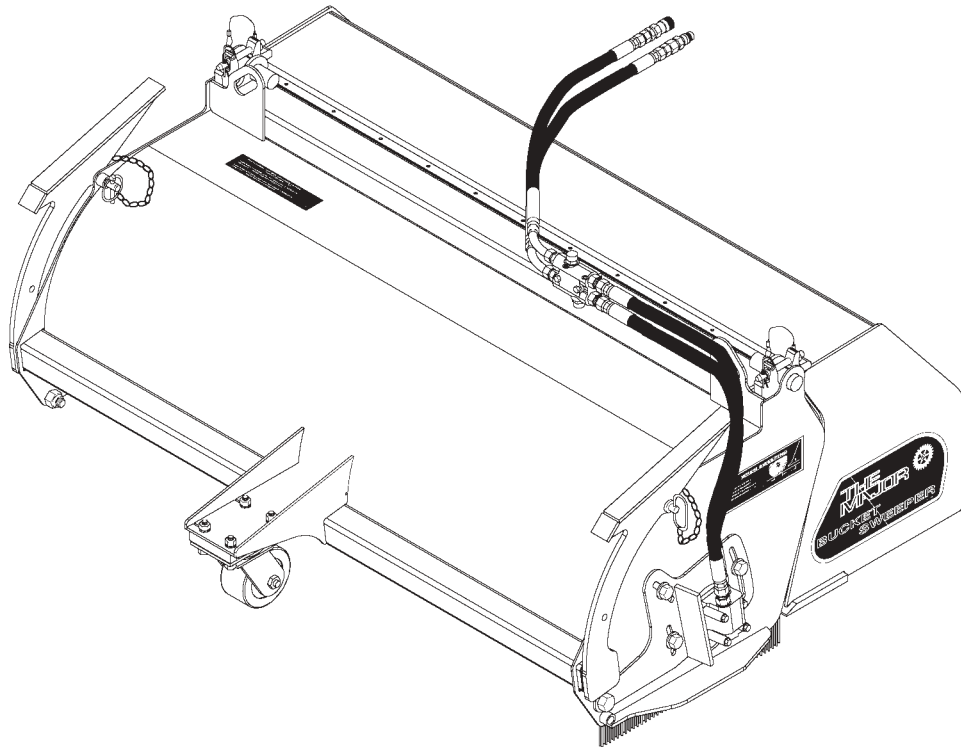


OM628

# THE MAJOR<sup>®</sup>

## BUCKET SWEEPER

### OPERATORS & PARTS MANUAL 2852 & 3174 SERIES



- MODEL 12002 - 5 FOOT WIDE X 24 INCH DIAMETER (SKID-STEER)
- MODEL 12004 - 6 FOOT WIDE X 24 INCH DIAMETER (SKID-STEER)
- MODEL 12017 - 6 FOOT WIDE X 24 INCH DIAMETER (TRACTOR)
- MODEL 12006 - 7 FOOT WIDE X 24 INCH DIAMETER (TRACTOR)
- MODEL 12008 - 8 FOOT WIDE X 24 INCH DIAMETER (TRACTOR)

**PART #75528**

The Major<sup>®</sup>  
503 Gay Street • P.O. Box 266  
Delhi, Iowa 52223 USA  
Phone: 563 922 2981 • Fax 563 922 2700  
A Division of Attachment Technologies, Inc.

January 30, 2003

M-533  
1-30-03-2



---

# TABLE OF CONTENTS



Introduction ..... 2

Safety Information ..... 3

Set-Up and Installation ..... 6

Operation ..... 9

Maintenance ..... 13

Specifications ..... 18

Parts Lists ..... 19

## INTRODUCTION

Thank you for purchasing this quality product from The Major®. The Major provides quality sweepers and attachment products through innovative design, quality manufacturing, and timely service.

---

# INTRODUCTION

---

**The MAJOR®**

The Major bucket sweeper provides clean sweeping ability without losing the versatility of bucket operation. A simple disconnection of the sweeper allows the bucket sweeper to operate on your machine without having to wrestle with stiff pivot pins. The balanced, integrated bucket sweeper allows both operations to be performed with a single, simple hydraulic connection, eliminating the need for expensive, optional hydraulics.


The closed design keeps dust and swept material contained more efficiently when sweeping. The sweeper just swings out of the way when the bucket is full, allowing the operator to dump the load without leaving the seat.

## GENERAL INFORMATION

The purpose of this manual is to provide safe operating and maintenance procedures for the intended use of the broom. It is important that all information in this manual is READ and UNDERSTOOD before operating the broom

Since the manufacturer has no direct control over machine application and operation, it is the responsibility of the operator to conform to good safety practices in the implementation of this machine.

This section is composed of various warnings and safety tips which must be followed. Also read the owner's manual which came with the skid steer or prime mover which the broom is attached to.

The safety alert symbol  is used throughout this manual to bring attention to items which must be followed for your safety and the safety of those around you. There are two general types of safety guidelines in this manual:



**DANGER:** Indicates a potentially hazardous situation which, if not avoided, could result in death or serious injury.



**CAUTION:** Indicates a potentially hazardous situation which, if not avoided, could result in minor or moderate injury. It may also indicate unsafe practices which could result in serious damage to the machinery.

Notes are also found in this manual.

**NOTE:** Provides information which may be of special interest.

## TO THE OPERATOR

The primary responsibility for safety with the equipment falls to the operator. It is the skill, care, common sense and good judgement of the operator that will determine how efficiently and safely the job is performed. Know the equipment before you start. Know the capabilities, dimensions, and how to operate all the controls. Visually inspect the equipment before you start and never operate equipment that is not in proper working order with all safety devices in place and operating.

## BEFORE YOU START

Wear the right clothing and gear for the job. Protective equipment such as hard hat, steel-toed shoes, leather gloves, respirator or safety glasses may be in order. They can protect you from needless injury. Be sure to meet the requirements for the specific job site.

Do not wear loose clothing or things such as rings and watches around the equipment. They could get caught in moving parts and lead to serious injury or death.

Know your equipment. Know how to operate all controls and know emergency shut down procedures. Make sure all safety devices are in place.

Inspect the equipment. Check for missing shields, loose bolts, twisted or damaged hydraulic hoses. Be sure all operational decals are in place and legible. Never operate a damaged or unsafe machine. Remember, you are responsible for your safety and the safety of those around you.

Keep all step plates, grab bars, pedals and controls free of dirt, grease, oil and water. Keep clear of tools, rags and extra parts. Keep equipment clean to help avoid injury from a fall when getting on or off equipment.

## OPERATING PRECAUTIONS

Know your work area before you begin. Observe any potential hazard areas such as soft ground, drop-offs, rocks and other obstacles.

Know where all utility lines are. Observe overhead electrical and phone lines. Be sure equipment will safely clear them.

Be alert to others in the work area. Be sure others know when and where you will be working. Make sure no one is underneath or behind equipment.

Never try to board equipment while its moving.

Do not stand in front of the equipment when it is operating.

Always use the seat belt and safety ROPS that are on the equipment.

Never allow riders or passengers on the equipment unless the equipment is designed for passengers.

Test all controls before starting operation. This includes safety equipment and devices.

Be aware of what is going on around you. Watch for others who may not be watching out for themselves.

## MAINTENANCE PRECAUTIONS

Replace all safety shields and guards when finished performing maintenance. Do not operate the broom with protective equipment removed.

Never perform maintenance or adjustments while the broom is operating. Turn off the engine when performing maintenance to prevent accidental movement.

Make sure all operating and residual pressures are relieved before working on a hydraulic system. Shut engine off and operate all the controls to relieve any pressure.

Use only manufacturer recommended replacement parts. Other parts may be substandard in fit and quality.

Do not set relief valve pressures higher than recommended by the manufacturer. Relief valves should be checked and adjusted only by a trained service technician. Do not remove or block a relief valve.

Observe proper maintenance schedules. Proper maintenance can help prevent a hazardous condition.

Always wear safety goggles or glasses when working on equipment.

Never use your hands to search for hydraulic fluid leaks. Use cardboard or paper to indicate the presence of a leak. High pressure hydraulic fluid leaks can be invisible and may cause an infection or toxic reaction if skin is penetrated. Seek medical attention immediately if hydraulic fluid is injected into skin.

Always clean the ends of the hydraulic lines before attaching them to the prime mover. This reduces the amount of contamination in hydraulic components. Cover and protect the ends when the broom is disconnected and not being used.

## ATTACHING THE UNIT

The bucket sweeper comes in four different widths. The weight and capacity of the skid steer or prime mover determines which model broom can be attached.



**DANGER: Never mount a broom to a skid steer or prime mover which is not capable of handling the weight of the broom.**

	12002	12004	12017	12006	12008
Recommended Prime Mover	Skid Steer w/1300 lb Lift Capacity	Skid Steer w/1700 lb Lift Capacity	Compact Backhoe	Standard Backhoe	Heavy Backhoe
Overall Width	60 in. (1.52 m)	72 in. (1.83 m)	72 in. (1.83 m)	84 in. (2.13 m)	96 in. (2.44 m)
Weight	850 lb. (386 kg)	1000 lb. (454 kg)	1100 lb. (499 kg)	1200 lb. (544 kg)	1500 lb. (680 kg)



**CAUTION: Lift capacities are minimum recommended. If denser (heavy) materials are handled, additional capacity may be required.**

The bucket sweeper may be installed on a variety of equipment. When installed on a skid loader, the bucket sweeper comes with a universal adapter plate capable of attaching the bucket sweeper to most common skid loaders. Refer to the skid steer loader operator's manual for proper mounting and safe operation of attachments.

For installation on other types of prime movers, such as tractor loaders or wheel loaders, the sweeper must be ordered with the correct adapter arms for the specific prime mover. The bucket sweeper will replace the standard bucket using the original equipment attachment pins.



---

# SETUP AND INSTALLATION **The MAJOR®**

---

When attaching the bucket sweeper, be sure the bucket is securely locked to the loader arms.



**DANGER: Never walk under a raised broom.**



**DANGER: Never operate an implement which is not securely attached to the skid loader or prime mover.**

In addition to the standard loader and bucket cylinders, the prime mover is required to have a set of auxiliary hydraulic couplers capable of 8-20 gpm (30-83 L/min). The hydraulic pressure must be capable of 2000-3250 psi (140-225 bar). Verify that the prime mover is capable of hydraulic motor operation at these levels.

**NOTE: Some prime movers may meet the listed hydraulic requirements when actuating a cylinder but are not capable of the sustained levels required for motor operation. Overheating of the hydraulic oil may occur in these situations.**

If not equipped, install quick couplers on the prime mover within reach of the hoses from the sweeper.

Attach the hydraulic quick couplers to the auxiliary hydraulics of the prime mover. Connect the male quick coupler (port VA) to the pressure side of the prime mover.

Many different types and sizes of quick couplers are used on the various brands of prime movers. The sweeper is equipped with a standard 3/8" quick couplers, which may not fit directly to the couplers included with the prime mover. Refer to the skid steer loader or prime mover's operators manual for hydraulic quick coupler requirements.

## REMOVING THE BUCKET SWEEPER

When removing the bucket sweeper from the skid steer loader or prime mover:

1. Separate the hydraulic quick couplers in the sweeper motor hydraulic lines.
2. With the bucket sweeper raised slightly, remove the locking pin from each parking stand stored on the side of the sweeper and pull the parking stands from the frame tube.
3. Reinsert the parking stands into the tube on the opposite side of its storage position. Secure with locking pins.

**NOTE: The storage location of each parking stand is the opposite the working position.**



**CAUTION: Do not apply down force to the sweeper when the parking stands are in the support position.**

4. Lower the bucket sweeper onto the parking stands.
5. For skid steer loaders, release the adapter plates' quick-release mechanism and back away from the sweeper. For other types of prime movers, remove the bucket attachment pins.

**NOTE: Use lifting eyes located on each end of the broom to move the unit if not attached to a skid steer or prime mover.**

## SWEEPING

To operate the bucket sweeper, lower the sweeper so the dolly wheel is firmly on the ground. Lower the bucket so the bristles are against the ground for a distance of about 4 in. (102 mm). The unit should be reasonably level with the bucket slightly off the ground to prevent scraping. Do not exert excess pressure on the bristles or the dolly wheel. Place the loader in the float position, if equipped.



**CAUTION: Keep the bucket and broom assembly level to aid in collection and to prevent the bucket from digging.**

Once the broom position is set, actuate the auxiliary hydraulics. The broom will start to rotate and forward travel can begin.

**NOTE: If the broom does not operate, the hydraulics are connected incorrectly.**

Engine speed may be increased to increase broom rotation speed. Travel speed will vary depending upon the material being swept and the terrain.

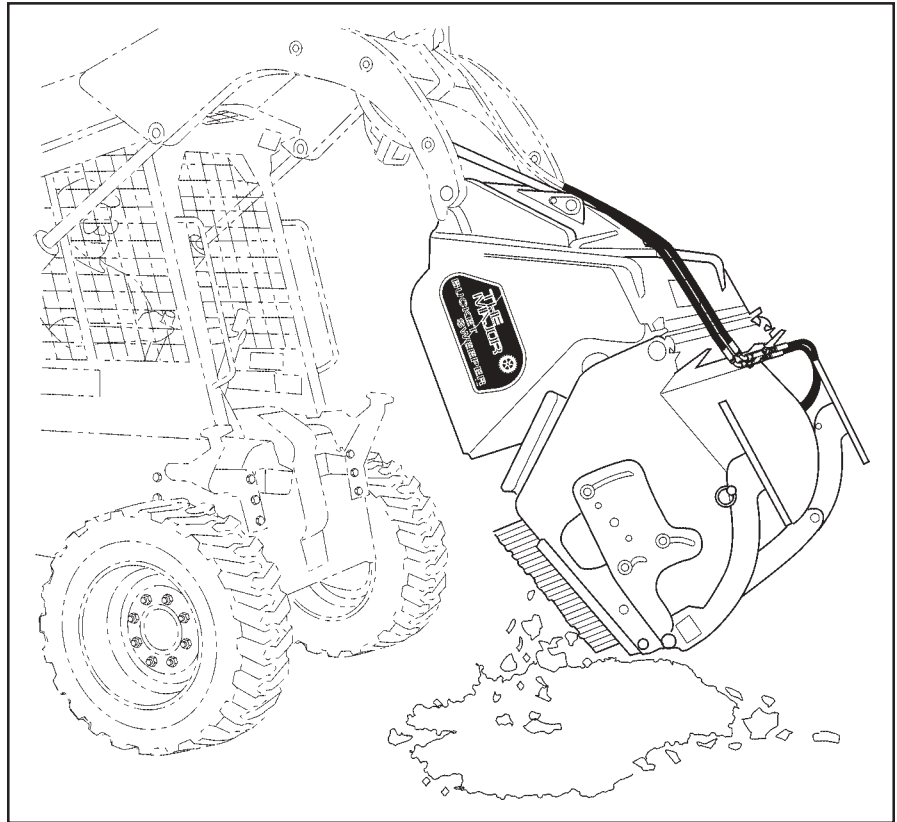
When sweeping close to a wall or curb, do not use the side guards as wear plates. Do not allow the hydraulic motor (located on the left side of the machine) to contact walls or curbs.

## DUMPING

When the bucket becomes full of swept material, it will not collect as well and material will fall out. The broom rotation should be stopped and the broom raised slightly for transport to the stockpile or truck. Tilt the broom rearward slightly to keep the collected material in the bucket better.



**CAUTION: Keep the bucket sweeper as close to the ground as possible when transporting or dumping.**



*Figure 1. Bucket Sweeper Dumping*

Once the dumping location has been reached, raise the bucket approximately 2 ft. (0.6 m) above the dumped pile to allow clearance for the sweeper. As the bucket is tilted forward, the sweeper will swing out of the way to allow the collected material to dump from the bucket.

When the load is empty, tilt the bucket rearward and the sweeper will pivot back into position.

## SWEEPER REMOVAL

To remove the sweeper for bucket use:

1. Separate the hydraulic quick couplers in the sweeper motor hydraulic lines.
2. With the bucket sweeper raised slightly, remove the locking pin from each parking stand stored on the side of the sweeper and pull the parking stands from the frame tube.
3. Reinsert the parking stands into the tube on the opposite side of its storage position. Secure with locking pins.

**NOTE: The storage location of each parking stand is the opposite the support position.**

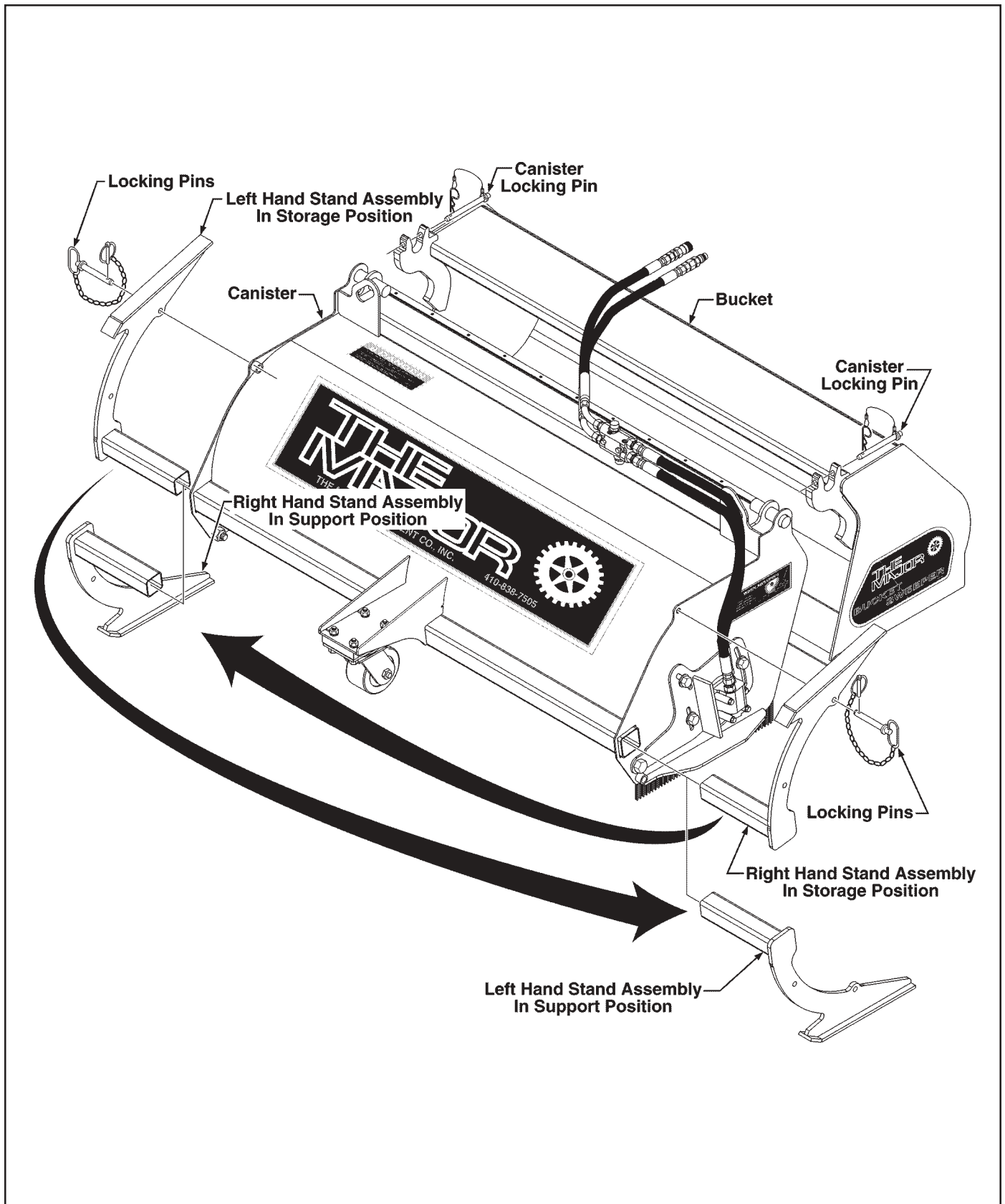


Figure 2. Parking Stand Locations

503 Gay Street • P.O. Box 266 • Delhi, Iowa 52223 USA • Phone: 563.922.2981 • Fax: 563.922.2700



**CAUTION: Do not apply down force to the sweeper when the parking stands are in the support position.**

4. Remove the cannister locking pins securing the bucket to the sweeper.
5. Lower the bucket sweeper onto the parking stands. When the sweeper is supported by the parking stands, tilt the bucket forward and continue to lower the boom.
6. As the bucket clears the support pins on the sweeper back away from the sweeper.

To attach the sweeper to the bucket:

1. Empty the bucket of any material which may have become stuck in the corners. Ensure the pivot pins and seal areas are free of debris.
2. Tilt the bucket fully forward. Position the hooks on the bucket under the pins on the sweeper.
3. Raise the bucket to engage the pins. The sweeper may be raised off the ground slightly.



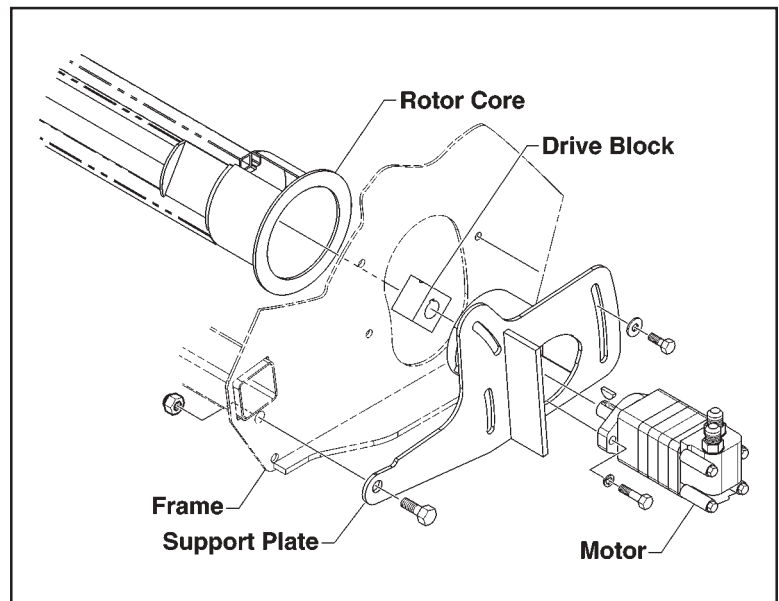
**CAUTION: Do not raise sweeper higher than necessary until pins are properly installed.**

4. Secure the sweeper to the bucket using the cannister locking pins.
5. Remove the pins securing the parking stands in the support position and remove the parking stands. Move the parking stands to the other side of the sweeper and place them into the frame tubes for storage. Secure the parking stands with the pins.
6. Connect the hydraulic lines to the prime mover.

## HYDRAULIC MOTOR

### Removal

1. Lower the sweeper to rest on the ground and support it with the prime mover. This will prevent the broom from dropping when the side support plates are loosened.
2. Tag and disconnect the hydraulic hoses from the hydraulic motor.
3. Remove the three bolts and washers attaching the support plate to the frame.
4. Remove the two bolts and washers securing the motor to the support plate. Remove the motor. The drive block will pull out of the rotor core.
5. Remove the setscrew securing the drive block to the motor shaft and remove the block.



*Figure 3. Right-Side Core and Motor Mount*

### Installation

1. Attach the motor to the support plate using the two bolts and washers previously removed.

**NOTE: Always clean the tips of any hydraulic lines before attaching to prevent contamination of the hydraulic system.**

2. Connect the hydraulic lines to the hydraulic motor as tagged during removal.
3. Slide the support and motor assembly into the end of the frame. Be sure the guide pins of the broom bristles are clear of the motor. Loosely attach the assembly to the frame using the three bolts and washers previously removed.
4. Adjust the height of the broom so the bristles are slightly lower than the dolly wheel.

## BUCKET SEALS

The bucket seals can be replaced if necessary. Side seals are located on each side of the canister. The top seal runs the width of the sweeper. The seals reduce the amount of dust and dirt which can escape from the bucket when sweeping.

1. Separate the sweeper from the bucket. Refer to SWEEPER REMOVAL.
2. Remove the bolts, washers and nuts securing the seal retainer, seal and angle to the cannister.



**CAUTION: Do not allow the baffle plate to drop when the angle is removed.**

3. Install a new seal and secure with the seal retainer, washers, nuts and bolts. Ensure the angle is positioned properly.
4. Remove the bolts, washers and nuts securing the seal retainer and seal along the top of the cannister. Note the orientation of the lip on the seal.
5. Install the new seal and secure with the seal retainer, bolts, washers and nuts. Be sure the lip on the seal is oriented properly.
6. Re-attach the sweeper to the bucket. Refer to SWEEPER REMOVAL.

## BAFFLE

A baffle is located at the base of the bucket to aid in the retention of swept material. If damaged, it can be replaced by separating the sweeper from the bucket. Remove the bolts, washers and nuts securing the bucket side seals, seal retainers, angles and baffle to the bucket. Install the new baffle using new bolts and hardware.

## ROTATING BROOM

The rotating broom will require adjustment as the bristles wear and become shorter. Once the bristles become worn to the point they no longer extend beyond the frame, they should be replaced.



## Adjustment

1. With the sweeper attached to the prime mover, raise the sweeper slightly off the ground.
2. Loosen the three bolts on each side support plate. Lower the broom bristles so there is the equivalent of 3-4 in. (76-102 mm) of contact with the ground.
3. Tighten the bolts on the side support plates to secure the broom into position. Be sure the broom is even on both sides.

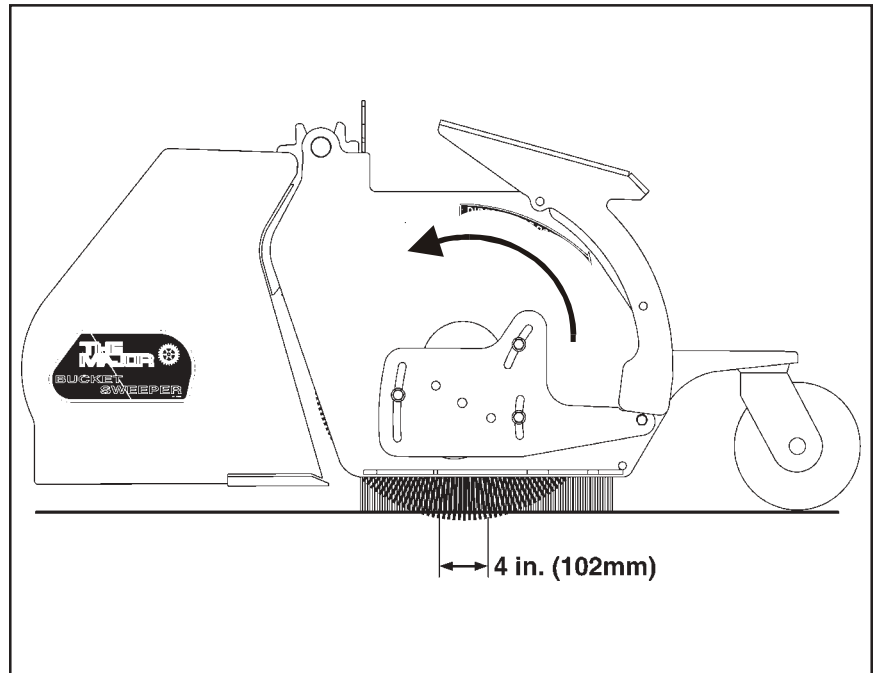
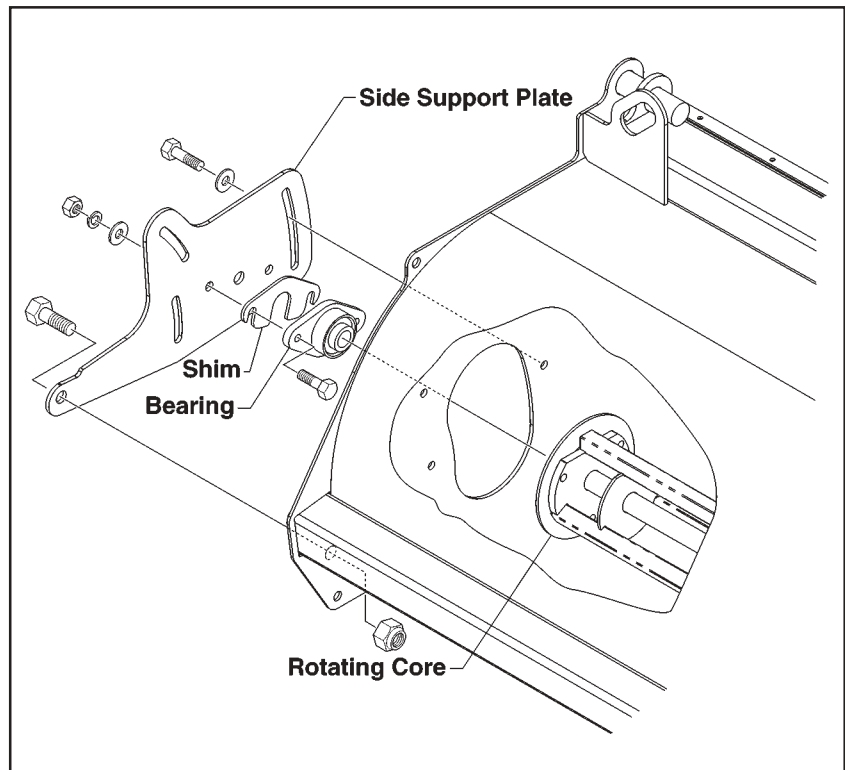


Figure 4. Broom Contact Area

## Replacement

1. Set the broom on the parking stands.
2. Remove the three bolts, lock washers and nuts securing the left side support plate and motor assembly to the frame. Remove the plate and motor assembly and wire tie it to the frame to prevent pulling on the motor hoses.
3. Remove the three bolts, lock washers and nuts securing the right side support plate to the frame. Remove the plate. The shim and bearing will be removed with the plate.
4. Using the prime mover hydraulics, carefully lift the frame assembly. Allow the broom to stay on the ground.
5. Remove the three bolts and lock washers securing the brush retaining plate to the end of the core.
6. Slide the brushes off the end of the core.
7. Install new brushes onto the core, alternating the direction of each brush. Two types of brushes can be installed: a poly bristle or wire bristle. The brushes can also be alternated.

8. Using the prime mover hydraulics, lower the frame assembly over the rotating assembly. Take care not to damage the new bristles.
9. If necessary to replace the right side support bearing, remove the two bolts, washers, lock washers and nuts securing the bearing and shim to the right side support plate. Attach the new bearing and shim(s) to the plate.
10. Loosely attach the right side support plate to the frame.
11. Place the motor and left side support plate in position on the frame. Loosely install the bolts, lock washers and nuts previously removed.



*Figure 5. Left-Side Core Mounting*

12. With the rotating bristles adjusted even with the mustache brushes, tighten the bolts in the right and left side support plates. Be sure the bristles are even side-to-side.

## MUSTACHE BRUSHES

To provide a clean sweep with a minimum amount of dirt and dust escaping from the sweeper, keep the mustache brushes in good condition. When worn or damaged, they should be replaced. The mustache brushes are secured to the frame by retainers.

To replace a brush:

1. Remove the retainer bolts and retainers. Remove the brush.
2. Place a new brush into position and loosely install the retainers using the retainer bolts previously removed.
3. Set the brushes so the two side brushes and the end brush are even around the frame. Tighten the bolts into the retainers to secure the brush in position.
4. Adjust the height of the rotating broom to match that of the mustache brushes.

# SPECIFICATIONS

**The MAJOR<sup>®</sup>**

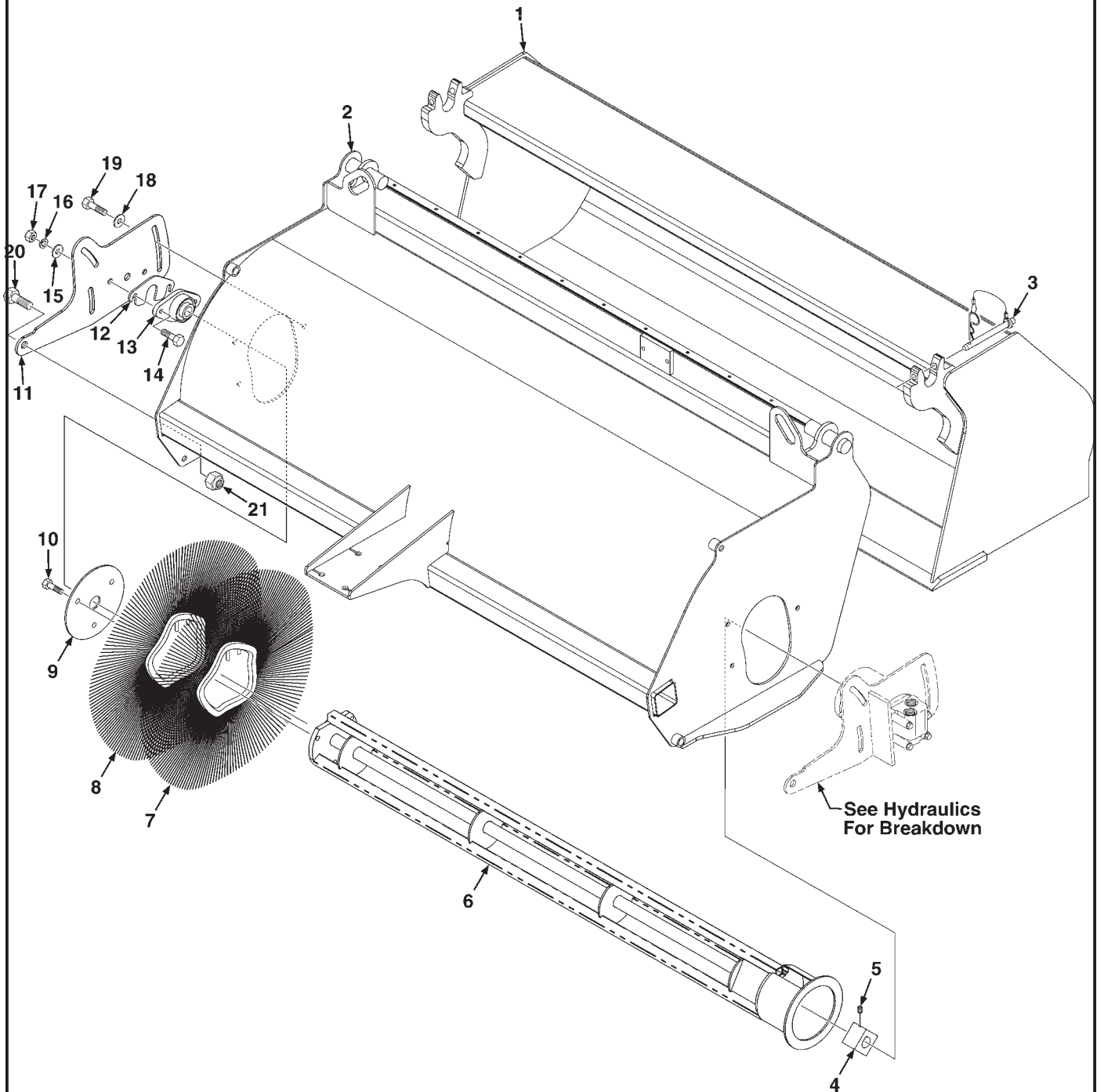
	MODEL				
	12002	12004	12017	12006	12008
Overall Width	60 in. (1524 mm)	72 in. (1829 mm)	72 in. (1829 mm)	84 in. (2134 mm)	96 in. (2438 mm)
Sweeping Width	59 in. (1499 mm)	71 in. (1803 mm)	71 in. (1803 mm)	83 in. (2108 mm)	95 in. (2413 mm)
Height	25 in. (635 mm)				
Length	64 in. (1626 mm)	76 in. (1930 mm)	76 in. (1930 mm)	88 in. (2235 mm)	88 in. (2235 mm)
Weight	850 lb (386 kg)	1000 lb (454 kg)	1100 lb (499 kg)	1200 lb (544 kg)	1500 lb (680 kg)
Drive Method	Direct Drive Hydraulic				
Number of Motors	1				
Effective Displacement	14.9 in <sup>3</sup> (244 cc)				
Hydraulic Flow Range	8-20 gpm (30-75 L/min)				
Hydraulic Pressure Range	2000-3250 psi (138-225 bar)				
Rated Brush Speed	130 rpm @ 10 gpm (38 L/min)				
Bucket Capacity	0.55 yd <sup>3</sup> (0.42 m <sup>3</sup> )	0.66 yd <sup>3</sup> (0.50 m <sup>3</sup> )	0.66 yd <sup>3</sup> (0.50 m <sup>3</sup> )	0.90 yd <sup>3</sup> (0.68 m <sup>3</sup> )	1.04 yd <sup>3</sup> (0.79 m <sup>3</sup> )
Fasteners	Grade 8				
Hydraulic Hose Type	SAE 100R2AT				
Brush Diameter	24 in. (610 mm)				
Brush Head Retention	Internal				
Brush Material	Replaceable polypropylene/steel wire sections				

## TABLE OF CONTENTS

Figure 1. Sweeper Weldment & Brush .....	19
Figure 2. Mustache Brushes .....	21
Figure 3. Bucket Seals .....	23
Figure 4. Dolly Wheel and Stand Assemblies .....	25
Figure 5. Hydraulics .....	27
Figure 6. Decals .....	29

## Figure 1. Sweeper Weldment & Brush

NOTE: Brooms Equipped with Gutter Brush Require Different Weldment. (Serial Number Required when ordering parts.)



## Figure 1. Sweeper Weldment & Brush

ITEM	PART NUMBER	QTY	DESCRIPTION
1*	Contact Factory	1	Bucket Weldment, 5' Long
	Contact Factory	1	Bucket Weldment, 6' Long
	Contact Factory	1	Bucket Weldment, 7' Long
	Contact Factory	1	Bucket Weldment, 8' Long
2	32175	1	Canister Assembly, 24" Dia. x 5' Long (#31295 - Weldment)
	32176	1	Canister Assembly, 24" Dia. x 6' Long (#31296 - Weldment)
	32177	1	Canister Assembly, 24" Dia. x 7' Long (#31297 - Weldment)
	14900	1	Canister Assembly, 24" Dia. x 8' Long (#14480 - Weldment)
3	14894	2	Pin, Tee, 1/2" Dia. x 5" Long
4	11174	1	Block, Drive, 2" Square
5	1999	1	Screw, Set, 1/4"-28UNF x 3/8" Long
6	31268	1	Core, 5' Long
	31266	1	Core, 6' Long
	31277	1	Core, 7' Long
	14490	1	Core, 8' Long
7	12058	15	Brush, Poly, 6-3/8" x 24" Dia., 5' Broom
	12058	18	Brush, Poly, 6-3/8" x 24" Dia., 6' Broom
	12058	21	Brush, Poly, 6-3/8" x 24" Dia., 7' Broom
	12058	24	Brush, Poly, 6-3/8" x 24" Dia., 8' Broom
8	12234	14	Brush, Wire, 6-3/8" x 24" Dia., 5' Broom
	12234	17	Brush, Wire, 6-3/8" x 24" Dia., 6' Broom
	12234	20	Brush, Wire, 6-3/8" x 24" Dia., 7' Broom
	12234	23	Brush, Wire, 6-3/8" x 24" Dia., 8' Broom
9	14826	1	Plate, Retainer
10	1339	3	Bolt, Hex Head, 1/2"-20-UNF x 1-1/4" Long
11	14486	1	Mount, Bearing
12	14858	AR	Shim, Bearing, 1/8" Thick
13	14536	1	Bearing
14	1964	2	Bolt, Hex Head, 1/2"-20UNC x 1-3/4" Long
15	1527	2	Washer, Flat, 1/2"
16	1505	2	Washer, Lock, 1/2"
17	1844	2	Nut, Hex, 1/2"-20UNC - GR8
18	1646	3	Washer, Flat, Hardened, 1/2"
19	10024	3	Bolt, Hex Head, 1/2"-20UNC x 1" Long - GR8
20	10011	1	Bolt, Hex Head, 3/4"-16UNF x 1-1/2" Long
21	1942	1	Nut, Self Locking, 3/4"-16UNF
			AR-As Required PL-Purchase Locally
			* Specify Equipment Type and Model when ordering

Figure 2. Mustache Brushes

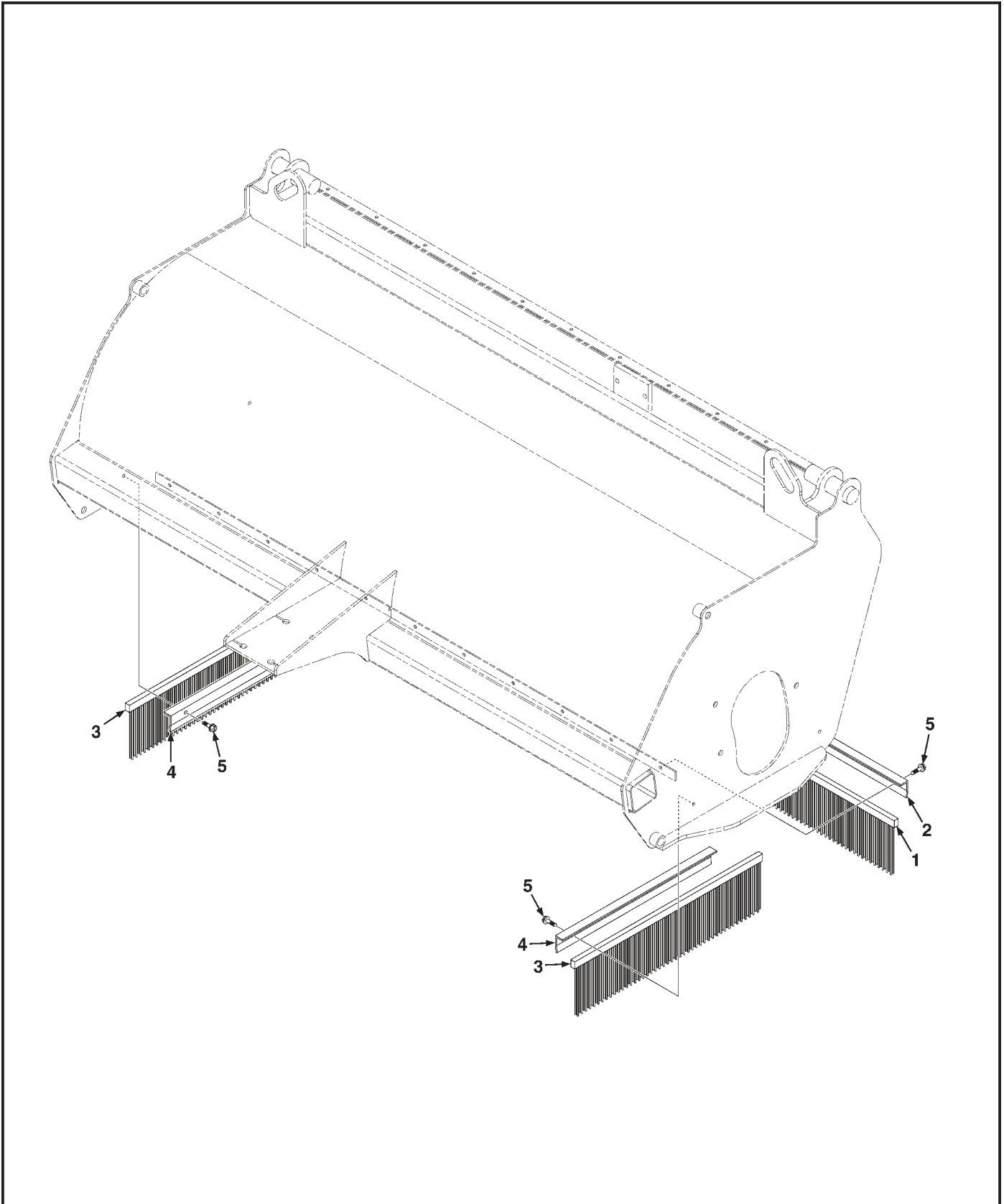
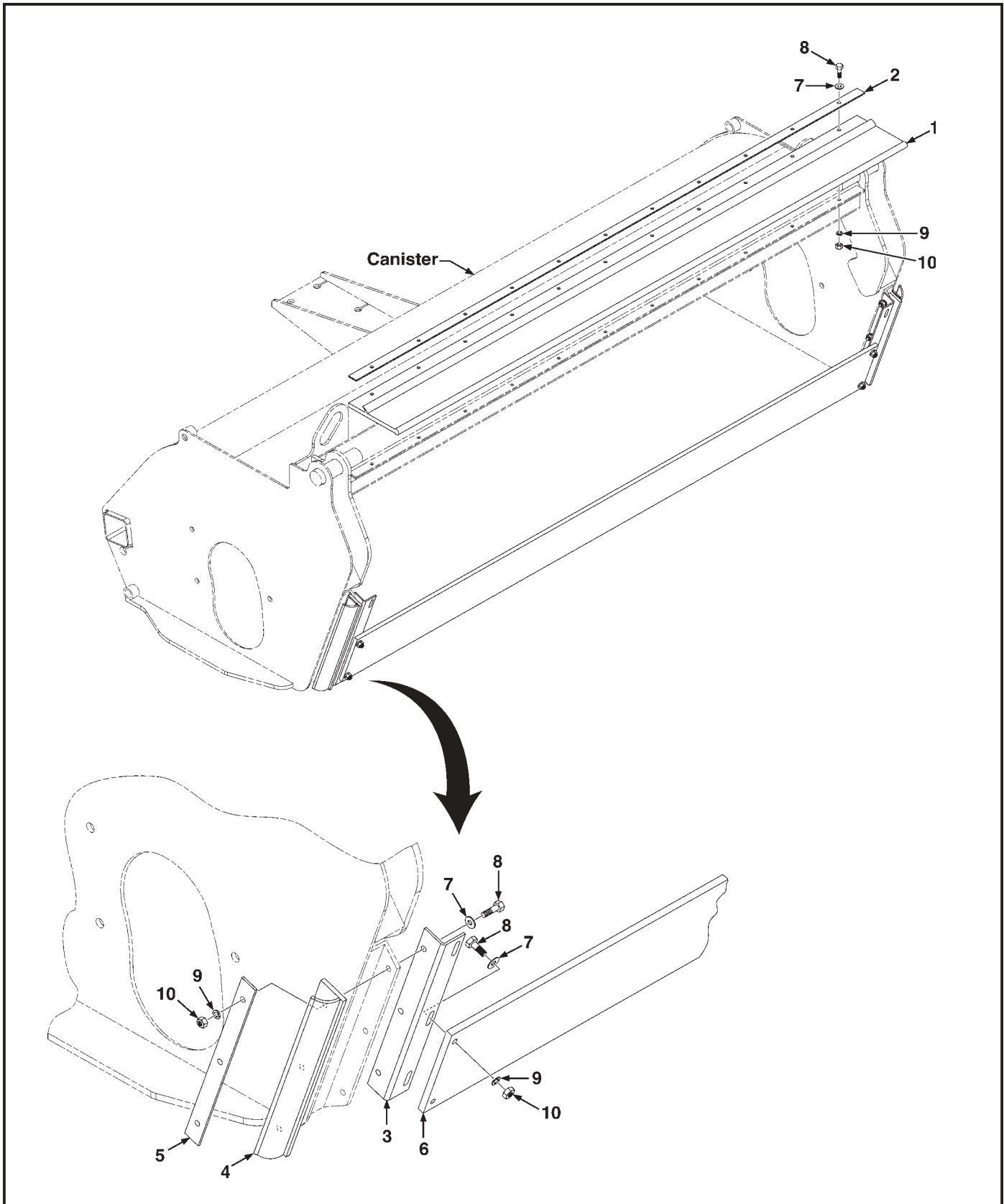




Figure 2. Mustache Brushes

ITEM	PART NUMBER	QTY	DESCRIPTION
1	32565	1	Brush, Mustache, Front, 6" x 58" Long (5' Long Sweeper)
	32566	1	Brush, Mustache, Front, 6" x 70" Long (6' Long Sweeper)
	32567	1	Brush, Mustache, Front, 6" x 82" Long (7' Long Sweeper)
	32568	1	Brush, Mustache, Front, 6" x 94" Long (8' Long Sweeper)
2	32563	1	Retainer, Mustache Brush, Front, 58" Long (5' Long Sweeper)
	32562	1	Retainer, Mustache Brush, Front, 70" Long (6' Long Sweeper)
	32561	1	Retainer, Mustache Brush, Front, 82" Long (7' Long Sweeper)
	32564	1	Retainer, Mustache Brush, Front, 94" Long (8' Long Sweeper)
3	14893	2	Brush, Mustache, Side, 4"
4	11979	2	Retainer, Mustache Brush, Side
5	89251	20	Screw, Self Tapping, #14 x 1-1/2" Long

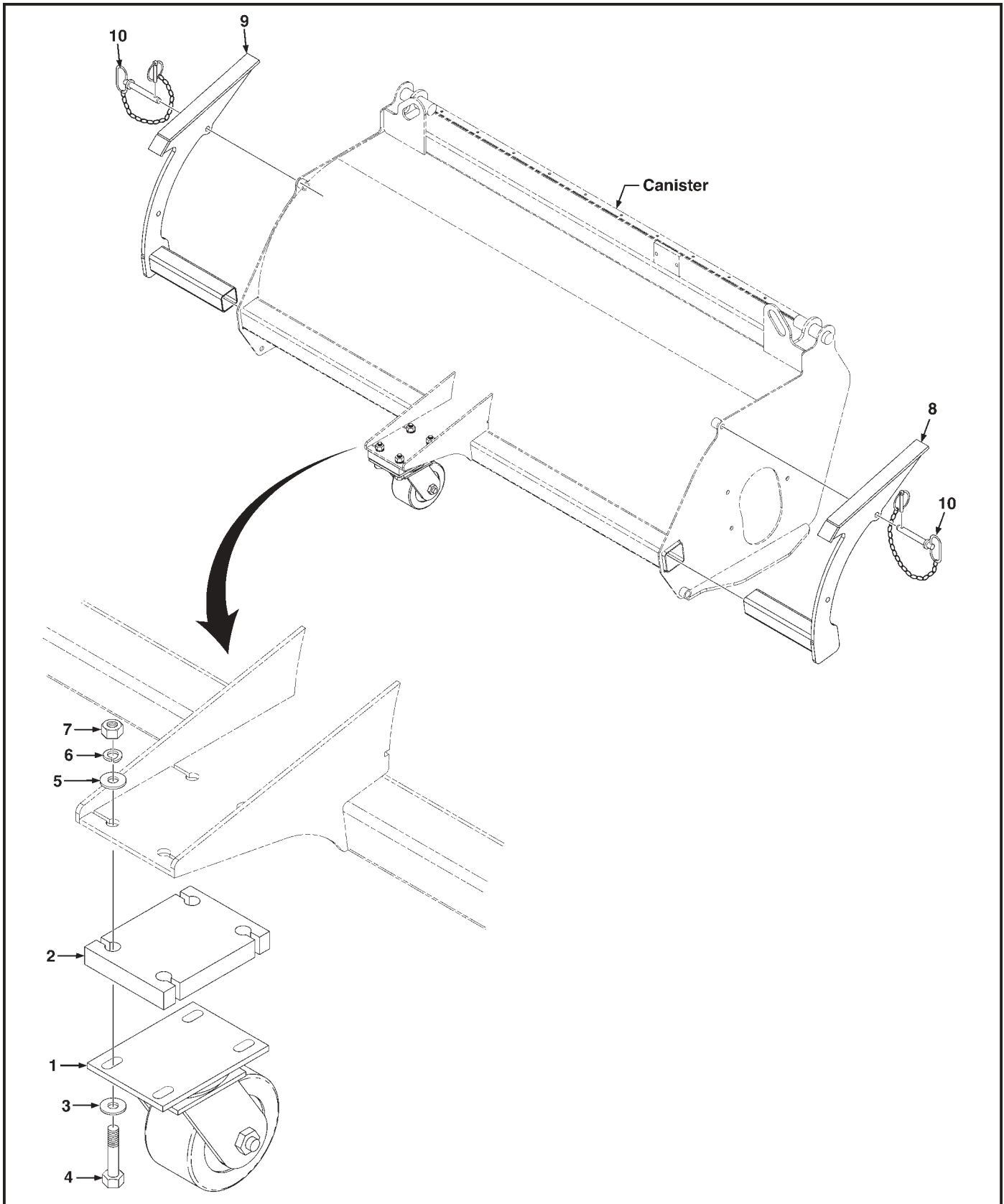
## Figure 3. Bucket Seals



## Figure 3. Bucket Seals

ITEM	PART NUMBER	QTY	DESCRIPTION
1	32571	1	Seal, Top, 53" Long (5' Long Sweeper)
	32570	1	Seal, Top, 65" Long (6' Long Sweeper)
	32569	1	Seal, Top, 77" Long (7' Long Sweeper)
	14855	1	Seal, Top, 89" Long (8' Long Sweeper)
2	32574	1	Retainer, Top Seal, 53" Long (5' Long Sweeper)
	32573	1	Retainer, Top Seal, 65" Long (6' Long Sweeper)
	32572	1	Retainer, Top Seal, 77" Long (7' Long Sweeper)
	14867	1	Retainer, Top Seal, 89" Long (8' Long Sweeper)
3	14881	2	Angle
4	14899	2	Seal, Side, 10-1/2" Long
5	14856	2	Retainer, Side Seal, 1/8" Thick x 1" Wide, 10-1/2" Long
6	32577	1	Plate, Baffle, 54/12" Long (5' Long Sweeper)
	32576	1	Plate, Baffle, 66-1/2" Long (6' Long Sweeper)
	32575	1	Plate, Baffle, 78/12" Long (7' Long Sweeper)
	14892	1	Plate, Baffle, 90-1/2" Long (8' Long Sweeper)
7	1523	AR	Washer, Flat, 1/4"
8	1003	AR	Bolt, Hex Head, 1/4"-28UNC x 1" Long
9	1501	AR	Washer, Lock, 1/4"
10	1224	AR	Nut, Hex, 1/4"-28UNC
			AR-As Required PL-Purchase Locally

## Figure 4. Dolly Wheel and Stand Assemblies

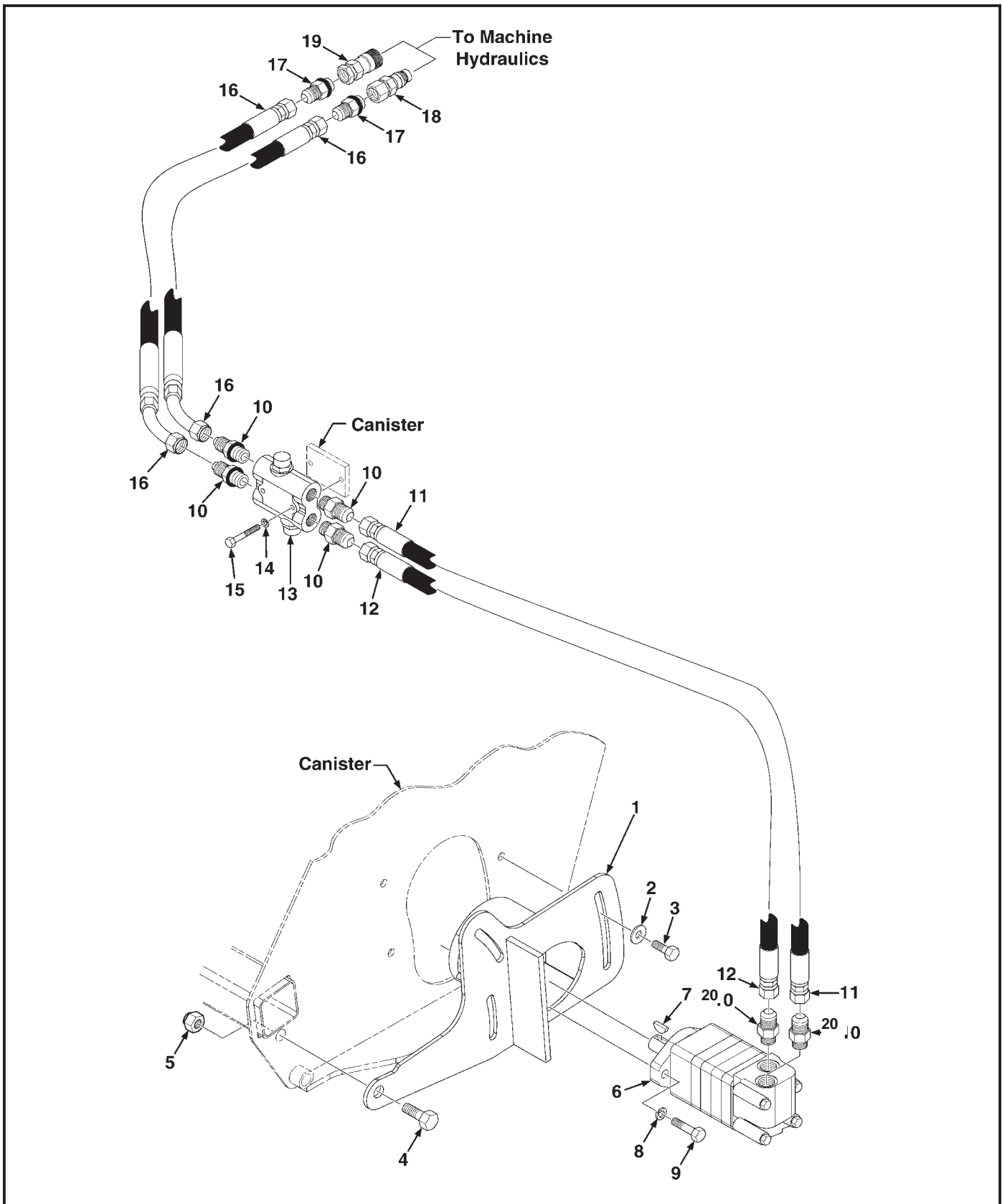


503 Gay Street • P.O. Box 266 • Delhi, Iowa 52223 USA • Phone: 563.922.2981 • Fax: 563.922.2700

## Figure 4. Dolly Wheel and Stand Assemblies

ITEM	PART NUMBER	QTY	DESCRIPTION
1	12231	1	Wheel, Dolly
2	14857	1	Shim, 1" Thick
3	1527	4	Washer, Flat, 1/2"
4	1965	4	Bolt, Hex Head, 1/2"-13UNC x 2-1/2" Long - GR8
5	1527	4	Washer, Flat, Hardened, 1/2"
6	1505	4	Washer, Lock, 1/2"
7	1844	4	Nut, Hex, 1/2"-13UNC - GR8
8	14864	1	Stand Assembly, Left Hand
9	14931	1	Stand Assembly, Right Hand
10	14895	2	Pin, Tee, 1/2" Dia. x 3" Long

## Figure 5. Hydraulics

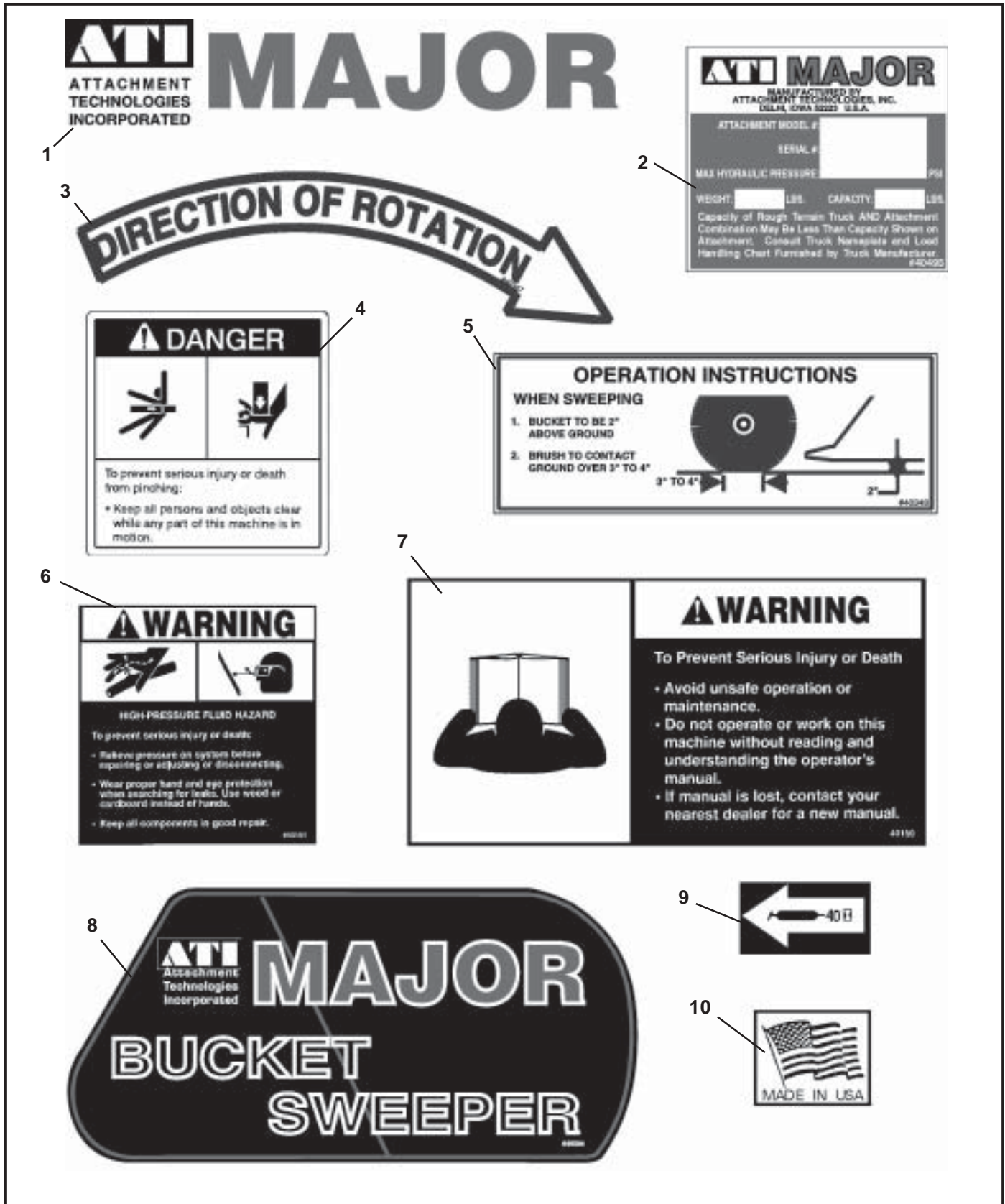


503 Gay Street • P.O. Box 266 • Delhi, Iowa 52223 USA • Phone: 563.922.2981 • Fax: 563.922.2700

## Figure 5. Hydraulics

ITEM	PART NUMBER	QTY	DESCRIPTION
1	14885	1	Mount, Motor
2	1527	3	Washer, Flat, Hardened, 1/2"
3	10024	3	Bolt, Hex Head, 1/2"-20UNF x 1" Long
4	10011	1	Bolt, Hex Head, 3/4"-16UNF x 1-1/2" Long
5	1942	1	Nut, Self Locking, 3/4"-16UNF
6	15219	1	Motor, Hydraulic, Includes Item 7
7	PL	1	Key, Woodruff, 1" Dia. x .250 Thick
8	1505	2	Washer, Lock, 1/2"
9	1691	2	Bolt, Hex Head, 1/2"-20UNF x 1-1/2" Long
10	3102	4	Fitting, #8 JIC x #12 SAE O-Ring
11	3847	1	Hose Assembly, 1/2" x 42" Long
12	3847	1	Hose Assembly, 1/2" x 42" Long
13	11756	1	Valve Block
14	1502	2	Washer, Lock, 1/4"
15	1027	2	Bolt, Hex Head, 5/16"-24UNF x 2-1/4" Long
16	37428	2	Hose Assembly, 1/2" x 84" Long
17	Contact Dealer	2	Fitting
18	Contact Dealer	1	Quick Connect, Male
19	Contact Dealer	1	Quick Connect, Female
20	3270	2	Fitting, #8 JIC x #10 SAE O-Ring
			PL-Purchase Locally

Figure 6. Decals





## Figure 6. Decals

ITEM	PART NUMBER	QTY	DESCRIPTION
1	40502	1	Decal, The Major Small, 11-1/4" Wide x 3-1/2" High (Shown)
	40503	1	Decal, The Major Large, 36" Wide x 11" High (Not Shown)
2	40495	1	Plate, Serial
3	40347	1	Decal, Direction Of Rotation
4	40149	2	Decal, Danger Pinch Points
5	40348	2	Decal, When Sweeping
6	40151	1	Decal, Warning High Pressure Fluid
7	40150	1	Decal, Warning Read Manual
8	40504	2	Decal, Bucket Sweeper
9	4085	3	Decal, Grease 40 Hours
10	4338	1	Decal, Made In USA