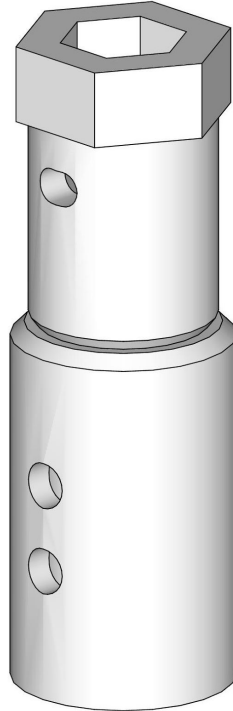
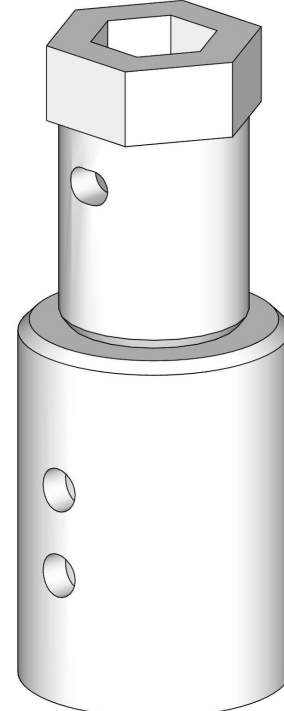


90461



90462



90653

- Machined tube collar for precision fit.
- Heavy duty design to withstand high torque drives.
- Also available with square drive collars.

Most common adapters are listed below.

Screw Pile Diameter	2.875"	3.50"	4.50"	5.50"
2.00" Hex Drive	90473	90474	90819	-
2.50" Hex Drive	90461	90462	90653	-
3.00" Hex Drive	90516	90515	90687	90742

* Other configuration available upon request.