

**Optional
Transport Stand**

- Fully welded square tube design supports drives up to 16,000 ft lbs.
- Designed specifically for Pengo RS, RT, and DT series drives
- Includes greasable swivel between boom and drive.
- Hose clamps keep hoses routed securely along side of boom.
- Supports Pengo TruLink torque monitoring system.
- Optional hose kits and transport stand available.

Anchor Boom Specifications

Model	6000P
Width	46"
Height (Vertical Boom)	76"
Length (Vertical Boom)	38"
Reach	72"
Weight	398 lbs. (Without Drive)
Fits	Pengo RS/RT/DT Series (16,000 ft lbs. Max.)

Torque Monitoring



Pengo TruLink
7" Screen – Part #615070



**Inline Relief Pressure
Differential Kit**
Part #660713

Anchor Boom Drives & Accessories

Compatible Drives



RS-6
6,750 ft. lbs.
2" Hex



RS-7
7,512 ft. lbs.
2" Hex



RS-12
13,014 ft. lbs.
2.5" Hex



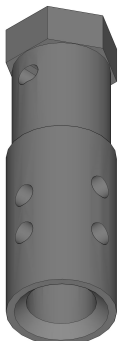
RT-12
12,330 ft. lbs.
2.5" Hex



RS-16
16,041 ft. lbs.
2.5" Hex

RS	Single Speed
RT	Two Speed

Screw Pile Adapters



Model	90473	90474	90461	90462
Output Shaft Size (Drive)	2.0" Hex	2.0" Hex	2.5" Hex	2.5" Hex
Screw Pile OD	2.78"	3.50"	2.78"	3.50"