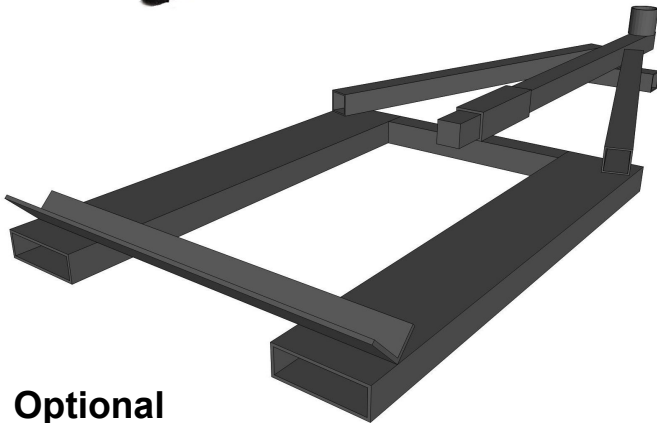




<b>Model</b>	<b>6000P</b>
<b>Width</b>	46"
<b>Height (Vertical Boom)</b>	76"
<b>Length (Vertical Boom)</b>	38"
<b>Reach</b>	72"
<b>Weight</b>	398 lbs. (Without Drive)
<b>Fits</b>	Dinamic Oil 45mm. (16,000 ft lbs. Max.)



**Optional  
Transport Stand**

- Fully welded square tube design supports drives up to 16,000 ft lbs.
- Designed specifically for Dinamic Oil 45mm.
- Includes greasable swivel between boom and drive.
- Hose clamps keep hoses routed securely along side of boom.
- Optional hose kits and transport stand available.

# Anchor Boom Drives & Accessories

## Compatible Drives



**SA7-B**  
7,381 ft. lbs.  
2" Hex



**SA12-B**  
12,879 ft. lbs.  
2.5" Hex



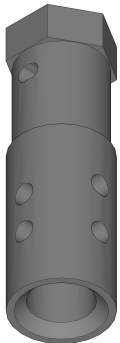
**SA16-B**  
17,190 ft. lbs.  
2.5" Hex



**TA16-B**  
17,340 ft. lbs.  
2.5" Hex

SA	Single Speed
TA	Two Speed

## Screw Pile Adapters



Model	90473	90474	90819	90461	90462	90653
Output Shaft Size (Drive)	2.0" Hex	2.0" Hex	2.0" Hex	2.5" Hex	2.5" Hex	2.5" Hex
Screw Pile OD	2.78"	3.50"	4.50"	2.78"	3.50"	4.50"