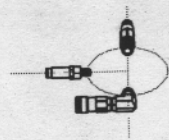
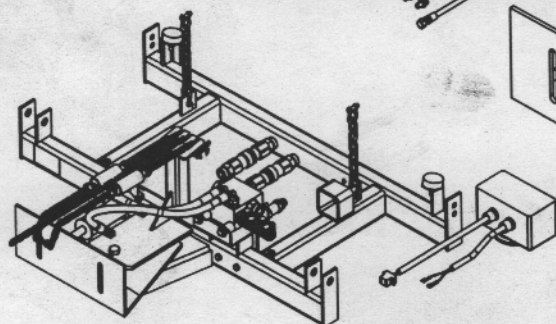
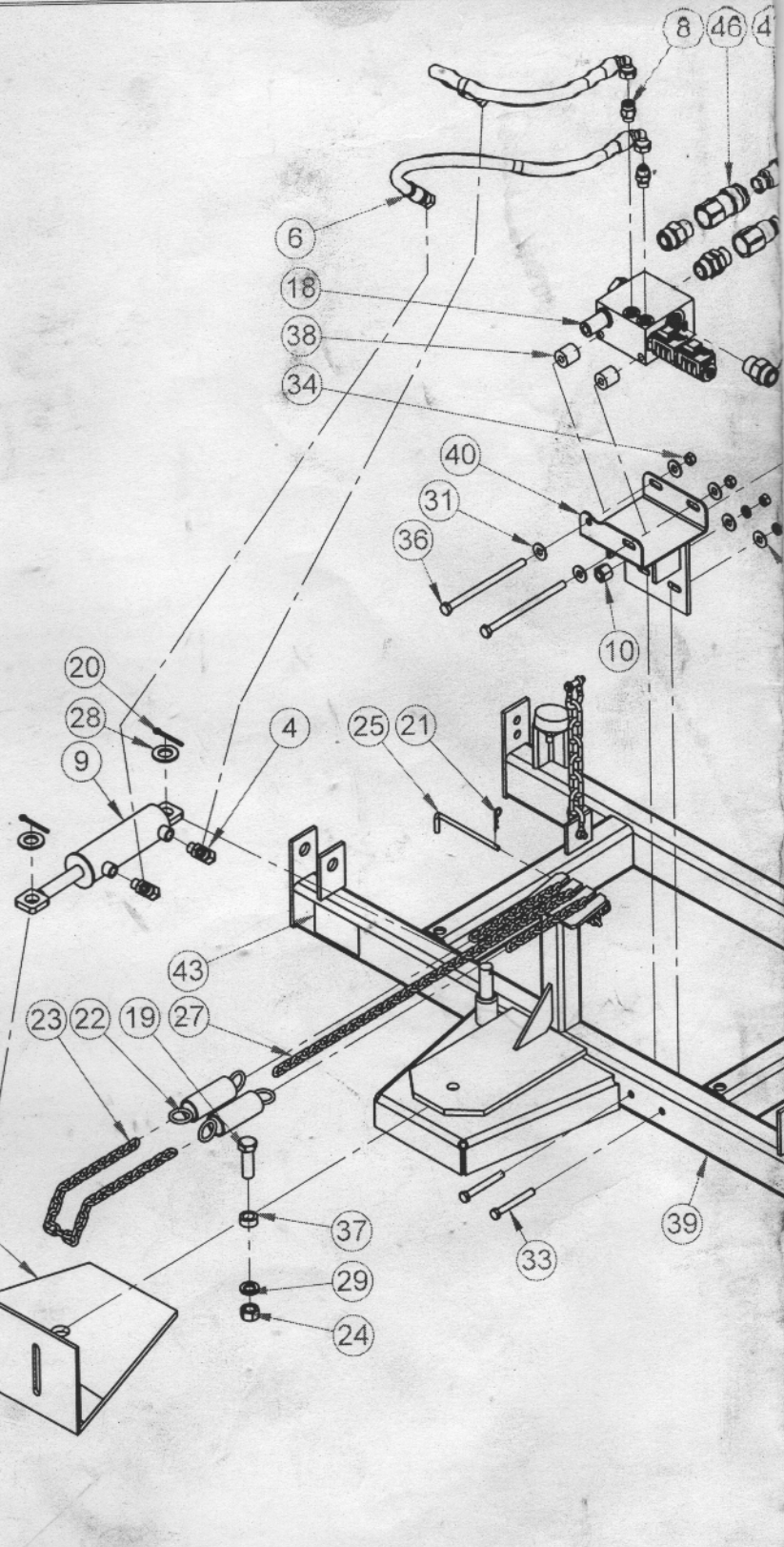
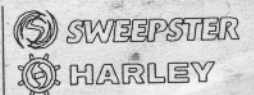


CUTTING DECK QUICK DISCONNECT FITTINGS



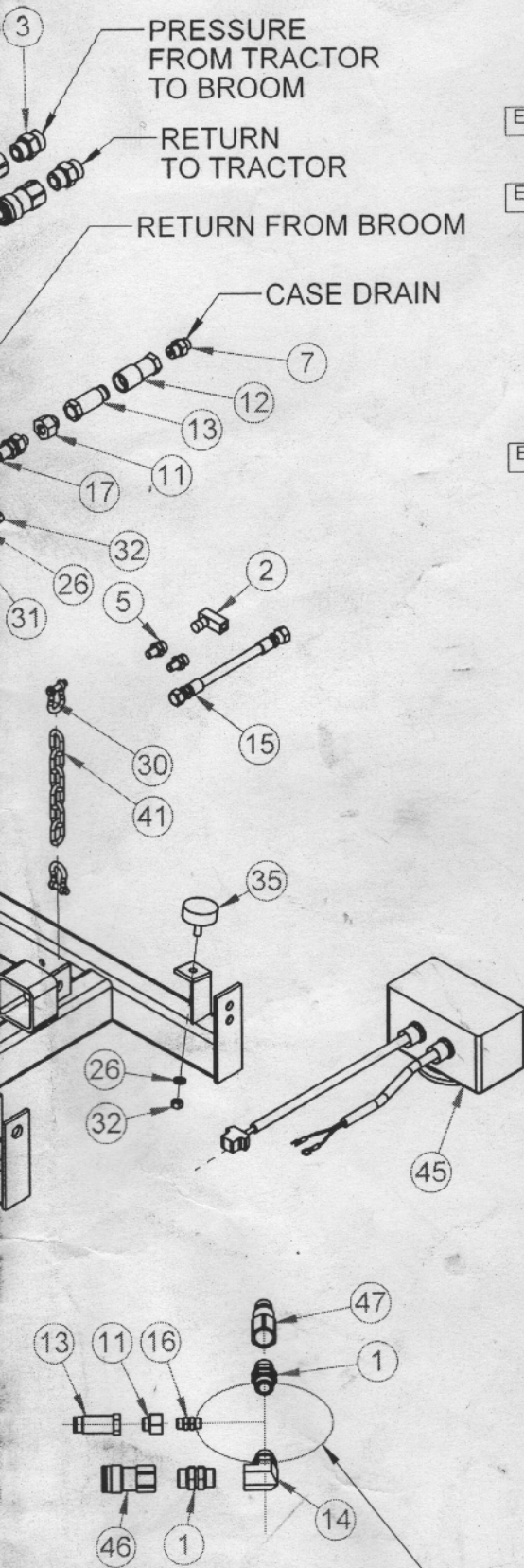
NOTE:  
1. SEE W/O FOR POWDER & PACKAGING



PAVLA DEN LIGHT CONSTRUCTION

THIS DRAWING  
THEREOF  
MUST NOT BE  
PRIOR CONSENT  
MENTAL  
CAD: S

E	MCR# 0561 - ADDED 031420, 03-2159 & 03-4316.	NLM	4/9/09	RT	4/9/09
REV	DESCRIPTION	REVISED	DATE	CHECKED	DATE



PART NO.  
11-17546

ITEM	PART NO.	QTY.	DESCRIPTION
1	03-0573	3	FTG 12MB-12MB UN
E 2	03-1420	1	VALVE, NEEDLE, 1/4 IN LINE
3	03-1945	4	FTG 12MB-12MF
4	03-2092	2	ELBOW 90 6MB-6MF CAT 6C5OLO-S
E 5	03-2159	2	FTG 6MF-4MP
6	03-2271	2	HOSE .38X24, 6FF-6FF90, 4.75K
7	03-2278	1	FTG 6MF-8MB
8	03-2291	2	FTG 6MF-6MB 6F5OLO-S
9	03-3381	1	CYL, 1 3/4 X 4 X 9, POLYPAC, BLACK
10	03-3408	1	CAP 6F
11	03-3556	2	FTG 6FB-8MB
12	03-3861	1	QD 8 FF F 8FB
13	03-3862	2	QD 8 FF M 8FB
14	03-4095	1	ELBOW 90 12MB-12FB
E 15	03-4316	1	HOSE .25 X 20 6FF 6FF 3K TC
16	03-4411	1	FTG 6MB-6MB UN
17	03-4412	1	FTG 6MB-6MF BHD
18	03-5215	1	MANF SWING 12V
19	07-0066	1	SCREW, HHC, GR8, 5/8-11 X 2, YDC
20	07-0206	2	PIN, CTR, GR2, 3/16 x 2 YLW, DI-CR
21	07-0209	1	CLIP, HAIRPIN, 16GA X 1 3/8
22	07-0237	2	SPRING, TENS, 1 13/32 X 6
23	07-0387	2	CHAIN 3/16 26 LINKS
24	07-1294	1	NUT HEX GR8 5/8-11 YDC
25	07-1709	1	PIN, CHAIN KEEPER, 1/4 X 4 1/2, PLD
26	07-1718	4	WASHER LOCK SPLIT MED 3/8 PLD
27	07-1759	1	CHAIN 3/16 36 LINKS
28	07-1782	2	WASHER FL GR2 3/4 SAE 1 1/2 OD YDC
29	07-1872	1	WASHER, LOCK, SPLIT, MED, 5/8, YDC
30	07-2046	4	SHACKLE CHAIN 5/16 W/RD PIN&COTTER GALV
31	07-3279	6	WASHER FL GR8 3/8 PLD
32	07-3654	4	NUT HEX GR8 3/8-16 YDC
33	07-3660	2	SCREW, HHC, GR8, 3/8-16 X 3, YDC
34	07-4622	2	NUT HEX LOCK ST M10-1.5 CL10.9 YDC #6V-7744
35	07-5903	2	MOUNT VIBRATION SINGLE END MALE 3/8-16 STUD
36	07-7131	2	SCREW HHC CL10.9 M10-1.5 X 160MM PLATED
37	11-7479	1	BUSHING, 1 X 5/8 X 7/16
38	13-11248	2	BUSHING 1.00 X .406 ID X 1.00
39	13-12490	1	WELD FRM MTG&SWG MRH JD1600 WAM
40	13-13319	1	WELD MTG SWG MANIFOLD JD1600 WAM
41	13-4163	2	CHAIN 1/4 6 LINKS
42	13-4206	1	WELD PLATE SWG TOP PIN
43	50-0635	1	LABEL, PART#/DATE, SWEEPSTER COMPLETE
44	LAF9441	1	WIRE HARNESS
45	LAF9444	1	WIRE HARNESS W/BOX F/SOLENOID ANGLING BLOCK
46	P272670	3	QD 12FF F 12FB
47	P272671	3	QD 12FF M 12FB

NUMBERS & QUANTITIES,

CUTTING DECK MOTOR

ALL INFORMATION IS PROPERTY OF PALADIN AND BE USED IN ANY WAY WITHOUT THE INTERESTS OF PALADIN	TOLERANCE UNLESS OTHERWISE SPECIFIED .XX ± .01 .XXX ± .030 .XXXX ± .0100 ANGULAR ± 1°	PRODUCT: NA	TITLE: ASSY MTG&SWG CTH-H JD1600 WAM E SWG VALVE		
		REF: NA	MATERIAL: SEE PARTS		
SHEET: B-SIZE		DO NOT SCALE	DRAWN BY	DATE	REV
UNITS: INCHES [MILLIMETERS]		DEBURR PART	NLM	9/24/03	E