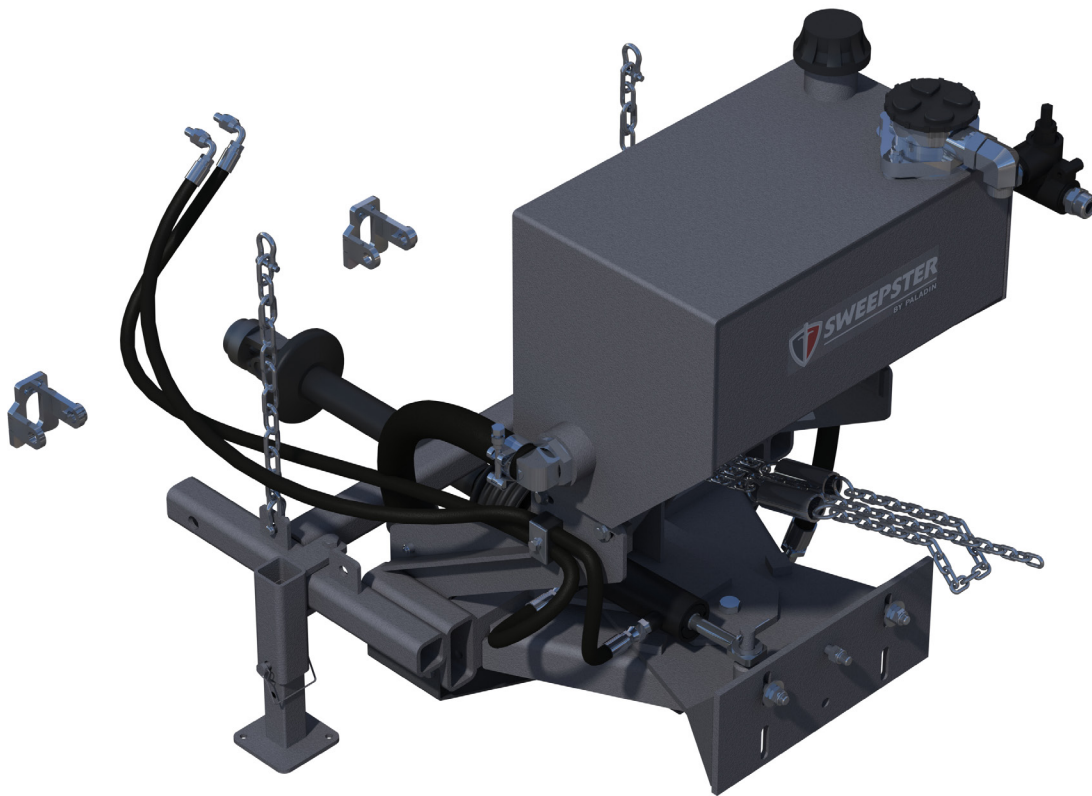




# INSTALLATION INSTRUCTIONS

## CTH, FRONT TANK

**FOR  
JOHN DEERE 1445**



Complete operator's and parts manuals are supplied with the Sweeper.

Instructions Number: 51-4744  
Part Number: 11-17624  
Release Date: August 2019  
Rev. 2

**THIS PAGE  
IS INTENTIONALLY  
BLANK**

## MOUNTING INSTRUCTIONS

1. Unpack parts and then compare them to the parts list. If you discover any shortages, contact PALADIN or your dealer.

**NOTE: Unless noted otherwise, right and left sides are determined from the operator's control position when facing forward.**

2. Remove the mower deck and drive shaft from the prime mover.
3. Unpin the lift cylinder and slide the cylinder stops over prime mover lift cylinder ball joint and reattach the cylinder and cylinder stops to prime mover.
4. Attach the mounting frame to the prime mover using pins from mower.
5. Connect chains on the sweeper mounting frame to the prime mover frame.
6. Attach the tank to the mounting frame using hardware provided.
7. Connect the drive shaft to the bearing and the prime mover PTO. Tighten the hardware.

**WARNING! Keep hands, feet and clothing away from power driven parts while tractor engine is running. Failure to do so could result in serious injury or death.**



8. Install barb fittings on the tank and the pump inlet.
9. Connect the suction hose to the barb fittings with clamps.
10. Connect the return-line hose from the pump assembly to the tank.

**NOTICE! AVOID HOSE AND WIRE DAMAGE. Keep hoses and wires away from hot and/or moving parts.**

11. Install the swing assembly and brush head according to operator's manual instructions with the following exception:
  - Use hardware provided in this assembly to mount brush head to swing plate.
  - Center screw should be tight enough to still allow brush frame to pivot side to side.
  - The two outside screws should be tight enough so the brush frame will still pivot.
  - Hardware tension may need to be adjusted to get desired brush frame pivoting.

**WARNING! Escaping hydraulic / diesel fluid under pressure can penetrate the skin causing serious injury. Fluid escaping from a very small hole can be almost invisible. Use a piece of cardboard or wood, rather than hands to search for suspected leaks.**



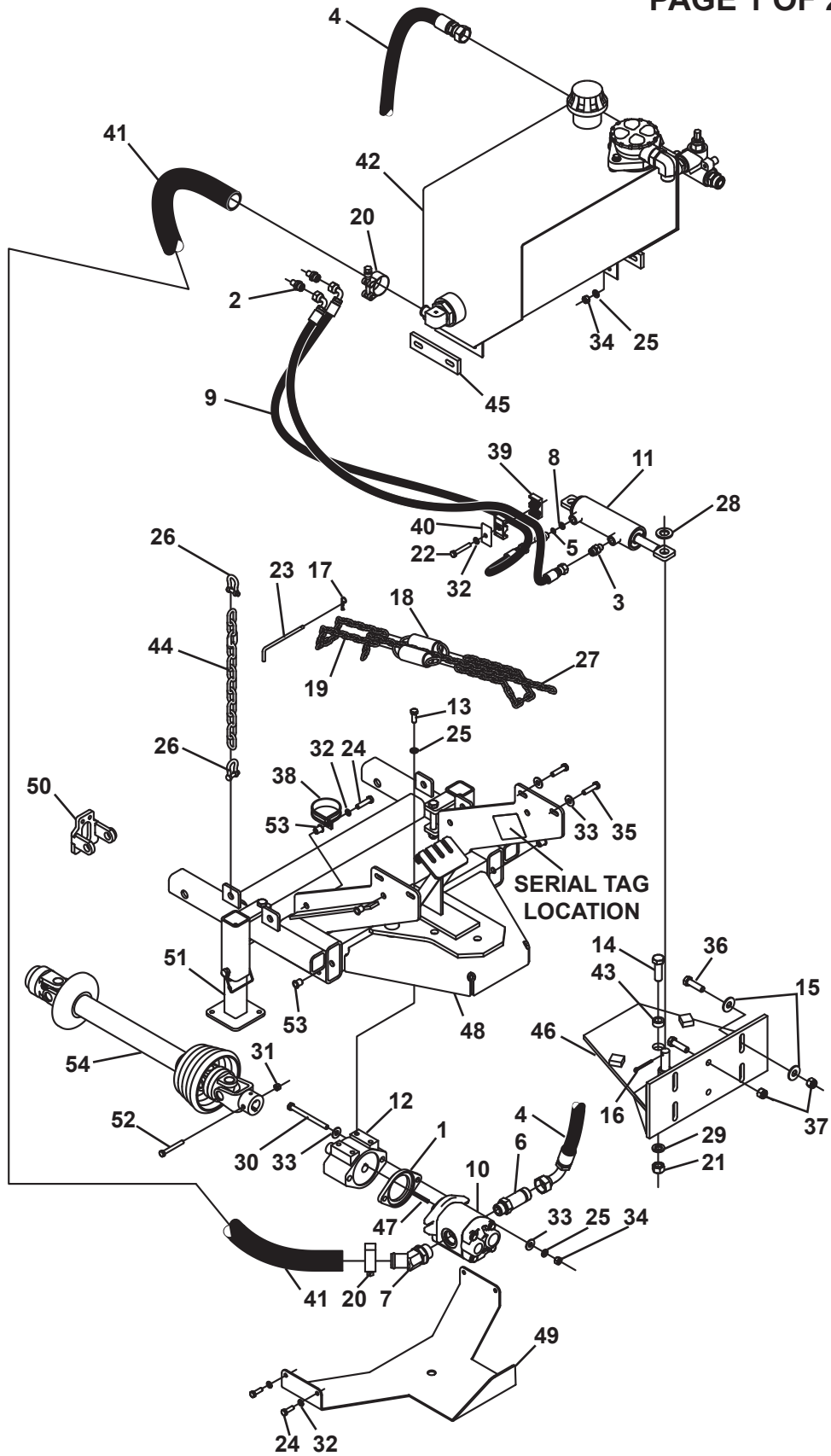
**Keep unprotected body parts, such as face, eyes, and arms as far away as possible from a suspected leak. Flesh injected with hydraulic fluid may develop gangrene or other permanent disabilities. If injured by injected fluid, see a doctor at once.**

**Stop the engine and relieve pressure before connecting or disconnecting lines. Tighten all connections before starting engine or pressurizing lines.**

# MOUNTING ASSEMBLY

Assembly 11-17624

PAGE 1 OF 2



# MOUNTING ASSEMBLY

Assembly 11-17624

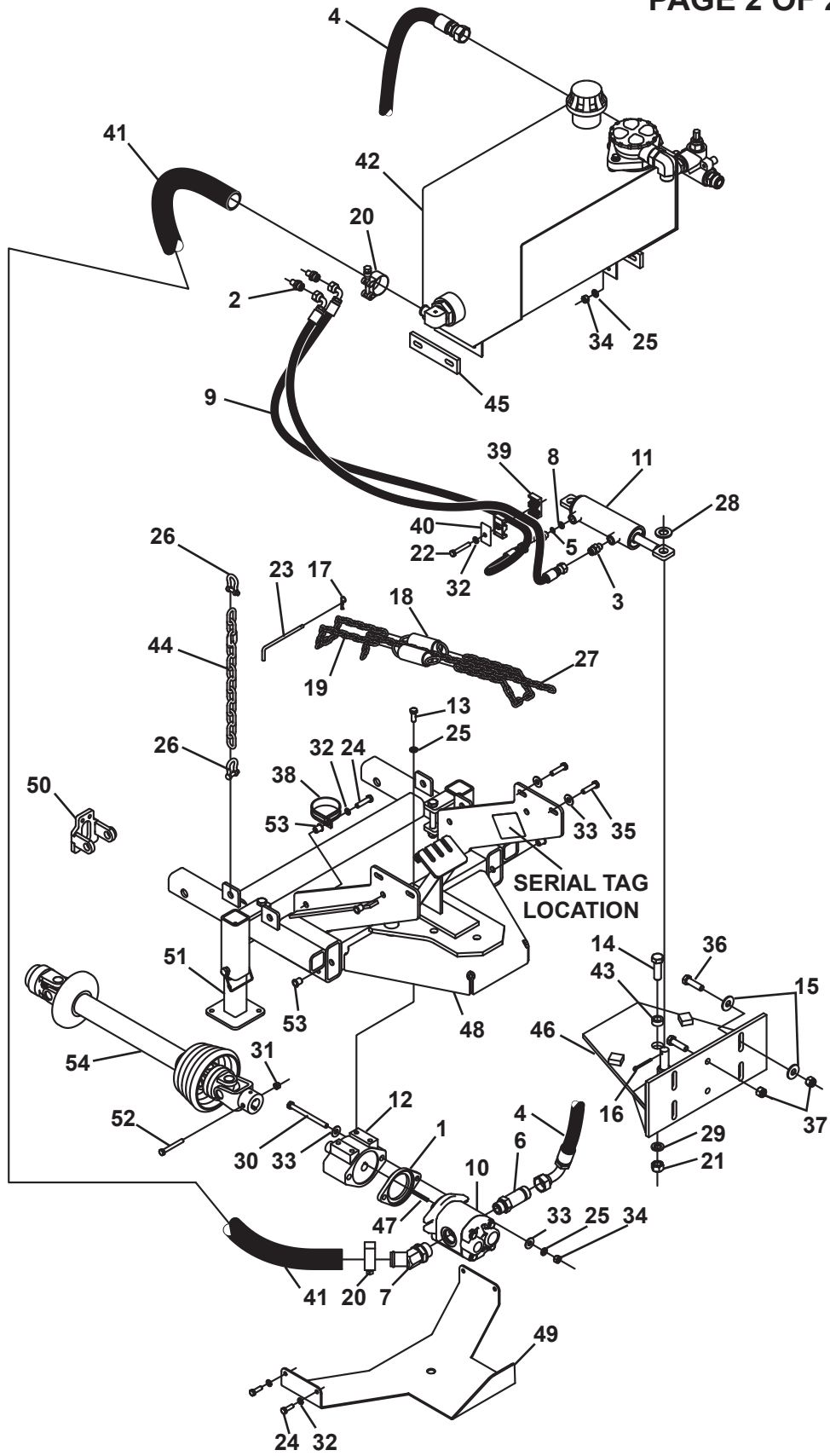
PAGE 1 OF 2

<u>ITEM</u>	<u>REQ'D</u>	<u>PART NO.</u>	<u>DESCRIPTION</u>
1	1	03-1334	PTO Spacer
2	2	03-2159	Fitting 6MFS-4MP
3	2	03-2291	Fitting 6MBo-6MFS
4	1	03-2576	Hose .75" X 36" 12FFS-12FFS 90°
5	1	03-3573	O-Ring
6	1	03-4096	Fitting 12MBo-12MFS
7	1	03-4478	Hose Barb 45° 20MBo-16MBo
8	1	03-4668	Orifice
9	2	03-5236	Hose .38" X 42" 6FFS-6FFS 90°
10	1	03-5324	PTO Pump 1.65 CID
11	1	03-5719	Cylinder Assembly
12	1	05-0802	Bearing
13	4	07-0018	.38" UNC X 1.00" Hex Capscrew - GR8
14	1	07-0066	.62" UNC X 2.00" Hex Capscrew - GR8
15	4	07-0156	.50" Flat Washer - GR8
16	2	07-0206	Cotter Pin .19" X 2.00" - GR2
17	1	07-0209	Hair Pin - 1.38"
18	2	07-0237	Tension Spring
19	2	07-0387	Chain .18" X 26 Links
20	2	07-1192	1.25" T-Bolt Clamp
21	1	07-1294	.62" UNC Hex Nut - GR8
22	1	07-1698	.31" UNC X 2.00" Hex Capscrew - GR8
23	1	07-1709	Chain Keeper .25" X 4.50"
24	5	07-1714	.31" UNC X 1.00" Hex Capscrew - GR8
25	10	07-1718	.38" Lock Washer

# MOUNTING ASSEMBLY

Assembly 11-17624

PAGE 2 OF 2



# MOUNTING ASSEMBLY

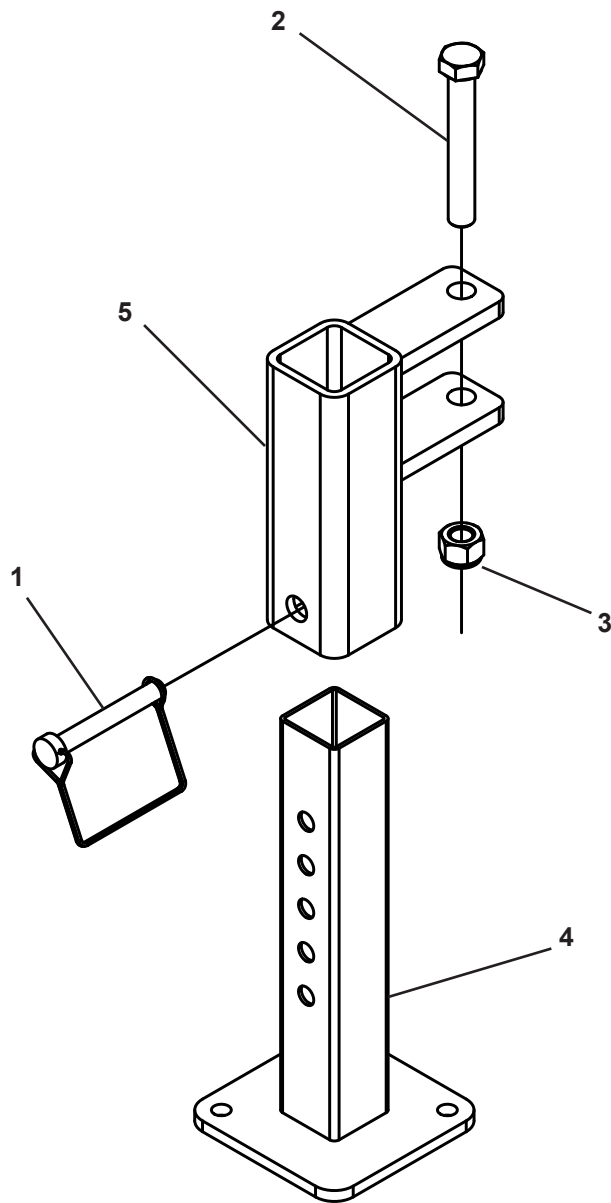
Assembly 11-17624

PAGE 2 OF 2

<u>ITEM</u>	<u>REQ'D</u>	<u>PART NO.</u>	<u>DESCRIPTION</u>
26	4	07-1732	.25" Shackle with Pin
27	1	07-1759	Chain .31" X 36 Links
28	2	07-1782	.75" Hard Flat Washer
29	1	07-1872	.62" Lock Washer
30	2	07-2488	.38" UNC X 4.50" Hex Capscrew - GR8
31	1	07-3270	.31" UNC Nylock Nut - GR8
32	6	07-3273	.31" Lock Washer
33	8	07-3279	.38" Flat Washer - GR8
34	6	07-3654	.38" UNC Hex Nut - GR8
35	4	07-3655	.38" UNC X 1.50" Hex Capscrew - GR8
36	3	07-3671	.50" UNC X 1.75" Hex Capscrew - GR8
37	3	07-4037	.50" UNC Nylock Nut - GR8
38	1	07-6427	Suction Hose Clamp
39	1	07-7089	Hose Cradle
40	1	07-7090	Cover Plate
41	2.75 ft.	09-0020	Suction Hose 1.25"
42	1	11-5444	Tank
43	1	11-7479	Bushing 1" X .62" X .44"
44	2	13-2896	Chain .25" X 12 Links
45	2	13-11707	Spacer
46	1	13-17224	Swing Plate
47	1	13-17791	Key
48	1	13-19695	Mounting Frame
49	1	13-19701	Pump Cover
50	2	13-20693	Stop Bracket
51	1	28-10522	Bolt-on Stand
52	1	RHW1112	.31" UNC X 2.50" Hex Capscrew
53	4	RHW8642	.31" UNC Rivet Nut
54	1	TCA19050	PTO Shaft

# BOLT-ON STAND ASSEMBLY

Assembly 28-10522





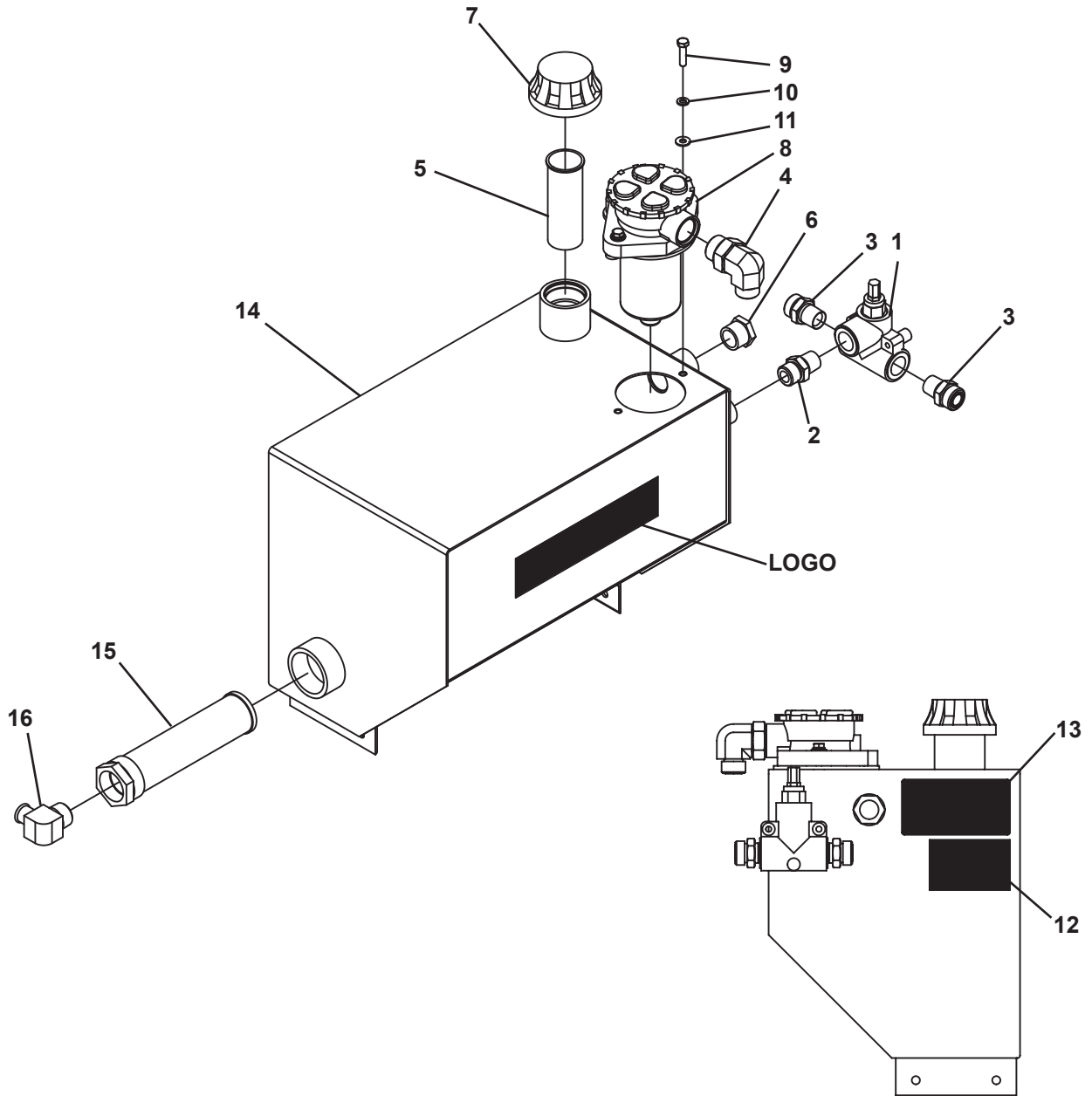
# BOLT-ON STAND ASSEMBLY

Assembly 28-10522

<u>ITEM</u>	<u>REQ'D</u>	<u>PART NO.</u>	<u>DESCRIPTION</u>
1	2	07-2105	Lock Pin .38"
2	2	07-3441	.50" UNC X 3.50" Hex Capscrew - GR8
3	2	07-4037	.50" UNC Nylock Nut - GR8
4	2	13-17227	Stand
5	2	13-17229	Stand Mount

# TANK ASSEMBLY

Assembly 11-5444



# TANK ASSEMBLY

Assembly 11-5444

<u>ITEM</u>	<u>REQ'D</u>	<u>PART NO.</u>	<u>DESCRIPTION</u>
1	1	03-0129	Valve
2	1	03-0938	Fitting 12MBo-12MP
3	2	03-1943	Straight Adapter 12MFS-12MP
4	1	03-1956	90° Elbow 12MF-16MBo
5	1	03-4642	Screen
6	1	03-4709	Sight Gauge
7	1	03-5055	Breather Cap - 5psi
8	1	03-5056	In Tank Filter 39GPM
9	2	07-1973	.31" UNC X 1.25" Hex Capscrew
10	2	07-3273	.31" Lock Washer
11	2	07-4032	.25" Flat Washer - GR8
12	1	50-0272	Oil, ISO VG 46 Decal
13	1	50-0725	Warning! High Pressure Fluid
14	1	13-17790	Tank
15	1	03-6366	Strainer
16	1	03-6367	Barb 20MP-20MP 90°



# 50-0272 IMPORTANT! USE HYDRAULIC OIL WITH AN ISO VG 46 RATING.



# 50-0725 WARNING! HIGH PRESSURE FLUID HAZARD

**Note: Contact your local dealer for model number and logo decals**