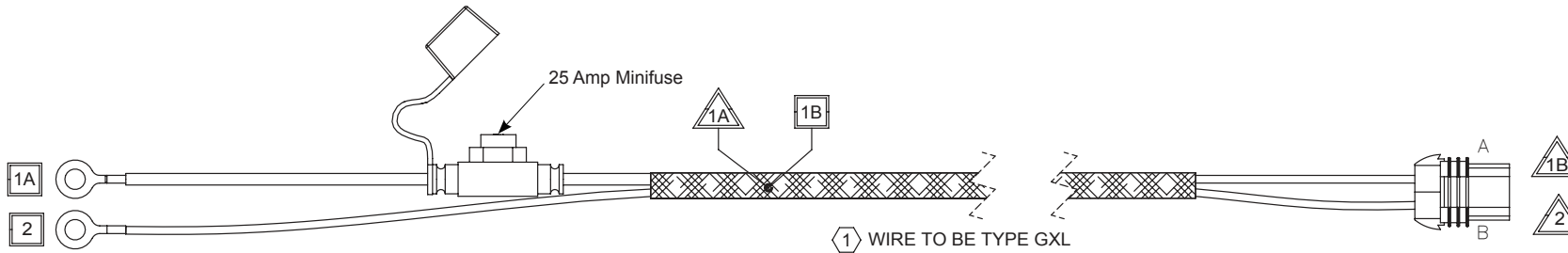


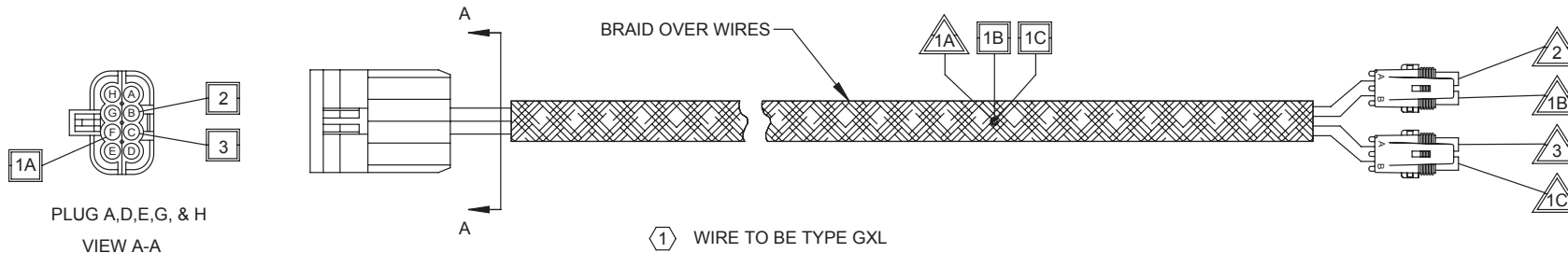
# 07-7733

WIRE NO.	WIRE				□ END (LEFT) (BEYOND HARNESS)			△ END (LEFT) (BEYOND HARNESS)			WIRE NO.		
	GAUGE	IDENTIFICATION	APPLICATION		TERMINAL		EXTRA WIDE PROTECTION		TERMINAL			EXTRA WIDE PROTECTION	
			□ FROM	△ TO	SIZE	TYPE	YES	NO	SIZE	TYPE		YES	NO
1A	12	RED	BATTERY (+)	ULTRA SONIC SPLICE	0.38	RING TERMINAL (WAYTEK # 32205)	-	X	-	ULTRA SONIC SPLICE	-	X	1A
1B	12	RED	ULTRA SONIC SPLICE	PACKARD PIN A	-	ULTRA SONIC SPLICE	-	X	-	PACKARD 12129493 & SEAL	-	X	1B
2	12	BLACK	BATTERY (-)	PACKARD PIN B	0.38	RING TERMINAL (WAYTEK # 32205)	-	X	-	PACKARD 12129493 & SEAL	-	X	2



# 07-7737

WIRE NO.	WIRE				□ END (LEFT) (BEYOND HARNESS)			△ END (RIGHT) (BEYOND HARNESS)			WIRE NO.		
	GAUGE	IDENTIFICATION	APPLICATION		TERMINAL		EXTRA WIDE PROTECTION		TERMINAL			EXTRA WIDE PROTECTION	
			□ FROM	△ TO	SIZE	TYPE	YES	NO	SIZE	TYPE		YES	NO
1A	16	BLACK	PACKARD PIN F	ULTRA SONIC SPLICE	-	PACKARD 12045773 & SEAL	-	X	-	ULTRA SONIC SPLICE	-	X	1A
1B	16	BLACK	ULTRA SONIC SPLICE	DEUTSCH 1 PIN B	-	ULTRA SONIC SPLICE	-	X	-	DEUTSCH 0462-201-16141 & SEAL	-	X	1B
1C	16	BLACK	ULTRA SONIC SPLICE	DEUTSCH 2 PIN B	-	ULTRA SONIC SPLICE	-	X	-	DEUTSCH 0462-201-16141 & SEAL	-	X	1C
2	16	RED	PACKARD PIN B	DEUTSCH 1 PIN A	-	PACKARD 12045773 & SEAL	-	X	-	DEUTSCH 0462-201-16141 & SEAL	-	X	2
3	16	YELLOW	PACKARD PIN C	DEUTSCH 2 PIN A	-	PACKARD 12045773 & SEAL	-	X	-	DEUTSCH 0462-201-16141 & SEAL	-	X	3



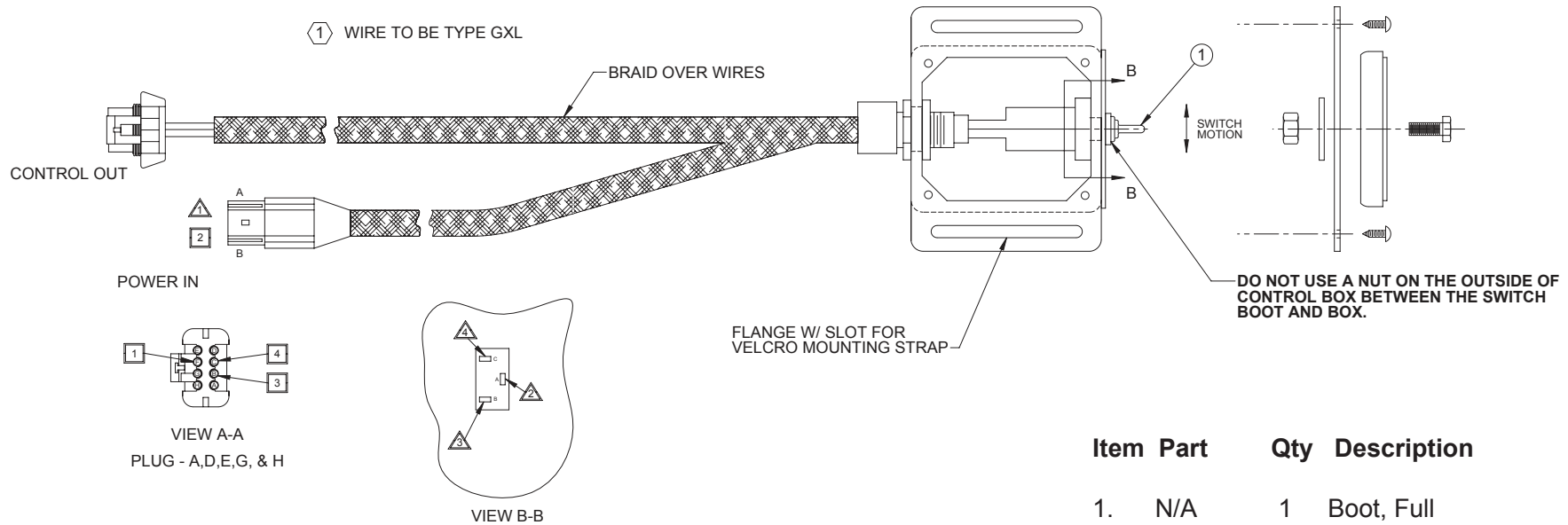
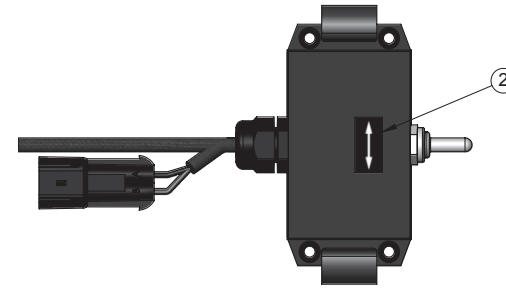
Wiring Harness

TROUBLESHOOTING  
Serial Number 1119001 & Up

# 07-7734

## Wiring Harness

WIRE NO.	GAUGE	WIRE		□ END (LEFT) (BEYOND HARNESS)				△ END (RIGHT) (BEYOND HARNESS)				WIRE NO.	
		IDENTIFICATION	APPLICATION		TERMINAL		EXTRA WIDE PROTECTION		TERMINAL		EXTRA WIDE PROTECTION		
			□ FROM	△ TO	SIZE	TYPE	YES	NO	SIZE	TYPE	YES		NO
1	16	BLACK	PACKARD PIN F (8-PIN)	PACKARD PIN A (2-PIN)	-	PACKARD 12048159 & SEAL	-	X	-	PACKARD 12048074 & SEAL	-	X	1
2	16	RED	PACKARD PIN B (2-PIN)	SWITCH 1-A	-	PACKARD 12048159 & SEAL	-	X	0.25	SPADE TERMINAL (FEMALE)	-	X	2
3	16	RED	PACKARD PIN B (8-PIN)	SWITCH 1-B	-	PACKARD 12048074 & SEAL	-	X	0.25	SPADE TERMINAL (FEMALE)	-	X	3
4	16	YELLOW	PACKARD PIN C (8-PIN)	SWITCH 1-C	-	PACKARD 12048074 & SEAL	-	X	0.25	SPADE TERMINAL (FEMALE)	-	X	4



## TROUBLESHOOTING

Serial Number 1119001 & Up

Item	Part	Qty	Description
1.	N/A	1	Boot, Full
2.	50-0942	1	Decal, Swing Arrow