

# MOUNTING INSTRUCTIONS

**Tractor Make: Kubota**

**Assembly: 11-17605**

**Tractor Models: F2880, F2880E, F3680**

**Sweeper: CTH**

1. Unpack parts and then compare them to the parts list. If you discover any shortages, contact SWEEPSTER or your dealer.
2. Remove the mower deck from the tractor arms (Figure 1).
3. Pin the front of the mounting frame to the tractor arms using clevis pins provided.
4. Attach the rear mounting plates to the rear tabs on the tractor arms (Figure 2). Use hardware provided.
5. Attach the splined U-joint to the rectangular drive shaft. Install the U-joint on the tractor PTO shaft. Tighten the hardware.
6. Place a bushing in both holes in the tractor's rear weight bracket.
7. Install the tank mounting plate on the weight bracket with screws, lock washers and nuts provided (Figure 3). (The washers and nuts go on the outside.) Tighten the hardware.



Figure 2

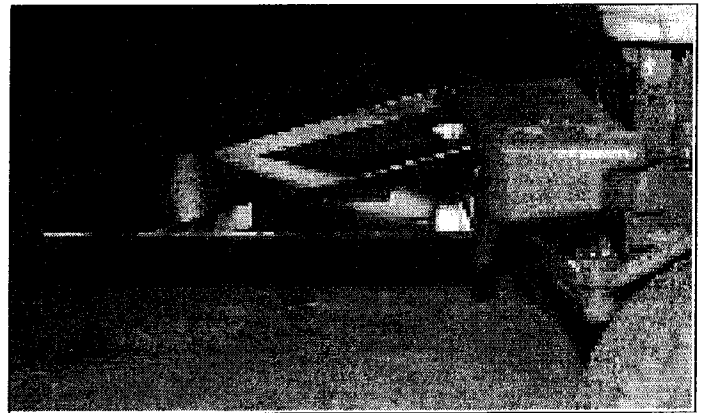


Figure 3

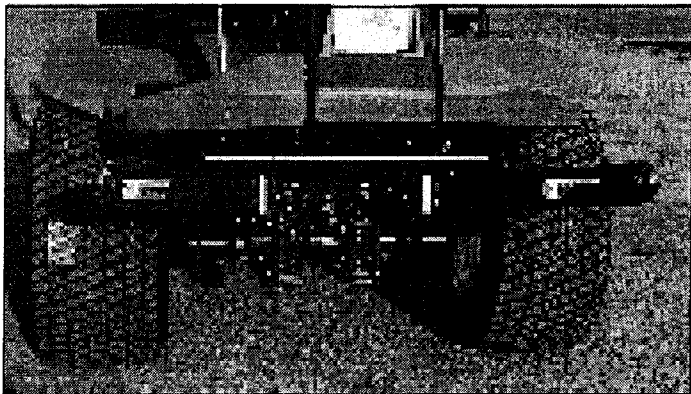


Figure 1



2800 North Zeeb Road • Dexter, Michigan 48130-9797  
734-996-9116 • 1-800-456-7100 • FAX (734) 996-9014

51-4146, 4/08

# MOUNTING INSTRUCTIONS

Tractor Make: Kubota

Assembly: 11-17605

Tractor Models: F2880, F2880E, F3680

Sweeper: CTH

8. Attach the tank to the tank mounting plate with hardware provided. (Ports go toward the right-hand side of the tank mounting [Figure 4].) Tighten the hardware.

NOTE: *Right-hand and left-hand are determined from the perspective of the operator's seat.*

9. Attach the suction hose to the pump inlet and to the tank outlet barb fitting. Secure with clamps provided.
10. Attach the 120 in. (3.1 m) hose from the return port on the relief valve to the filter. Tighten the hose.
11. On the right-hand side of the tractor, attach a clamp to the plate at the bottom of the roll bar. Place the suction hose and 120 in. (3.1 m) hose in the clamp.
12. Install the brush head and spring-chain assemblies according to instructions in the operator's manual.
13. Attach 98 in. (2.5 m) hoses to the brush head motor and to the pump. Connect the pressure hose to the bottom port on the pump and the front port on the brush head motor. Connect the return hose to the top port on the pump and the rear port on the brush head motor. (See Figure 5).
14. Fill the hydraulic tank with oil. (Refer to the operator's manual.)
15. Start the tractor and run it at a low rpm. Engage and disengage the PTO until the brush begins to rotate. Then engage the PTO to run the brush head. Check for hydraulic leaks.
16. Make adjustments according to the operator's manual instructions before using the sweeper.

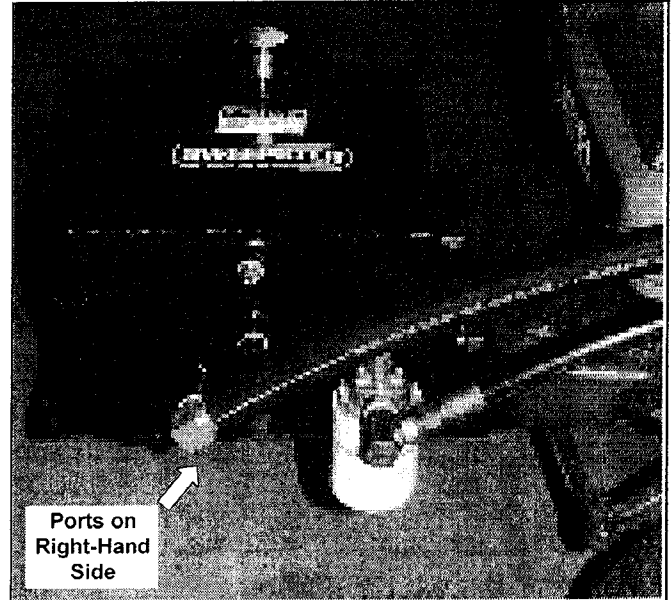


Figure 4

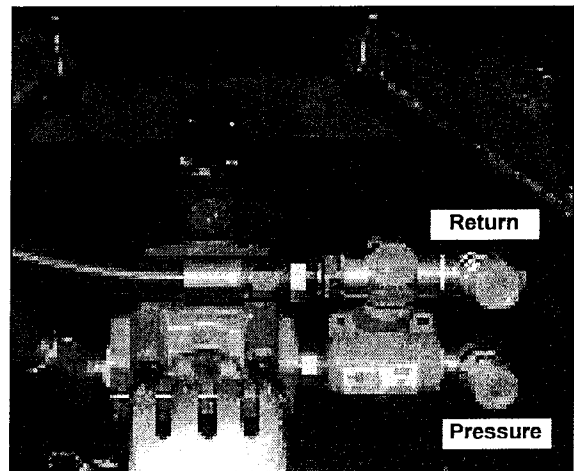


Figure 5



2800 North Zeeb Road • Dexter, Michigan 48130-9797  
734-996-9116 • 1-800-456-7100 • FAX (734) 996-9014

51-4146, 4/08

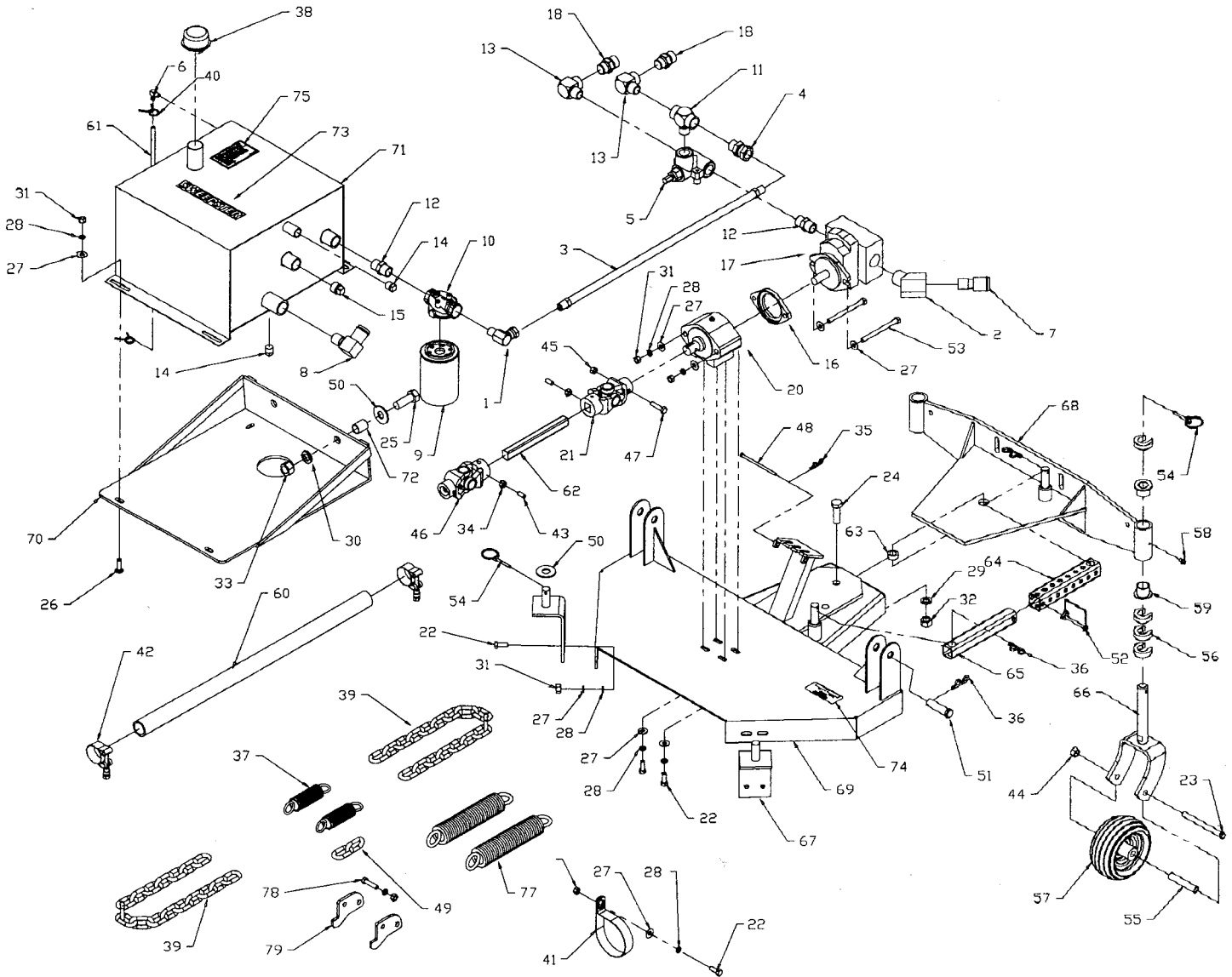
# PARTS LIST

Tractor Make: Kubota

Assembly: 11-17605

Tractor Models: F2880, F2880E, F3680

Sweeper: CTH



2800 North Zeeb Road • Dexter, Michigan 48130-9797  
734-996-9116 • 1-800-456-7100 • FAX (734) 996-9014

# PARTS LIST

**Tractor Make: Kubota**

**Assembly: 11-17605**

**Tractor Models: F2880, F2880E, F3680**

**Sweeper: CTH**

| Item | Part       | Qty | Description                              | Item | Part     | Qty     | Description                       |
|------|------------|-----|--|------|----------|---------|-----------------------------------|
| 1.   | 03-0016    | 1   | Fitting, Elbow, HP, 90, 3/4 MP, 3/4 FPS  | 40.  | 07-0551  | 2       | Clamp, Spring, 1/4 Hose           |
| 2    | 03-0032    | 1   | Fitting, St Elbow, HP, 45, 1 P           | 41.  | 07-1133  | 2       | Clamp, Hose, Rubber Coat, 3       |
| 3.   | 03-0038    | 1   | Hose, 3/4 x 120, 1W, 3/4 MP, 3/4 MP      | 42.  | 07-1192  | 2       | Clamp, T-Bolt, 1-1/4              |
| 4.   | 03-0039    | 1   | Fitting, Adapter, HP, 3/4 MP, 3/4 FPS    | 43.  | 07-1279  | 2       | Screw, Set, Gr5, 3/8-16 x 3/4     |
| 5.   | 03-0129    | 1   | Valve, Relief, 3/4 Ports                 | 44.  | 07-4037  | 2       | Nut, Hex, 1/2-13, Nylock          |
| 6.   | 03-0454    | 2   | Fitting, Barb, HP, 90, 1/4, 1/8 MP       | 45.  | 07-3270  | 1       | Nut, Hex, 5/16-18, Nylock         |
| 7.   | 03-0646    | 1   | Fitting, Barb, HP, 1-1/4, 1 MP           | 46.  | 07-1596  | 1       | U-Joint, H7, Rect, 10 Spline      |
| 8.   | 03-0711    | 1   | Fitting, Barb, HP, 90, 1-1/4, 1 MP       | 47.  | 07-1698  | 1       | Screw, HHC, Gr 8, 5/16-18 x 2     |
| 9.   | 03-0744    | 1   | Filter, Element, 25 m, Spin-On           | 48.  | 07-1709  | 1       | Pin, Clevis, 1/4 x 4-1/2          |
| 10.  | 03-0745    | 1   | Filter, Base, Spin-On                    | 49.  | 07-1759  | 1       | Chain, 3/16, 36 Links             |
| 11.  | 03-0992    | 1   | Fitting, Tee, HP, MB, 3/4 FP, 3/4 MP     | 50.  | 07-1782  | 4       | Washer, Flat, Gr 2, 3/4, 1-1/20 D |
| 12.  | 03-1022-10 | 2   | Fitting, Nipple, HP, Hex, 3/4 MP, 3/4 MP | 51.  | 07-1893  | 2       | Pin, Clevis, Gr 2, 3/4 x 2-1/2    |
| 13.  | 03-1039    | 2   | Fitting, St Elbow, HP, 90, 3/4           | 52.  | 07-2105  | 1       | Pin, Lock, 3/8, Square Bail       |
| 14.  | 03-1182-4  | 2   | Fitting, Plug, BP, Square, 1/2           | 53.  | 07-2488  | 2       | Screw, HHC, Gr 2, 3/8 x 4-1/2     |
| 15.  | 03-1182-5  | 1   | Fitting, Plug, BP, Hex, 3/4              | 54.  | 07-2843  | 4       | Pin, Klik, 3/16 x 1-5/8           |
| 16.  | 03-1334    | 1   | Spacer, A Flange                         | 55.  | 07-3013  | 2       | Bushing, Caster                   |
| 17.  | 03-1433    | 1   | Pump, Clock                              | 56.  | 07-3015  | 8       | Spacer, Caster                    |
| 18.  | 03-1943    | 2   | Fitting, Adapter, HP, 3/4 MFS, 3/4 MP    | 57.  | 07-4367  | 2       | Wheel, Caster                     |
| 20.  | 05-0802    | 1   | Block, Bearing, 1 Rd, St                 | 58.  | 07-3112  | 2       | Fitting, Zerk, 1/4-28, Self Tap   |
| 21.  | 05-0926    | 1   | U-Joint, H7, Rect, 1 Rd, St              | 59.  | 08-0131  | 4       | Bearing, Caster                   |
| 22.  | 07-0018    | 9   | Screw, Cap, 3/8-16 x 1                   | 60.  | 09-0020  | 10 ft   | Hose, Suction, 1-1/4              |
| 23.  | 07-3676    | 2   | Screw, Cap, 1/2-13 x 5                   | 61.  | 09-0054  | 1.54 ft | Tube, 3/8, 1/4, Sight Gage        |
| 24.  | 07-0066    | 1   | Screw, Cap, 5/8-11 x 2                   | 62.  | 11-1586  | 1       | Shaft, Rec, 8-1/2                 |
| 25.  | 07-1870    | 2   | Screw, Cap, 3/4-10 x 2                   | 63.  | 11-7479  | 1       | Bushing, 1 x 5/8 x 7/16           |
| 26.  | 07-1717    | 4   | Bolt, Carriage, 3/8-16 x 1-1/4           | 64.  | 13-4193  | 1       | Tube, Link, Out, Manual Angle     |
| 27.  | 07-3279    | 18  | Washer, Flat, 3/8                        | 65.  | 13-4194  | 1       | Tube, Link, In, Manual Angle      |
| 28.  | 07-1718    | 18  | Washer, Lock, Split, 3/8                 | 66.  | 13-4291  | 2       | Weld, Caster, Fork                |
| 29.  | 07-1872    | 1   | Washer, Lock, Split, 5/8                 | 67.  | 13-16125 | 2       | Weld, Mounting, Frame, Rear       |
| 30.  | 07-3065    | 2   | Washer, Lock, Split, 3/4                 | 68.  | 13-8019  | 1       | Weld, Plate, Swing for Casters    |
| 31.  | 07-3654    | 14  | Nut, Hex, 3/8-16                         | 69.  | 13-16733 | 1       | Weld, Frame, Mounting and Swing   |
| 32.  | 07-1294    | 1   | Nut, Hex, 5/8-11                         | 70.  | 13-8108  | 1       | Weld, Mounting, Tank              |
| 33.  | 07-3066    | 2   | Nut, Hex, 3/4-10                         | 71.  | 13-8113  | 1       | Weld, Tank, Hydraulic, CTH        |
| 34.  | 07-3272    | 2   | Nut, Hex, 3/8-16, Jam                    | 72.  | 13-8114  | 2       | Bushing, 1 x .781 x 1.125         |
| 35.  | 07-0209    | 1   | Clip, Hairpin, 16 Ga x 1-3/8             | 73.  | 50-0184  | 1       | Label, Small, White, SWEEPSTER    |
| 36.  | 07-0210    | 4   | Clip, Hairpin, 14 Ga x 1-3/4             | 74.  | 50-0249  | 1       | Label, Plate, Part Number/Date    |
| 37.  | 07-0237    | 2   | Spring, Tension, 1-13/32 x 6             | 75.  | 50-0272  | 1       | Label, Oil, ISO VG 46             |
| 38.  | 07-0245    | 1   | Cap, Breather, Hydraulic Tank            | 77.  | 07-0216  | 2       | Spring, Tension, 1.87 x 10.31     |
| 39.  | 07-0387    | 2   | Chain, 3/16, 26 Links                    | 78.  | 07-3655  | 2       | Screw, Cap, 3/8-16 x 1 1/2        |
|      |            |     |  | 79.  | 13-10989 | 2       | Plate, Mounting, Bracket, Right   |



2800 North Zeeb Road • Dexter, Michigan 48130-9797  
734-996-9116 • 1-800-456-7100 • FAX (734) 996-9014

51-4146, 4/08