

RS-16 ANCHOR DRIVE



SINGLE SPEED DRIVE UNIT | PN 623133

used for anchor installation



EXCAVATOR SIZE

8T - 20T

CONNECTIONS

HEX

2 1/2"

WEIGHT

LBS | 650

NOT RECOMMENDED
FOR DRILLING

TRULINK TORQUE PIN

RS-16 is outfitted to fit these
TruLink® Torque Monitor Systems.



TruLink 2.0 Class 1
with 7" Display
PN | 615070

Kits include Pin, Displays, Anti-Rotation Block,
Mount, Cable and Stylus.



HYDRAULIC MOTOR INFORMATION

Displacement	19 cu/in (310cc)
Motor Type	Single Speed Bi-Directional
Motor Output Shaft	1 1/2" Spline 17T
Motor Mount	SAE - C 4 Bolt
Motor Ports	1 1/16" - 12 O-Ring
Cross Over Pressure Relief	Set at 3100 PSI

PLANETARY GEARBOX INFORMATION

Gearbox Type	Planetary Two Stage
Reduction Ratio	17.39:1
Output Shaft	2 1/2" Hex
Internal Oil Capacity	2.0 Gallons
Oil Type	SAE 80W90 GL-5
Shaft Pull Out (lbs.)	22,500

The RS-16, Pengo's newest addition to the anchor drive product line, provides significant torque capability in a compact package. The addition of a standard counter-balance valve reduces the amount of anchor kick-back often encountered during installation. The RS-16 is the perfect choice for excavators between 8T and 20T and like all Pengo anchor drives, the RS-16 is overbuilt to perform.

RS-16 ANCHOR DRIVE

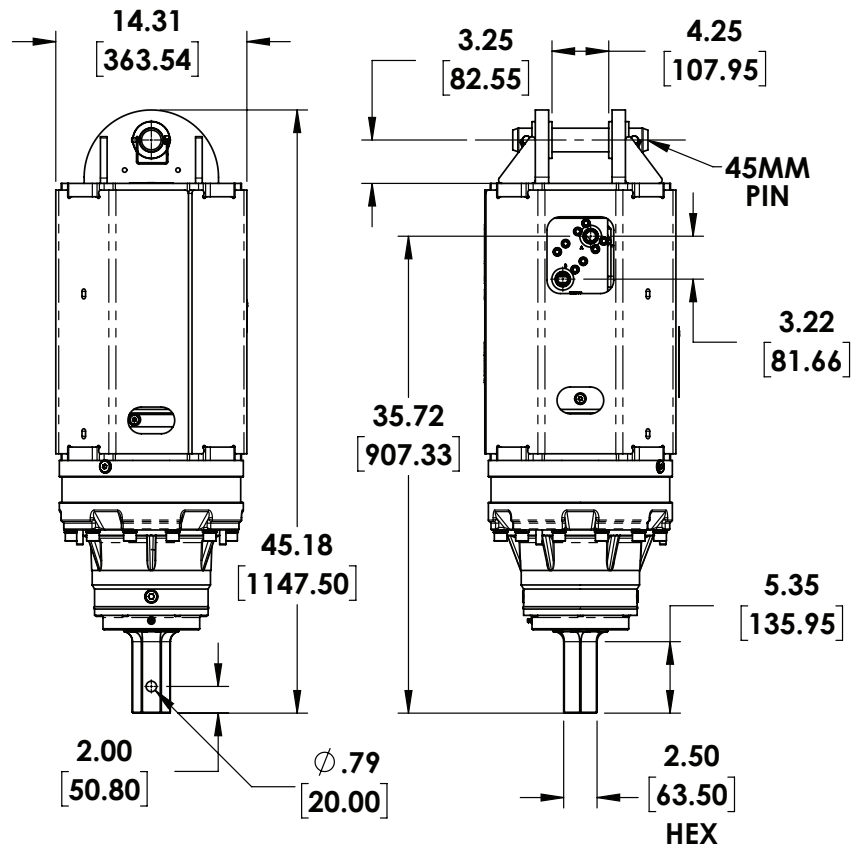
REFERENCE SPEED CHART

Flow GPM (Liter)	Speed (rpm)
15 (56)	7
20 (75)	9
25 (94)	12
30 (113)	14
35 (132)	16
40 (141)	19

REFERENCE TORQUE CHART

Pressure (psi)	THEORETICAL Torque (ft/lb)	ACTUAL Torque (ft/lb)
1000	6365	5347
1200	7638	6416
1400	8911	7485
1600	10185	8555
1800	11458	9625
2000	12731	10694
2200	14004	11763
2400	15277	12833
2600	16550	13902
2800	17823	14971
3000	19096	16041

Note that both theoretical and actual torque values are listed, but that Pengo recommends to go by ACTUAL torque listings.



45MM Link Arm

LBS | 46

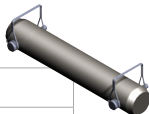
PN | 660555



45MM Pin

LBS | 7

PN | 660558



2 1/2" Hex Drive Tool

LBS | 28

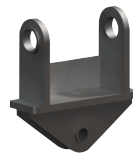
PN | 158132



MOUNTS for RS-16

Pengo offers a complete excavator mounting systems for the RS-16 unit. These mounts can be mounted directly to the stick or designed to work with an existing quick coupler.

End of Stick



Quick Coupler



Excavator Mounts allow for maximum movement to ensure the Drive always hangs true to the ground.

Custom mounts can be designed for specific applications.

Pengo lists output speeds at both theoretical and actual. Actual torque numbers are NOT listed at 100% efficiency. Maximum efficiencies have been applied to the torque and speed charts according to the manufacturer's recommendations. Speed and torque output are dependent on the overall system efficiencies associated with the prime movers hydraulic system. When the purchaser is determining criteria for specific applications please contact Pengo. Pengo has made every attempt to present accurate and suitable information published in this document. This document should be used for information and comparative purposes only. When application-specific information is required, please contact Pengo.