

## DRILLING | DT-5

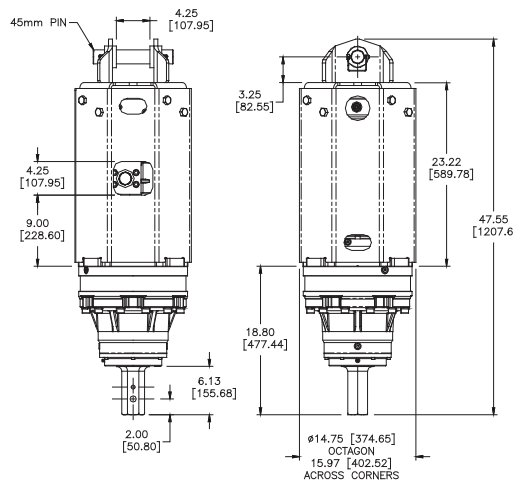
## FEATURES

- Highly Efficient Gearbox
- Two Speed
- Removable Top Section
- Transducer-Ready Ports; RevTrak Compatible

PART NO.	MODEL	CONNECTION	EXCAVATOR
610173	DT-5	H-250	5T-8T

## ACCESSORIES

661111	Universal Mounting Plate for Skid-Steer
610309	RevTrak™ Monitoring System
610314	DT-5 Drive with RevTrak Installed
660555	Link Arm 45mm
660558	Pin Assembly 45mm



<b>TOTAL UNIT WEIGHT</b>	645 LBS / 292 Kg
<b>HYDRAULIC MOTOR INFORMATION</b>	
Displacement	2.98 cu/in (97.6cc)
Motor Type	Two Speed Bi-Directional
Motor Output Shaft	1-1/4" Spline 14T
Motor Mount	SAE - C 4 Bolt
Motor Ports	1-5/8" - 12 UN-2B
Cross Over Pressure Relief	Set @ 3100 psi
<b>PLANETARY GEARBOX INFORMATION</b>	
Gearbox Type	Planetary Two Stage
Reduction Ratio	25.36:1
Output Shaft	2-1/2" Hex
Oil Capacity	1.7 Gallons
Oil Type	SAE 80W90 GL-5
Shaft Pull Out (lbs.)	22,500 lbs.

**TWO SPEED MODELS MUST HAVE A MINIMUM OF 20GPM.**

Output speed and torque specifications are NOT listed at 100% efficiency. Maximum efficiencies have been applied to the torque and speed charts according to the manufacturers recommendations. Speed and torque output are dependant on the overall system efficiencies associated with the prime movers hydraulic system. When the purchaser is determining criteria for specific applications please contact Pengo. Pengo has made every attempt to present accurate and suitable information published on this document. This document should be used for information and comparative purposed only. When application specific information is required, please contact Pengo.



# REVOLUTION



REFERENCE TORQUE CHART		
Pressure PSI (Bar)	High Torque (ft/lbs)	Low Torque (ft/lbs)
1600 (110)	2629	1314
1800 (124)	2958	1478
2000 (137)	3287	1643
2200 (151)	3615	1807
2400 (165)	3943	1971
2600 (179)	4272	2136
2800 (193)	4601	2300
3000 (206)	4930	2465

REFERENCE SPEED CHART		
Flow GPM (Liter)	Low Speed (rpm)	High Speed (rpm)
20 (75)	25	50
25 (95)	31	63
30 (113)	38	75
35 (132)	44	88
40 (151)	50	100