

DRILLING | DT-15

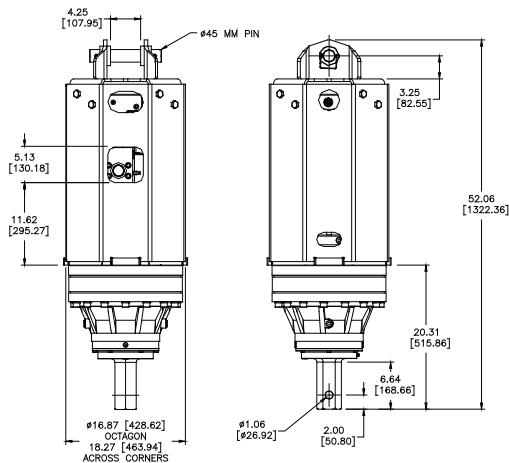
FEATURES

- Highly Efficient Gearbox
- Two Speed
- Removable Top Section
- Transducer-Ready Ports; RevTrak Compatible

PART NO.	MODEL	CONNECTION	EXCAVATOR
610174	DT-15	H-300	17T-25T

ACCESSORIES

610309	RevTrak™ Monitoring System
610315	DT-15 Drive with RevTrak Installed
660555	Link Arm 45mm
660558	Pin Assembly 45mm



TOTAL UNIT WEIGHT	825 LBS / 374 Kg
HYDRAULIC MOTOR INFORMATION	
Displacement	17.8 cu/in (293cc)
Motor Type	Two Speed Bi-Directional
Motor Output Shaft	1-1/4" Spline 14T
Motor Mount	SAE - C 4 Bolt
Motor Ports	1-5/8" - 12 UN-2B
Cross Over Pressure Relief	Set @ 3100 psi
PLANETARY GEARBOX INFORMATION	
Gearbox Type	Planetary Two Stage
Reduction Ratio	26.52:1
Output Shaft	3" Hex
Oil Capacity	2.4 Gallons
Oil Type	SAE 80W90 GL-5
Shaft Pull Out (lbs.)	22,500 lbs.

TWO SPEED MODELS MUST HAVE A MINIMUM OF 20GPM.



REVOLUTION

**AUTO
SHIFT**

REFERENCE TORQUE CHART		
Pressure PSI (Bar)	High Torque (ft/lbs)	Low Torque (ft/lbs)
1600 (110)	8254	4127
1800 (124)	9287	4643
2000 (137)	10318	5159
2200 (151)	11350	5674
2400 (165)	12382	6191
2600 (179)	13414	6707
2800 (193)	14445	7223
3000 (206)	15478	7738

REFERENCE SPEED CHART		
Flow GPM (Liter)	Low Speed (rpm)	High Speed (rpm)
20 (75)	8	16
30 (113)	12	24
40 (151)	16	32
50 (190)	20	40

Output speed and torque specifications are NOT listed at 100% efficiency. Maximum efficiencies have been applied to the torque and speed charts according to the manufacturers recommendations. Speed and torque output are dependant on the overall system efficiencies associated with the prime movers hydraulic system. When the purchaser is determining criteria for specific applications please contact Pengo. Pengo has made every attempt to present accurate and suitable information published on this document. This document should be used for information and comparative purposes only. When application specific information is required, please contact Pengo.