

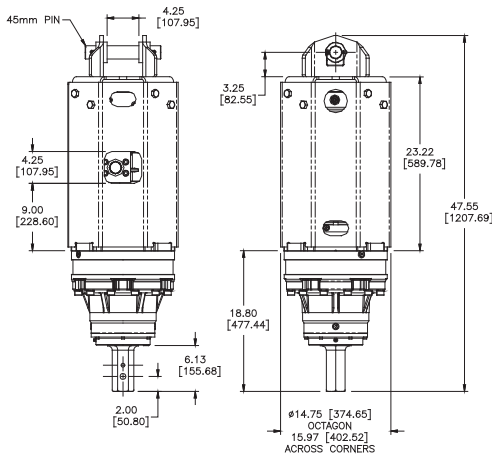


The RT-9 Anchor drive is perfect for the small anchor installation and drilling projects. The auto shift feature allows the drive to automatically shift between high speed and low torque and low speed high torque depending on the input flow. If drilling select the Pengo TriMax® or MD auger. *Note that both theoretical and actual torque values are listed, but that PENG0 recommends to go by ACTUAL torque listings.*

EXCAVATOR
SIZE: 3T-6T
MAX HOLE
SIZE: 5' (60")
MAX HOLE
DEPTH: 8' (96")

2 1/2" HEX CONNECTION

Part No. 610058 4T-8T Excavator 540 lbs. (245 Kg)



The standard cross-over pressure relief system is designed to protect the motor from pressure spikes and potential overload conditions.

**Two-Speed Models
Must Have
Minimum of 20 GPM**



HYDRAULIC MOTOR INFORMATION

Displacement	11.9 cu/in (195cc)
Motor Type	Two Speed Bi-Directional
Motor Output Shaft	1 1/4" Spline 14T
Motor Mount	SAE - C 4 Bolt
Motor Ports	1 5/8" - 12-UN-2B
Cross Over Pressure Relief	Set at 3100 psi

REFERENCE SPEED CHART

Flow GPM (Liter)	Low (rpm)	High (rpm)
20 (75)	13	25
30 (113)	19	38
40 (151)	25	50
50 (190)	31	63

PLANETARY GEARBOX INFORMATION

Gearbox Type	Planetary Two Stage
Reduction Ratio	25.36:1
Output Shaft	2 1/2" Hex
Internal Oil Capacity	2.0 Gallons
Oil Type	SAE 80W90 GL-5
Shaft Pull Out (lbs.)	22,500 lbs.

Note: Revolution Drive units are not recommended for DTH and will not be covered under warranty for damage due to down the hole drilling.

BELOW CHART FOR LOW TORQUE/HIGH SPEED OUTPUT

REFERENCE TORQUE CHART (LT / HS)

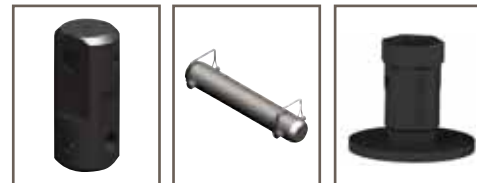
Pressure (psi)	THEORETICAL Torque (ft/lb)	ACTUAL Torque (ft/lb)
1000	2002	1642
1200	2402	1970
1400	2802	2298
1600	3203	2626
1800	3603	2954
2000	4004	3283
2200	4404	3611
2400	4805	3940
2600	5205	4268
2800	5605	4596
3000	6006	4925

BELOW CHART FOR HIGH TORQUE/LOW SPEED OUTPUT

REFERENCE TORQUE CHART (HT / LS)

Pressure (psi)	THEORETICAL Torque (ft/lb)	ACTUAL Torque (ft/lb)
1000	4004	3283
1200	4805	3940
1400	5605	4596
1600	6406	5253
1800	7207	5910
2000	8008	6567
2200	8809	7223
2400	9610	7880
2600	10410	8536
2800	11211	9193
3000	12012	9850

ACCESSORIES:



45mm Link Arm
660555
47 lbs.

45mm Pin Assembly
660558
7 lbs.

2 1/2" Hex Drive Tool
158132
27.6 lbs.



TruLink Class 1
with 4" Monitor Part No. 615000
with 8" Monitor Part No. 615002



CARRIER GUIDE:



Pengo lists output speeds at both theoretical and actual. Actual torque numbers are NOT listed at 100% efficiency. Maximum efficiencies have been applied to the torque and speed charts according to the manufacturer's recommendations. Speed and torque output are dependent on the overall system efficiencies associated with the prime movers hydraulic system. When the purchaser is determining criteria for specific applications please contact Pengo. Pengo has made every attempt to present accurate and suitable information published in this document. This document should be used for information and comparative purposes only. When application-specific information is required, please contact Pengo.

Images not to scale.