

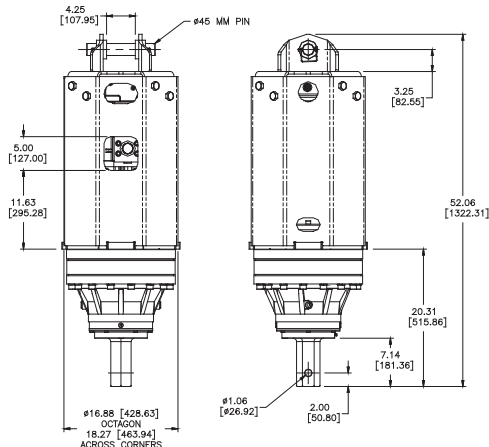


When the job calls for larger anchor installation using a backhoe or excavator turn to the RT. The auto shift feature allows the drive to automatically shift between high speed and low torque and low speed high torque depending on the input flow. *Note that both theoretical and actual torque values are listed, but that PENGU recommends to go by ACTUAL torque listings.*

**EXCAVATOR SIZE: 12T-20T**  
Not Recommended for Drilling.

**3" HEX CONNECTION**

Part No. 610060 12T-20T Excavator 855 lbs. (387 Kg)



The standard cross-over pressure relief system is designed to protect the motor from pressure spikes and potential overload conditions.

**Two-Speed Models Must Have Minimum of 20 GPM**



pengoattachments.com | 800.599.0211

**HYDRAULIC MOTOR INFORMATION**

Displacement	11.9 cu/in (195cc)
Motor Type	Two Speed Bi-Directional
Motor Output Shaft	1 1/4" Spline 14T
Motor Mount	SAE - C 4 Bolt
Motor Ports	1 5/8" - 12-UN-2B
Cross Over Pressure Relief	Set at 3100 psi

**REFERENCE SPEED CHART**

Flow GPM (Liter)	Low (rpm)	High (rpm)
20 (75)	5	10
30 (113)	8	15
40 (151)	10	20
50 (190)	13	25

**PLANETARY GEARBOX INFORMATION**

Gearbox Type	Planetary Three Stage
Reduction Ratio	60.56:1
Output Shaft	3" Hex
Internal Oil Capacity	3.0 Gallons
Oil Type	SAE 80W90 GL-5
Shaft Pull Out (lbs.)	45,000 lbs.

Note: Revolution Drive units are not recommended for DTH and will not be covered under warranty for damage due to down the hole drilling.

**BELOW CHART FOR LOW TORQUE/HIGH SPEED OUTPUT**

**REFERENCE TORQUE CHART (LT / HS)**

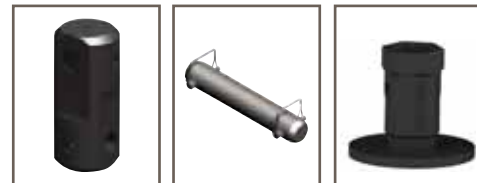
Pressure (psi)	THEORETICAL Torque (ft/lb)	ACTUAL Torque (ft/lb)
1000	4781	3777
1200	5737	4532
1400	6693	5287
1600	7649	6043
1800	8605	6798
2000	9562	7554
2200	10518	8309
2400	11474	9064
2600	12430	9820
2800	13386	10575
3000	14343	11331

**BELOW CHART FOR HIGH TORQUE/LOW SPEED OUTPUT**

**REFERENCE TORQUE CHART (HT / LS)**

Pressure (psi)	THEORETICAL Torque (ft/lb)	ACTUAL Torque (ft/lb)
1000	9562	7554
1200	11474	9064
1400	13386	10575
1600	15299	12086
1800	17211	13597
2000	19124	15108
2200	21036	16618
2400	22948	18129
2600	24861	19640
2800	26773	21151
3000	28686	22662

**ACCESSORIES:**



**45mm Link Arm**  
660555  
47 lbs.

**45mm Pin Assembly**  
660558  
7 lbs.

**2 1/2" Hex Drive Tool**  
158132  
27.6 lbs.



**TruLink Class 1**  
with 4" Monitor Part No. 615000  
with 8" Monitor Part No. 615002



ANCHOR DRIVES

**CARRIER GUIDE:**



Pengo lists output speeds at both theoretical and actual. Actual torque numbers are NOT listed at 100% efficiency. Maximum efficiencies have been applied to the torque and speed charts according to the manufacturer's recommendations. Speed and torque output are dependent on the overall system efficiencies associated with the prime movers hydraulic system. When the purchaser is determining criteria for specific applications please contact Pengo. Pengo has made every attempt to present accurate and suitable information published in this document. This document should be used for information and comparative purposes only. When application-specific information is required, please contact Pengo.

Images not to scale.