



RT-12



pengoattachments.com | 800.599.0211

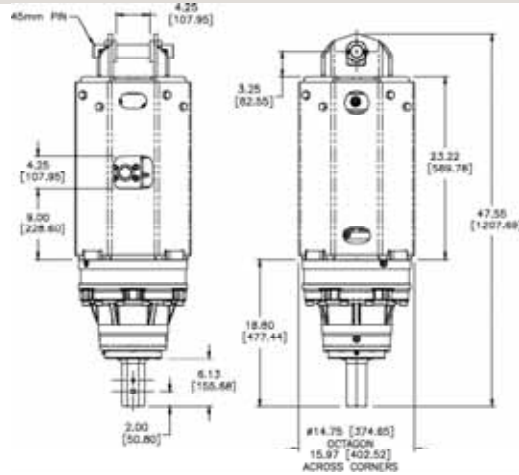


The RT-12 Anchor drive is perfect anchor installation projects when using a skid steer, mini-ex or backhoe. This drive may also be used for some drilling applications with the Pengo MD or Excavator auger system. *Note that both theoretical and actual torque values are listed, but that PENGO recommends to go by ACTUAL torque listings.*

EXCAVATOR
SIZE: 6T-12T
MAX HOLE
SIZE: 5' (60")
MAX HOLE
DEPTH: 10' (120")

2 1/2" HEX CONNECTION

Part No. 610059 6T-12T Excavator 655 lbs. (297 Kg)



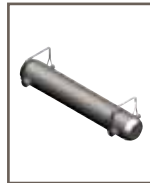
The standard cross-over pressure relief system is designed to protect the motor from pressure spikes and potential overload conditions.

Two-Speed Models Must Have Minimum of 20 GPM

ACCESSORIES:



45mm Link Arm
660555
47 lbs.



45mm Pin Assembly
660558
7 lbs.



2 1/2" Hex Drive Tool
158132
27.6 lbs.



TruLink Class 1
with 4" Monitor Part No. 615000
with 8" Monitor Part No. 615002



HYDRAULIC MOTOR INFORMATION

Displacement	14.9 cu/in (244cc)
Motor Type	Two Speed Bi-Directional
Motor Output Shaft	1 1/4" Spline 14T
Motor Mount	SAE - C 4 Bolt
Motor Ports	1 5/8" - 12 UN-2B
Cross Over Pressure Relief	Set at 3100 psi

REFERENCE SPEED CHART

Flow GPM (Liter)	Low (rpm)	High (rpm)
20 (75)	10	21
30 (113)	15	32
40 (151)	20	43
50 (190)	25	54

PLANETARY GEARBOX INFORMATION

Gearbox Type	Planetary Two Stage
Reduction Ratio	25.36:1
Output Shaft	2 1/2" Hex
Internal Oil Capacity	2.0 Gallons
Oil Type	SAE 80W90 GL-5
Shaft Pull Out (lbs.)	22,500 lbs.

Note: Revolution Drive units are not recommended for DTH and will not be covered under warranty for damage due to down the hole drilling.

BELOW CHART FOR LOW TORQUE/HIGH SPEED OUTPUT

REFERENCE TORQUE CHART (LT / HS)

Pressure (psi)	THEORETICAL Torque (ft/lb)	ACTUAL Torque (ft/lb)
1000	2338	1917
1200	2806	2301
1400	3274	2685
1600	3742	3068
1800	4209	3451
2000	4677	3835
2200	5145	4219
2400	5613	4603
2600	6081	4986
2800	6548	5369
3000	7016	5753

BELOW CHART FOR HIGH TORQUE/LOW SPEED OUTPUT

REFERENCE TORQUE CHART (HT / LS)

Pressure (psi)	THEORETICAL Torque (ft/lb)	ACTUAL Torque (ft/lb)
1000	5012	4110
1200	6014	4931
1400	7017	5754
1600	8019	6576
1800	9022	7398
2000	10024	8220
2200	11027	9042
2400	12029	9864
2600	13032	10686
2800	14034	11508
3000	15037	12330

ANCHOR DRIVES

CARRIER GUIDE:



Pengo lists output speeds at both theoretical and actual. Actual torque numbers are NOT listed at 100% efficiency. Maximum efficiencies have been applied to the torque and speed charts according to the manufacturer's recommendations. Speed and torque output are dependent on the overall system efficiencies associated with the prime movers hydraulic system. When the purchaser is determining criteria for specific applications please contact Pengo. Pengo has made every attempt to present accurate and suitable information published in this document. This document should be used for information and comparative purposes only. When application-specific information is required, please contact Pengo.

Images not to scale.