



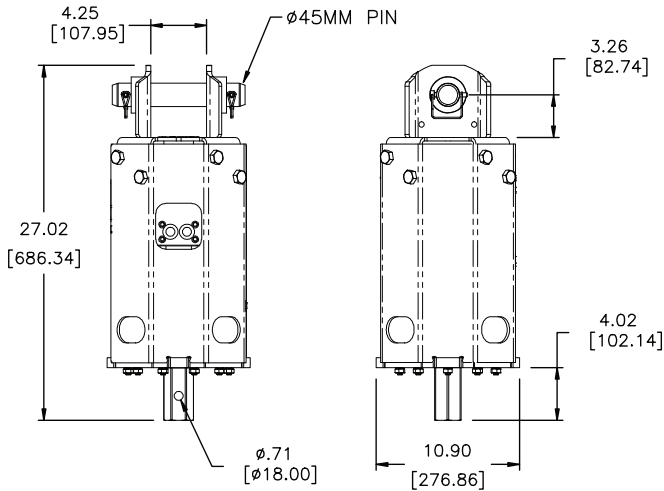
The RS-6 Anchor Drive is similar to the RX-6 but includes the bail housing. The RS-6 drives will attach to your skid steer or mini-excavator and it offers the shortest overall length and smallest diameter for drilling. The RS-6 will allow your prime mover access to the tight spaces. *Note that both theoretical and actual torque values are listed, but that PENGU recommends to go by ACTUAL torque listings.*

EXCAVATOR SIZE: 3T-6T
Not recommended for Drilling.

2" HEX CONNECTION

Part No. 610658

3T-6T Excavator 103 lbs. (47 Kg)



DARE TO COMPARE!

THE DRIVE YOU NEED TO GET THE JOB DONE!

HYDRAULIC MOTOR INFORMATION

Displacement	18.7 cu/in (306cc)
Motor Type	Single Speed Bi-Directional
Motor Output Shaft	1" 6B Spline
Motor Mount	SAE - A 2 Bolt
Motor Ports	3/4" -16 O-Ring
Cross Over Pressure Relief	Set at 2700 PSI

REFERENCE SPEED CHART

Flow GPM (Liter)	Speed (rpm)
10 (38)	9
15 (56)	14
20 (75)	19
25 (94)	23

PLANETARY GEARBOX INFORMATION

Gearbox Type	Planetary Two Stage
Reduction Ratio	13.29:1
Output Shaft	2" Hex
Internal Oil Capacity	.50 Gallons
Oil Type	SAE 80W90 GL-5
Shaft Pull Out (lbs.)	3,000 lbs.

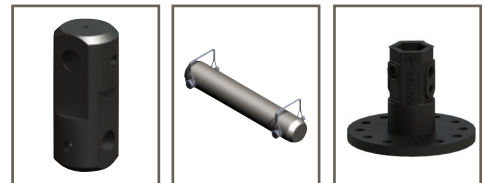
Note: Revolution Drive units are not recommended for DTH and will not be covered under warranty for damage due to down the hole drilling.

REFERENCE TORQUE CHART

Pressure (psi)	THEORETICAL Torque (ft/lb)	ACTUAL Torque (ft/lb)
1000	3292	2699
1300	4280	3510
1500	4939	4050
1700	5597	4590
1900	6256	5130
2100	6915	5670
2300	7573	6210
2500	8232	6750

- RS-6 Anchor Drive**
- ✓ For Hand-Held Anchor Installation
 - ✓ Shortest Overall Length & Smallest Unit Diameter
 - ✓ Fastest RPM
 - ✓ Higher GPM Capacity
 - ✓ Cross-Over Pressure Relief is Standard
 - ✓ Highest Torque Output
 - ✓ Tru Link™ Compatible

ACCESSORIES:



45mm Link Arm
660555
47 lbs.

45mm Pin Assembly
660558
7 lbs.

2" Hex Drive Tool
158136
20.21 lbs.



TruLink Class 1
with 4" Monitor Part No. 615000
with 8" Monitor Part No. 615002



CARRIER GUIDE:



Pengo lists output speeds at both theoretical and actual. Actual torque numbers are NOT listed at 100% efficiency. Maximum efficiencies have been applied to the torque and speed charts according to the manufacturer's recommendations. Speed and torque output are dependent on the overall system efficiencies associated with the prime movers hydraulic system. When the purchaser is determining criteria for specific applications please contact Pengo. Pengo has made every attempt to present accurate and suitable information published in this document. This document should be used for information and comparative purposes only. When application-specific information is required, please contact Pengo.

Images not to scale.