

### HDC STYLE AUGER WEAR PARTS LIST

AUGER DIA.	6"	8"	9"	10"	12"	15"	16"	18"	20"	24"	30"	36"	42"	48"
	152mm	203mm	229mm	254mm	305mm	381mm	406mm	457mm	508mm	610mm	762mm	914mm	1067mm	1219mm
Part #	Description(Standard Components)	Qty	Qty	Qty	Qty	Qty	Qty	Qty	Qty	Qty	Qty	Qty	Qty	Qty
22169	Hardened Drive-In Gage Tooth	2	2	2	2	2	2	2	2	2	2	2	2	2
22168	Hardened Drive-In Wisdom Tooth	-	2	2	2	4	4	4	4	6	8	10	14	18
22190	3.50" Hardened Fishtail Point (male shaft)	1	1	1	1	1	1	1	1	1	1	1	1	1
22154	Rubber Lock	2	4	4	4	6	6	6	6	8	10	12	16	20

### HDF STYLE AUGER WEAR PARTS LIST

AUGER DIA.	4"	6"	8"	9"	10"	12"	15"	16"	18"	20"	24"	30"	36"
	102mm	152mm	203mm	229mm	254mm	305mm	381mm	406mm	457mm	508mm	610mm	762mm	914mm
Part #	Description(Standard Components)	Qty	Qty	Qty	Qty	Qty	Qty	Qty	Qty	Qty	Qty	Qty	Qty
22169	Hardened Bolt-on Gage Tooth	-	2	2	2	2	2	2	2	2	2	2	2
22168	Hardened Bolt-on Wisdom Tooth	-	-	-	1	1	2	3	3	4	6	7	9
22190	3.50" Hardened Fishtail Point (male shaft)	-	1	1	1	1	1	1	1	1	1	1	1
22003	4.50" Hardened Fishtail Point	1	-	-	-	-	-	-	-	-	-	-	-
22306	Carriage Bolt	-	2	2	3	3	4	5	5	6	8	9	11
1839	Nut	-	2	2	3	3	4	5	5	6	8	9	11

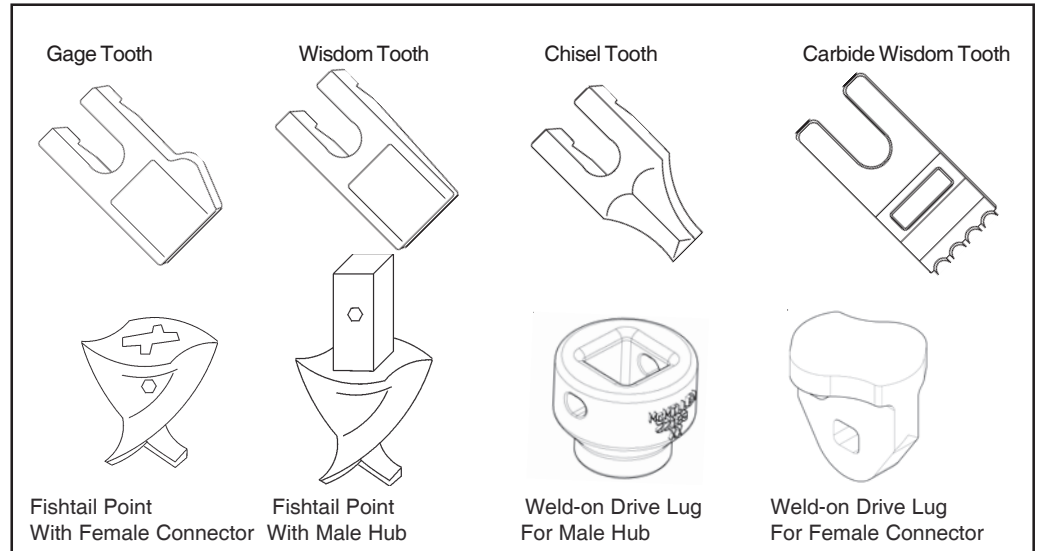
### HTF STYLE AUGER WEAR PARTS LIST

AUGER DIA.	18"	24"	30"	36"	42"	48"
	457mm	610mm	762mm	914mm	1067mm	1219mm
Part #	Description(Standard Components)	QTY	QTY	QTY	QTY	QTY
22169	Hardened Bolt-on Gage Tooth	4	4	4	4	4
22168	Hardened Bolt-on Wisdom Tooth	3	6	7	9	11
22190	3.50" Hardened Fishtail Point (male shaft)	1	1	1	1	1
22306	Carriage Bolt	7	10	11	13	15
1839	Nut	7	10	11	13	15

### OPTIONAL HARDFACED & CARBIDE WEAR COMPONENTS

Part #	Description
22170	Hardfaced Wisdom Tooth
22186	Carbide Wisdom Tooth
22181	Hardened Chisel Tooth
22183	Hardfaced Chisel Tooth
22182	Carbide Chisel Tooth
22190	3.50" Hardened Fishtail Point (Male Hub)
22192	3.50" Hardfaced Fishtail Point (Male Hub)
22191	3.50" Carbide Fishtail Point (Male Hub)
22193	3.50" Hardfaced /Carbide Fishtail Point (Male Hub)
22003	4.50" Hardened Fishtail Point (Female)
22004	4.50" Hardfaced Fishtail Point (Female)
22005	4.50" Hardfaced /Carbide Fishtail Point (Female)
22171	3.50" Hardened Fishtail Point (Female)
22172	3.50" Carbide Fishtail Point (Female)
22173	3.50" Hardfaced Fishtail Point (Female)
22174	3.50" Hardfaced /Carbide Fishtail Point (Female)

**IMPORTANT:** *McMillen does not recommend augers exceeding 36" diameter for C-Series Drive Units.*



**NOTE:** *Contact your equipment dealer for wear components not listed above. If you have any special auger needs or applications, feel free to contact McMillen.*