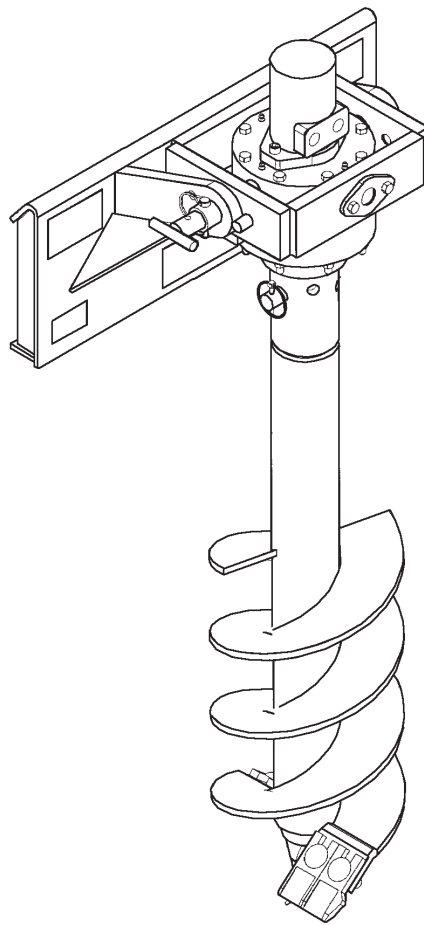




OPERATOR'S & PARTS MANUAL

X900 High Speed Auger Drive X1500 High Torque Auger Drive



SERIAL NUMBER: _____

MODEL NUMBER: _____

Manual Number: 24772

Date: May, 2005



PALADIN
LIGHT CONSTRUCTION GROUP

 **BRADCO**

 **FFC**

 **HARLEY**

 **McMILLEN**

 **SWEEPSTER**

The Power of Combined Excellence

TO THE OWNER

GENERAL COMMENTS

Congratulations on the purchase of your new McMillen Earth Auger Attachment. Your earth auger was carefully designed and manufactured to give you many years of dependable service. Your earth auger will require some minor maintenance (such as cleaning and lubricating) to keep it in top working condition. Be sure to observe all maintenance procedures and safety precautions in this manual, on the safety decals located on the attachment, and on any equipment on which the earth auger is mounted.

ABOUT THIS MANUAL

This manual has been designed to help you to do a better, safer job. Read this manual carefully, and become familiar with the operating procedures before attempting to operate your earth auger. Remember, never let anyone operate this earth auger without them having read and completely understand the "Safety Precaution" and "Operating Instructions" sections of this manual, or having them be fully trained by an experienced, qualified person who has read and completely understands the "Safety Precautions" and Operating Instructions".

After reading this manual, if you have any questions about your attachment please contact us immediately as follows:

NORTH AMERICAN TOLL FREE: (800) 922-2981
Outside North America: (563) 922-2981
Fax: (563) 922-2700

SERVICE

When servicing this product, remember to use only manufacturer replacement parts. Substitute parts may not meet the standards required for safe, dependable operation.

To facilitate parts ordering, record the model and serial number of your unit in the space provided on this page. This information may be obtained from the identification plate located on the product.

MODEL: _____

SERIAL NO. _____

McMILLEN®

P.O. Box 266 • Delhi, Iowa 52223 • Phone (563) 922-2981 • Fax (563) 922-2700
North American Toll Free (800) 922-2981

M-102 4-18-05-4

SAFETY STATEMENTS



THIS SYMBOL BY ITSELF OR WITH A WARNING WORD THROUGHOUT THIS MANUAL IS USED TO CALL YOUR ATTENTION TO INSTRUCTIONS INVOLVING YOUR PERSONAL SAFETY OR THE SAFETY OF OTHERS. FAILURE TO FOLLOW THESE INSTRUCTIONS CAN RESULT IN INJURY OR DEATH.



DANGER

THIS SIGNAL WORD IS USED WHERE SERIOUS INJURY OR DEATH WILL RESULT IF THE INSTRUCTIONS ARE NOT FOLLOWED PROPERLY.



WARNING

THIS SIGNAL WORD IS USED WHERE SERIOUS INJURY OR DEATH COULD RESULT IF THE INSTRUCTIONS ARE NOT FOLLOWED PROPERLY.



CAUTION

THIS SIGNAL WORD IS USED WHERE MINOR INJURY COULD RESULT IF THE INSTRUCTIONS ARE NOT FOLLOWED PROPERLY.

NOTICE

NOTICE INDICATES A PROPERTY DAMAGE MESSAGE.

GENERAL SAFETY PRECAUTIONS

WARNING!



READ MANUAL PRIOR TO INSTALLATION

Improper installation, operation, or maintenance of this equipment could result in serious injury or death. Operators and maintenance personnel should read this manual, as well as all manuals related to this equipment and the prime mover thoroughly before beginning installation, operation, or maintenance. **FOLLOW ALL SAFETY INSTRUCTIONS IN THIS MANUAL AND THE PRIME MOVER'S MANUAL(S).**



READ AND UNDERSTAND ALL SAFETY STATEMENTS

Read all safety decals and safety statements in all manuals prior to operating or working on this equipment. Know and obey all OSHA regulations, local laws, and other professional guidelines for your operation. Know and follow good work practices when assembling, maintaining, repairing, mounting, removing, or operating this equipment.



KNOW YOUR EQUIPMENT

Know your equipment's capabilities, dimensions, and operations before operating. Visually inspect your equipment before you start, and never operate equipment that is not in proper working order with all safety devices intact. Check all hardware to ensure it is tight. Make certain that all locking pins, latches, and connection devices are properly installed and secured. Remove and replace any damaged, fatigued, or excessively worn parts. Make certain all safety decals are in place and are legible. Keep decals clean, and replace them if they become worn or hard to read.

M-806 7-28-05-2

GENERAL SAFETY PRECAUTIONS - CONTINUED

WARNING!



PROTECT AGAINST FLYING DEBRIS

Always wear proper safety glasses, goggles, or a face shield when driving pins in or out, or when any operation causes dust, flying debris, or any other hazardous material.

WARNING!



LOWER OR SUPPORT RAISED EQUIPMENT

Do not work under raised booms without supporting them. Do not use support material made of concrete blocks, logs, buckets, barrels, or any other material that could suddenly collapse or shift positions. Make sure support material is solid, not decayed, warped, twisted, or tapered. Lower booms to ground level or on blocks. Lower booms and attachments to the ground before leaving the cab or operator's station.

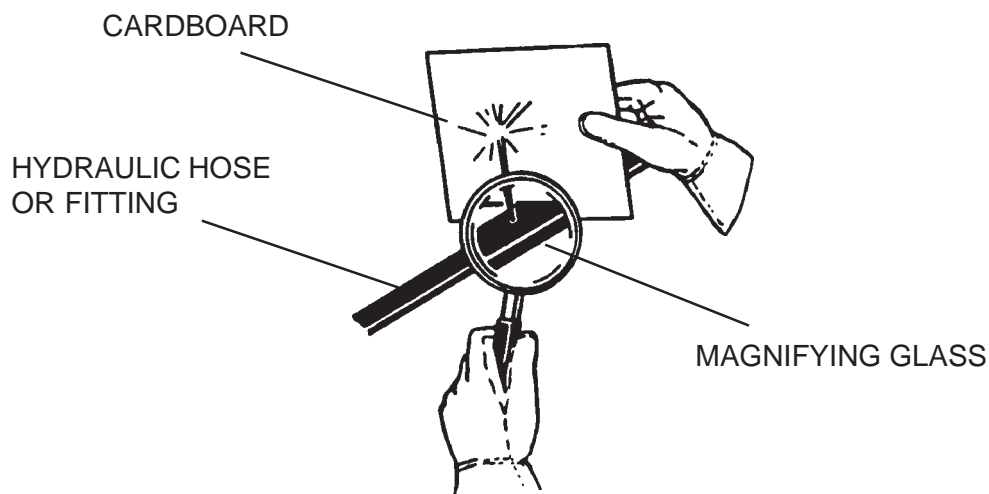
WARNING!



USE CARE WITH HYDRAULIC FLUID PRESSURE

Hydraulic fluid under pressure can penetrate the skin and cause serious injury or death. Hydraulic leaks under pressure may not be visible. Before connecting or disconnecting hydraulic hoses, read your prime mover's operator's manual for detailed instructions on connecting and disconnecting hydraulic hoses or fittings.

- Keep unprotected body parts, such as face, eyes, and arms as far away as possible from a suspected leak. Flesh injected with hydraulic fluid may develop gangrene or other permanent disabilities.
- If injured by injected fluid, see a doctor at once. If your doctor is not familiar with this type of injury, ask him to research it immediately to determine proper treatment.
- Wear safety glasses, protective clothing, and use a piece of cardboard or wood when searching for hydraulic leaks. **DO NOT USE YOUR HANDS! SEE ILLUSTRATION.**



GENERAL SAFETY PRECAUTIONS - CONTINUED

WARNING!



DO NOT MODIFY MACHINE OR ATTACHMENTS

Modifications may weaken the integrity of the attachment and may impair the function, safety, life, and performance of the attachment. When making repairs, use only the manufacturer's genuine parts, following authorized instructions. Other parts may be substandard in fit and quality. Never modify any ROPS (Roll Over Protection Structure) or FOPS (Falling Object Protective Structure) equipment or device. Any modifications must be authorized in writing by the manufacturer.

WARNING!



SAFELY MAINTAIN AND REPAIR EQUIPMENT

- Do not wear loose clothing or any accessories that can catch in moving parts. If you have long hair, cover or secure it so that it does not become entangled in the equipment.
- Work on a level surface in a well-lit area.
- Use properly grounded electrical outlets and tools.
- Use the correct tools for the job at hand. Make sure they are in good condition for the task required.
- Wear the protective equipment specified by the tool manufacturer.



SAFELY OPERATE EQUIPMENT

Do not operate equipment until you are completely trained by a qualified operator in how to use the controls, know its capabilities, dimensions, and all safety requirements. See your machine's manual for these instructions.

- Keep all step plates, grab bars, pedals, and controls free of dirt, grease, debris, and oil.
- Never allow anyone to be around the equipment when it is operating.
- Do not allow riders on the attachment or the prime mover.
- Do not operate the equipment from anywhere other than the correct operator's position.
- Never leave equipment unattended with the engine running, or with this attachment in a raised position.
- Do not alter or remove any safety feature from the prime mover or this attachment.
- Know your work site safety rules as well as traffic rules and flow. When in doubt on any safety issue, contact your supervisor or safety coordinator for an explanation.

EQUIPMENT SAFETY PRECAUTIONS

WARNING! KNOW WHERE UTILITIES ARE



Observe overhead electrical and other utility lines. Be sure equipment will clear them. When digging, call your local utilities for location of buried utility lines, gas, water, and sewer, as well as any other hazard you may encounter.



OPERATING THE PRIME MOVER

Avoid steep hillside operation, which could cause the prime mover to overturn. Consult your prime mover operator's and safety manuals for maximum incline allowable.



EXPOSURE TO RESPIRABLE CRYSTALLINE SILICA DUST ALONG WITH OTHER HAZARDOUS DUSTS MAY CAUSE SERIOUS OR FATAL RESPIRATORY DISEASE.

It is recommended to use dust suppression, dust collection and if necessary, personal protective equipment during the operation of any attachment that may cause high levels of dust.



WORKING WITH THE AUGER

- All bystanders should be kept a minimum of 10 feet (3 meters) away from the working area of the earth auger.
- An operator must not use drugs or alcohol, which can change his or her alertness or coordination. An operator taking prescription or over-the-counter drugs should seek medical advice on whether or not he or she can safely operate equipment.
- Before exiting the prime mover, lower the earth auger to the ground, turn off the prime mover's engine, and lock the prime mover's brakes.
- Flow and pressure gauges, fittings, and hoses must have a continuous operating pressure rating of at least 25% higher than highest pressures of the system.



TRANSPORTING THE AUGER

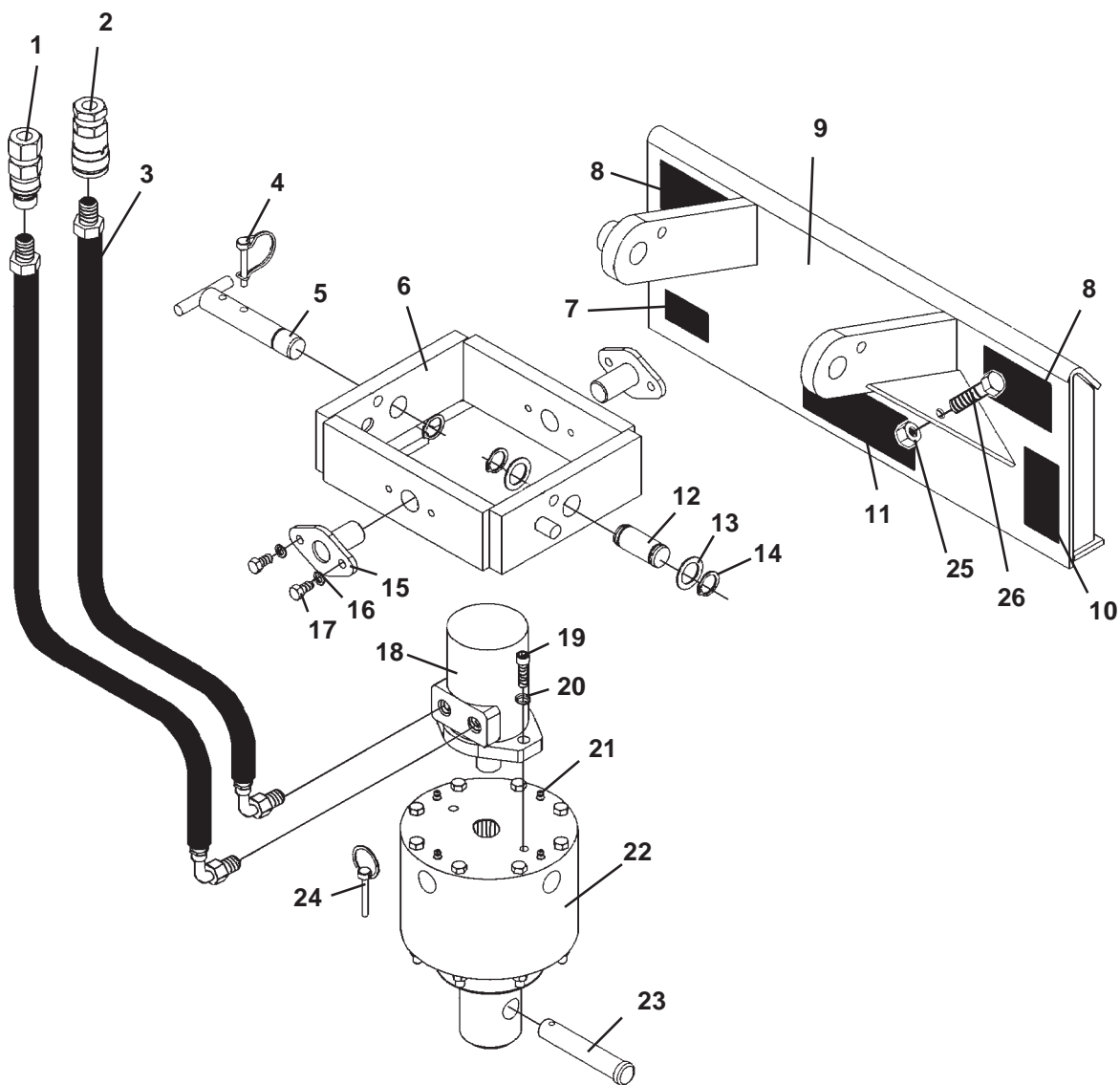
- Travel only with the earth auger in a safe transport position to prevent uncontrolled movement. Drive slowly over rough ground and on slopes.
- Tether the earth auger with a chain, if necessary, to prevent uncontrolled swinging of the auger when moving from hole to hole.
- Remove the earth auger from the prime mover before transporting to and from the job site.



MAINTAINING THE AUGER

- Never adjust a relief valve for pressure higher than recommended by the prime mover manufacturer.
- Never perform any work on an earth auger unless you are authorized and qualified to do so. Always read the operator service manual(s) before any repair is made. After completing maintenance or repair, check for correct functioning of the earth auger. If not functioning properly, always tag "DO NOT OPERATE" until all problems are corrected.
- Worn, damaged, or illegible safety decals must be replaced. New safety decals can be ordered from McMillen®.

MODEL X900 HIGH SPEED AUGER DRIVE



M-799 5-5-05-2

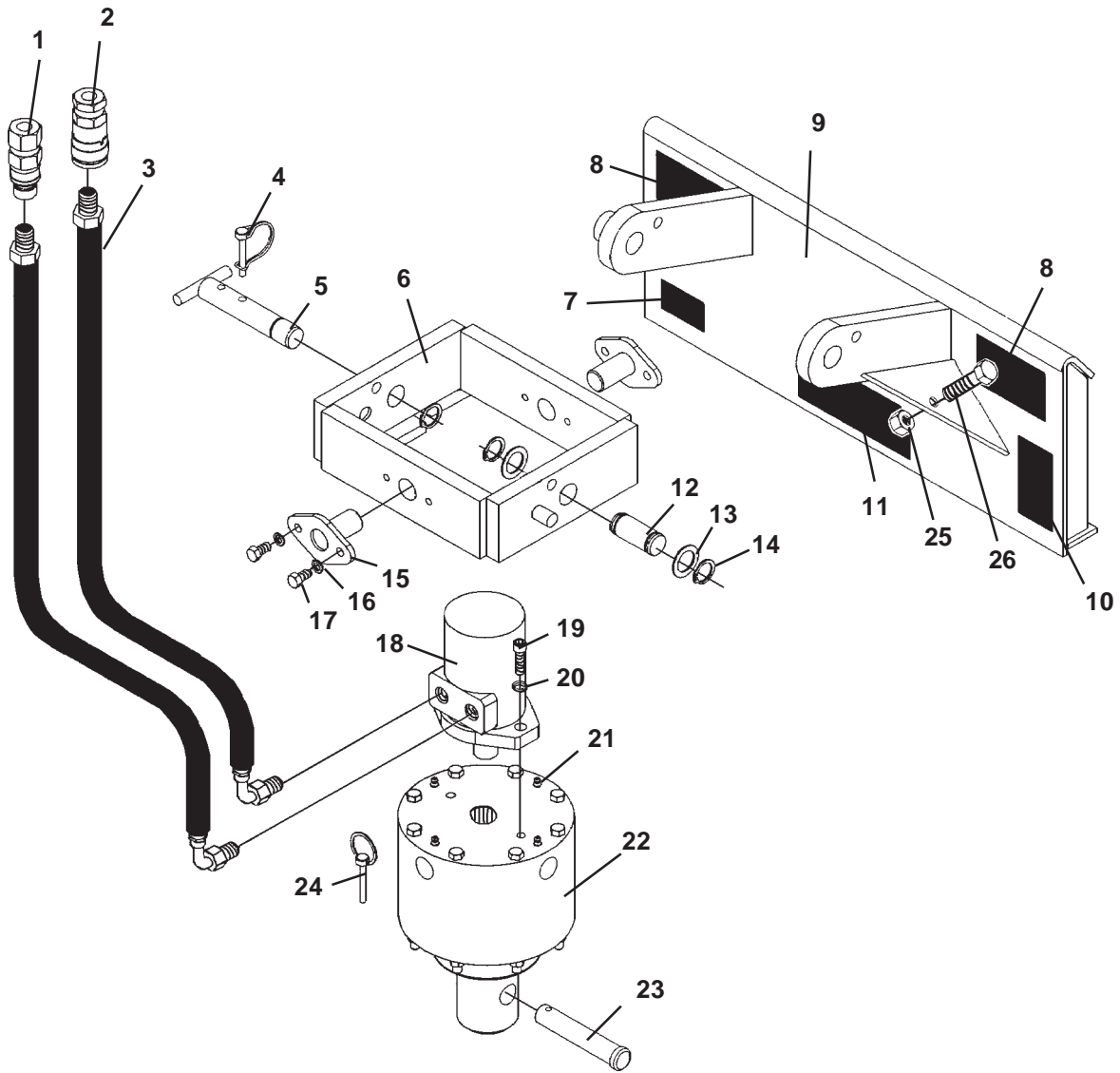
MODEL X900

HIGH SPEED AUGER DRIVE

<u>NO</u>	<u>REQ'D</u>	<u>PART NO.</u>	<u>DESCRIPTION</u>
1	1	24001	Male Coupler - Flat Face Style - 10FBo
	1	15512	Male Coupler - Poppet Style - 10FBo
2	1	24002	Female Coupler - Flat Face Style - 10FBo
	1	31886	Female Coupler - Poppet Style - 10FBo
3	2	38012	Hose .50" X 66" 10MBo - 10MBo 90°
4	1	22269	Lynch Pin
5	1	23958	Pin
6	1	23959	Dual Pivot Gimbel
7	1	--	Serial Number Tag Location
8	2	40582	Danger Decal
9	1	23960*	Universal Mounting Frame
10	1	40440	Call Before You Dig Decal
11	1	22654	McMillen Decal
12	1	54030	Pin
13	2	57462	Thrust Washer
14	3	6612	Snap Ring
15	2	23961	Pin
16	4	1503	.38" Lock Washer
17	4	1043	.38" UNC X 1.00" Hex Capscrew
18	1	16695	Hydraulic Motor - 4.0 Cu. In.
	1	45412	O-Ring
19	2	1907	.50" UNC X 1.25" SocketHead Capscrew
20	2	1505	.50" Lock Washer
21	4	6616	Replacement Grease Fitting
22	1	23957	Planetary
23	1	22262	Pin
24	1	21169	Klik Pin
25	2	1228	.50" UNC Hex Nut
26	2	1092	.50" UNC X 2.00" Hex Capscrew

* Mounting frames and couplers are specific to your loader application. Contact Factory or your local BRADCO dealer for these items that are not listed above.

MODEL X1500 HIGH TORQUE AUGER DRIVE



M-801 5-5-05-2

MODEL X1500

HIGH TORQUE AUGER DRIVE

<u>NO</u>	<u>REQ'D</u>	<u>PART NO.</u>	<u>DESCRIPTION</u>
1	1	24001	Male Coupler - Flat Face Style - 10FBo
	1	15512	Male Coupler - Poppet Style - 10FBo
2	1	24002	Female Coupler - Flat Face Style - 10FBo
	1	31886	Female Coupler - Poppet Style - 10FBo
3	2	38012	Hose .50" X 66" 10MBo - 10MBo 90°
4	1	22269	Lynch Pin
5	1	23958	Pin
6	1	23959	Dual Pivot Gimbel
7	1	--	Serial Number Tag Location
8	2	40582	Danger Decal
9	1	23960*	Universal Mounting Frame
10	1	40440	Call Before You Dig Decal
11	1	22654	McMillen Decal
12	1	54030	Pin
13	2	57462	Thrust Washer
14	3	6612	Snap Ring
15	2	23961	Pin
16	4	1503	.38" Lock Washer
17	4	1043	.38" UNC X 1.00" Hex Capscrew
18	1	33211	Hydraulic Motor - 8.0 Cu. In.
	1	45412	O-Ring
19	2	1907	.50" UNC X 1.25" SocketHead Capscrew
20	2	1505	.50" Lock Washer
21	4	6616	Replacement Grease Fitting
22	1	23957	Planetary
23	1	22262	Pin
24	1	21169	Klik Pin
25	2	1228	.50" UNC Hex Nut
26	2	1092	.50" UNC X 2.00" Hex Capscrew

* Mounting frames and couplers are specific to your loader application. Contact Factory or your local BRADCO dealer for these items that are not listed above.

AUGER INSTALLATION & OPERATION

INSTALLING THE DRIVE UNIT

1. READ AND UNDERSTAND ALL SAFETY INFORMATION BEFORE ATTEMPTING INSTALLATION.

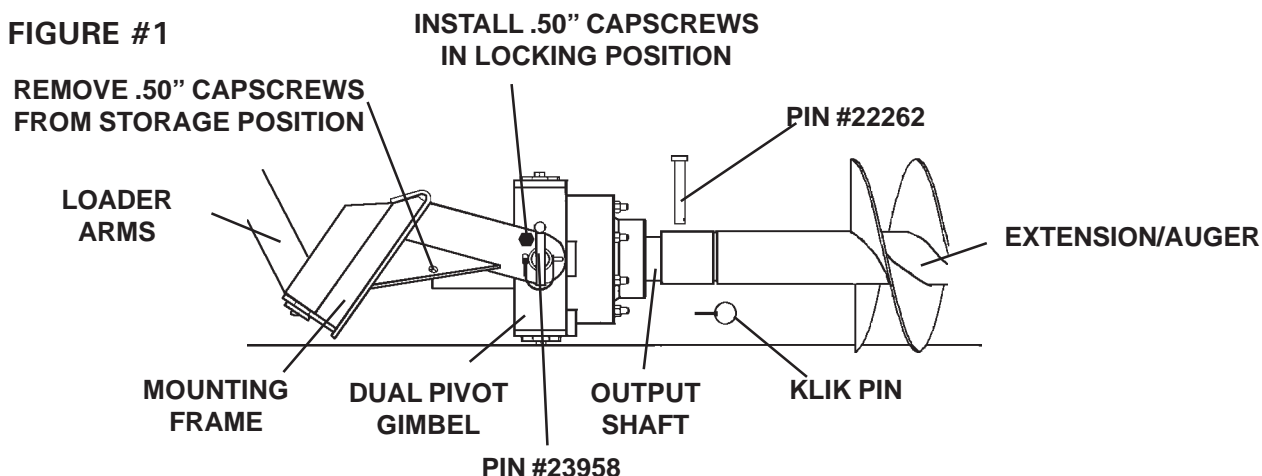
NOTE: Always use the mini loader to lift and move the drive unit. To move an auger without the drive unit, sling a strap over each end of the auger and hoist it to the desired location.

2. Remove bucket or other attachment from mini loader quick attach mechanism.
3. Attach the mounting bracket with the drive assembly to the mini loader's quick attach mechanism, as per the manufacturer's recommendations. ***Refer to your mini loader's Operator's Manual for more information on installing and removing attachments.***

INSTALLING AN AUGER

1. Lower the loader arms and rotate frame until the drive unit is on the ground and the output shaft is facing away from the loader. See Figure #1
2. Align the locking holes on the mounting frame ears with the locking holes on the dual pivot gimbel. Remove .50" x 2.00" capscrows #1092 and hex nuts #1228 from their storage location and install through the locking holes on both sides of the mounting frame. This will lock the drive unit in position for installing the extension/auger. (NOTE: Locking the drive unit allows for easy alignment of the output shaft to the extension/auger, whether it is located on the ground or on a trailer.) See Figure #1
3. Slowly drive up to the extension/auger, aligning the extension/auger over the output shaft, secure with pin #22262 and klik pin #21169. See Figure #1


FIGURE #1



NOTE: When pin #23958 is installed in the locked position, it will lock out the left to right pivoting function. With the pin in the unlocked position, the auger is free to pivot in both directions.

M-834 5-4-05

AUGER INSTALLATION & OPERATION

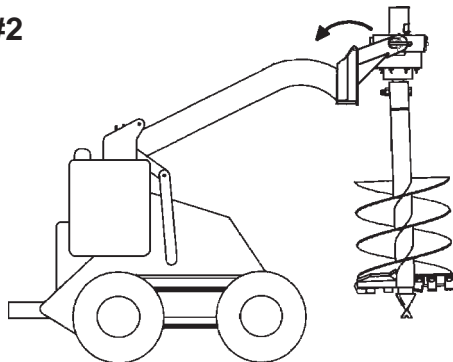
WARNING!  **KEEP HANDS AND FINGERS AWAY FROM THE MOUNTING ARMS ON THE MOUNTING BRACKET.** The auger drive unit swings freely in the mounting arms whenever it is not locked in position. Hands or fingers could get pinched, severely injured or amputated if caught between the mounting arms and the swinging drive head.

4. After the auger is securely attached to the drive unit, and still supported by either the trailer or the ground, remove the .50" capscrews #1092 and hex nuts #1228 from the locking position and install in the storage position. Start the engine and raise the auger free of the ground.

CAUTION! Do not operate the extension/auger in the locked position. Machine damage can occur.


5. When the auger is vertical, tilt the attachment plate back, until the drive head contacts the attachment plate. This will stabilize the auger and keep it from swinging freely. See Figure #2

FIGURE #2



RAISE THE AUGER AND TILT BACK TO STABILIZE THE AUGER AND KEEP IT FROM SWINGING

OPERATION

DANGER!  There may be buried power, gas, and/or utility lines in the work area that may cause electrocution or an explosion. Have the work area marked for buried lines and do not dig in the marked areas. If a utility line has been damaged, contact the affected utility at once.

IMPORTANT: Only use the auger if the point and teeth are intact and in good condition. Before digging, ensure that the ground is free of debris.

1. Lower the auger to the ground at the site of the proposed hole.
2. Increase the engine rpm and engage the auxiliary hydraulics.
3. Lower the auger slowly as the soil is loosened.

NOTE: As you dig deeper, move the mini loader backward, forward, right, or left as required to keep the hole vertical.

AUGER INSTALLATION & OPERATION

DANGER!



Excessive down force may cause the bit to wobble uncontrollably causing the machine to become unstable and tip over, crushing you or others. **DO NOT** use excessive down pressure on the bit. Allow the bit to pull itself into the soil.

4. When the auger becomes full of soil, disengage the auger drive and lift the auger from the hole. Engage the auger drive to spin off the soil, then resume digging.

NOTE: Switching rapidly from forward to reverse will help to shake off the soil.

STABILITY RATINGS

To determine the degree of slope you can traverse with the auger installed on a mini loader, find the stability rating for the following hill positions in the mini loader operator's manual.

FRONT UPHILL



When positioned with the front of the mini loader uphill, the smaller the auger, the lower the stability rating.

REAR UPHILL



When positioned with the rear of the mini loader uphill, the smaller the auger, the better the stability rating.

SIDE UPHILL



When positioned along the hill, the smaller the auger, the better the stability rating.

It is recommended to use a counterweight when using the auger drive head with an auger larger than 12". Failure to use a counterweight will cause the mini loader to become unstable. Do not use a counterweight when using the auger head without an auger or with an auger smaller than 12". If you use the counterweight, the mini loader will be less stable in the front and side uphill positions.

MAINTENANCE

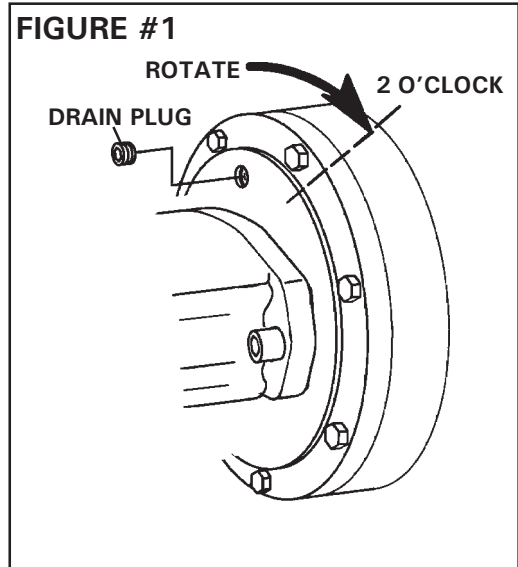
SERVICE INTERVALS

INSPECT AUGER TEETH	BEFORE EACH USE (Replace if damaged.)
CHECK PLANETARY GEAR CASE OIL	EVERY 25 HOURS
CHANGE PLANETARY GEAR CASE OIL	EVERY 1000 HOURS

CHECKING PLANETARY GEAR CASE OIL

Check the oil level in the planetary gear case every 25 hours, and top off the oil if necessary.

1. Place the auger drive head on the ground so that the driveshaft is parallel with the ground.
2. Rotate the drive head so that the oil drain plug is located on top. See Figure #1.
3. Remove the oil drain plug.
4. Rotate the auger drive head so that the drain opening is at the 2 o'clock or 10 o'clock position.
(See Figure #1) Oil should just begin to come out of the opening.
5. If no oil comes out of the opening, add oil (a mild, extreme pressure lubricant API-GL-5, number 80 or 90) until the oil starts to run out when the drain hole is at the 2 o'clock or 10 o'clock position.
6. Replace the drain plug.



CHANGING PLANETARY GEAR CASE OIL

Change the oil after the first 50 hours of operation and every 1000 hours thereafter. The planetary gear case requires approximately 2 pints of a mild, extreme pressure lubricant, rated APT-GL-5, number 80 or 90.

1. Support the drive head over an oil pan so that the oil drain plug is on the bottom of the drive head, facing the oil pan.
2. Remove the oil drain plug to drain the oil.
3. When the oil is completely drained, turn the drive head so that the oil drain opening is on the top of the drive head, facing up.
4. Add approximately 2 pints of a mild, extreme pressure lubricant, rated APT-GL-5, number 80 or 90.
5. Replace the drain plug.

M-837 5-4-04

STORAGE

GENERAL INFORMATION

The following storage procedure will help you to keep your auger in top condition. It will also help you get off to a good start the next time your auger is needed. We therefore strongly recommend that you take the extra time to follow these procedures whenever your auger will not be used for an extended period of time.

1. Wash the attachment with a mild detergent and water.
2. Check and tighten all bolts, nuts, and capscrews. Repair or replace any damaged or worn parts.
3. Ensure that all hydraulic couplers are connected together to prevent contamination of the hydraulic system.
4. Paint all scratched or bare metal surfaces.
5. Store the attachment in a clean, dry garage or storage area. Cover it to protect it and keep it clean.

NOTE: Before removing the auger from storage; check all bolts, nuts, and capscrews for tightness and inspect the power and return lines for deterioration.

TROUBLESHOOTING

PROBLEM	POSSIBLE CAUSE	SOLUTION
Drive head does not operate.	Hydraulic coupler not completely connected.	Check and tighten all couplers.
	Defective hydraulic coupler.	Check couplers and replace if defective.
	Obstruction in hydraulic hose.	Find and remove obstruction.
	Kinked hydraulic hose.	Replace the kinked hose.
	Contamination in the gearbox.	Call Authorized Service Dealer.
Slow Speed	Low Flow	Check with flow meter. If low investigate cause.
	Line restrictions	Clear lines
	Fittings or connections too small	Replace with proper sizes.
	Oil filter dirty	Replace
	Hydraulic pump worn or damaged	See Dealer for repair
Insufficient Digging Power	Worn teeth or point	Replace
	Low system Pressure (PSI)	Check with pressure gauge. If low, investigate cause.
	Relief Valve damaged or setting wrong	Adjust or replace as required.
	Excessive load	Reduce load to within machine
Reverse Direction	Hoses reversed	Re-install hoses correctly.
Excessive Oil Heating	Line restrictions	Clear lines
	Fluid dirty	Replace hydraulic fluid and filter.
	Insufficient quantity of hydraulic fluid	Fill reservoir to proper level. Increase reservoir storage capacity.
Oil Leaks	Hoses loose or damaged	Tighten or replace
	Fittings loose or damaged	Tighten or replace
	Hydraulic motor seals worn or damaged	See Dealer for repair.

HDC STYLE AUGER WEAR PARTS LIST

AUGER DIA.	6"	8"	9"	10"	12"	15"	16"	18"	20"	24"	30"	36"	42"	48"
	152mm	203mm	229mm	254mm	305mm	381mm	406mm	457mm	508mm	610mm	762mm	914mm	1067mm	1219mm
Part #	Description(Standard Components)	Qty	Qty	Qty	Qty	Qty	Qty	Qty	Qty	Qty	Qty	Qty	Qty	Qty
22169	Hardened Drive-In Gage Tooth	2	2	2	2	2	2	2	2	2	2	2	2	2
22168	Hardened Drive-In Wisdom Tooth	-	2	2	2	4	4	4	4	6	8	10	14	18
22190	3.50" Hardened Fishtail Point (male shaft)	1	1	1	1	1	1	1	1	1	1	1	1	1
22154	Rubber Lock	2	4	4	4	6	6	6	6	8	10	12	16	20

HDF STYLE AUGER WEAR PARTS LIST

AUGER DIA.	4"	6"	8"	9"	10"	12"	15"	16"	18"	20"	24"	30"	36"
	102mm	152mm	203mm	229mm	254mm	305mm	381mm	406mm	457mm	508mm	610mm	762mm	914mm
Part #	Description(Standard Components)	Qty	Qty	Qty	Qty	Qty	Qty	Qty	Qty	Qty	Qty	Qty	Qty
22169	Hardened Bolt-on Gage Tooth	-	2	2	2	2	2	2	2	2	2	2	2
22168	Hardened Bolt-on Wisdom Tooth	-	-	-	1	1	2	3	4	4	6	7	9
22190	3.50" Hardened Fishtail Point (male shaft)	-	1	1	1	1	1	1	1	1	1	1	1
22003	4.50" Hardened Fishtail Point	1	-	-	-	-	-	-	-	-	-	-	-
22306	Carriage Bolt	-	2	2	3	3	4	5	6	6	8	9	11
1839	Nut	-	2	2	3	3	4	5	6	6	8	9	11

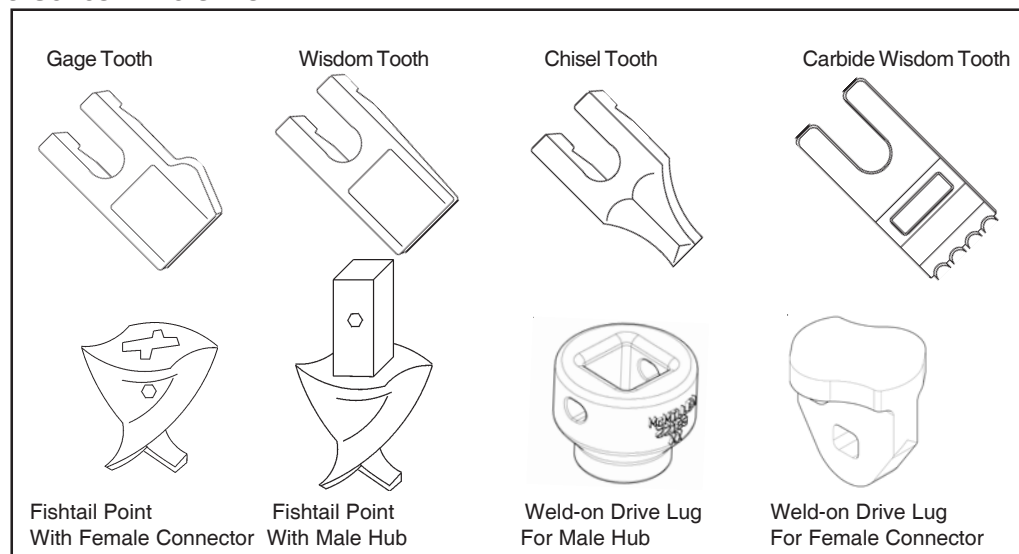
HTF STYLE AUGER WEAR PARTS LIST

AUGER DIA.	18"	24"	30"	36"	42"	48"
	457mm	610mm	762mm	914mm	1067mm	1219mm
Part #	Description(Standard Components)	QTY	QTY	QTY	QTY	QTY
22169	Hardened Bolt-on Gage Tooth	4	4	4	4	4
22168	Hardened Bolt-on Wisdom Tooth	3	6	7	9	11
22190	3.50" Hardened Fishtail Point (male shaft)	1	1	1	1	1
22306	Carriage Bolt	7	10	11	13	15
1839	Nut	7	10	11	13	15

OPTIONAL HARDFACED & CARBIDE WEAR COMPONENTS

Part #	Description
22170	Hardfaced Wisdom Tooth
22186	Carbide Wisdom Tooth
22181	Hardened Chisel Tooth
22183	Hardfaced Chisel Tooth
22182	Carbide Chisel Tooth
22190	3.50" Hardened Fishtail Point (Male Hub)
22192	3.50" Hardfaced Fishtail Point (Male Hub)
22191	3.50" Carbide Fishtail Point (Male Hub)
22193	3.50" Hardfaced /Carbide Fishtail Point (Male Hub)
22003	4.50" Hardened Fishtail Point (Female)
22004	4.50" Hardfaced Fishtail Point (Female)
22005	4.50" Hardfaced /Carbide Fishtail Point (Female)
22171	3.50" Hardened Fishtail Point (Female)
22172	3.50" Carbide Fishtail Point (Female)
22173	3.50" Hardfaced Fishtail Point (Female)
22174	3.50" Hardfaced /Carbide Fishtail Point (Female)

IMPORTANT: McMillen does not recommend augers exceeding 36" diameter for C-Series Drive Units.



NOTE: Contact your equipment dealer for wear components not listed above. If you have any special auger needs or applications, feel free to contact McMillen.

M-118 4-27-05-3

Limited Warranty

Except for the Excluded Products as described below, all new products are warranted to be free from defects in material and/or workmanship during the Warranty Period, in accordance with and subject to the terms and conditions of this Limited Warranty.

1. Excluded Products. The following products are excluded from this Limited Warranty:

(a) Any cable, part that engages with the ground (i.e. sprockets), digging chain, bearing, teeth, tamping and/or demolition head, blade cutting edge, pilot bit, auger teeth and broom brush that either constitutes or is part of a product.

(b) Any product, merchandise or component that, in the opinion of Paladin Light Construction¹, has been (i) misused; (ii) modified in any unauthorized manner; (iii) altered; (iv) damaged; (v) involved in an accident; or (vi) repaired using parts not obtained through Paladin Light Construction.

2. Warranty Period. The Limited Warranty is provided only to those defects that occur during the Warranty Period, which is the period that begins on the first to occur of: (i) the date of initial purchase by an end-user, (ii) the date the product is first leased or rented, or (iii) the date that is six (6) months after the date of shipment by Paladin Light Construction as evidenced by the invoiced shipment date (the "Commencement Date") and ends on the date that is twelve (12) months after the Commencement Date.

3. Terms and Conditions of Limited Warranty. The following terms and conditions apply to the Limited Warranty hereby provided:

(a) Option to Repair or Replace. Paladin Light Construction shall have the option to repair or replace the product.

(b) Timely Repair and Notice. In order to obtain the Limited Warranty, (i) the product must be repaired within thirty (30) days from the date of failure, and (ii) a claim under the warranty must be submitted to Paladin Light Construction in writing within thirty (30) days from the date of repair.

(c) Return of Defective Part or Product. If requested by Paladin Light Construction, the alleged defective part or product shall be shipped to Paladin Light Construction at its manufacturing facility or other location specified by Paladin Light Construction, with freight PRE-PAID by the claimant, to allow Paladin Light Construction to inspect the part or product.

Claims that fail to comply with any of the above terms and conditions shall be denied.

LIMITATIONS AND EXCLUSIONS.

THIS LIMITED WARRANTY IS IN LIEU OF ALL OTHER WARRANTIES, EXPRESS OR IMPLIED, INCLUDING WITHOUT LIMITATION THE WARRANTIES OF MERCHANTABILITY, FITNESS FOR A PARTICULAR PURPOSE AND ANY WARRANTY BASED ON A COURSE OF DEALING OR USAGE OF TRADE.

IN NO EVENT SHALL PALADIN LIGHT CONSTRUCTION BE LIABLE FOR CONSEQUENTIAL OR SPECIAL DAMAGES.

IN NO EVENT SHALL PALADIN LIGHT CONSTRUCTION BE LIABLE FOR ANY LOSS OR CLAIM IN AN AMOUNT IN EXCESS OF THE PURCHASE PRICE, OR, AT THE OPTION OF PALADIN LIGHT CONSTRUCTION, THE REPAIR OR REPLACEMENT, OF THE PARTICULAR PRODUCT ON WHICH ANY CLAIM OF LOSS OR DAMAGE IS BASED. THIS LIMITATION OF LIABILITY APPLIES IRRESPECTIVE OF WHETHER THE CLAIM IS BASED ON BREACH OF CONTRACT, BREACH OF WARRANTY, NEGLIGENCE OR OTHER CAUSE AND WHETHER THE ALLEGED DEFECT IS DISCOVERABLE OR LATENT.

¹Attachment Technologies Inc., a subsidiary of Paladin Brands Holding, Inc. (PBHI) is referred to herein as Paladin Light Construction.

February 10, 2010