



PALADIN
LIGHT CONSTRUCTION GROUP

 **BRADCO**

 **FFC**

 **HARLEY**

 **McMILLEN**

 **SWEEPSTER**

The Power of Combined Excellence

Installation Instructions and Parts List For



Truck Chute Kit High Flow
Snow Blower G & H
28-10715

For Models:
11072, 11078, 11084 and 11096



Notes



Mounting Instructions

IMPORTANT! TO PERFORM THE FOLLOWING TASKS, SNOW BLOWER SHOULD BE RESTING COMPLETELY ON THE GROUND, DETACHED FROM YOUR SKID STEER. HYDRAULIC LINES SHOULD BE DISCONNECTED FROM THE SKID STEER.

1. Unpack parts and then compare them to the parts list. If you discover any shortages, contact FFC or your dealer.
2. Remove the chute motor guard covering the rotary actuator.
3. Disconnect the chute deflector cylinder and chute rotary actuator hydraulic lines from the manifold, leaving the fittings on the manifold.
4. Remove the rotary actuator.
5. Remove the two pan head bolts securing the plastic liner to the chute deflector. Save these bolts, as they are reused.
6. Install chute deflector extender to chute deflector, ensuring plastic deflector liner is installed onto extender, using the supplied longer pan head bolts.
7. Using the previously removed pan head bolts (step 5) secure the new plastic deflector liner to the end of the deflector extender.
8. Using the holes on the side of the deflector extender as a guide, drill four 9/32nd diameter holes through the deflector extender and the chute deflector.
9. Using the 1/4 inch hardware, connect the chute deflector to the deflector extender.
10. Remove the chute from the blower frame.
11. Remove the plastic chute rotation pad from the blower frame.
12. Install plastic chute rotation pad onto the truck chute.
13. Install the chute onto the truck chute.
14. Install the rotary actuator onto the truck chute. Slide the actuator till it is tight between the two sprockets, then back off 1/32nd to 1-16th and tighten hardware.
15. Install chute motor guard onto the truck chute.
16. Remove the hoses and existing fittings from the rotary actuator and connect the 90° elbows where the existing fittings were, then reconnect the hoses to the 90° elbows.
17. Connect the 72 inch hose extensions using supplied fittings to deflector cylinder hoses. Connect 57 inch hose extensions using supplied fittings to rotary actuator hoses.

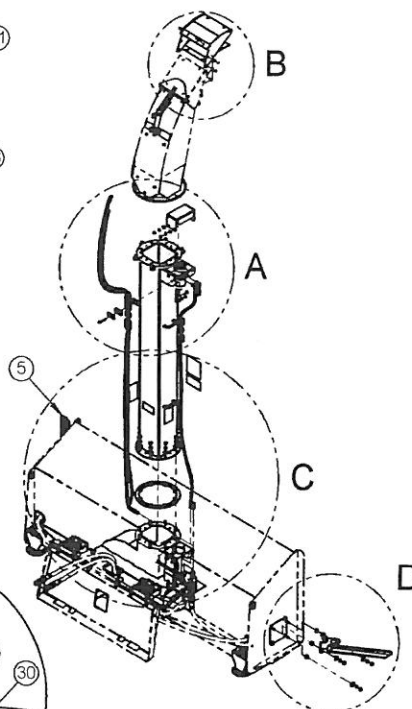
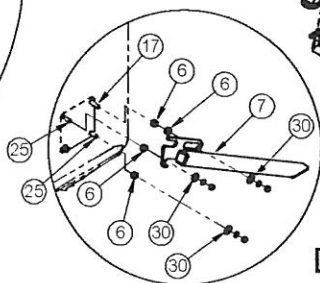
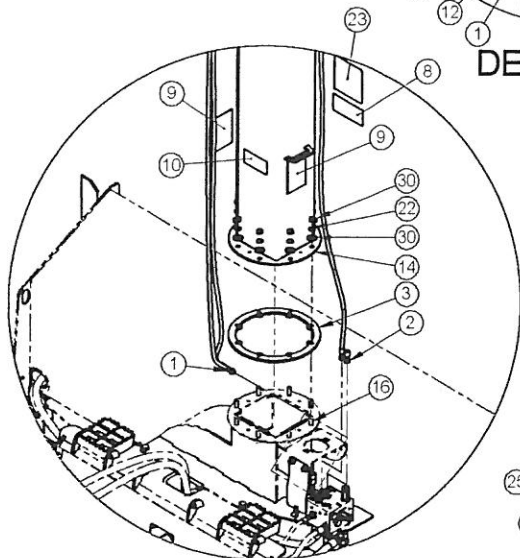
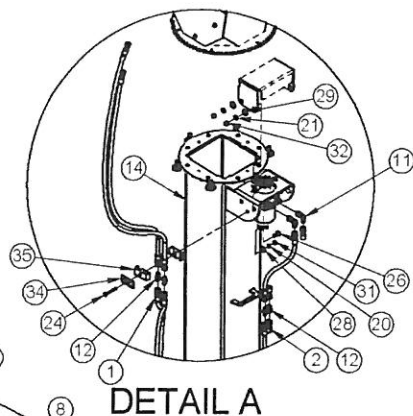
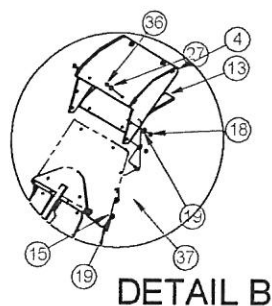


Mounting Instructions

18. Install the hose cradle to the truck chute and route the deflector cylinder hoses through the openings. Ensure the hose has enough length to accommodate full rotation of the chute.
19. Route hydraulic hoses through guides on truck chute.
20. Install the truck chute stands to each end of the blower frame by removing the auger mounting hardware. Add spacers and washers as shown.
21. Install the truck chute onto the blower frame, ensuring spacer plate is added between truck chute and blower.
22. Connect the hydraulic hoses to their respective ports on the manifold.
23. Install the manifold guard onto the blower frame in its original location.
24. Re-connect the snow blower to the skid steer to test the new connections. If any connections leak, follow the proper shut down procedure for your skid steer, including relieving hydraulic pressure. Re-tighten the leaking fitting(s) and check for leaks again. Fully rotate the chute in both directions to check for ample slack in the hoses.



Parts List



Item	Part	Qty	Description
1.	03-2155	2	Hose, .25 x 72, 6FF-6FF
2.	03-5333	2	Hose, .25 x 57, 6FF-6FF
3.	13-17584	1	Plate, Spacer
4.	13-50481	1	Weld, Deflector, Extension
5.	13-50497	1	Weld, Stand, Left
6.	13-50498	8	Tube, Round, 1 x 1.016 x .5
7.	13-50500	1	Weld, Stand, Right
8.	50-0727	1	Label, Warning, Flying Objects
9.	50-10003	2	Label, Warning, Tipping Hazard
10.	50-10017	1	Label, Warning, Avoid Serious Injury
11.	03-1953	2	Elbow, 90°, 6MF-10MB
12.	03-2495	4	Fitting, 6MF-6MF
13.	LAF6551	1	Deflector, Liner
14.	LAF6576	1	Weld, Truck Chute
15.	P100403	4	Screw, Hex, Cap, 1/4-20 x 3/4, Gr5
16.	P100807	8	Bolt, Hex, 1/2-13 x 1 3/4, Gr5
17.	P100810	2	Bolt, Hex, 1/2 x 2 1/2, Gr5
18.	P158003	4	Nut, Nylock, 1/4-20

Item	Part	Qty	Description
19.	P850104	8	Washer, Flat, 1/4, Gr5
20.	P851105	1	Washer, Lock, 5/16
21.	P851106	2	Washer, Lock, 3/8
22.	P851108	8	Washer, Lock, 1/2
23.	RDL3163	1	Label, Danger, Rotating Fan
24.	RHW1111	1	Screw, Hex Head, Cap, 5/16-18 x 2 1/4, Gr5
25.	RHW1407	4	Screw, Hex, Cap, 1/2 x 5, Gr5
26.	RHW2205	2	Bolt, Carriage, 3/8-16 x 1, Gr5
27.	RHW5031	2	Washer, Flat, SAE, .19, Gr2
28.	RHW5162	1	Washer, Flat, USS, 5/16, Gr5
29.	RHW5262	2	Washer, Flat, USS, 3/8, Gr5
30.	RHW5462	22	Washer, Flat, USS, 1/2, Gr5
31.	RHW7101	1	Nut, Hex, 5/16, Gr5
32.	RHW7201	2	Nut, Hex, 3/8, Gr5
33.	RHW7401	8	Nut, Hex, 1/2, Gr5
34.	RHW8614	1	Cover, Plate
35.	RHW8616	1	Hose Cradle
36.	RHW9002	2	Nut, Nylock, .19(10) -24, Gr2
37.	RHW9006	2	Screw, Machine, #10-24 x 1



