



OPERATOR'S AND PARTS MANUAL

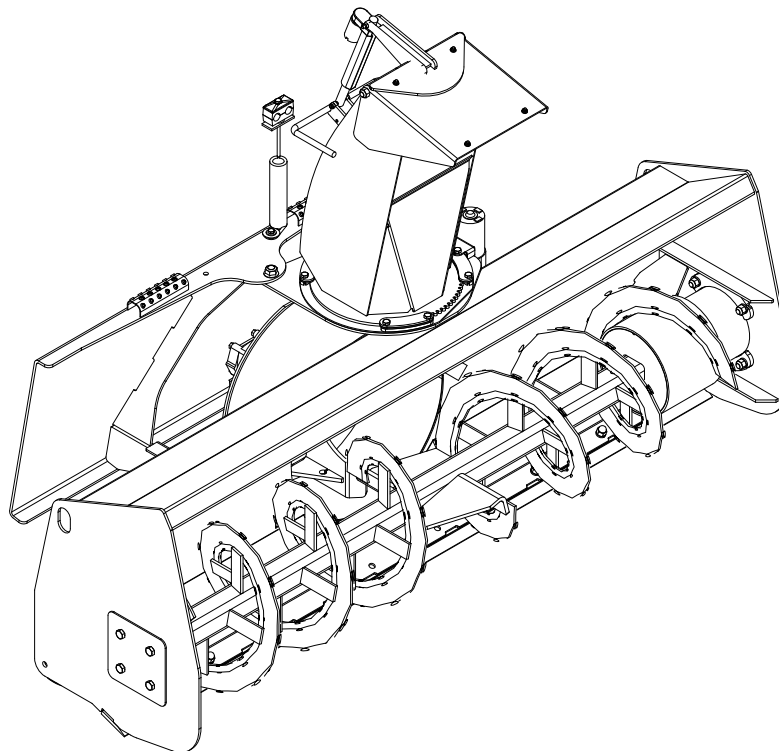
HYDRAULIC SNOW BLOWER



PALADIN
LIGHT CONSTRUCTION GROUP



The Power of Combined Excellence



SERIAL NUMBER: _____

MODEL NUMBER: _____

Manual Number: MR45576

Models:

STD: LAF6748 & 11048

**STD: 11005, 11006, 11008, 11007, 11060,
11072, 11078 & 11084**

**HF: LAF6774, 11009, LAF6786, LAF6798
11072, 11078, 11084 & 11096**

Serial Number 0945200 and Up

Rev. 3

Notes


TABLE OF CONTENTS

PREFACE	2
OWNER AND OPERATOR SAFETY INFORMATION	
SAFETY STATEMENTS.....	3
GENERAL SAFETY PRECAUTIONS.....	3-6
SAFETY SIGNS.....	7-8
INSTALLATION & SET-UP.....	9-11
OPERATION	12-17
JOY STICK ILLUSTRATIONS	12-13
GENERAL STORAGE.....	16
LIFT POINTS & TIE DOWN POINTS.....	17
MAINTENANCE	18-19
TROUBLESHOOTING.....	20
PART ILLUSTRATIONS	
STANDARD PARTS LIST.....	22-39
HIGH FLOW PARTS LIST.....	40-55
SPECIFICATIONS	
SNOW BLOWER.....	56
BOLT TORQUE.....	57
WARRANTY	58

PREFACE

GENERAL INFORMATION

This product was carefully designed and manufactured to give you many years of dependable service. Only minor maintenance (such as cleaning and lubricating) is required to keep it in top working condition. Be sure to observe all maintenance procedures and safety precautions in this manual and on any safety decals located on the product and on any equipment on which the attachment is mounted.

WARNING!  **Never let anyone operate this unit without reading the “Safety Precautions” and “Operating Instructions” sections of this manual. Always choose hard, level ground to park the vehicle on and set the brake so the unit cannot roll.**

Unless noted otherwise, right and left sides are determined from the operator’s control position when facing the attachment.

NOTE: The illustrations and data used in this manual were current (according to the information available to us) at the time of printing, however, we reserve the right to redesign and change the attachment as may be necessary without notification.

BEFORE OPERATION

The primary responsibility for safety with equipment falls to the operator. Make sure the equipment is operated only by trained individuals that have read and understand this manual. If there is any portion of this manual or function you do not understand, contact your local authorized dealer or manufacturer to obtain further assistance. Keep this manual available for reference. Provide this manual to any new owners and/or operator’s

SAFETY ALERT SYMBOL



This is the “Safety Alert Symbol” used by this industry. This symbol is used to warn of possible injury. Be sure to read all warnings carefully. They are included for your safety and the safety of others working with you.

SERVICE

Use only manufacturer replacement parts. Substitute parts may not meet the required standards. Record the model and serial number of your unit on the cover of this manual. The parts department needs this information to insure that you receive the correct parts.

SOUND AND VIBRATION

“Sound pressure levels and vibration data for this attachment are influenced by many different parameters; some items are listed below (not inclusive):

- prime mover type, age, condition, with or without cab enclosure and configuration
- operator training, behavior, stress level
- job site organization, working material condition, environment

Based on the uncertainty of the prime mover, operator, and job site, it is impossible to get precise machine and operator sound pressure levels, or vibration levels for this attachment.”

SAFETY STATEMENTS



THIS SYMBOL BY ITSELF OR WITH A WARNING WORD THROUGHOUT THIS MANUAL IS USED TO CALL YOUR ATTENTION TO INSTRUCTIONS INVOLVING YOUR PERSONAL SAFETY OR THE SAFETY OF OTHERS. FAILURE TO FOLLOW THESE INSTRUCTIONS CAN RESULT IN INJURY OR DEATH.



DANGER

THIS SIGNAL WORD IS USED WHERE SERIOUS INJURY OR DEATH WILL RESULT IF THE INSTRUCTIONS ARE NOT FOLLOWED PROPERLY.



WARNING

THIS SIGNAL WORD IS USED WHERE SERIOUS INJURY OR DEATH COULD RESULT IF THE INSTRUCTIONS ARE NOT FOLLOWED PROPERLY.



CAUTION

THIS SIGNAL WORD IS USED WHERE MINOR INJURY COULD RESULT IF THE INSTRUCTIONS ARE NOT FOLLOWED PROPERLY.

NOTICE

NOTICE INDICATES A PROPERTY DAMAGE MESSAGE.

GENERAL SAFETY PRECAUTIONS

WARNING! READ MANUAL PRIOR TO INSTALLATION



Improper installation, operation, or maintenance of this equipment could result in serious injury or death. Operators and maintenance personnel should read this manual, as well as all manuals related to this equipment and the prime mover thoroughly before beginning installation, operation, or maintenance. **FOLLOW ALL SAFETY INSTRUCTIONS IN THIS MANUAL AND THE PRIME MOVER'S MANUAL(S).**



READ AND UNDERSTAND ALL SAFETY STATEMENTS

Read all safety decals and safety statements in all manuals prior to operating or working on this equipment. Know and obey all OSHA regulations, local laws, and other professional guidelines for your operation. Know and follow good work practices when assembling, maintaining, repairing, mounting, removing, or operating this equipment.



KNOW YOUR EQUIPMENT

Know your equipment's capabilities, dimensions and operations before operating. Visually inspect your equipment before you start, and never operate equipment that is not in proper working order with all safety devices intact. Check all hardware to ensure it is tight. Make certain that all locking pins, latches, and connection devices are properly installed and secured. Remove and replace any damaged, fatigued, or excessively worn parts. Make certain all safety decals are in place and are legible. Keep decals clean, and replace them if they become worn and hard to read.

GENERAL SAFETY PRECAUTIONS

WARNING! PROTECT AGAINST FLYING DEBRIS



Always wear proper safety glasses, goggles or a face shield when driving pins in or out, or when any operation causes dust, flying debris, or any other hazardous material.

WARNING! LOWER OR SUPPORT RAISED EQUIPMENT



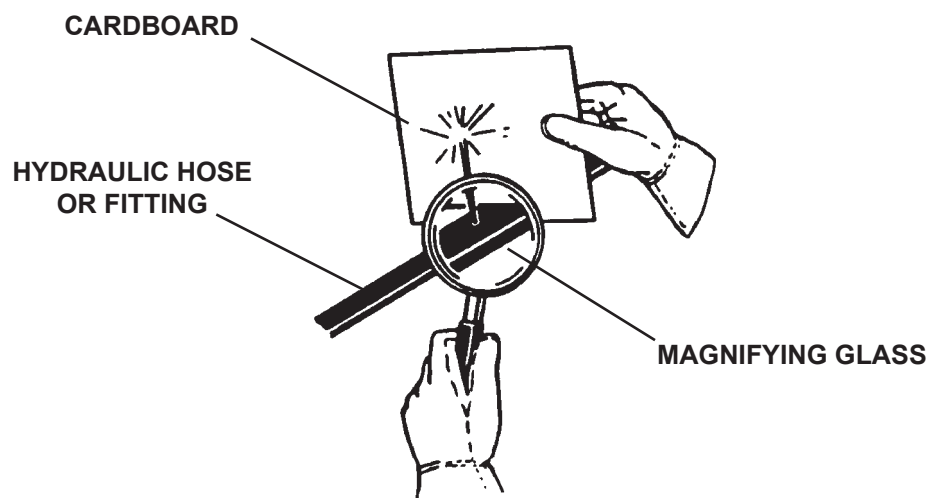
Do not work under raised booms without supporting them. Do not use support material made of concrete blocks, logs, buckets, barrels or any other material that could suddenly collapse or shift positions. Make sure support material is solid, not decayed, warped, twisted, or tapered. Lower booms to ground level or onto blocks. Lower booms and attachments to the ground before leaving the cab or operator's station.

WARNING! USE CARE WITH HYDRAULIC FLUID PRESSURE



Hydraulic fluid under pressure can penetrate the skin and cause serious injury or death. Hydraulic leaks under pressure may not be visible. Before connecting or disconnecting hydraulic hoses, read your prime movers operator's manual for detailed instructions on connecting and disconnecting hydraulic hoses or fittings.

- Keep unprotected body parts, such as face, eyes, and arms as far away as possible from a suspected leak. Flesh injected with hydraulic fluid may develop gangrene or other permanent disabilities.
- If injured by injected fluid, see a doctor at once. If your doctor is not familiar with this type of injury, ask him to research immediately to determine proper treatment.
- Wear safety glasses, protective clothing, and use a sound piece of cardboard or wood when searching for hydraulic leaks. **DO NOT USE YOUR HANDS!** **SEE ILLUSTRATION.**



GENERAL SAFETY PRECAUTIONS

WARNING! DO NOT MODIFY MACHINE OR ATTACHMENTS



Modifications may weaken the integrity of the attachment and may impair the function, safety, life, and performance of the attachment. When making repairs, use only the manufacturer's genuine parts, following authorized instructions. Other parts may be substandard in fit and quality. Never modify any ROPS (Roll Over Protection Structure) or FOPS (Falling Object Protective Structure) equipment or device. Any modifications must be authorized in writing by the manufacturer.

WARNING! SAFELY MAINTAIN AND REPAIR EQUIPMENT



- Do not wear loose clothing, or any accessories that can catch in moving parts. If you have long hair, cover or secure it so that it does not become entangled in the equipment.
- Work on a level surface in a well-lit area.
- Use properly grounded electrical outlets and tools.
- Use the correct tool for the job at hand. Make sure they are in good condition for the task required.
- Wear the protective equipment specified by the tool manufacturer.

WARNING! SAFELY OPERATE EQUIPMENT



Do not operate equipment until you are completely trained by a qualified operator in how to use the controls, know its capabilities, dimensions, and all safety requirements. See your machine's manual for these instructions.

- Keep all step plates, grab bars, pedals, and controls free of dirt, grease, debris, and oil.
- Never allow anyone to be around the equipment when it is operating.
- Do not allow riders on the attachment or the prime mover.
- Do not operate the equipment from anywhere other than the correct operators position.
- Never leave equipment unattended with the engine running or with this attachment in a raised position.
- Do not alter or remove any safety feature from the prime mover or this attachment.
- Know your work site safety rules as well as traffic rules and flow. When in doubt on any safety issue, contact your supervisor or safety coordinator for an explanation.

EQUIPMENT SAFETY PRECAUTIONS

WARNING! REMOVE PAINT BEFORE WELDING OR HEATING.



Hazardous fumes/dust can be generated when paint is heated by welding, soldering or using a torch. Do all work outside or in a well ventilated area and dispose of paint and solvent properly. Remove paint before welding or heating.

When sanding or grinding paint, avoid breathing the dust. Wear an approved respirator. If you use solvent or paint stripper, remove stripper with soap and water before welding. Remove solvent or paint stripper containers and other flammable material from area. Allow fumes to disperse at least 15 minutes before welding or heating.

WARNING! END OF LIFE DISPOSAL.



At the completion of the useful life of the unit, drain all fluids and dismantle by separating the different materials (rubber, steel, plastic, etc.). Follow all federal, state and local regulations for recycling and disposal of the fluid and components.

WARNING! KNOW WHERE UTILITIES ARE



Observe overhead electrical and other utility lines. Be sure equipment will clear them. When digging, call your local utilities for location of buried utility lines, gas, water, and sewer, as well as any other hazard you may encounter.

DANGER! ROTATING OBJECTS



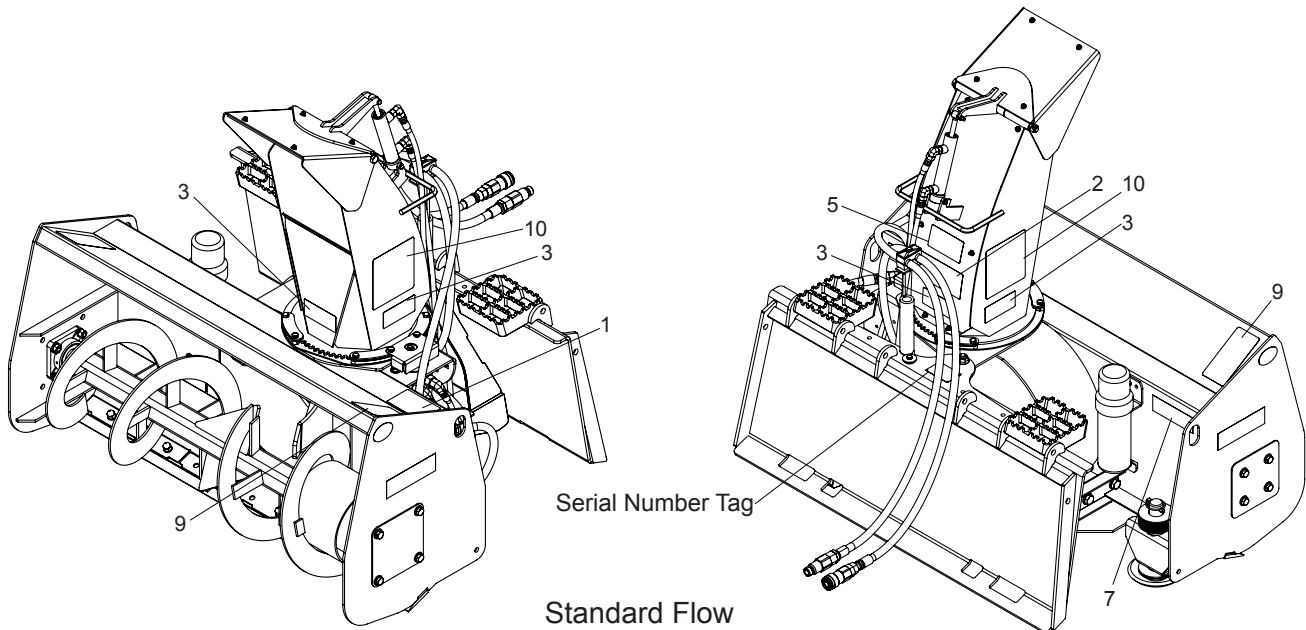
- Never allow anyone to reach into, kick into, or otherwise come in contact with a rotating auger or with a non-rotating clogged auger. The auger can crush and/or dismember. Keep everyone clear of the auger until the prime mover engine is off and the hydraulic pressure has been relieved.
- Never allow anyone to reach into the chute, force objects (i.e. bars, poles, etc.) down the chute, kick into the fan, or otherwise come in contact with a rotating fan or with a non-rotating clogged fan. The fan can throw objects at a lethal speed and can dismember. Keep everyone clear of the fan until the prime mover engine is off and the hydraulic pressure has been relieved.

CAUTION! AVOID ELECTRICAL SHOCK

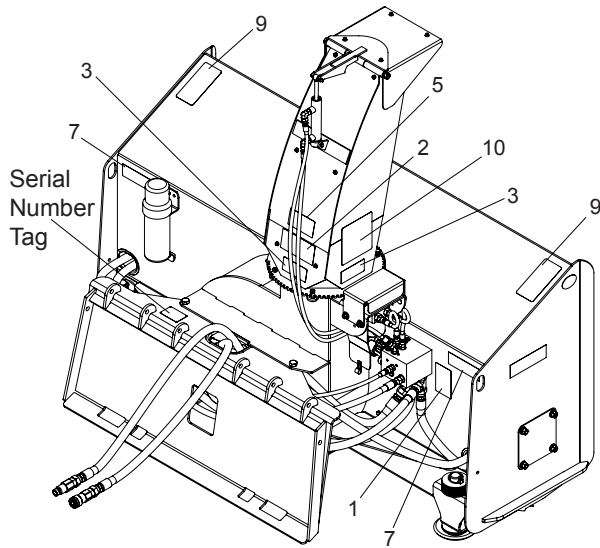


- To avoid electrical shock during the wiring harness installation, remove the ground cable from the battery of your prime mover.
- Be aware that turning off the prime mover key does not cut the power to the chute rotation motor or to the chute deflector actuator. With the switches for these devices being powered 100% of the time, care must be taken to not engage these switches:
 - accidentally at any time, especially when entering or leaving the prime mover operator's position, or
 - when others are working on or near the actuator, the deflector, the chute, or any other part of this product that could cause personal injury if the switch or switches are engaged.
- Avoid pinch points and be aware of rotating parts when manually turning the fan or auger.

SAFETY DECAL LOCATIONS



Standard Flow



High Flow

Item	Part	Qty	Description
1.	50-0724	1	Label, Warning, High Pressure Fluid
2.	50-0727	1	Label, Warning, Flying Objects
3.	50-0737	4	Label, Warning, Pinch Point Hazard
5.	50-10017	1	Label, Warning Avoid Serious Injury
7.	RDL3131	2	Red Reflective Tape, 2 x 6
9.	RDL3161	2	Warning, Auger
10.	RDL3163	2	Safety Sign Danger Rotating Fan

INSTRUCTIONS

- Keep all safety signs clean and legible.
- Replace all missing, illegible, or damaged safety signs.
- Replacement parts for parts with safety signs attached must also have safety signs attached.
- Safety signs are available, free of charge, from your dealer or from FFC.

PLACEMENT OR REPLACEMENT OF SAFETY SIGNS

1. Clean the area of application with non-flammable solvent, and then wash the same area with soap and water.
2. Allow the surface to fully dry.
3. Remove the backing from the safety sign, exposing the adhesive surface.
4. Apply the safety sign to the position shown in the diagram above and smooth out any bubbles.

SAFETY DECALS



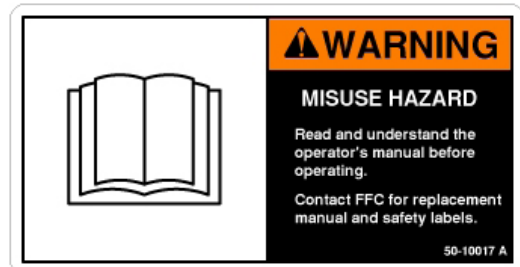
1. 50-0724
WARNING! HIGH PRESSURE FLUID



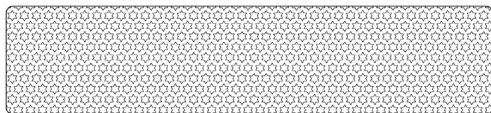
2. 50-0727
WARNING! FLYING OBJECTS



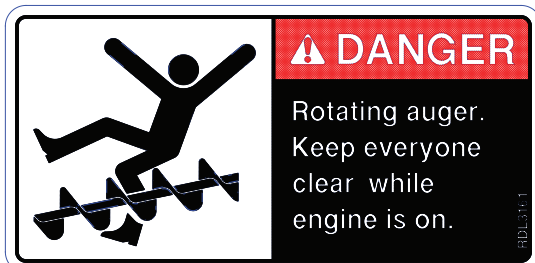
3. 50-0737
WARNING! PINCH POINT



5. 50-010017
WARNING! READ MANUAL



7. RDL3131
RED REFLECTIVE MARKER



9. RDL3161
DANGER! ROTATING AUGER



10. RDL3163
DANGER! ROTATING FAN

INSTALLATION & SET-UP

WARNING! READ MANUAL PRIOR TO INSTALLATION



Improper installation, operation, or maintenance of this equipment could result in serious injury or death. Operators and maintenance personnel should read this manual, as well as all manuals related to this equipment and the prime mover thoroughly before beginning installation, operation, or maintenance. **FOLLOW ALL SAFETY INSTRUCTIONS IN THIS MANUAL AND THE PRIME MOVER'S MANUAL(S).**

1. Place this product on a firm, level surface that is large enough to safely accommodate this product, your prime mover and all workers involved in the mounting process.
2. Refer to the operator's manual(s) for your prime mover, loader, and quick-attach and follow the mounting instructions contained therein.
3. Carefully raise the loader and cycle the tilt cylinders to check clearances and to verify that all mounting procedures have been successfully completed.

IMPORTANT Lubricate all grease fittings before connecting this product to your prime mover's hydraulic system. Refer to **HYDRAULIC SNOW BLOWER MAINTENANCE** and follow the instructions

ELECTRIC ACTUATOR AND WIRING HARNESS INSTALLATION

MATERIALS NEEDED: Nylon cable ties

1. Park your prime mover on a level surface with this product properly attached.
2. Place your prime mover's transmission in "Park" and engage the parking brake.
3. Lower this product onto the level surface.
4. Shut off your prime movers engine, remove the starter key, wait for all moving parts to come to a stop, and relieve all pressure in the hydraulic lines.
5. Remove the shipping material holding the top of the electric actuator to the chute and remove the bolt and nut from the deflector's actuator connection point. Secure the top of the actuator to the deflector using that bolt and nut.

(For units that are plugged in directly to the battery, continue with steps 6 thru 16.)

6. Attach the control box to the left side screen of your prime mover's roll-over protective structure (ROPS). Use the magnet on back of the control box to secure the control box so that the box is flat against the screen, the toggle switches are on the top, and the wiring harness cables are on the bottom.

WARNING! Failure to obey the following procedures could result in death or serious injury.



- Before doing any work on your prime mover's battery, read and understand all prime mover instructions and safety signs for your prime mover's electrical system. Pay special attention to hazard avoidance and remedial action related to explosive gas and acid.

INSTALLATION & SET-UP

CAUTION! Failure to obey the following procedures may result in personal injury.



- To avoid electrical shock during the wiring harness installation, remove the ground cable from the battery of your prime mover.

7. Remove the ground cable from the negative (-) post of your prime mover's battery.
8. Remove the nut from the **POSITIVE (+)** cable clamp on the battery and slide the **RED** wire ring terminal from the 9" wiring harness cable over the positive (+) cable clamp bolt. Secure the ring terminal with the nut.
9. Remove the nut from the **NEGATIVE (-)** cable clamp on the ground cable and slide the **BLACK** wire ring terminal from the 6' wiring harness cable over the negative (-) cable clamp bolt.
10. Reinstall the ground cable on the negative post of the battery and secure the ring terminal and the ground cable with the nut removed in the previous step.
11. Secure the 9' wiring harness cable from the battery to the control box with your nylon cable ties.
12. Feed the 16' wiring harness cable:
 - a) back to the left-rear area of your prime mover,
 - b) past the loader arm's rear hinge point by following the hydraulic hoses where possible, and
 - c) down the loader arm following the hydraulic lines.
13. Use your nylon cable ties to secure the 16' cable's female connector to the hydraulic lines next to the auxiliary hydraulic quick couplers.
14. Straighten the 16' cable and use your cable ties to secure the cable to the hydraulic lines back to the loader arm hinge point.
15. Allow sufficient slack in the cable at the hinge point to provide for a full range of motion of the loader arms. Use your nylon cable ties to secure the cable to the loader frame below the hinge point and back to the control box.
16. Connect the male connector on the actuator cable to the female connector on the loader arm.

HYDRAULIC SNOW BLOWER HYDRAULIC CONNECTION



READ AND UNDERSTAND ALL SAFETY STATEMENTS

Read all safety decals and safety statements in all manuals before beginning any Snow Blower hydraulic connection. Know and obey all OSHA regulations, local laws, and other professional guidelines for your operation. Know and follow good work practices when assembling, maintaining, repairing, mounting, removing, or operating this equipment.

1. Disconnect the hydraulic hose quick couplers from one another and attach the quick couplers to your prime mover as per the instructions in your prime mover's operator's manual. (Also see [Hydraulic Hose Connections](#) in the SERVICE section.)
2. Carefully raise the loader and cycle the tilt cylinders to check hose clearances and to check for any interference. Operate the chute and deflector on this product to make the same checks.
3. Cycle the hydraulic cylinder(s) on this product several times from fully retracted to fully extended until all air has been completely removed from the cylinder(s).

WARNING! Do not lock the auxiliary hydraulics of your prime mover in the "ON" position. Failure to obey this warning could result in death or serious injury.



INSTALLATION & SET-UP



READ AND UNDERSTAND ALL SAFETY STATEMENTS

Read all safety decals and safety statements in all manuals before beginning any Snow Blower setup. Know and obey all OSHA regulations, local laws, and other professional guidelines for your operation. Know and follow good work practices when assembling, maintaining, repairing, mounting, removing, or operating this equipment.

SKID SHOE ADJUSTMENT

Determine what type of surface is beneath the snow where your Hydraulic Snow Blower is being operated.

- If the surface is hard and smooth, like concrete or asphalt, the skid shoe placement as shipped from the factory (i.e. in their highest position) is correct.
- If the surface is soft or uneven, then a lower position should be used.

Changing the position of the skid shoes should be performed as follows:

1. Park your prime mover on a level surface with this product properly attached.
2. Place your prime mover's transmission in "Park" and engage the parking brake.
3. Lower this product's cutting edge onto wood or steel blocking that is adequate to safely hold the base of the skid shoes 2.5" to 3" off of the level surface OR tilt the snow blower forward (keeping the loader arms locked to the attachment mounting plate), holding the skid shoes 2.5" to 3" off the ground.
4. Shut off your prime mover's engine, remove the starter key, wait for all moving parts to come to a stop, and relieve all pressure in the hydraulic lines.

For the standard flow model (LAF6748):

5. Loosen the two nuts and remove the two bolts that secure one of the skid shoes.
6. Lower the skid shoe 1" or 2", which ever is appropriate for the surface beneath the snow, and re-secure the skid shoe with the two bolts and nuts.
7. Repeat for the other skid shoe.

For the standard flow models (11005, 11006, 11008 and 11007) and the high flow models (LAF6774, 11009, LAF6786, and LAF6798):

5. Remove the lynch pin that secures the skid shoe.
6. Adjust the positioning and/or quantity of the machinery bushings to raise or lower the skid shoe. Re-secure the skid shoe with the lynch pin at the desired height.
7. Repeat for the other skid shoe.

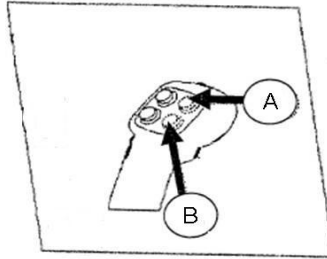
OPERATION

JOY STICK ILLUSTRATIONS

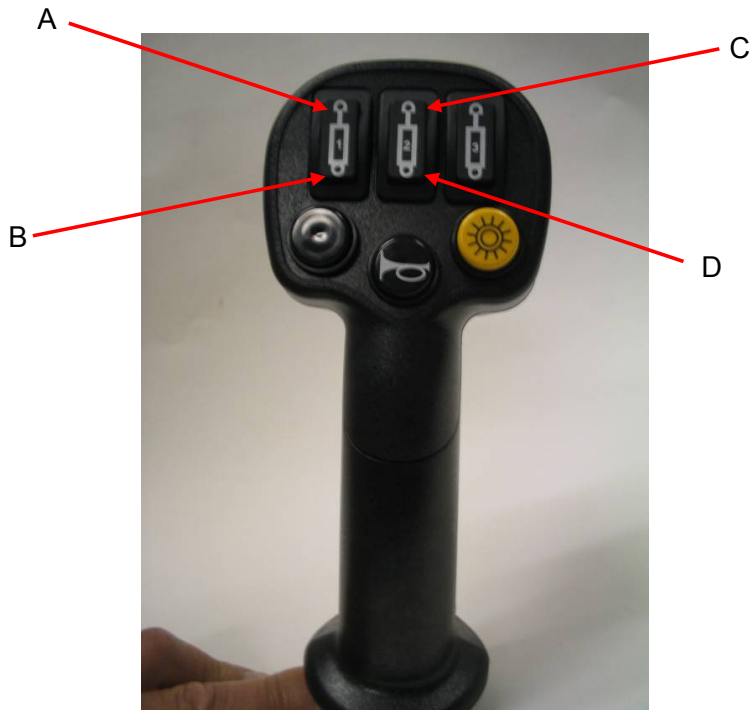
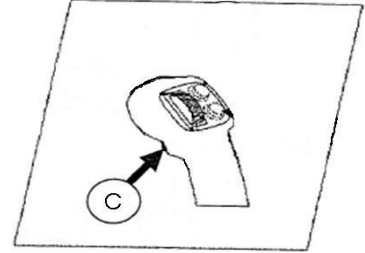
Caterpillar Joy Stick

Deflector UP: Button A
Deflector DOWN: Button B
Chute Rotation RIGHT: Button C
Chute Rotation LEFT: Button D

LEFT JOYSTICK



RIGHT JOYSTICK

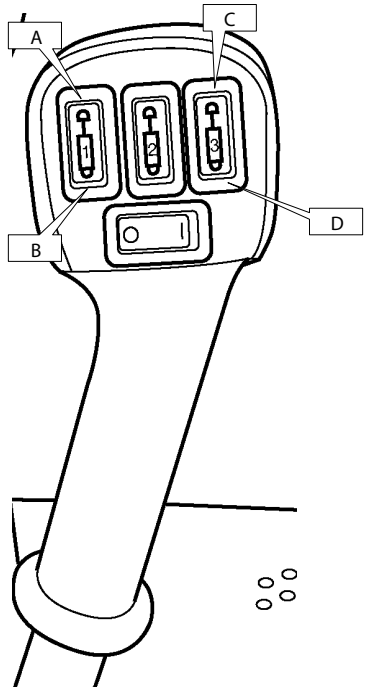


Gehl Joy Stick

Deflector UP: Button A
Deflector DOWN: Button B
Chute Rotation RIGHT: Button C
Chute Rotation LEFT: Button D

OPERATION

JOY STICK ILLUSTRATIONS

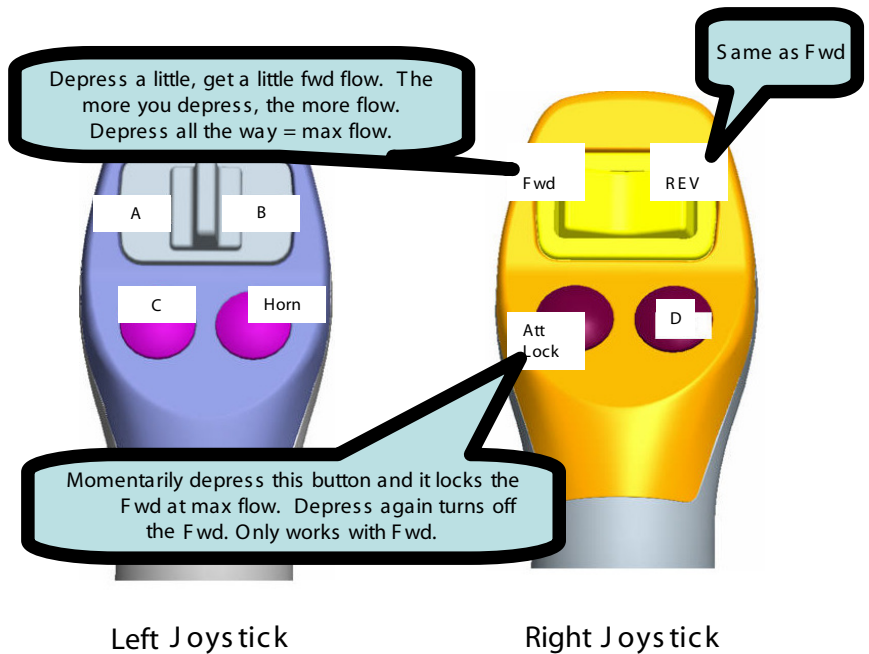


Case/New Holland Joy Stick

- Deflector UP: Button A
- Deflector DOWN: Button B
- Chute Rotation RIGHT: Button C
- Chute Rotation LEFT: Button D

Komatsu Joy Stick

- Deflector UP: Button A
- Deflector DOWN: Button B
- Chute Rotation RIGHT: Button C
- Chute Rotation LEFT: Button D



OPERATION

Intended Use

This snow blower has been designed and built to push loose snow . Use in any other way is considered contrary to the intended use. Compliance with and strict adherence to operation, service and repair conditions as specified by the manufacturer, are also essential elements



READ AND UNDERSTAND ALL SAFETY STATEMENTS

Read all safety decals and safety statements in all manuals prior to operating or working on this equipment. Know and obey all OSHA regulations, local laws, and other professional guidelines for your operation. Know and follow good work practices when assembling, maintaining, repairing, mounting, removing, or operating this equipment.

DANGER!



Failure to obey the following procedures WILL result in death or serious injury.

- Never allow anyone to reach into, kick into, or otherwise come in contact with a rotating auger or with a non-rotating clogged auger. The auger can crush and/or dismember. Keep everyone clear of the auger until the prime mover engine is off and the hydraulic pressure has been relieved.
- Never allow anyone to reach into the chute, force objects (i.e. bars, poles, etc.) down the chute, kick into the fan, or otherwise come in contact with a rotating fan or with a non-rotating clogged fan. The fan can throw objects at a lethal speed and can dismember. Keep everyone clear of the fan until the prime mover engine is off and the hydraulic pressure has been relieved.

WARNING!



Failure to obey the following procedures could result in death or serious injury.

- Never place any object (i.e. bar, pole, stick, etc.) down the chute until the prime mover engine is off and the hydraulic pressure has been relieved.
- Do not operate this product until all others are clear of the entire discharge area. Foreign objects and pieces of ice are generally thrown farther than snow. High Flow Snow Blowers are capable of throwing material up to 45 feet.
- Do not operate this product when blowing or thrown snow restricts visibility.
- Do not lock the auxiliary hydraulics in the "ON" position.
- Never lift this product (a.) above the operator's eye level or (b.) to a height where visibility is obstructed, whichever is lower.

CAUTION!



Failure to obey the following procedures may result in personal injury.

- Be aware that turning off the power unit key does not cut the power to the winch or to the actuator. With the switches for these devices being powered 100% of the time, care must be taken to not engage these switches:
 - a) Accidentally at any time, especially when entering or leaving the prime mover operator's position, or
 - b) When others are working on or near the actuator, the deflector, the winch, the chute, or any other part of this product that could cause personal injury if the switches are engaged.

1. Try to remove snow as soon as possible after the snow falls; snow becomes more compact (and more difficult to throw) the longer it lies on the ground.

OPERATION

2. To maximize the snow moving capabilities, try to remove snow before the accumulation reaches 12".

NOTICE



Placing the loader arm hydraulics in the float position decreases the prime mover's capability to provide the desired hydraulic flow and pressure to your snow blower's motors. Snow throwing performance will therefore be reduced.

READ AND UNDERSTAND ALL SAFETY STATEMENTS

Read all safety decals and safety statements in all manuals prior to operating or working on this equipment. Know and obey all OSHA regulations, local laws, and other professional guidelines for your operation. Know and follow good work practices when assembling, maintaining, repairing, mounting, removing, or operating this equipment.

3. Always rotate the chute and adjust the deflector so that the thrown snow is directed into open areas.

IMPORTANT

- Holding the toggle switches in the powered position after the actuator has reached the end of that device's cycle of movement, and/or
- Applying force on the deflector from any source, other than blown snow, that will cause the deflector to either compress or extend the deflector's actuator, and/or
- Using your Snow Blower as a snow "plow" **CAN result in damage to this product and WILL void all FFC warranties.**

4. Never direct the discharge at buildings, automobiles, trees, or any other item that may be damaged by thrown snow.
5. When blowing snow, approach the snow with the wind at the operator's back whenever possible.
6. When clearing a large area, cut the first pass on the upwind side and work downwind.
7. If an excessive amount of snow is being pushed in front of the auger housing, **SLOW DOWN!!** Allow the auger and fan enough time to properly collect and throw the snow.
8. If a foreign object becomes wedged in the auger, the auxiliary hydraulics on the prime mover may be reversed to reverse the auger. Reversing the auger rotation may remove the obstruction.
9. If a foreign object becomes wedged in the fan:
 - a) Move to a level surface, place your prime mover's transmission in "Park" and engage the parking brake.
 - b) Lower this product onto the level surface.
 - c) Shut off your prime mover's engine, remove the starter key, wait for all moving parts to come to a stop, and relieve all pressure in the hydraulic lines.
 - d) Disconnect the hydraulic fittings from your prime mover and reconnect those fittings to each other.

OPERATION

Hydraulic Snow Blower Operation

CAUTION! Failure to obey the following procedures may result in personal injury.



- **Avoid pinch points and be aware of rotating parts when manually turning fan or auger.**
- e) The fan can then be manually turned in a reverse rotation, allowing the foreign object to be removed.
- f) Once the fan is free, reconnect the hydraulic fittings as per the instructions in the HYDRAULIC CONNECTION section of this manual.

General Storage:

Storage:

- Clean the unit thoroughly, removing all snow, dirt and grease.
- Inspect for visible signs of wear, breakage or damage. Order any parts required and make the necessary repairs to avoid delays upon removal from storage.
- Tighten loose nuts, capscrews and hydraulic connections.
- Coat exposed portions of the cylinder rods with grease.
- Lubricate grease fittings.
- Seal hydraulic system from contaminants and secure all hydraulic hoses off the ground to help prevent damage.
- Store unit in a dry and protected place. Leaving the unit outside will materially shorten its life.

Additional Precautions for Long Term Storage:

- Touch up all unpainted surfaces with paint to avoid rust.
- Inflate tires to recommended tire pressure.
- Fill fuel tank and hydraulic oil tank to maximum.
- Check antifreeze properties and drain fluids as appropriate.

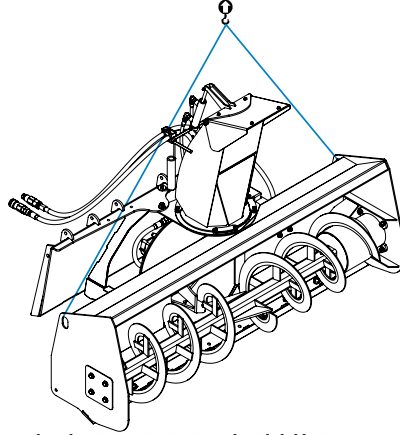
Removal from Storage:

- Remove cover.
- Wash unit and replace any damage and/or missing parts.
- Lubricate grease fittings.
- Check hydraulic hoses for damage and replace as necessary.


OPERATION

LIFT POINTS

Lifting points are identified by lifting decals where required. Lifting at other points is unsafe and can damage attachment. Do not attach lifting accessories around cylinders or in any way that may damage hoses or hydraulic components. See diagram:

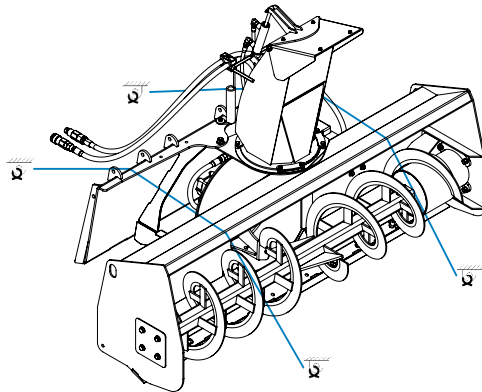


- Attach lifting accessories to unit at recommended lifting points.
- Bring lifting accessories together to a central lifting point.
- Lift gradually, maintaining the equilibrium of the unit.


WARNING!  **USE LIFTING ACCESSORIES (CHAINS, SLINGS, ROPES, SHACKLES AND ETC.) THAT ARE CAPABLE OF SUPPORTING THE SIZE AND WEIGHT OF YOUR ATTACHMENT. Secure all lifting accessories in such a way to prevent unintended disengagement. Failure to do so could result in the attachment falling and causing serious personal injury or death.**

TIE DOWN POINTS

Tie down points are identified by tie down decals where required. Securing to trailer at other points is unsafe and can damage attachment. Do not attach tie down accessories around cylinders or in any way that may damage hoses or hydraulic components. See diagram:



- Attach tie down accessories to unit as recommended.
- Check unit stability before transporting.

WARNING!  **VERIFY THAT ALL TIE DOWN ACCESSORIES (CHAINS, SLINGS, ROPES, SHACKLES AND ETC.) ARE CAPABLE OF MAINTAINING ATTACHMENT STABILITY DURING TRANSPORTING and are attached in such a way to prevent unintended disengagement or shifting of the unit. Failure to do so could result in serious personal injury or death.**

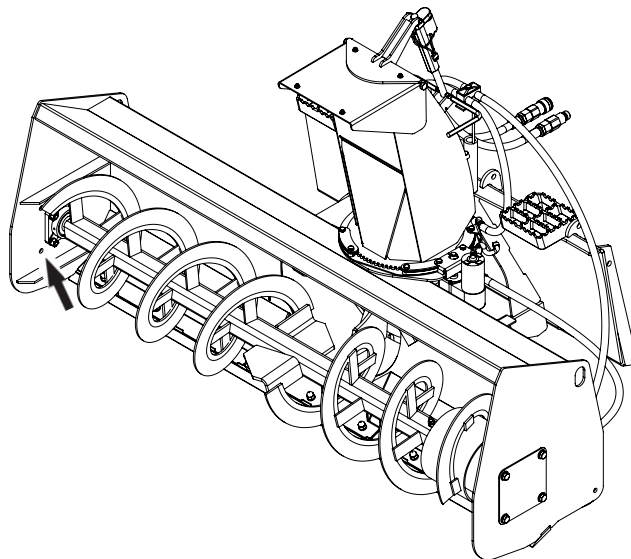
MAINTENANCE



READ AND UNDERSTAND ALL SAFETY STATEMENTS

Read all safety decals and safety statements in all manuals prior to operating or working on this equipment. Know and obey all OSHA regulations, local laws, and other professional guidelines for your operation. Know and follow good work practices when assembling, maintaining, repairing, mounting, removing, or operating this equipment.

Procedure	Before Each Use	Every 10 Hours
Check and tighten all hardware and fasteners	✓	
Tighten all hydraulic fittings and check for leaks	✓	
Check all safety decals that they are clean and legible	✓	
Replace any damaged and excessively worn parts	✓	
Make sure chute and deflector are not frozen	✓	
Grease all fittings as shown on parts illustration		✓



MAINTENANCE



READ AND UNDERSTAND ALL SAFETY STATEMENTS

Read all safety decals and safety statements in all manuals prior to operating or working on this equipment. Know and obey all OSHA regulations, local laws, and other professional guidelines for your operation. Know and follow good work practices when assembling, maintaining, repairing, mounting, removing, or operating this equipment.

REPLACING THE CUTTING EDGE

1. Park your prime mover on a level surface with this product properly attached.
2. Place your prime mover's transmission in "Park" and engage the parking brake.
3. Lower this product's skid shoes onto wood or steel blocking that is adequate to safely hold the base of the skid shoes 2.5" to 3" off the level surface.
4. Shut off your prime mover's engine, remove the starter key, wait for all moving parts to come to a stop, and relieve all pressure in the hydraulic lines.
5. Remove all the acorn nuts, lock washers, and bolts except the one on each end of the cutting edge.
6. On one end of the cutting edge, remove the remaining acorn nut and lower the cutting edge to the work surface. Repeat for other end.
7. Properly dispose of the old cutting edge and install a new cutting edge by reversing the procedures in steps 6 and 5.

OTHER MAINTENANCE RECOMMENDATIONS

FOR STANDARD FLOW MODEL (LAF6748) ONLY:

Auger Motor Replacement: When installing an auger motor, loosely install all four of the 8" bolts and fasteners. Fully tighten the three locknuts on the bolts inside the auger motor cover. Snug up the fourth bolt with the lock washer and nut, but do not over tighten.

IMPORTANT

**Over tightening the fourth bolt
CAN result in damage to this product and
WILL void all FFC warranties.**

FOR ALL STANDARD FLOW MODELS:

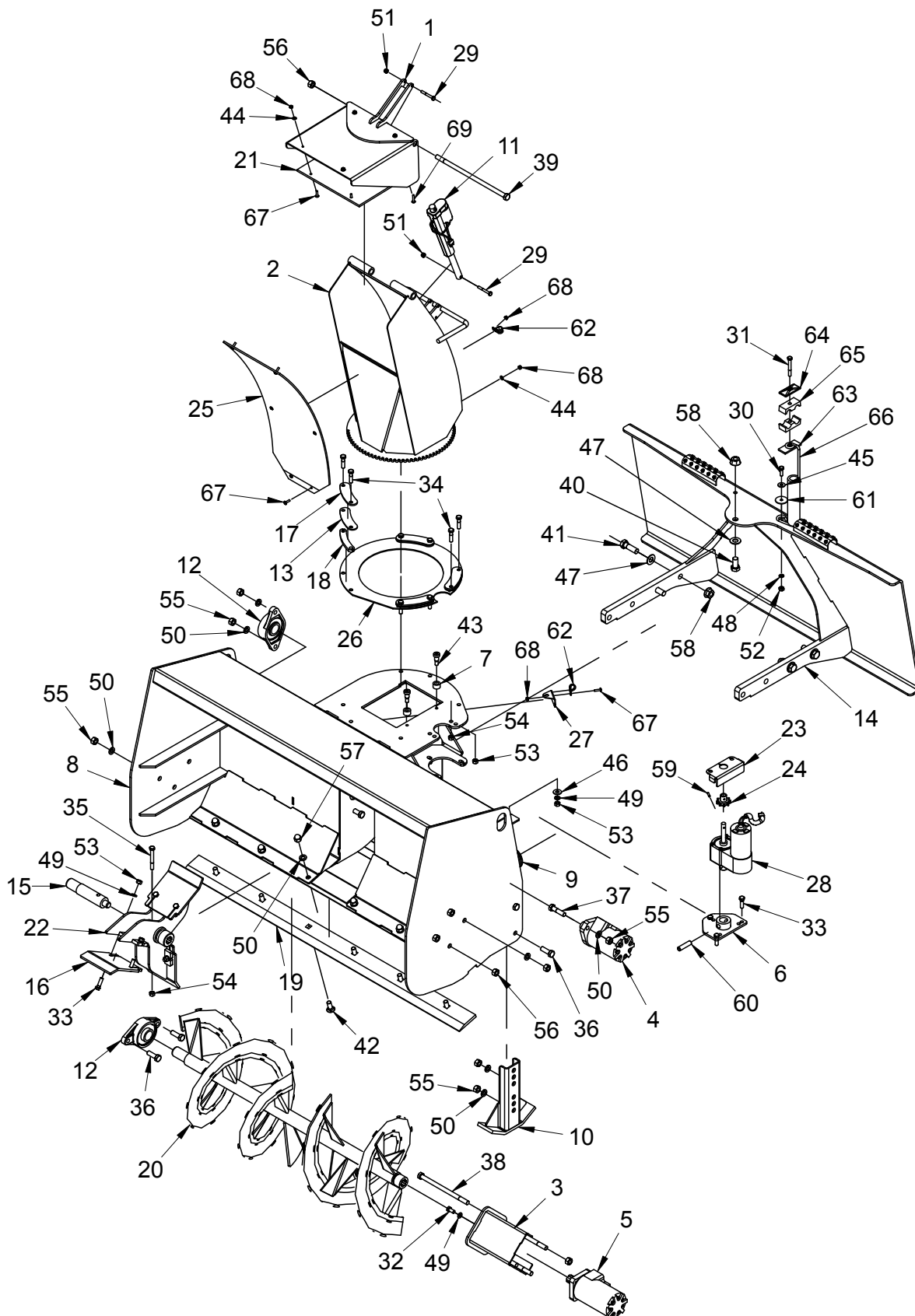
Hydraulic Hose Connections: To make sure that the fan and auger motors' rotation is correct, the hose path must be: (a) from the prime mover to the top port of the fan motor, (b) from the bottom port of the fan motor to the top port of the auger motor, and (c) from the bottom port of the auger motor to the prime mover. (See PART ILLUSTRATION (Standard) section for the check valve location.)

TROUBLESHOOTING

Problem	Possible Cause	Possible Solution
Auger will not rotate	Hoses installed incorrectly	Switch quick coupler fittings
	Hydraulic valve on skid steer not engaged	See skid steer operator's manual for auxiliary operation procedure
	Worn, damaged, insufficient or inadequate pump	Repair or replace hydraulic pump
	Insufficient oil in system	Service the skid steer hydraulic reservoir, see skid steer operator's manual
	Hose ends not completely engaged	Check hose couplings and engage properly
	Air in hydraulic lines	Cycle skid steer auxiliary system several times to remove air from lines
	Obstruction in hydraulic lines	Replace obstructed or damaged line
Chute will not rotate/angle	Hydraulic valve on skid steer not engaged	See skid steer operator's manual for auxiliary hydraulic operation procedure
	Worn, damaged, insufficient or inadequate pump	Repair or replace hydraulic pump
	Insufficient oil in system	Service the skid steer hydraulic reservoir, see skid steer operator's manual
	Hose ends not completely engaged	Hose ends not completely engaged
	Air in hydraulic lines	Cycle skid steer auxiliary system several times to remove air from lines
	Obstruction in hydraulic lines	Replace obstructed or damaged line
	Electrical failure	See skid steer operator's manual
Oil leaks	Worn or damaged seal	Replace leaking seal
	Loose or damaged hoses	Replace damaged hoses and secure loose hoses
	Loose or damaged connections	Replace damaged hose connections and tighten loose fittings

Notes

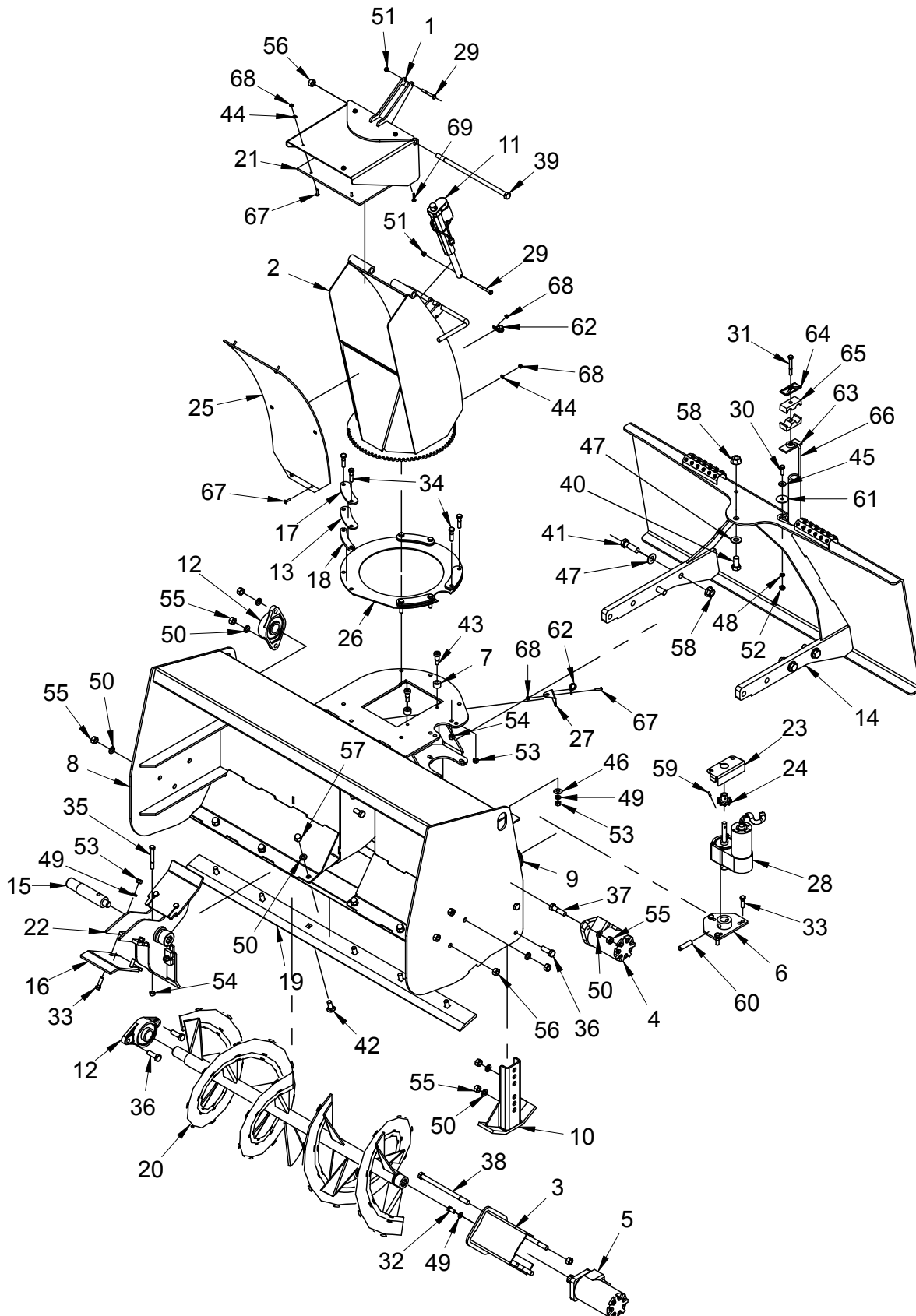
48" STANDARD PARTS LIST



48" STANDARD PARTS LIST

ITEM	QTY.	LAF6748 48" "A" Motor	DESCRIPTION
1	1	13-51119	Deflector
2	1	13-51136	Chute
3	1	13-52434	Motor Mount
4	1	LAF4579	Motor-Fan T-3.0 - 158- 2816
5	1	LAF4588	Motor T-14.9 - 158-1062
6	1	LAF6504	Actuator Mount
7	2	LAF6505	Roller Sleeve
8	1	LAF6509	Main Housing
9	1	LAF6520	Auger Hose Hole Liner
10	2	LAF6521	Skid Shoe
11	1	LAF6531	Electric Actuator
12	2	LAF6532	1.25" Dia 2-Bolt Flange Bearing
13	4	LAF6533	Rotation Clip Pad
14	1	LAF6535	Loader Attachment Plate
15	1	LAF6540	Fan Shaft
16	3	LAF6541	Fan Paddle
17	4	LAF6543	Chute Rotation Clip
18	4	LAF6545	Chute Rotation Spacer
19	1	LAF6547	Single Bevel Edge (.38" x 3")
20	1	LAF6550	Auger
21	1	LAF6551	Deflector Liner
22	1	LAF6552	Three Blade Fan
23	1	LAF6596	Gear Cover
24	1	LAF6597	Chute Drive Sprocket
25	1	LAF6598	Chute Back Plate Liner
26	1	LAF6712	Chute Rotation Pad
27	1	LAF6719	Relay Clip for Actuator Bracket
28	1	LAF6721	Rotary Actuator 12 Volt DC
29	2	07-3022	Grade 8 Hex Head Cap Screw .25" x 2"
30	1	RHW1105	Grade 5 Hex Head Cap Screw .31" x 1"
31	1	RHW1112	Grade 5 Hex Head Cap Screw .31" x 2.5"
32	4	P100603	Grade 5 Hex Head Cap Screw .38" x .75"
33	9	P100605	Grade 5 Hex Head Cap Screw .38" x 1.25"
34	8	P100606	Grade 5 Hex Head Cap Screw .38" x 1.5"
35	1	RHW1215	Grade 5 Hex Head Cap Screw .38" x 3"

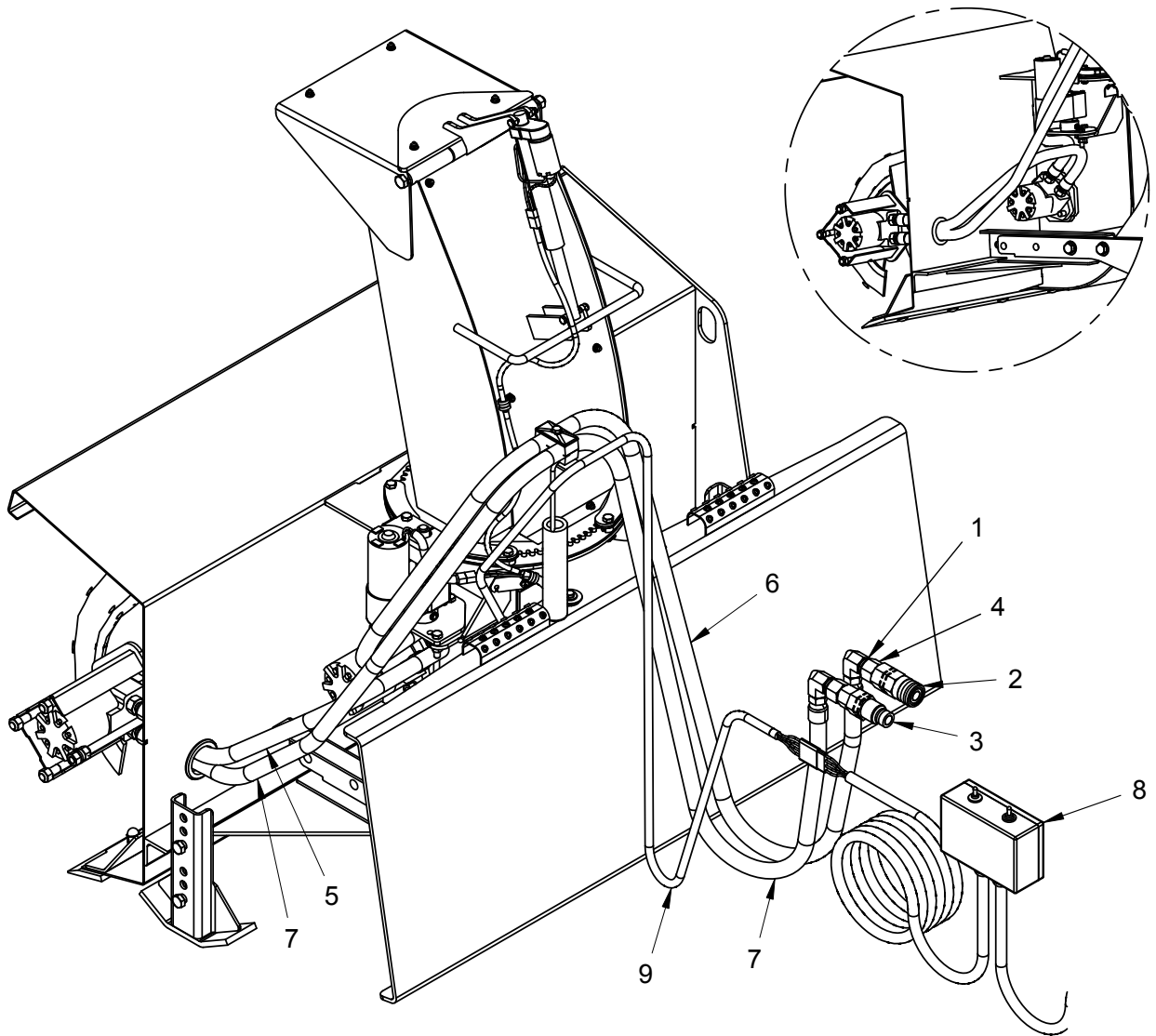
48" STANDARD PARTS LIST



48" STANDARD PARTS LIST

ITEM	QTY.	LAF6748 48" "A" Motor	DESCRIPTION
36	8	P100806	Grade 5 Hex Head Cap Screw .5" x 1.5"
37	2	RHW1407	Grade 5 Hex Head Cap Screw .5" x 2"
38	4	RHW1423	Grade 5 Hex Head Cap Screw .5" x 8"
39	1	RHW1430	Grade 5 Hex Head Cap Screw .5" x 12"
40	1	RHW1601	Grade 5 Hex Head Cap Screw .63" x 1.25"
41	4	RHW1604	Grade 5 Hex Head Cap Screw .63" x 2"
42	6	RHW2404	Grade 5 Carriage Bolt .5" x 1.25"
43	2	RHW4105	Allen Head Shoulder Screw .5" x .63" with .38"-16 x .63"
44	10	RHW5031	Grade 2 Flat Washer .19" SAE
45	1	RHW5162	Grade 5 Flat Washer .31" USS
46	3	RHW5262	Grade 5 Flat Washer .38" USS
47	5	RHW5632	Grade 5 Flat Washer .63" SAE
48	1	P851105	Grade 5 Lock Washer .31"
49	13	P851106	Grade 5 Lock Washer .38"
50	17	P851108	Grade 5 Lock Washer .5"
51	2	P158003	Grade 5 Nylock Nut .25"
52	1	RHW7101	Grade 5 Hex Nut .31"
53	11	RHW7201	Grade 5 Hex Nut .38"
54	9	RHW7203	Grade 5 Lock Nut .38"
55	12	RHW7401	Grade 5 Hex Nut .5"
56	4	RHW7403	Grade 5 Lock Nut .5"
57	6	RHW7408	Grade 2 Acorn Nut .5"
58	5	RHW7607	Grade 8 Top Lock Flange Nut .63"
59	1	RHW8032	Roll Pin .19" x .75"
60	1	RHW8034	Roll Pin .5" x 2"
61	1	RHW8098	Grade 2 Fender Washer .31" ID 1.5" OD
62	2	07-1177	Loop Clamp .5"
63	1	RHW8613	Weld Plate .88" OD
64	1	RHW8614	Hose Clamp Cover Plate .88" OD
65	2	RHW8616	Hose Cradle (2) .88" OD Hoses
66	1	RHW8618	Hose Spring
67	9	RHW9001	Grade 5 Truss Head Machine Screw .19" x .75"
68	11	RHW9002	Grade 2 Lock Nut .19"
69	2	RHW9006	Grade 5 Truss Head Machine Screw .19" x 1"

48" STANDARD HYDRAULIC/ELECTRIC COMPONENTS

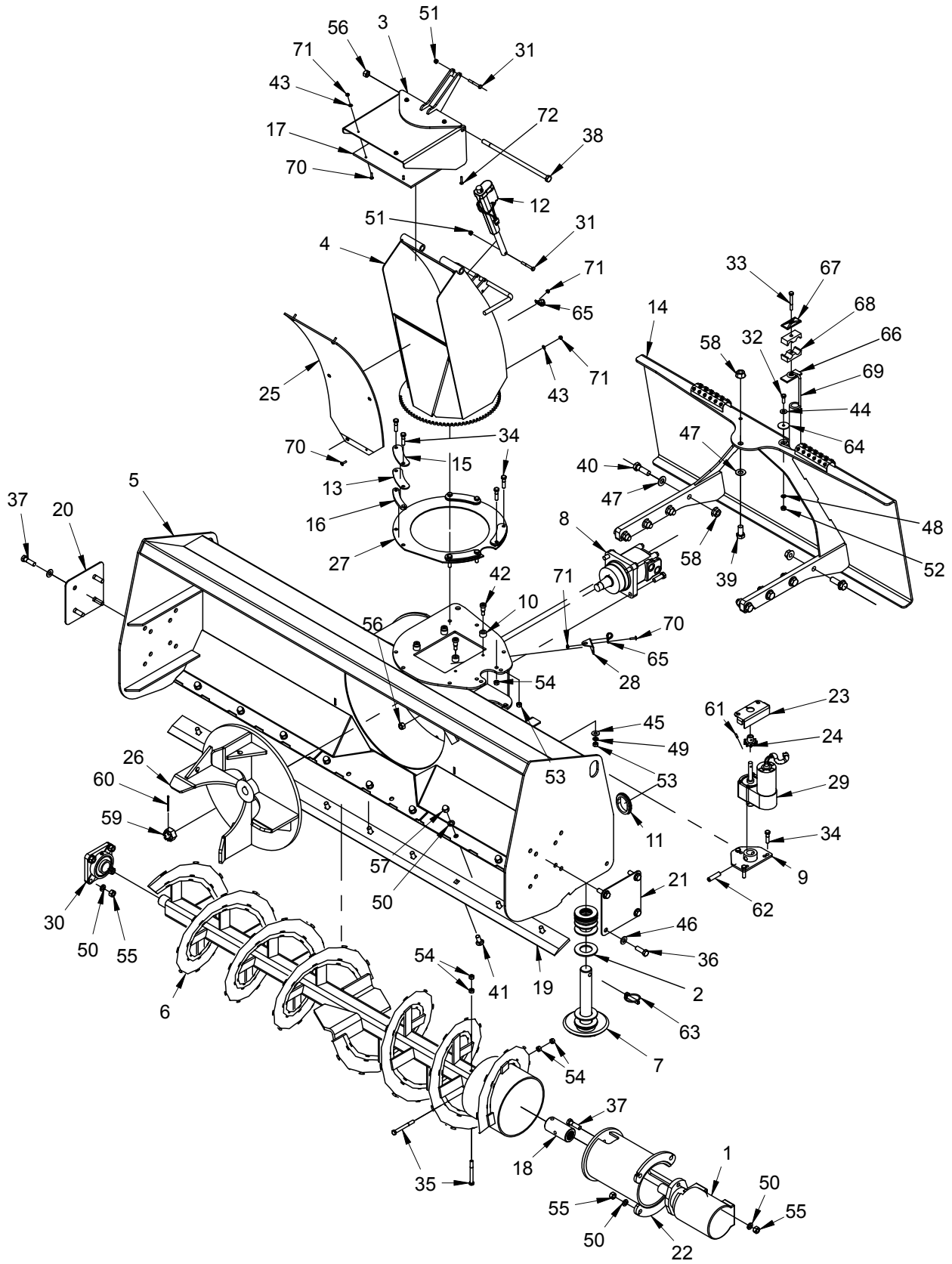


ITEM	QTY.	PART NUMBER	DESCRIPTION
*1	2	03-4164	Hydraulic Elbow 90° 10FB-10MB (not required for all models)
*2	1	03-3859	Hydraulic Coupler Female 12 FF 12FB
*3	1	03-3860	Hydraulic Coupler Male 12 FF 12FB
*4	2	03-4618	Hydraulic Adapter 10FB-12MB (not required for all models)
5	1	LAF4315	Hydraulic Hose .5" x 36" 10MB-10MBSW
6	1	LAF4317	Hydraulic Hose .5" x 84" 10MB-10MB
7	1	LAF4345	Hydraulic Hose .5" x 108" 10MB-10MB
*8	1	LAF6558	Wiring Harness
*9	1	LAF6720	Actuator Cable

*ITEMS may vary per Prime Mover -- Contact FFC for correct item.

**PARTS LISTS FOR
STANDARD BLOWERS
11005, 11006, 11008, & 11007**

STANDARD PARTS LIST

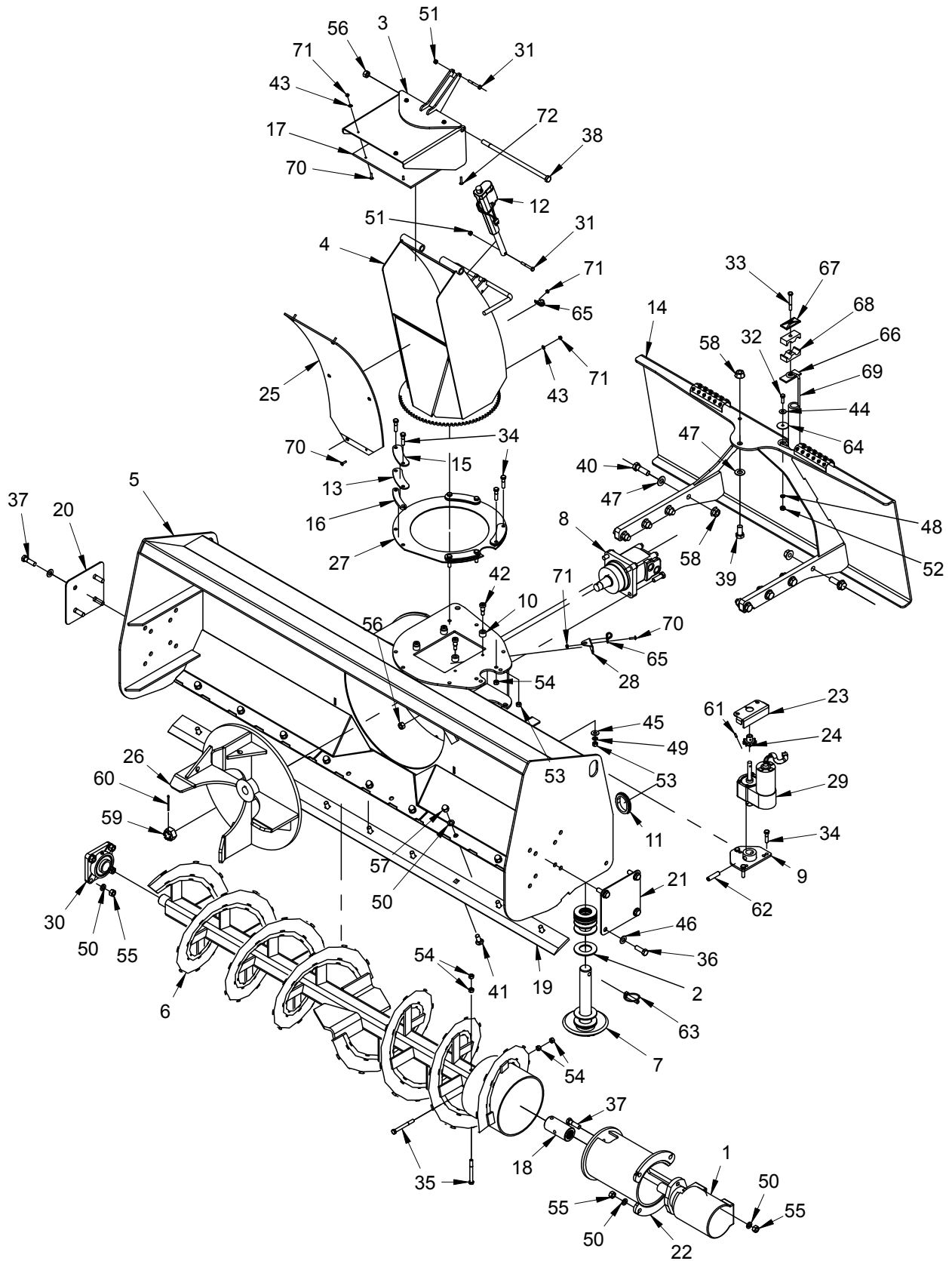


STANDARD PARTS LIST

ITEM	QTY.	11005 60" 'C' 'D' or 'E' Motor	11006 72" 'D' or 'E' Motor	11008 78" 'D' or 'E' Motor	11007 84" 'D' or 'E' Motor	DESCRIPTION
1	1	LAF9915 (C) or (D) LAF4798 (E)	LAF9915 (D) LAF4798 (E)	LAF9915 (D) LAF4798 (E)	LAF9915 (D) LAF4798 (E)	Auger Motor 17.1 Parker TF
2	22				07-10126	Grade 5 Flat Washer 1.63" SAE
3	1				13-51119	Deflector
4	1				13-51136	Chute
5	1	13-51802	13-51785	13-52900	13-51803	Main Housing
6	1	13-51790	13-51789	13-52905	13-51791	Auger
7	2				LAF1485	Skid Shoe
8	1	03-10054 (C) or (D) or (E)	(D) or (E)	(D) or (E)	LAF4576 (D) or LAF4575 (E)	Fan Motor: Motor C-Ross 4.0 Wheel MP Ser Motor D-2000 4.9 Wheel 105-1376 Motor E-2000 6.2 Wheel 105-1375
9	1				LAF6504	Actuator Mount
10	4				LAF6505	Roller Sleeve
11	1				LAF6520	Auger Hose Hole Liner
12	1				LAF6531	Electric Actuator
13	4				LAF6533	Rotation Clip Pad
14	1				LAF6535	Loader Attachment Plate
15	4				LAF6543	Chute Rotation Clip
16	4				LAF6545	Chute Rotation Spacer
17	1				LAF6551	Deflector Liner
18	1				LAF6567	Auger Sleeve
19	1	LAF6560	LAF6571	13-52909	LAF6583	Single Bevel Edge (.38" x 3")
20	1				LAF6579	End Plate Cap for Bearing
21	1				LAF6580	End Plate Cap for Motor
22	1				LAF6593	Motor Mount
23	1				LAF6596	Gear Cover
24	1				LAF6597	Chute Drive Sprocket
25	1				LAF6598	Chute Back Plate Liner
26	1				13-53311	Fan
27	1				LAF6712	Chute Rotation Pad
28	1				LAF6719	Relay Clip for Actuator Bracket
29	1				LAF6721	Rotary Actuator 12 Volt DC
30	1				LAF6808	Flange Mount Bearing 1-7/16 Id 4-bolt
31	2				07-3022	Grade 8 Hex Head Cap Screw .25" x 2"
32	1				RHW1105	Grade 5 Hex Head Cap Screw .31" x 1"
33	1				RHW1112	Grade 5 Hex Head Cap Screw .31" x 2.5"
34	11				P100606	Grade 5 Hex Head Cap Screw .38" x 1.5"

NOTE: All parts are the same as the 11007 except for those parts numbered under the other models.

STANDARD PARTS LIST

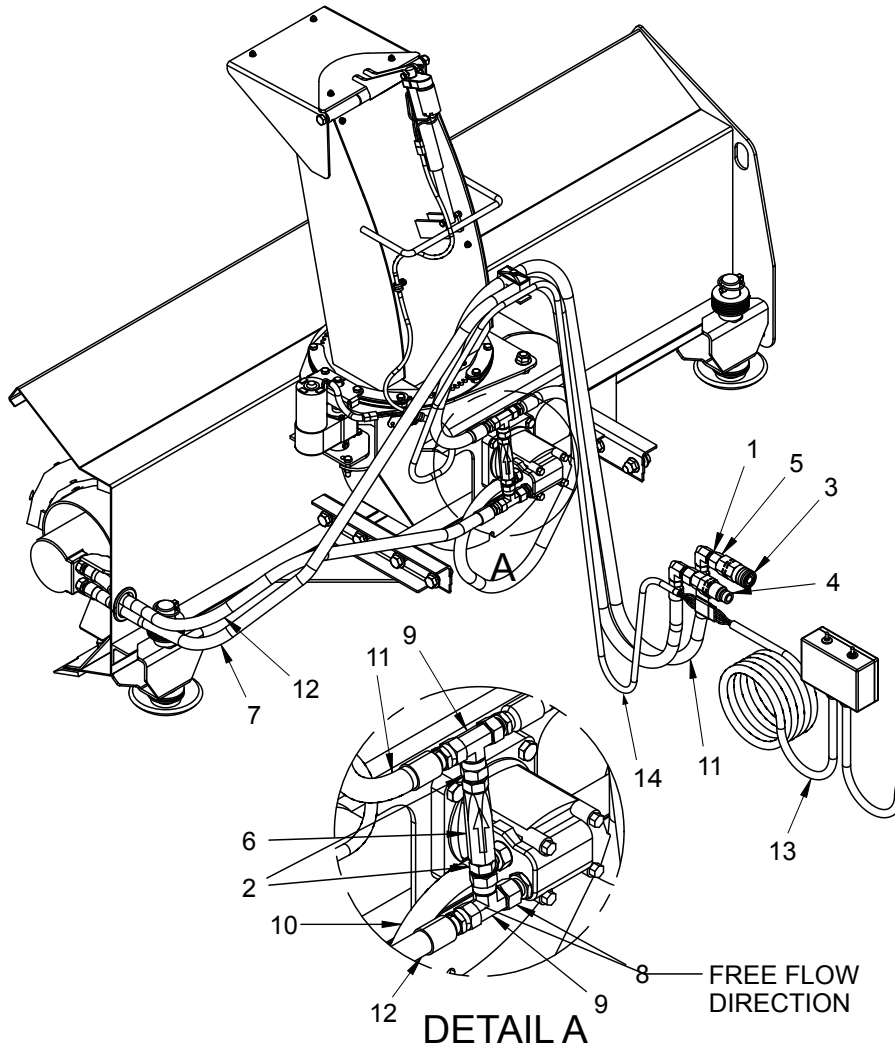


STANDARD PARTS LIST

ITEM	QTY.	11005 60" 'C' 'D' or 'E' Motor	11006 72" 'D' or 'E' Motor	11008 78" 'D' or 'E' Motor	11007 84" 'D' or 'E' Motor	DESCRIPTION
35	2				P100614	Grade 5 Hex Head Cap Screw .38" x 3.5"
36	8				P100806	Grade 5 Hex Head Cap Screw .5" x 1.5"
37	6				RHW1406	Grade 5 Hex Head Cap Screw .5" x 1.75"
38	1				RHW1430	Grade 5 Hex Head Cap Screw .5" x 12"
39	1				07-7714	Grade 5 Hex Head Cap Screw .63" x 1.50"
40	8				RHW1604	Grade 5 Hex Head Cap Screw .63" x 2"
41	varies	(8)	(9)	(10)	(11) RHW2404	Grade 5 Carriage Bolt .5" x 1.25"
42	4				RHW4105	Allen Head Shoulder Screw .5" x .63" with .38"-16 x .63"
43	10				RHW5031	Grade 2 Flat Washer .19" SAE
44	1				RHW5162	Grade 5 Flat Washer .31" USS
45	3				RHW5262	Grade 5 Flat Washer .38" USS
46	8				07-1763	Grade 8 Flat Washer .5" SAE Hardened
47	9				RHW5632	Grade 5 Flat Washer .63" SAE
48	1				P851105	Grade 5 Lock Washer .31"
49	3				P851106	Grade 5 Lock Washer .38"
50	varies	(18)	(19)	(20)	(21) P851108	Grade 5 Lock Washer .5"
51	2				P158003	Grade 5 Nylock Nut .25"
52	1				RHW7101	Grade 5 Hex Nut .31"
53	7				RHW7201	Grade 5 Hex Nut .38"
54	12				RHW7203	Grade 5 Lock Nut .38"
55	10				RHW7401	Grade 5 Hex Nut .5"
56	5				RHW7403	Grade 5 Lock Nut .5"
57	varies	(8)	(9)	(10)	(11) RHW7408	Grade 2 Acorn Nut .5"
58	9				RHW7607	Grade 8 Top Lock Flange Nut .63"
59	1				RHW7905	Castle Nut 1" x .5"
60	1				RHW8012	Grade 2 Cotter Pin 1/8" x 2"
61	1				RHW8032	Roll Pin .19" x .75"
62	1				RHW8034	Roll Pin .5" x 2"
63	2				RHW8064	Lynch Pin 7/16" x 1.63" Large Ring
64	1				RHW8098	Grade 2 Fender Washer .31" ID 1.5" OD
65	2				07-1177	Loop Clamp .5"
66	1				RHW8613	Weld Plate .88" OD
67	1				RHW8614	Hose Clamp Cover Plate .88" OD
68	2				RHW8616	Hose Cradle (2) .88" OD Hoses
69	1				RHW8618	Hose Spring
70	9				RHW9001	Grade 5 Truss Head Machine Screw .19" x .75"
71	11				RHW9002	Grade 2 Lock Nut .19"
72	2				RHW9006	Grade 5 Truss Head Machine Screw .19" x 1"

NOTE: All parts are the same as the 11007 except for those parts numbered under the other models.

STANDARD HYDRAULIC/ELECTRIC COMPONENTS

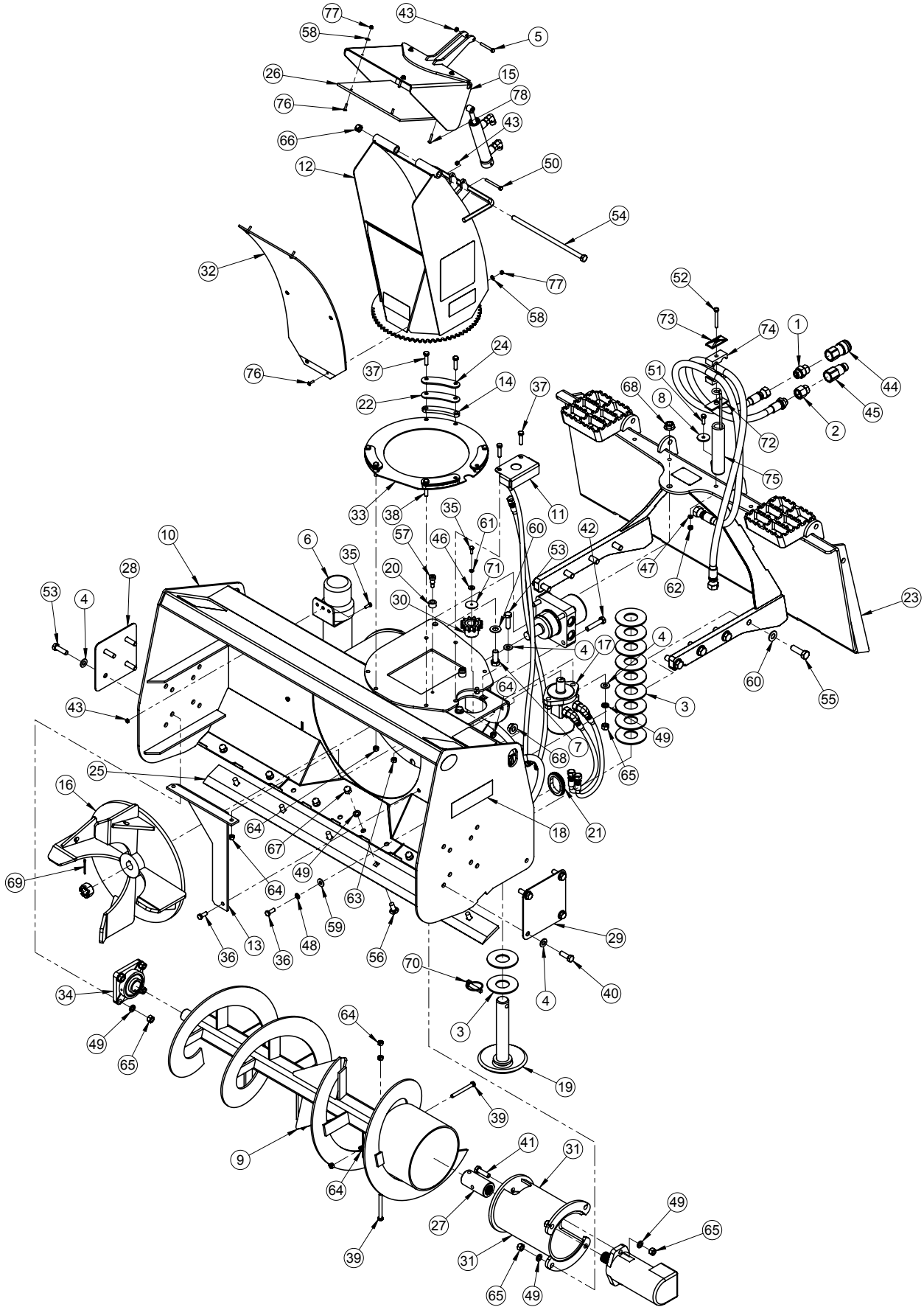


ITEM	QTY.	PART NUMBER	DESCRIPTION
*1	2	03-4164	Hydraulic Elbow 90° 10FB-10MB (not required for all models)
2	2	P276405	Fitting 8MB-10MJ
*3	1	03-3859	Hydraulic Coupler Female 12 FF 12FB
*4	1	03-3860	Hydraulic Coupler Male 12 FF 12FB
*5	2	03-4618	Hydraulic Adapter 10FB-12MB (not required for all models)
6	1	LAF4266	Check Valve 16 gpm, 3500 psi, 8FB ports
7	1	LAF4345	Hydraulic Hose .5" x 108" 10MB-10MB
8	1	LAF4404	Hydraulic Adapter 10MB-10FJ, Straight Swivel
9	2	LAF4422	Hydraulic Branch Tee 10MJ-10MJ-10FJX
10	1	LAF4540	Hydraulic Hose .5" x 34" 10MB-10FJ
11	1	LAF4552	Hydraulic Hose .5" x 84" 10MB-10FJ
12	1	LAF4744	Hydraulic Hose .5" x 48" 10MB-10FJ
*13	1	LAF6558	Wiring Harness
*14	1	LAF6720	Actuator Cable

*ITEMS may vary per Prime Mover -- Contact FFC for correct item.

PARTS LISTS FOR
STANDARD BLOWERS
11048, 11060, 11072, 11078 & 11084

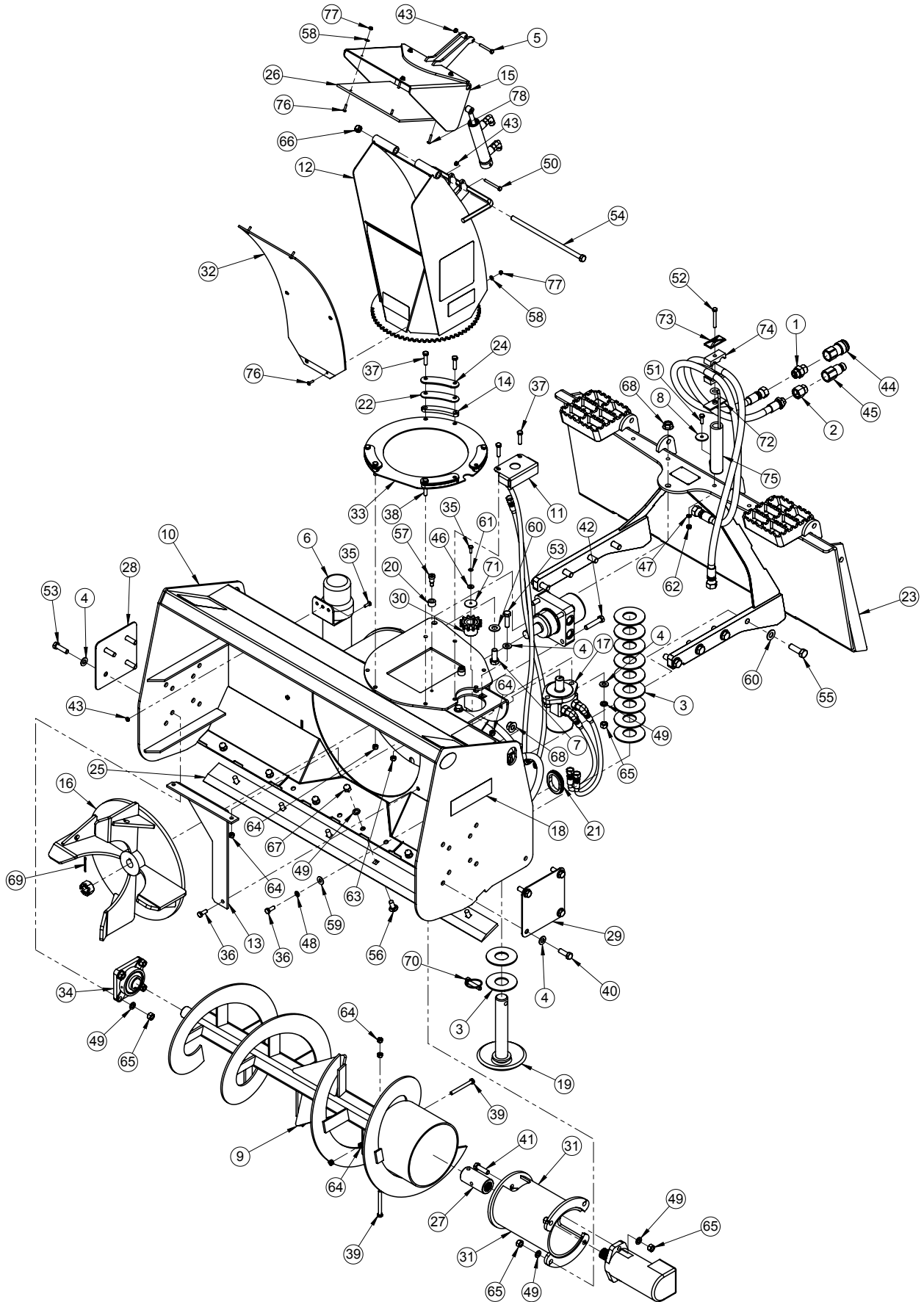
STANDARD PARTS LIST



STANDARD PARTS LIST

Item	Qty	11048 48"	11060 60"	11072 72"	11078 78"	11084 84"	Description
1	1					03-3180	Fitting, 10MF-12MB
2	1					03-4618	Fitting, 10FB-12MB
3	22					07-10126	Washer, Flat, 1 5/8 SAE, Gr5
4	12					07-1763	Washer, Flat, 1/2 SAE, Gr8
5	1					07-3022	Screw, HHC, Gr8, 1/4-20 x 2
6	1					07-6869	Manual Holder
7	1					07-7714	Screw, HHC, Gr5, 5/8-11 x 1 1/2
8	1					105840	Washer, Fender
9	1	13-17276	13-51790	13-51789	13-52905	13-51791	Weld, Auger, Standard
10	1	13-17290-48	13-17290-60	13-17290-72	13-17290-78	13-17290-84	Weld, Main Housing
11	1					13-17292	Cover, Gear
12	1					13-17294	Weld, Chute
13	1					13-17302	Plate, 7ga x 2.5 x 14.63
14	4					13-17487	Plate, Chute, Spacer
15	1					13-51119	Weld, Deflector
16	1					13-53311	Weld, Fan
17	1		28-10552 (A) 28-10549 (C) 28-10550 (D) 28-10551 (E)			28-10553 (D) 28-10554 (E)	Kit, Hydraulic Motor
18	1					28-10577	Assembly, Labels
19	2					LAF1485	Weld, Skid Shoe
20	2					LAF6505	Roller Sleeve
21	1					LAF6520	Grommet, Rubber, 2.88 x 2.13
22	4					LAF6533	Poly Rotation Clip Pad
23	1					LAF6535-0022	Weld, Back Plate
24	4					LAF6543	Clip, Rotation
25	1	LAF6547	LAF6560	LAF6571	13-52909	LAF6583	Edge
26	1					LAF6551	Liner, Deflector
27	1					LAF6567	Rod, Auger Sleeve
28	1					LAF6579	End, Plate Cap, for Bearing
29	1					LAF6580	Plate, End Cap
30	1					LAF6587	Weld, Sprocket
31	1					LAF6593	Weld, Motor Mount
32	1					LAF6598	Chute, Back Plate Liner
33	1					LAF6712	Chute, Rotation Pad
34	1					LAF6808	Flange Mount Bearing
35	3					P100403	Screw, HHC, 1/4-20 x 3/4, Gr5
36	5					P100604	Bolt, Hex, 3/8-16 x 1, Gr5
37	6					P100606	Bolt, Hex, 3/8 x 1 1/2, Gr5
38	2					P100608	Bolt, Hex, 3/8-16 x 2, Gr5
39	2					P100614	Bolt, Hex, 3/8 x 3 1/2, Gr5
40	4					P100806	Bolt, Hex, 1/2 x 1 1/2, Gr5
41	2					P100807	Bolt, Hex, 1/2-13 x 1 3/4, Gr5

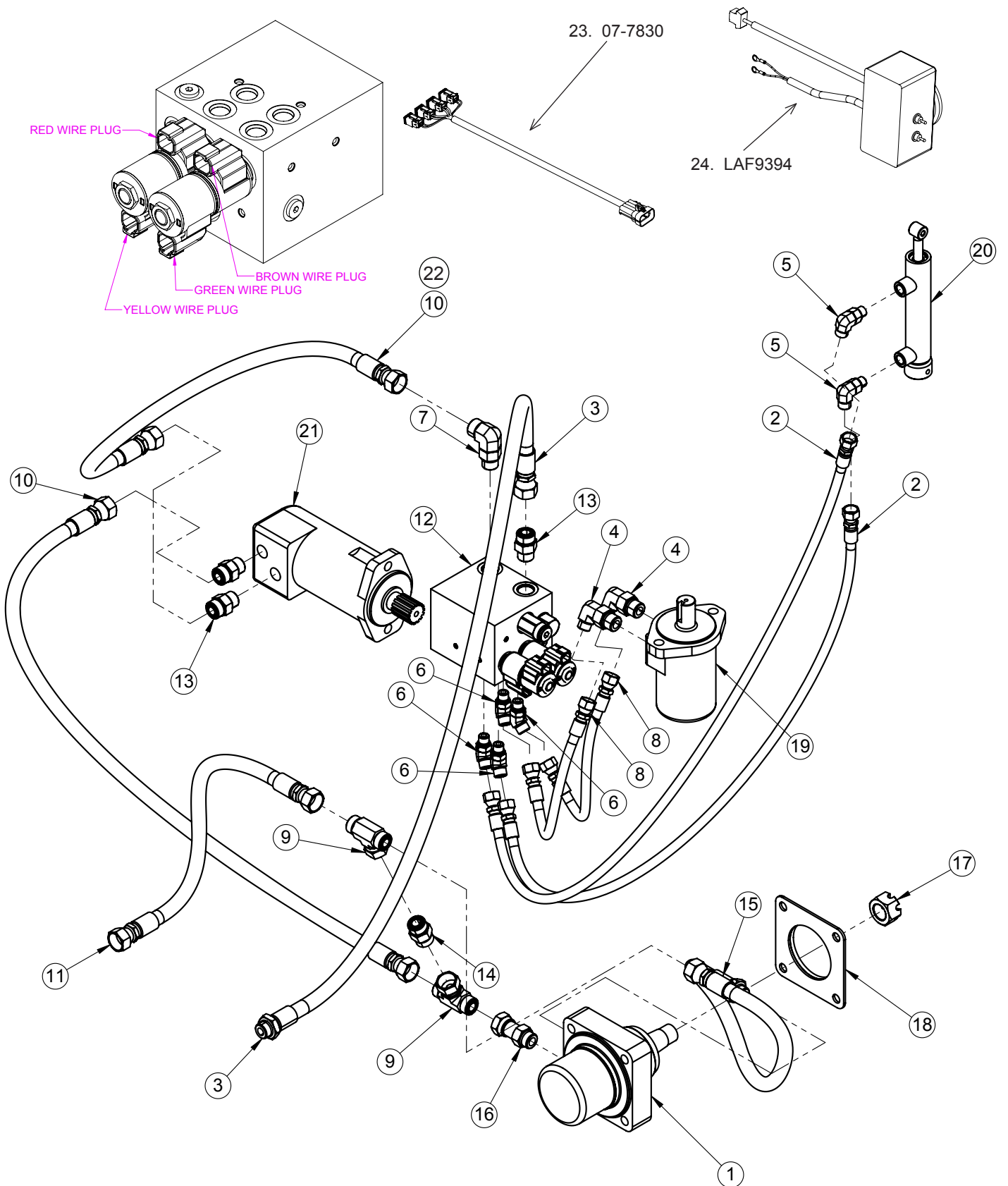
STANDARD PARTS LIST



STANDARD PARTS LIST

Item	Qty	11048 48"	11060 60"	11072 72"	11078 78"	11084 84"	Description
42	4					P100806 (D,E) P100810 (A,C)	Bolt, Hex, 1/2 x 1 1/2, Gr5 Bolt, Hex, 1/2 x 2 1/2, Gr5
43	4					P158003	Nut, 1/4, Elastic Lock
44	1					P272670	QD, 8FF, Female, 12FB
45	1					P272671	QD, 8FF, Male, 12FB
46	1					P850104	Washer, Flat, 1/4, Gr5
47	1					P851105	Washer, Lock, 5/16
48	4					P851106	Washer, Lock, 3/8
49	Varies	18	19	20	21	(22) P851108	Washer, Lock, 1/2
50	1					RHW1043	Screw, HHC, 1/4-20 x 2 1/2, Gr5
51	1					RHW1105	Screw, HHC, 5/16-18 x 1, Gr5
52	1					RHW1112	Screw, 5/16-18 x 2.5, Gr5
53	6					RHW1406	Screw, HHC, 1/2-13 x 1 3/4, Gr5
54	1					RHW1430	Screw, HHC, 1/2-13 x 12, Gr5
55	8					RHW1604	Screw, HHC, 5/8-11 x 2, Gr5
56	Varies	6	7	8	9	(10) RHW2404	Bolt, Carriage, 1/2-13 x 1 1/4, Gr5
57	2					RHW4105	Screw, Shoulder, Allen, 1/2 x 5/8
58	10					RHW5031	Washer, Flat, .19, Gr2
59	4					RHW5262	Washer, Flat, 3/8, Gr5
60	9					RHW5632	Washer, Flat, 5/8, Gr5
61	1					RHW6002	Washer, Lock, Split, 1/4, Gr5
62	1					RHW7101	Nut, Hex, 5/16, Gr5
63	2					RHW7201	Nut, Hex, 3/8, Gr5
64	13					RHW7203	Nut, Lock, Center, .38-16, Gr5
65	12					RHW7401	Nut, Hex, 1/2, Gr5
66	5					RHW7403	Nut, Lock, Center, .5, Gr5
67	Varies	6	7	8	9	(10) RHW7408	Nut, Acorn, 1/2, Gr2
68	9					RHW7607	Nut, Top Lock Flange, .63-11, Gr8
69	1					RHW8012	Pin, Cotter, .13-2, Gr2
70	2					RHW8064	Pin, Lynch, .44-1.63, Large Ring
71	1					RHW8117	Washer, Fender, .25, Gr2
72	1					RHW8613	Weld, Plate
73	1					RHW8614	Plate, Cover
74	1					RHW8616	Hose Cradle
75	1					RHW8618	Hose Spring
76	8					RHW9001	Screw, #10-24 x 3/4
77	10					RHW9002	Nut, Nylock, .19(10)-24, Gr2
78	2					RHW9006	Screw, #10-24 x 1

STANDARD HYDRAULIC COMPONENTS A,C,D,E Series

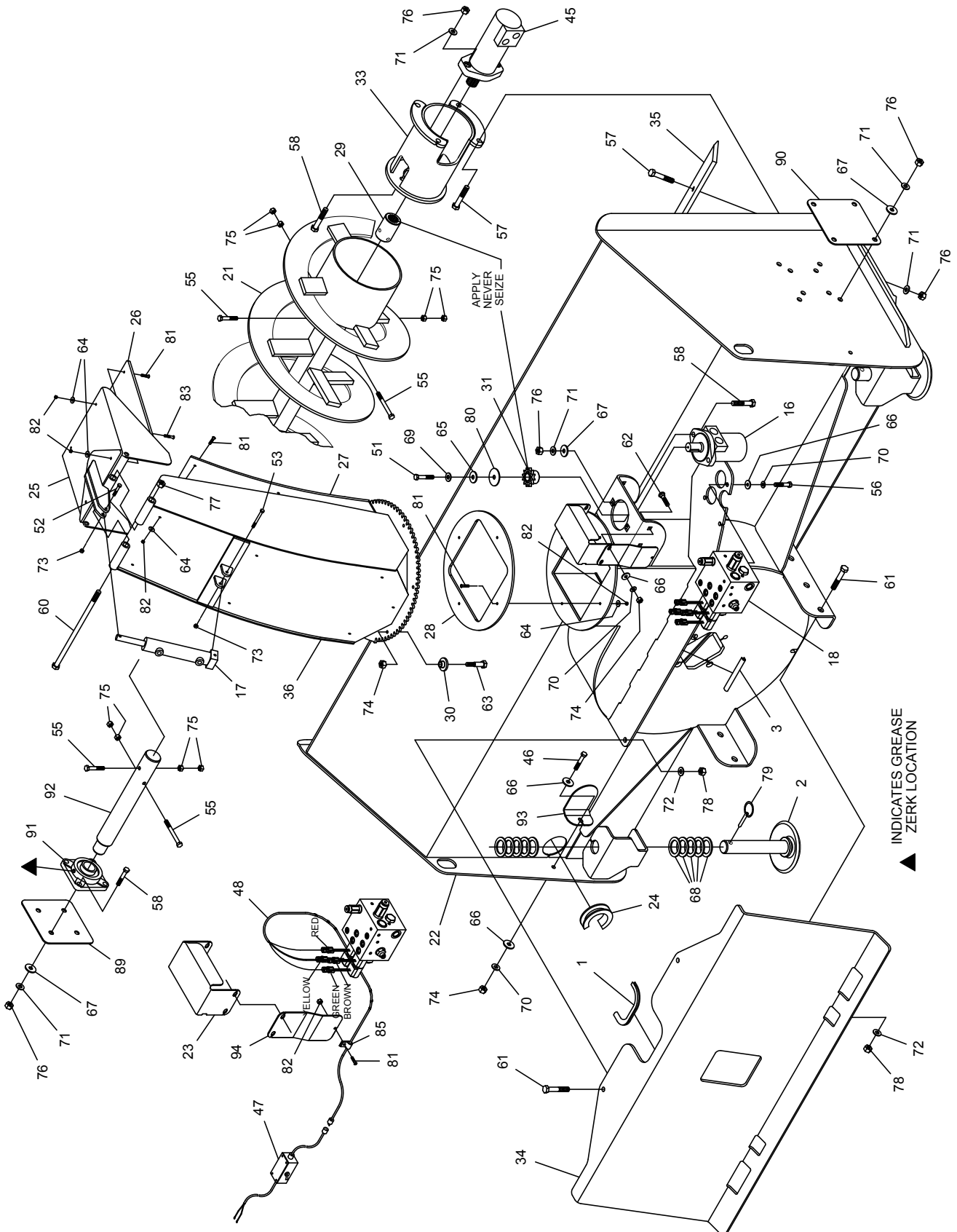


STANDARD HYDRAULIC COMPONENTS A,C,D,E Series

Item	Qty	28-10552 SF/A 48"- 60"	28-10549 SF/C 48"- 60"	28-10550 SF/D 48"- 60"	28-10551 SF/E 48"- 60"	28-10553 SF/D 72"- 84"	28-10554 SF/E 72"- 84"	Description
1	1	03-5902	03-10054	LAF4576	LAF4575	LAF4576	LAF4575	Motor, Fan
2	2						03-10108	Hose, .25 x 50, 6FF-6FF
3	1						03-10161	Hose, .5 x 88, 10FF-10MB
4	2						03-1953	Elbow, 90°, 6MF-10MB
5	2						03-2092	Elbow, 90°, 6MB-6MF
6	4						03-2115	Elbow, 45°, 6MB-6MF
7	1						03-2126	Elbow, 90°, 10MB-10MF
8	2						03-4316	Hose, .25 x 20, 6FF-6FF
9	2						03-4372	Tee, 10MF-10MF-10FF
10	2 (48-60) 1 (72-84)	03-5661	03-5661	03-5661	03-5661	03-5256	03-5256	Hose, .5 x 36, 10FF-10FF Hose, .5 x 51, 10FFLG-10MG
11	1						03-5755	Hose, .5 x 100, 10FF-10FF
12	1						03-5843	Manifold
13	3 (48-60) 1 (72-84)						03-5901	Fitting, 10MB-10MF
14	1						03-5907	Valve, Check, In-Line, 10MF-10MF
15	1						03-5908	Hose, .5 x 34, 10FF-10MB
16	1						03-5909	Fitting, 10FFX-10MB
17	1	07-7744	07-7744	07-7744		07-7744		Nut, Castle
18	1		13-50523					Weld,"C" Wheel Motor Conversion Kit
19	1						LAF4776	Motor, Chute Rotate
20	1						LAF4779	Cylinder, Deflector
21	1	LAF9915	LAF9915	LAF9915	LAF4798	LAF9915	LAF4798	Motor, Auger
22	1 (72-84)					03-5910	03-5910	Hose, .5 x 48, 10FF-10MB
23	1						07-7830	Harness, Controller
24	1						LAF9394	Harness, Switch Box

NOTE: All parts are the same as the 28-10554 except for those parts numbered under the other models.
*ITEMS may vary per Prime Mover -- Contact FFC for correct item.

HIGH FLOW PARTS LIST

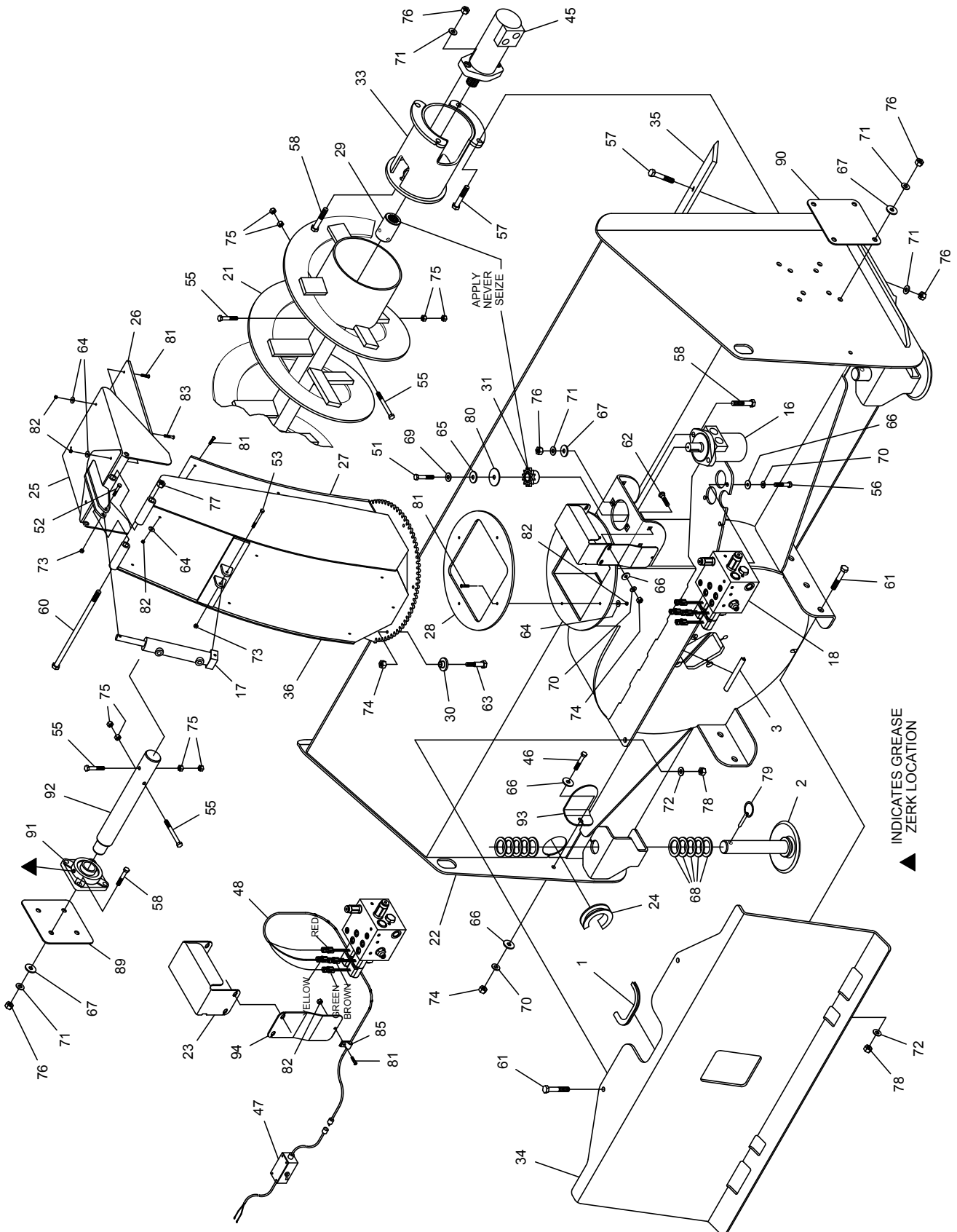


HIGH FLOW PARTS LIST

ITEM	QTY.	LAF6774 72" 'F' 'G' or 'H' Motor	11009 78" 'F' 'G' or 'H' Motor	LAF6786 84" 'F' 'G' or 'H' Motor	LAF6798 96" 'G' or 'H' Motor	DESCRIPTION
1	1				LAF1421	Hose Hole Gasket
2	2				LAF1485	Skid Shoe
3	1				LAF3412	Shroud Gusset Protector
4	2 (F&G) 3 (H)				P276450	Adapter 12MB-12MJ
5	2				LAF4246	Elbow 45° 6MB-6MJ
6	2				P261350	Elbow 90° 6MB-6MJ
7	2				LAF4302	Hose .25" x 19" 6FJ-6FJ
8	2				03-2140	Adapter 6MB-6MJ
9	2				LAF4460	Hose .25" x 48.5" 6FJ-6FJ
10	2				LAF4679	Adapter 6MJ-10MB
11	1				LAF4752	Hose .75" X 80" 12MB-12FJ
12	1 (F) 2 (G&H)				LAF4755	Tee 12MJ-12FJ-12MJ
13	1				LAF4756	Hose .75" x 30" 12FJ-12FJ90°
14	1 (F&G) 2 (H)				LAF4760	Elbow 45° 12MB-12MJ
15	1 (F) 2 (G&H)	LAF4765 (48")	LAF4763 (54")	LAF4763 (54")	LAF4757 (60")	Hose .75" x (length noted) 12FJ-10MB
16	1				LAF4776	Motor Chute Rotation
17	1				LAF4779	Cylinder 1" Bore 4" Stroke .5" Rod
18	1				LAF4780	Manifold (4) Solenoids
19	1 (G&H)	LAF4783 (72")	LAF4764 (78")	LAF4764 (78")	LAF4758 (84")	Hose .75" x (length noted) 12FJ-10MB
20	1	LAF4784 (26")	LAF4319 (32")	LAF4319 (32")	LAF4759 (38")	Hose .75" x (length noted) 12FJ-10MB
21	1	LAF6510	13-52893	LAF6512	LAF6514	Auger
22	1	LAF6511	13-52890	LAF6513	LAF6515	Main Housing
23	1				LAF6516	Chute Motor Guard
24	1 (F) 2 (G&H)				LAF6517	Shroud Gasket Protector
25	1				LAF6527	Deflector
26	1				LAF6551	Deflector Liner
27	1				LAF6565	Chute Liner
28	1				LAF6566	Chute Rotation Pad
29	1 (F) 2 (G&H)				LAF6567	Auger Sleeve
30	6				LAF6568	Chute Retainer Bushing
31	1				LAF6587	Chute Rotation Sprocket
32	1				13-53347	Fan
33	1 (F) 2 (G&H)				LAF6593	Motor Mount

NOTE: All parts are the same as the LAF6798 except for those parts numbered under the other models.

HIGH FLOW PARTS LIST

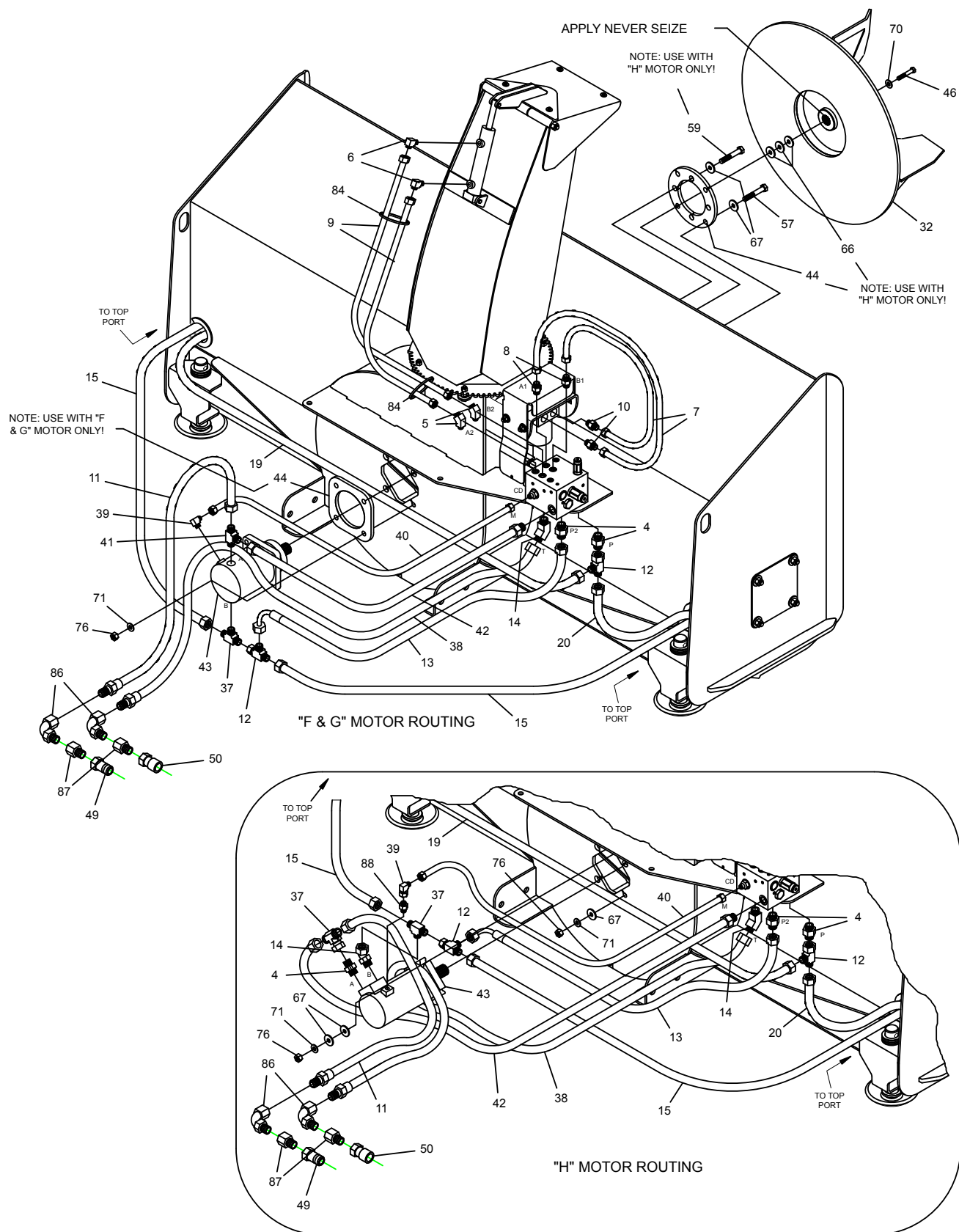


HIGH FLOW PARTS LIST

ITEM	QTY.	LAF6774 72" 'F' 'G' or 'H' Motor	11009 78" 'F' 'G' or 'H' Motor	LAF6786 84" 'F' 'G' or 'H' Motor	LAF6798 96" 'G' or 'H' Motor	DESCRIPTION
34	1				LAF6594	Loader Attachment Plate
35	1	LAF6595	13-52913	LAF6590	LAF6591	Cutting Edge
36	1				LAF6599	Chute
37	1 (F&G) 2 (H)			LAF4419(F)	03-2770 (G) LAF4761 (H)	Elbow 90° 12MB-12MJ (F only) Tee 12MJ-12MJ-12MB (G only) Tee 12MJ-12MJ-12FJ (H only)
38	1				LAF4518 or LAF4781	Hose .75" x 115" 12MB-12FJ (F&G) Hose .75" x 132" 12MB-12FJ (H)
39	1				03-2770 or LAF4093	Elbow 90° 4MB-6MJ (F&G) Elbow 90° 6MJ-6FJ (H)
40	1				LAF4668 or LAF4670	Hose .25" x 32.5" 6FJ-6FJ (F&G) Hose .25" x 25.5" 6FJ-6FJ (H)
41	1 (F&G)				LAF4753	Tee 12MJ-12MB-12MJ
42	1				LAF4754 or LAF4782	Hose .5" x 30" 12FJ-8MB (F&G) Hose .5" x 48" 12FJ-8MB (H)
43	1				LAF4777 (F&G) or LAF4778 (H)	Fan Motor
44	1				LAF6588 (F&G) or LAF6589 (H)	Motor Mount Plate
45	1 (F) 2 (G&H)				LAF4798 (F&H) or LAF9915 (G)	Auger Motor
46	2 (F) 1 (G&H)				P100604 (F&G) P100605 (H)	Gr 5 Hex Head Cap Screw .38" x 1" Gr 5 Hex Head Cap Screw .38" x 1.25"
*47	1				LAF9394	Wire Harness with Control Box
48	1				LAF9395	Wire Assembly
*49	1				LAF4259	Quick Coupler Male 12FB
*50	1				LAF4258	Quick Coupler Female 12FB
51	1				P100403	Gr 5 Hex Head Cap Screw .25" x .75"
52	1				07-3022	Gr 8 Hex Head Cap Screw .25" x 2"
53	1				RHW1043	Gr 8 Hex Head Cap Screw .25" x 2.5"
55	4				P100614	Gr 5 Hex Head Cap Screw .38" x 3.5"
56	3				P100603	Gr 5 Hex Head Cap Screw .38" x .75"
57	Varies	10 (F) 14 (G) 18 (H)	10 (F) 14 (G) 18 (H)	11 (F) 15 (G) 19 (H)	P100806 16 (G) 20 (H)	Gr 5 Hex Head Cap Screw .5" x 1.5"
58	8 (F) 6 (G&H)				RHW1406	Gr 5 Hex Head Cap Screw .5" x 1.75"
59	4				P100809	Gr 5 Hex Head Cap Screw .5 x 2.25"
60	1				RHW1430	Gr 5 Hex Head Cap Screw .5" x 12"
61	6				RHW1604	Gr 5 Hex Head Cap Screw .63" x 2"
62	4				RHW2205	Gr 5 Carriage Bolt .38" x 1"
63	6				RHW4106	Allen Head Shoulder Screw .5" x .75" with .38"-16 tpi x .63"

NOTE: All parts are the same as the LAF6798 except for those parts numbered under the other models.
*ITEMS may vary per Prime Mover -- Contact FFC for correct item.

HIGH FLOW HYDRAULIC/ELECTRIC COMPONENTS



HIGH FLOW PARTS LIST

ITEM	QTY.	LAF6774 72" 'F' 'G' or 'H' Motor	11009 78" 'F' 'G' or 'H' Motor	LAF6786 84" 'F' 'G' or 'H' Motor	LAF6798 96" 'G' or 'H' Motor	DESCRIPTION	
64	15				RHW5031	Gr 2 Flat Washer .19" SAE	
65	1				P850104	Gr 5 Flat Washer .25" USS	
66	9 (F) 7 (G) 10 (H)				RHW5262	Gr 5 Flat Washer .38 USS	
67	14 (F&G) 30 (H)				07-1763	Gr 8 Flat Washer .5" SAE	
68	24				07-10126	Gr 5 Flat Washer 1.63" SAE	
69	1				RHW6002	Gr 5 Lock Washer .25"	
70	9 (F) 8 (G&H)				P851106	Gr 5 Lock Washer .38"	
71	Varies	22 (F) 24 (G) 28 (H)	22 (F) 24 (G) 28 (H)	23 (F) 25 (G) 29 (H)	P851108 26 (G) 30 (H)	Gr 5 Lock Washer .5"	
72	6				RHW5632	Gr 5 Flat Washer .63" SAE	
73	2				P158003	Gr 5 Lock Nut .25" (nylock)	
74	5 (F) 4 (G&H)				RHW7201	Gr 5 Hex Nut .38"	
75	14				RHW7203	Gr 5 Lock Nut .38"	
76	Varies	22 (F) 24 (G) 28 (H)	22 (F) 24 (G) 28 (H)	23 (F) 25 (G) 29 (H)	RHW7401 26 (G) 30 (H)	Gr 5 Hex Nut .5"	
77	1				RHW7403	Gr 5 Lock Nut .5"	
78	6				RHW7607	Gr 8 Top Lock Flange Nut .63"	
79	2				RHW8064	Lynch Pin .44" x 1.63"	
80	1				RHW8117	Gr 2 Fender Washer .08" x .25" x 1.5"	
81	14				RHW9001	Truss Head Machine Screw .19" x .75"	
82	16				RHW9002	Gr 2 Lock Nut .19" (nylock)	
83	2				RHW9006	Truss Head Machine Screw .19" x 1"	
84	8				RHW5002	Plastic Tie	
85	1				07-1177	Cable Clip	
*86	2	Contact FFC to obtain correct item.					Elbow (not required on all models)
*87	2	Contact FFC to obtain correct item.					Adapter (not required on all models)
88	1 (H)				LAF4762	Adapter 4MB-6MJ	
89	1 (F)			LAF6579		End Plate Cap for Bearing	
90	1 (F) 2 (G&H)				LAF6580	End Plate Cap for Motor	
91	1 (F)			LAF6808		Flange Mount Bearing 1.44" ID 4-Bolt	
92	1 (F)			LAF6569		Idler Shaft for Single Motor	
93	1 (F)			LAF6570		Cover for Single Motor	
94	1				LAF6508	Chute Motor Guard Plate	

NOTE: All parts are the same as the LAF6798 except for those parts numbered under the other models.
 *ITEMS may vary per Prime Mover -- Contact FFC for correct item.

Notes

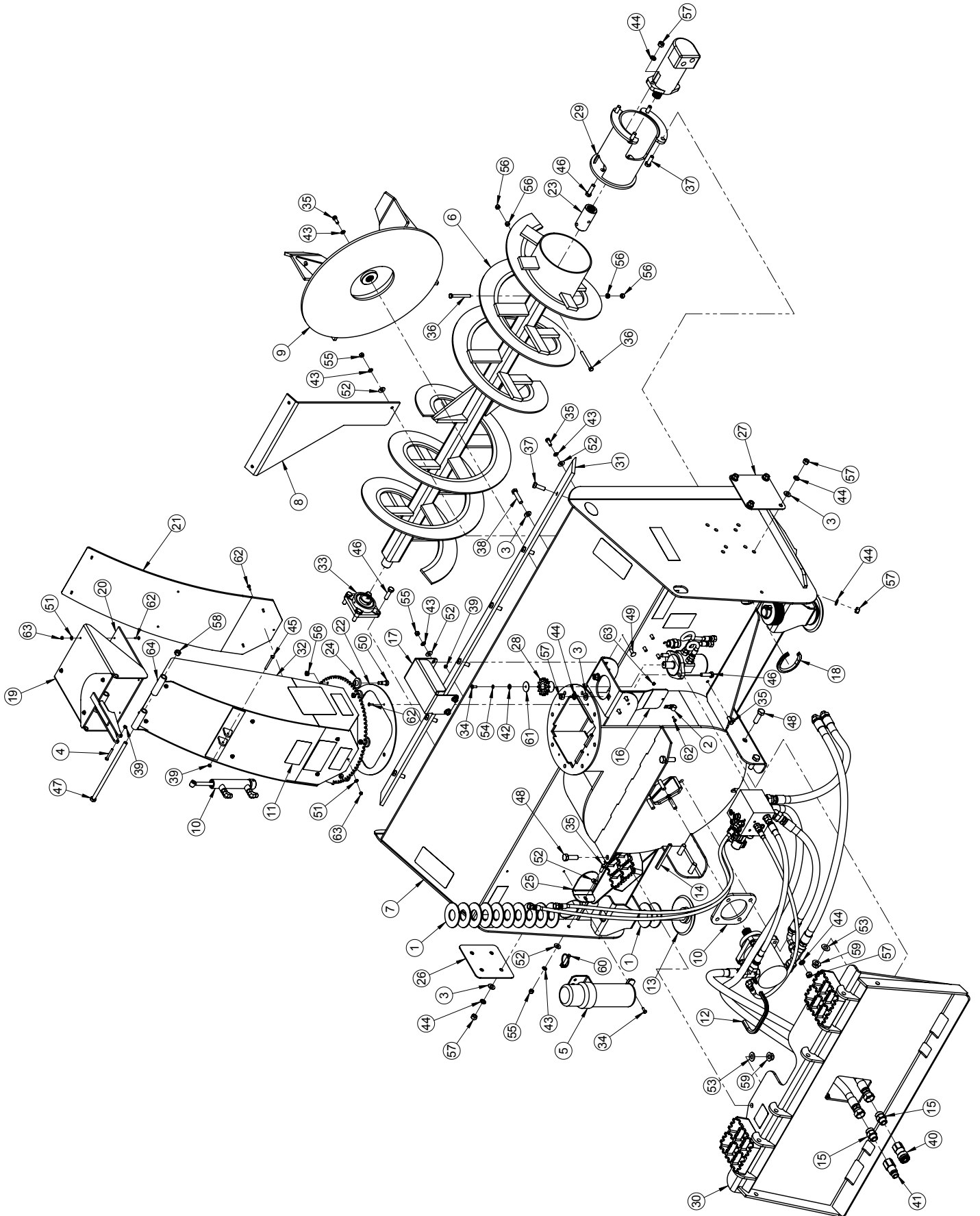
PARTS LISTS FOR

HIGH FLOW BLOWERS
11072, 11078, 11084 & 11096

&

HYDRAULIC COMPONENTS
28-10555, 28-10556, 28-10558, 28-10559, 28-10557 & 28-10560

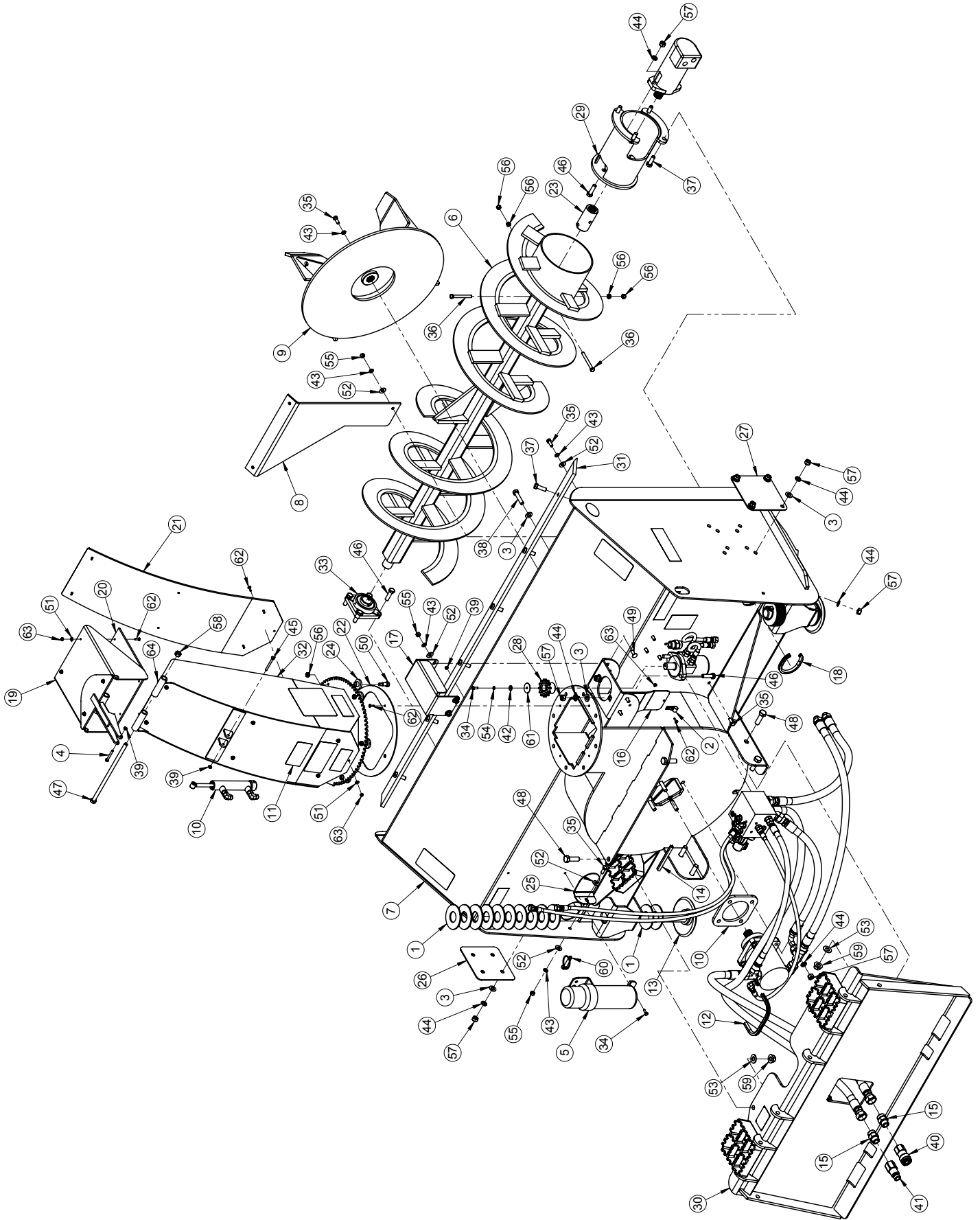
HIGH FLOW PARTS LIST



HIGH FLOW PARTS LIST

Item	Qty	11072 72"	11078 78"	11084 84"	11096 96"	Description
1	24				07-10126	Washer, Flat, 1 5/8 SAE, Gr5
2	1				07-1177	Clamp, Rubber Coat, 1/2 x 3/4
3	14 (F,G) 30 (H)				07-1763	Washer, Flat, 1/2 SAE, Gr8
4	1				07-3022	Screw, HHC, Gr8, 1/4-20 x 2
5	1				07-6869	Manual Holder
6	1 1	13-17284 (F) LAF6510 (G,H)	13-17285 (F) 13-52893 (G,H)	13-17286 (F) LAF6512 (G,H)	LAF6514 (G,H)	Weld, Auger
7	1	13-17324-72	13-17324-78	13-17324-84	13-17324-96	Weld, Main Housing
8	1				13-17327	Plate, Fan, Cover
9	1				13-53347	Weld, Fan
10	1		28-10555 (F) 28-10556 (G) 28-10557 (H)		28-10558 (F) 28-10559 (G) 28-10560 (H)	Kit, Hydraulic Motor
11	1				28-10577	Assembly, Labels
12	1				LAF1421	Gasket, Hose Hole
13	2				LAF1485	Weld, Skid Shoe
14	1				LAF3412	Hose Guard, 5 inch
15	2				LAF4076	Fitting, 12MB-12MF
16	1				LAF6508	Plate, Chute, Motor Guard
17	1				LAF6516	Plate, Chute, Motor Guard
18	1 (F) 2 (G,H)				LAF6517	Shroud, Gasket Protector
19	1				LAF6527	Weld, Deflector
20	1				LAF6551	Liner, Deflector
21	1				LAF6565	Liner, Chute
22	1				LAF6566	Rotation Pad, Chute
23	1 (F) 2 (G,H)				LAF6567	Sleeve, Auger Rod
24	6				LAF6568	Rod, 1.5 x .69
25	1 (F)				LAF6570	Cover, Single Motor
26	1 (F)				LAF6579	End Plate, Bearing
27	1 (F) 2 (G,H)				LAF6580	Plate, End Cap
28	1				LAF6587	Weld, Sprocket, Chute Rotation
29	1 (F) 2 (G,H)				LAF6593	Weld, Motor Mount
30	1				LAF6594	Weld, Back Plate
31	1	LAF6595	13-52913	LAF6590	LAF6591	Edge

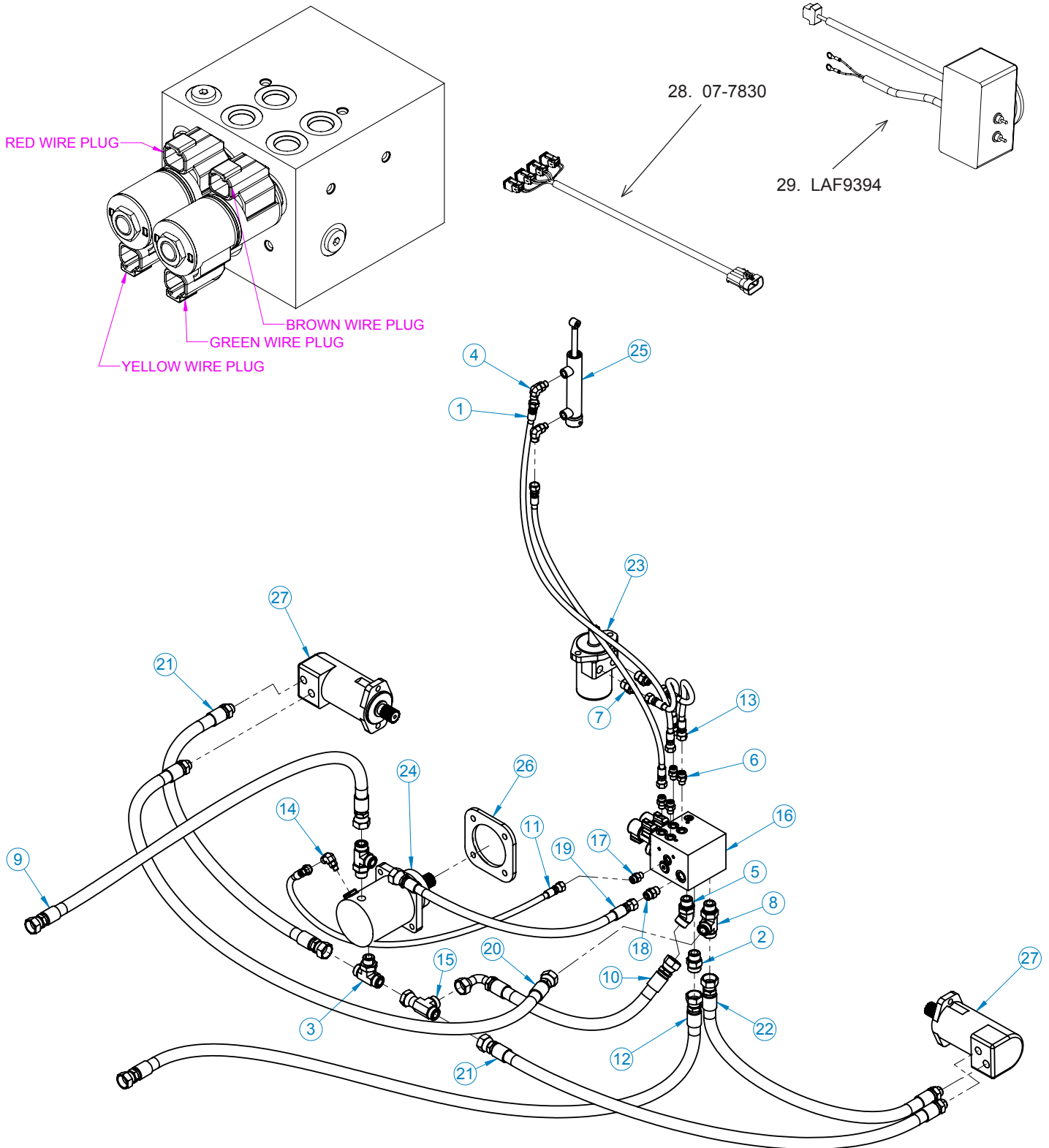
HIGH FLOW PARTS LIST



HIGH FLOW PARTS LIST

Item	Qty	11072 72"	11078 78"	11084 84"	11096 96"	Description
32	1				LAF6599	Weld, Chute
33	1 (F)				LAF6808	Flange, Mount Bearing
34	3				P100403	Screw, HHC, 1/4-20 x 3/4, Gr5
35	9 (F) 8 (G,H)				P100604	Bolt, Hex, 3/8-16 x 1, Gr5
36	2 (F) 4 (G,H)				P100614	Bolt, Hex, 3/8 x 3 1/2, Gr5
37	VARIES	10 (F) 14 (G) 18 (H)	10 (F) 14 (G) 18 (H)	11 (F) 15 (G) 19 (H)	P100806 16 (G) 20 (H)	Bolt, Hex, 1/2 x 1 1/2, Gr5
38	4				P100809	Screw, HHC, 1/2-13 x 2.25, Gr5
39	4				P158003	Nut, Elastic Lock, 1/4
40	1				P272670	QD, 8FF, Female, 12FB
41	1				P272671	QD, 8FF, Male, 12FB
42	1				P850104	Washer, Flat, 1/4, Gr5
43	13 (F) 12 (G,H)				P851106	Washer, Lock 3/8
44	VARIES	22 (F) 24 (G) 28 (H)	22 (F) 24 (G) 28 (H)	23 (F) 25 (G) 29 (H)	P851108 26 (G) 30 (H)	Washer, Lock, 1/2
45	1				RHW1043	Screw, 1/4-20 x 2 1/2, Gr5
46	8 (F) 6 (G,H)				RHW1406	Screw, HHC, 1/2-13 x 1 3/4, Gr5, Nylock
47	1				RHW1430	Screw, HHC, 1/2-13 x 12, Gr5
48	6				RHW1604	Screw, HHC, 5/8-11 x 2, Gr5
49	4				RHW2205	Bolt, Carriage, 3/8-16 x 1, Gr5
50	6				RHW4106	Screw, Allen Shoulder, 1/2 x 3/4
51	15				RHW5031	Washer, Flat, SAE, .19, Gr2
52	13 (F) 11 (G) 14 (H)				RHW5262	Washer, Flat, 3/8, Gr5
53	6				RHW5632	Washer, Flat, 5/8, Gr5
54	1				RHW6002	Washer, Lock, Split, 1/4, Gr5
55	8 (F) 7 (G,H)				RHW7201	Nut, Hex, 1/2, Gr5
56	10 (F) 14 (G,H)				RHW7203	Nut, Lock, Center Dent, .5, Gr5
57	VARIES	22 (F) 24 (G) 28 (H)	22 (F) 24 (G) 28 (H)	23 (F) 25 (G) 29 (H)	RHW7401 26 (G) 30 (H)	Nut, Hex, 1/2, Gr5
58	1				RHW7403	Nut, Lock, Center Dent, .5, Gr5
59	6				RHW7607	Nut, Top Lock Flange, .63-11, Gr8
60	2				RHW8064	Pin, Lynch, .44-1.63, Large Ring
61	1				RHW8117	Washer, Fender, .25, Gr2
62	14				RHW9001	Screw, Machine, #10-24 x 3/4
63	16				RHW9002	Nut, Nylock, .19 (10)-24, Gr2
64	2				RHW9006	Screw, Machine, #10-24 x 1

HIGH FLOW HYDRAULIC COMPONENTS F & G Series

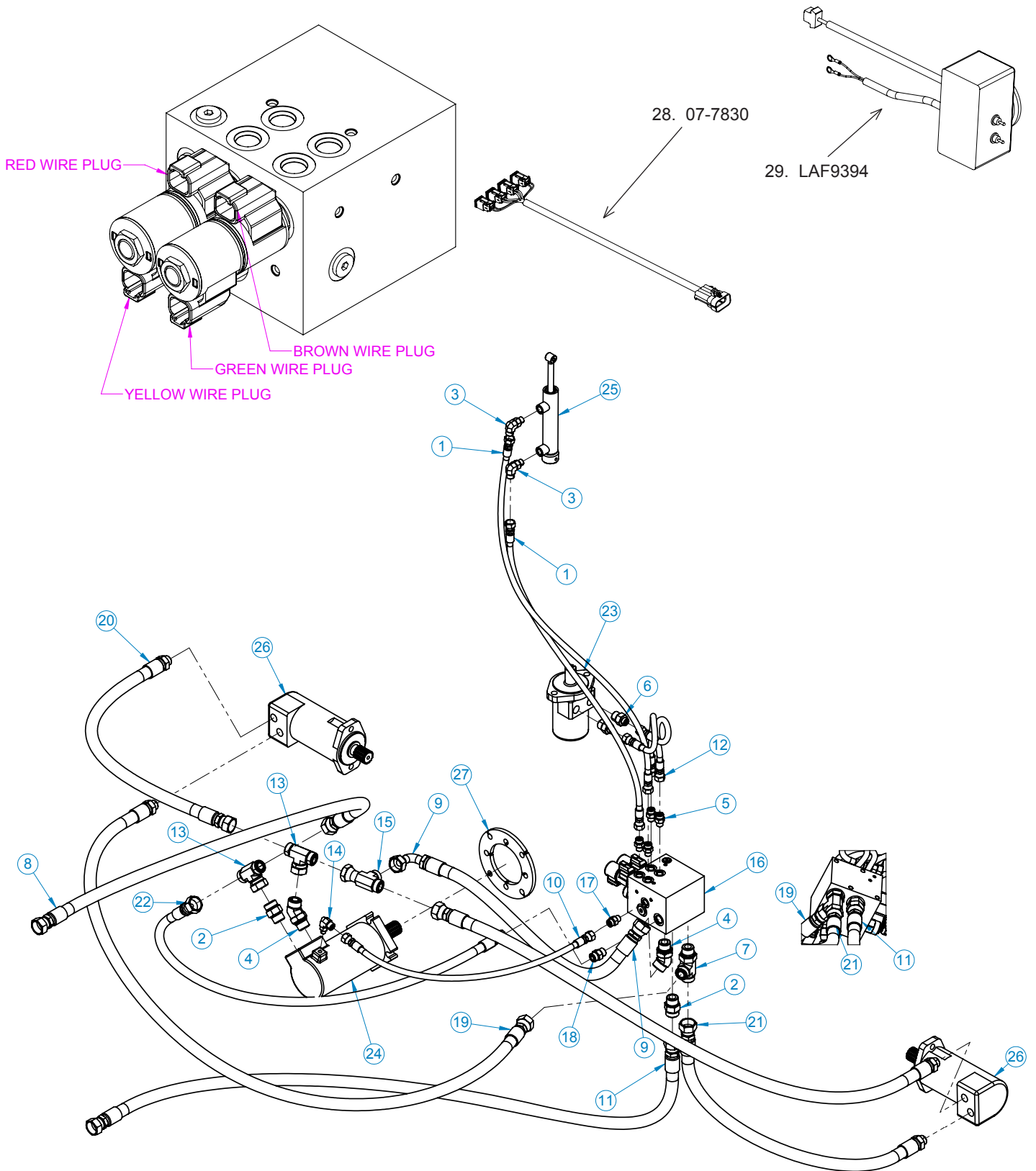


HIGH FLOW HYDRAULIC COMPONENTS F & G Series

Item	Qty	28-10555 HF/F 72"-78"	28-10556 HF/G 72"-78"	28-10558 HF/F 84"-96"	28-10559 HF/G 84"-96"	Description
1	2				03-10108	Hose, .25 x 50, 6FF-6FF
2	2 (F) 1 (G)				03-1945	Fitting, 12MB-12MF
3	1 (F) 1 (G)			03-2177	03-1950	Elbow, 90°, 12MB-12MF Tee, 12MF-12MB
4	2				03-2092	Elbow, 90°, 6MB-6MF
5	1				03-2182	Elbow, 45°, 12MB-12MF
6	4				03-2291	Fitting, 6MB-6MF
7	2				03-2564	Fitting, 6MF-10MB
8	1 (F) 2 (G)				03-3135	Tee, 12MB-12MF-12MF
9	1				03-3379	Hose, .75 x 80, 12FF-12FF
10	1				03-3390	Hose, .75 x 30, 12FF-12FF90
11	1				03-3900	Hose, .25 x 36, 6FF-6FF
12	1				03-4101	Hose, .75 x 142, 12FF-12FF
13	2				03-4316	Hose, .25 x 20, 6FF-6FF
14	1				03-4589	Elbow, 90°, 4MB-6MF
15	1				03-4637	Tee, 12FF-12MF-12MF
16	1				03-5894	Manifold, AL, 4 gpm, 12V
17	1				03-5904	Valve, Check, In-line, 6MB-6MF
18	1				03-5905	Valve, Check, In-line, 8MF-8MB
19	1				03-5906	Hose, .50 x 36, 8FF-12FF
20	1 (G)		03-5911 (78")		03-5916 (90")	Hose, .75 x (Length Noted) 10MB-12FF
21	1 (F) 2 (G)	03-5912 (56")	03-5912 (56")	03-5915 (60")	03-5915 (60")	Hose, .75 x (Length Noted) 12MB-12FF
22	1	03-5913 (32")	03-5913 (32")	03-5914 (37")	03-5914 (37")	Hose, .75 x (Length Noted) 10MB-12FF
23	1				LAF4776	Motor, Chute, 4.5
24	1				LAF4777	Motor, Fan, 2K, 9.6
25	1				LAF4779	Cylinder, Deflector
26	1				LAF6588	Plate, Motor Mount, G and F
27	1 (F) 2 (G)	LAF4798	LAF9915	LAF4798	LAF9915	Motor, Auger
28	1				07-7830	Harness, Controller
29	1				LAF9394	Harness, Switch Box

NOTE: All parts are the same as the 28-10559 except for those parts numbered under the other models.
*ITEMS may vary per Prime Mover -- Contact FFC for correct item.

HIGH FLOW HYDRAULIC COMPONENTS H Series



HIGH FLOW HYDRAULIC COMPONENTS H Series

Item	Qty	28-10557 HF/H 72"-78"	28-10560 HF/H 84"-96"	Description
1	2		03-10108	Hose, .25 x 50, 6FF-6FF
2	2		03-1945	Fitting, 12MB-12MF
3	2		03-2092	Elbow, 90°, 6MB-6MF
4	2		03-2182	Elbow, 45°, 12MB-12MF
5	4		03-2291	Fitting, 6MB-6MF
6	2		03-2564	Fitting, 6MF-10MB
7	1		03-3135	Tee, 12MB-12MF-12MF
8	1		03-3379	Hose, .75 x 80, 12FF-12FF
9	1		03-3390	Hose, .75 x 30, 12FF-12FF90
10	1		03-3900	Hose, .25 x 36, 6FF-6FF
11	1		03-4101	Hose, .75 x 142, 12FF-12FF
12	2		03-4316	Hose, .25 x 20, 6FF-6FF
13	2		03-4368	Tee, 12MF-12MF-12FF
14	1		03-4589	Elbow, 90°, 4MB-6MF
15	1		03-4637	Tee, 12FF-12MF-12MF
16	1		03-5894	Manifold, AL, 4gpm, 12V
17	1		03-5904	Valve, Check, In-line, 6MB-6MF
18	1		03-5905	Valve, Check, In-line, 8MF-8MB
19	1	03-5911 (78")	03-5916 (90")	Hose, .75 x (Length Noted) 10MB-12FF
20	2	03-5912 (56")	03-5915 (60")	Hose, .75 x (Length Noted) 10MB-12FF
21	1	03-5913 (32")	03-5914) (37")	Hose, .75 x (Length Noted) 10MB-12FF
22	1		03-6012	Hose, .50 x 50, 8FF-12FF
23	1		LAF4776	Motor, Chute, Rotate, 4.5
24	1		LAF4778	Motor, Fan, 4K
25	1		LAF4779	Cylinder, Deflector
26	2		LAF4798	Motor, Auger
27	1		LAF6589	Plate, Motor Mount, H Series
28	1		07-7830	Harness, Controller
29	1		LAF9394	Harness, Switch Box

NOTE: All parts are the same as the 28-10560 except for those parts numbered under the other models.
*ITEMS may vary per Prime Mover -- Contact FFC for correct item.

PRIME MOVER SPECIFICATIONS

IMPORTANT Exceeding any of the maximum recommended prime mover specifications **CAN** result in damage to this product and **WILL** void all FFC warranties.

DESCRIPTION	SPECIFICATIONS		
	All Models Motor Kit (A)	All Models Motor Kit (C) (D) or (E)	All Models Motor Kit (F) (G) or (H)
Weight of Prime Mover without Snow Blower	8,000 lbs. maximum	11,000 lbs. maximum	11,000 lbs maximum
Hydraulic Pressure Output	3,000 psi maximum	3,000 psi maximum	3,500 psi maximum
Hydraulic Flow Output	13 gpm maximum	15 (C), 21 (D) or 27 (E) gpm maximum	34 (F&G) or 42 (H) gpm maximum
Rear Ballast	As required to maintain full prime mover stability. (Note the Shipping Weight on the specifications page, then see the operator's manual(s) for your prime mover, loader, and quick-attach for ballasting needs.)		

NOTICE Make sure your prime mover is producing the manufacturer's specified hydraulic flow (gpm) and pressure (psi), especially for operation at high altitudes. Using prime movers with less than specified flow or pressure will cause your Snow Blower to perform in a substandard manner.

HYDRAULIC SNOW BLOWER SPECIFICATIONS

Model Number	Overall Width	Overall Height	Overall Depth	Cutting Width	Shipping Weight*
LAF6748	48"	55.5"	37"	48"	490 lbs.
11005	60"	55.5"	37"	60"	687 lbs.
11006	72"	55.5"	37"	72"	724 lbs.
11008	78"	55.5"	37"	78"	742 lbs.
11007	84"	55.5"	37"	84"	761 lbs.
LAF6774	75"	74"	43"	73.5"	1180 lbs.
11009	81"	74"	43"	79.5"	1220 lbs.
LAF6786	87"	74"	43"	85.5"	1260 lbs.
LAF6798	99"	74"	43"	97.5"	1340 lbs.
11048 (SF)	48"	55.5"	37"	48"	610 lbs.
11060 (SF)	60"	55.5"	37"	60"	734lbs.
11072 (SF)	72"	55.5"	37"	72"	771 lbs.
11078 (SF)	78"	55.5"	37"	78"	789 lbs.
11084 (SF)	84"	55.5"	37"	84"	808 lbs.
11072 (HF)	75"	74"	43"	73.5"	1180 lbs.
11078 (HF)	81"	74"	43"	79.5"	1220 lbs.
11084 (HF)	87"	74"	43"	85.5"	1260 lbs.
11096 (HF)	99"	74"	43"	97.5"	1340 lbs.

All replacement hydraulics must have a minimum rated working pressure of 3,500 psi.

*NOTE: Increase the shipping weight by 10 lbs. if "E" motor is used, and decrease the shipping weight by 10 lbs. if "F" motor is used.

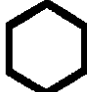


BOLT TORQUE SPECIFICATIONS

GENERAL TORQUE SPECIFICATION TABLES

Use the following charts when determining bolt torque specifications when special torques are not given. Always use grade 5 or better when replacing bolts.




SAE BOLT TORQUE SPECIFICATIONS

NOTE: The following torque values are for use with extreme pressure lubricants, plating or hard washer applications increase torque 15% when using hardware that is unplated and either dry or lubricated with engine oil.

Bolt Size		SAE GRADE 5 TORQUE				SAE GRADE 8 TORQUE				Bolt head identification marks as per grade. NOTE: Manufacturing Marks Will Vary
		Pounds Feet		Newton-Meters		Pounds Feet		Newton-Meters		
Inches	Millimeters	UNC	UNF	UNC	UNF	UNC	UNF	UNC	UNF	
1/4	6.35	8	9	11	12	10	13	14	18	<p>GRADE 2</p>  <p>GRADE 5</p>  <p>GRADE 8</p> 
5/16	7.94	14	17	19	23	20	25	27	34	
3/8	9.53	30	36	41	49	38	46	52	62	
7/16	11.11	46	54	62	73	60	71	81	96	
1/2	12.70	68	82	92	111	94	112	127	152	
9/16	14.29	94	112	127	152	136	163	184	221	
5/8	15.88	128	153	174	207	187	224	254	304	
3/4	19.05	230	275	312	373	323	395	438	536	
7/8	22.23	340	408	461	553	510	612	691	830	
1	25.40	493	592	668	803	765	918	1037	1245	
1-1/8	25.58	680	748	922	1014	1088	1224	1475	1660	
1-1/4	31.75	952	1054	1291	1429	1547	1700	2097	2305	
1-3/8	34.93	1241	1428	1683	1936	2023	2312	2743	3135	
1-1/2	38.10	1649	1870	2236	2535	2686	3026	3642	4103	

METRIC BOLT TORQUE SPECIFICATIONS

NOTE: The following torque values are for use with metric hardware that is unplated and either dry or lubricated with engine oil. Reduce torque 15% when using hardware that has extreme pressure lubricants, plating or hard washer applications.

Bolt head identification marks as per grade.		
		

Size of Bolt	Grade No.	Pitch (mm)	Pounds Feet	Newton-Meters	Pitch (mm)	Pounds Feet	Newton-Meters
M6	5.6	1.0	3.6-5.8	4.9-7.9	-	-	-
	8.8		5.8-4	7.9-12.7		-	-
	10.9		7.2-10	9.8-13.6		-	-
M8	5.6	1.25	7.2-14	9.8-19	1.0	12-17	16.3-23
	8.8		17-22	23-29.8		19-27	25.7-36.6
	10.9		20-26	27.1-35.2		22-31	29.8-42
M10	5.6	1.5	20-25	27.1-33.9	1.25	20-29	27.1-39.3
	8.8		34-40	46.1-54.2		35-47	47.4-63.7
	10.9		38-46	51.5-62.3		40-52	54.2-70.5
M12	5.6	1.75	28-34	37.9-46.1	1.25	31-41	42-55.6
	8.8		51-59	69.1-79.9		56-68	75.9-92.1
	10.9		57-66	77.2-89.4		62-75	84-101.6
M14	5.6	2.0	49-56	66.4-75.9	1.5	52-64	70.5-86.7
	8.8		81-93	109.8-126		90-106	122-143.6
	10.9		96-109	130.1-147.7		107-124	145-168
M16	5.6	2.0	67-77	90.8-104.3	1.5	69-83	93.5-112.5
	8.8		116-130	157.2-176.2		120-138	162.6-187
	10.9		129-145	174.8-196.5		140-158	189.7-214.1
M18	5.6	2.0	88-100	119.2-136	1.5	100-117	136-158.5
	8.8		150-168	203.3-227.6		177-199	239.8-269.6
	10.9		175-194	237.1-262.9		202-231	273.7-313
M20	5.6	2.5	108-130	146.3-176.2	1.5	132-150	178.9-203.3
	8.8		186-205	252-277.8		206-242	279.1-327.9
	10.9		213-249	288.6-337.4		246-289	333.3-391.6

WARRANTY

Limited Warranty

Except for the Excluded Products as described below, all new products are warranted to be free from defects in material and/or workmanship during the Warranty Period, in accordance with and subject to the terms and conditions of this Limited Warranty.

1. Excluded Products. The following products are excluded from this Limited Warranty:

(a) Any cable, part that engages with the ground (i.e. sprockets), digging chain, bearing, teeth, tamping and/or demolition head, blade cutting edge, pilot bit, auger teeth and broom brush that either constitutes or is part of a product.

(b) Any product, merchandise or component that, in the opinion of Paladin Light Construction¹, has been (i) misused; (ii) modified in any unauthorized manner; (iii) altered; (iv) damaged; (v) involved in an accident; or (vi) repaired using parts not obtained through Paladin Light Construction.

2. Warranty Period. The Limited Warranty is provided only to those defects that occur during the Warranty Period, which is the period that begins on the first to occur of: (i) the date of initial purchase by an end-user, (ii) the date the product is first leased or rented, or (iii) the date that is six (6) months after the date of shipment by Paladin Light Construction as evidenced by the invoiced shipment date (the "Commencement Date") and ends on the date that is twelve (12) months after the Commencement Date.

3. Terms and Conditions of Limited Warranty. The following terms and conditions apply to the Limited Warranty hereby provided:

(a) Option to Repair or Replace. Paladin Light Construction shall have the option to repair or replace the product.

(b) Timely Repair and Notice. In order to obtain the Limited Warranty, (i) the product must be repaired within thirty (30) days from the date of failure, and (ii) a claim under the warranty must be submitted to Paladin Light Construction in writing within thirty (30) days from the date of repair.

(c) Return of Defective Part or Product. If requested by Paladin Light Construction, the alleged defective part or product shall be shipped to Paladin Light Construction at its manufacturing facility or other location specified by Paladin Light Construction, with freight PRE-PAID by the claimant, to allow Paladin Light Construction to inspect the part or product.

Claims that fail to comply with any of the above terms and conditions shall be denied.

LIMITATIONS AND EXCLUSIONS.

THIS LIMITED WARRANTY IS IN LIEU OF ALL OTHER WARRANTIES, EXPRESS OR IMPLIED, INCLUDING WITHOUT LIMITATION THE WARRANTIES OF MERCHANTABILITY, FITNESS FOR A PARTICULAR PURPOSE AND ANY WARRANTY BASED ON A COURSE OF DEALING OR USAGE OF TRADE.

IN NO EVENT SHALL PALADIN LIGHT CONSTRUCTION BE LIABLE FOR CONSEQUENTIAL OR SPECIAL DAMAGES.

IN NO EVENT SHALL PALADIN LIGHT CONSTRUCTION BE LIABLE FOR ANY LOSS OR CLAIM IN AN AMOUNT IN EXCESS OF THE PURCHASE PRICE, OR, AT THE OPTION OF PALADIN LIGHT CONSTRUCTION, THE REPAIR OR REPLACEMENT, OF THE PARTICULAR PRODUCT ON WHICH ANY CLAIM OF LOSS OR DAMAGE IS BASED. THIS LIMITATION OF LIABILITY APPLIES IRRESPECTIVE OF WHETHER THE CLAIM IS BASED ON BREACH OF CONTRACT, BREACH OF WARRANTY, NEGLIGENCE OR OTHER CAUSE AND WHETHER THE ALLEGED DEFECT IS DISCOVERABLE OR LATENT.

¹Attachment Technologies Inc., a subsidiary of Paladin Brands Holding, Inc. (PBHI) is referred to herein as Paladin Light Construction.

February 10, 2010

NOTE: This page is for internal use only -- NOT a part of manual.

Revision Notes

03/12/09 Rev 2 - Corrected HF part # typos on pages 33, 35 & 37.

03/06/09 Rev 2 - Updated for Product transfer to Dexter.

10/20/08 Updated page 26, item 32 Fan (was LAF6592, now 13-53347).

09/11/08 Updated page 21, item 26 Fan (was LAF6708, now 13-53311).

07/17/08 Proofed by Ed J. & Released to Production.

07/16/08 Updated per ECR #0308.

8/19/09 Corrected part # pg 35 Line 45. Was LAF4698 S/B LAF4798.

9/22/09 Updated Joystick controls pg 38 & 39.

11-3-09 Chg'g RHW1601 to 07-7714 pg 29

11-9-09 Pg 27 replaced 03-10077 w/ c & d to LAF9915 & E to LAF4798

**10/20/10 Rev 3 Rearraigned, added tie down, lift added new 48" and
new standard & high flow, maintenance, troubleshooting.**

**5/18/11 chg'g hose 03-5333 to 03-10108 pg 53 & 55 Fit-Form & Function
added manifold wiring views pg 38,52,54**

8/3/11 Harness diagrams added to drawings & boms pgs 38,52,54