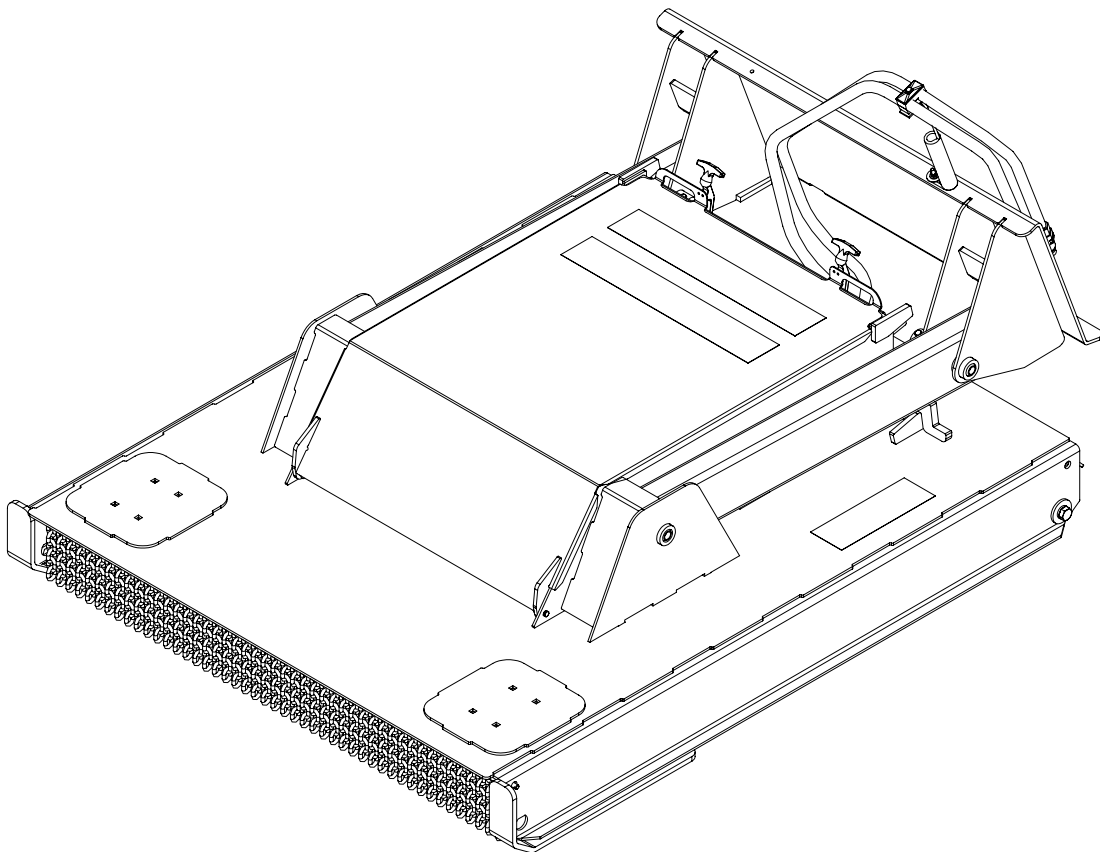




ROTARY BRUSH CUTTER

OWNERS & OPERATORS MANUAL



Models covered:
LAF3748, LAF3760, and LAF3772

OWNERS & OPERATORS MANUAL
FFC Attachments part# MR05686

FFC Attachments
100 East Lee Road
Lee, IL 60530
(800) 747-2132
www.ffcattachments.com

04/13/04

TABLE OF CONTENTS

Introduction, General Information, Serial Number	1
Owner and Operator Safety Information	2-5
Definitions of Safety Terms and Symbols, Accident Prevention	2
Safety Instructions	3-4
Safety Signs	5
Power Unit Specifications, Mounting	6
Hydraulic Connection	6
Operation	7
Maintenance	8
Service	9
Parts Illustration	10
Parts List	11-12
Specifications	12
Warranty	i

INTRODUCTION

Congratulations on your purchase of a new **FFC Attachments Rotary Brush Cutter**. This product has been designed and built to cut and mulch grass and brush. You or any other person who will be assembling, operating, maintaining, or working with this product are required to read and completely understand the information and instructions contained in this manual. If anyone does not fully understand every part of this manual, please obtain further assistance by contacting the dealer from which this product was purchased or by contacting **FFC Attachments** at the telephone number or address listed on the cover of this manual. Keep this manual available for reference whenever this product is being handled or used. Provide this manual to any new owners and/or operators.

This manual covers model[s] :**LAF3748, LAF3760 and LAF3772**. The difference between these models is the cutting width, details of which are covered on the parts list and specification page[s].

GENERAL INFORMATION

The purpose of this manual is to assist in assembling, mounting, operating, and maintaining your **Rotary Brush Cutter**: Read this manual carefully to obtain valuable information and instructions that will help you achieve years of safe and dependable service.

The illustrations and data used in this manual were current at the time of printing, but due to possible engineering and/or production changes, this product may vary slightly in detail. **FFC Attachments** reserves the right to redesign and/or change components as necessary without notification.

Throughout this manual, references may be made to:

Power Unit	The engine-driven machine to which this product must be attached.
Right, Left, Front, Rear	Directions that are determined in relation to the operator of the equipment when seated in the normal operating position.
IMPORTANT	Precautions that must be followed to prevent damage to equipment.
NOTICE	Precautions that must be followed to prevent substandard performance.

SERIAL NUMBER LOCATION

Always refer to the model and serial number when ordering parts or requesting information from your dealer. The serial number plate for this product is located on the upper left rear portion of the power unit attachment plate of your **Rotary Brush Cutter**.

Reference Information	
Model Number	Loader Make
Serial Number	Loader Model
Date Purchased	Loader Serial #

DEFINITION OF SAFETY TERMS AND SYMBOLS

Throughout this manual, the terms **DANGER**, **WARNING**, and **CAUTION** are used to indicate the degree of hazard to personnel if proper safety procedures are not followed. These words will be used in conjunction with the Safety Alert Symbol: a dark triangle containing a white exclamation mark.



The Safety Alert Symbol means:

ATTENTION! BECOME ALERT! YOUR SAFETY IS INVOLVED!

DANGER

Indicates an imminently hazardous situation which, if not avoided,
WILL result in death or serious injury.

WARNING

Indicates a potentially hazardous situation which, if not avoided,
could result in death or serious injury.

CAUTION

Indicates a potentially hazardous situation which, if not avoided,
may result in minor or moderate injury;
OR

may also be used to alert against unsafe practices which **may result in personal injury.**

ACCIDENTS CAN BE PREVENTED WITH YOUR HELP!

No accident prevention program can be successful without the wholehearted cooperation of the person who is directly responsible for the operation of the equipment.

To read equipment accident reports from all over the country is to be convinced that a large number of accidents can be prevented only by operators who consistently anticipate the results of their actions and thus prevent accidents from ever occurring. No power-driven equipment, whether it is on the highway, in a farm field, or in an industrial plant, can be any safer than the person who is at the controls.

If accidents are to be prevented [and accidents can be prevented], that prevention will come from equipment operators who accept their complete responsibility.

The designer, the manufacturer, and the safety engineer all help create a safe product when used correctly, but their combined efforts can be wiped out with a single careless act by the operator of that product.

The best safety device is a careful operator. **FFC Attachments** and your dealer ask that **YOU** be that careful, responsible equipment operator.

YOU ARE THE KEY TO SAFETY BECAUSE:

YOU are responsible for the SAFE operation and maintenance of **YOUR** Rotary Brush Cutter.

YOU are responsible to familiarize yourself, and anyone else who will assemble, operate, maintain, or work around this product, with the safety information contained in this manual.

YOU are responsible to read ALL information contained in this manual to any operators or maintenance personnel who are not fully able to read the written English language. Whether **YOU** read the manual as written or translate it into another language, **YOU** must make certain that all operators and maintenance personnel have a complete understanding of the full and exact contents of this manual. Translations of this manual into other languages are available by submitting a written request to **FFC Attachments**.

YOU can reduce the risk of injury or death by following all safety precautions and by using good safety practices.

SAFETY INSTRUCTIONS

WORK SAFELY - A CAREFUL OPERATOR IS THE BEST INSURANCE AGAINST ACCIDENTS !!

SECTION 1

WARNING SECTION



WARNING

Obey all the safety instructions listed in this section and throughout this manual. Failure to obey instructions in this section could result in death or serious injury.

BEFORE ATTEMPTING ANY TYPE OF ASSEMBLY, OPERATION, MAINTENANCE, OR OTHER WORK ON OR NEAR THIS PRODUCT:

- **READ AND COMPLETELY UNDERSTAND THIS MANUAL.**
- **READ AND COMPLETELY UNDERSTAND THE MANUALS PROVIDED WITH YOUR POWER UNIT, LOADER AND QUICK-ATTACH.**
- Read and understand all **safety signs** on this product and on your power unit, loader, and quick-attach.
- Know all your controls and know how to quickly stop all power unit movement, the **Rotary Brush Cutter** movement, and the engine in case of an emergency.
- Know and obey all applicable government rules, O.S.H.A. regulations, local laws and other professional guidelines for your operation.
- Make sure that anyone who will be assembling, mounting, operating, maintaining, repairing, removing, and/or storing this product:
 - has been instructed in the safe operation of this product and of the power unit and quick-attach to which this product is attached.
 - is physically and mentally capable of the safe operation of this type of equipment.
 - is not under the influence of drugs or alcohol.
 - is carefully supervised from a safe distance, especially if such person is inexperienced.
 - wears appropriate protective equipment (i.e. hardhat, safety glasses, work gloves, protective shoes, respirator, ear protection, etc.).
 - does not wear loose fitting clothing, loose or uncovered hair, or any accessories (jewelry, necktie, scarf, wrist watch, etc.) that can catch in moving parts.
 - has annually reviewed all safety instructions.
- Know and follow good work practices when assembling, mounting, maintaining, repairing, removing, and storing this product:
 - Work on a level surface in a well lit area.
 - Keep the area clean and dry.
- Use properly grounded electrical outlets & tools.

- Use the right tool for the job at hand.
- Make sure that your tools are in good condition for performing the desired function.
- When using tools, wear the protective equipment specified by the tool manufacturer. (i.e. hardhat, safety glasses, work gloves, protective shoes, etc.)

WHEN YOUR POWER UNIT IS USED DURING ANY TYPE OF ASSEMBLY, OPERATION, MAINTENANCE, OR OTHER WORK ON OR NEAR THIS PRODUCT:

- Before leaving the operator's station or before beginning any type of work on this product, lower this product to the ground, apply your power unit's parking brake, stop the engine, remove the starter key, wait for all moving parts to stop, and then relieve all pressure in the hydraulic lines. Refer to your power unit's operator's manual for instructions on how to relieve hydraulic pressure in lines.
- Know your loader's safe lifting and operating capacity and the weight of this product. See the specifications in this manual for the weight of this product and refer to your power unit's and loader's operator's manuals for safe operating limits. Lift capacity may be reduced if using a quick-attach.
- Never allow anyone, except the operator, to be around the power unit or this product when either is in motion. Do not startup unless others are several hundred feet clear of the work area.
- Do not allow riders on this product or the power unit.
- Do not stand or climb on this product when raised.
- Do not place any part of your body under any part of this product unless this product is securely resting on adequate blocking or on the ground.
- Do not use blocking made of concrete blocks, logs, buckets, barrels or any other material that could suddenly collapse or shift positions. Do not use wood or steel blocking that shows any signs of material decay. Do not use blocking that is warped, twisted, or tapered.
- Never operate controls from the ground. Operate the controls only from the operator's station.
- Never leave equipment unattended with the engine running or with this product raised on the loader.
- Be aware of the added weight and width of this product. Reduce travel speeds accordingly, especially when traveling over rough ground.
- Keep this product close to the ground and under control when transporting.

SAFETY INSTRUCTIONS

WORK SAFELY - A CAREFUL OPERATOR IS THE BEST INSURANCE AGAINST ACCIDENTS !!

WARNING SECTION [CONTINUED]



WARNING

Obey all the safety instructions listed in this section and throughout this manual. Failure to obey instructions in this section could result in death or serious injury.

WHEN DEALING WITH HYDRAULICS DURING ANY TYPE OF ASSEMBLY, OPERATION, MAINTENANCE, OR OTHER WORK ON OR NEAR THIS PRODUCT:

- Hydraulic fluid under pressure can penetrate the skin and cause serious injury or death. Hydraulic leaks under pressure may not be visible!
- If any fluid penetrates the skin, GET IMMEDIATE MEDICAL ATTENTION!!
- Wear safety glasses and protective clothing when searching for hydraulic leaks. Use a sound piece of cardboard or wood to pass over and verify leaks. DO NOT USE YOUR HANDS!
- Before connecting or disconnecting hydraulic hoses, read your tractor or power unit's operator's manual for detailed instructions on connecting and disconnecting hydraulic attachments.
- Make certain that all parts meet the specifications for this product when installing or replacing hydraulic hoses or fittings.
- After connecting hydraulic lines:
 - Slowly and carefully raise the loader and cycle the rollback / dump cylinders to check hose clearances and to check for any interference.
 - Operate the hydraulics on this product to check hose clearances and to check for any interference.
 - Make certain that the hoses cannot interfere with or actuate the quick-attach mechanism.
 - Make certain that hoses will not be pinched, or get tangled, in any equipment.
- Do not lock the auxiliary hydraulics of your power unit in the "ON" position.
- Refer to your power unit's operator's manual and this manual for procedures and intervals, then inspect and maintain the entire hydraulic system to insure that the fluid remains clean, that all devices function properly, and that there are no fluid leaks.

WHEN MOUNTING THIS PRODUCT TO YOUR POWER UNIT:

- Refer to the operator's manuals of your power unit, your loader, and your quick-attach for special or detailed mounting instructions.
- This product should fit onto the quick-attach or loader arms of your power unit the same as the original products that were designed by your loader / quick-attach manufacturer.
- If this product does not fit properly, contact **FFC Attachments** before operating.
- Never place your finger into the mounting plate or 3-point hitch or loader holes. A slight movement of the power unit or this product could cause serious injury.

BEFORE EACH USE, THOROUGHLY INSPECT THIS PRODUCT AND:

- Make certain that all safety signs are in place and legible. Refer to the safety sign page in this manual for the placement of safety signs for this product.
- Replace all damaged or excessively worn parts and hardware only with genuine **FFC Attachments** parts or with properly rated fasteners, hydraulic hoses, or fittings.
- Make certain that all locking pins, latches, and connection devices are properly installed and secured.
- Make certain that all protective guards, canopies, doors, etc., are in place and secure.

WHEN OPERATING THIS PRODUCT IN ACCORDANCE WITH DESIGN INTENTIONS:

- Keep everyone at least two hundred feet away from the unit when operating.

WHEN ADJUSTING, SERVICING OR REPAIRING THIS PRODUCT:

- Make no modifications to your **Rotary Brush Cutter**.
- When making repairs, use only genuine **FFC Attachments** parts or, for fasteners, hydraulic hoses, or hydraulic fittings, use only properly rated parts.
- Replacement parts, for parts with safety signs attached, must also have safety signs attached.

SECTION 2

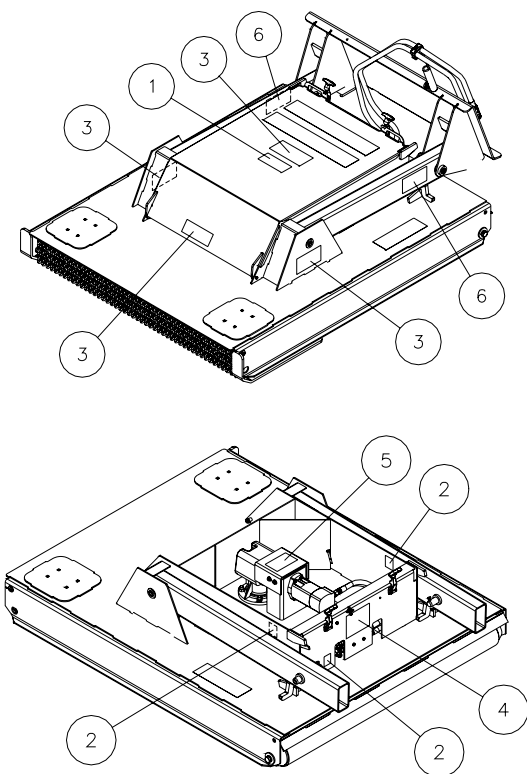


CAUTION

Obey all the safety instructions listed in this section and throughout this manual. Failure to obey instructions in this section may result in personal injury.

- Keep on the anti-skid material on top of this product. Under certain conditions, this area can be slippery.

SAFETY SIGN LOCATIONS



ITEM	QTY.	PART #	DESCRIPTION
1	1	RDL3141	READ MANUAL
2	3	RDL3129	HYDRAULIC
3	4	RDL3312	THROWN
4	1	RDL3313	SERVICING
5	1	RDL3314	ROTATING
6	2	RDL3127	PINCH POINT

INSTRUCTIONS

- Keep all safety signs clean and legible.
- Replace all missing, illegible, or damaged safety signs.
- Replacement parts for parts with safety signs attached must also have safety signs attached.
- Safety signs are available, free of charge, from your dealer or from FFC Attachments.

PLACEMENT OR REPLACEMENT OF SAFETY SIGNS

1. Clean the area of application with non-flammable solvent, then wash the same area with soap and water.
2. Allow the surface to fully dry.
3. Remove the backing from the safety sign, exposing the adhesive surface.
4. Apply the safety sign to the position shown in the diagram above and smooth out any bubbles.

ITEM 1



ITEM 2



ITEM 3



Item 4



Item 5



Item 6



POWER UNIT SPECIFICATIONS

IMPORTANT

Exceeding any of the maximum recommended power unit specifications **CAN** result in damage to this product and **WILL** void all FFC Attachments warranties.

DESCRIPTION	SPECIFICATIONS
Machine Operating Weight – NO LOAD	11,000 lbs. maximum
Rated Operating Load (SSL's ONLY)	3,750 lbs. maximum
Lift Capacity or Static Tip Load – Straight	7,500 lbs maximum
Hydraulic Pressure Output	3,500 psi. maximum
Standard Pump Flow	30 GPM max.
Rear Ballast	As required to maintain full power unit stability. (see the shipping weight on page 12, then see the operator's manual(s) for you power unit, loader, and quick-attach for your ballasting needs.)

ROTARY BRUSH CUTTER MOUNTING



SAFETY FIRST!! READ AND UNDERSTAND THE SAFETY INSTRUCTIONS (pages 2-5 of this manual) BEFORE BEGINNING ANY ROTARY BRUSH CUTTER MOUNTING

1. Place this product on a firm, level surface that is large enough to safely accommodate this product, your power unit, and all workers involved in the mounting process.
2. Refer to the operator's manual(s) for your power unit, loader, and quick-attach and follow the mounting instructions contained therein.
3. Carefully raise the loader arms and cycle the tilt cylinders or to check clearances and to verify that all mounting procedures have been successfully completed.

ROTARY BRUSH CUTTER HYDRAULIC CONNECTION



SAFETY FIRST!! READ AND UNDERSTAND THE SAFETY INSTRUCTIONS (pages 2-5 of this manual) BEFORE BEGINNING ANY ROTARY BRUSH CUTTER HYDRAULIC CONNECTION

1. Disconnect the hydraulic hose quick couplers from one another and attach the quick couplers to your power unit as per the instructions in your power unit's operator's manual.
2. Carefully raise the loader arm and cycle the tilt cylinders to check hose clearances and to check for any interference.

ROTARY BRUSH CUTTER OPERATION



SAFETY FIRST!! READ AND UNDERSTAND THE SAFETY INSTRUCTIONS (pages 2-5 of this manual) BEFORE BEGINNING ANY ROTARY BRUSH CUTTER OPERATION



WARNING

Failure to obey the following procedures could result in death or serious injury.

- **Make sure the blade shut off feature is functioning properly – never modify or disable.**
- **Do not lock the auxiliary hydraulics of your power unit in the “ON” position.**
- **Keep everyone at least two hundred feet away from the unit when operating.**

- TO START BLADE ROTATION:
 1. Lower **Brush Cutter** on the ground.
 2. Activate power unit loader auxiliary hydraulics to start blade rotation.
- IF BRUSH CUTTER IS RAISED COMPLETELY OFF THE GROUND, BLADE ROTATION WILL STOP. TO RE-START BLADE ROTATION:
 1. Deactivate power unit auxiliary hydraulics.
 2. Lower **Brush Cutter** flat on the ground.
 3. Activate power unit auxiliary hydraulics to start blade rotation. (A one to two second delay may be required.)



WARNING

If blade rotation does **NOT** stop when the **Brush Cutter** is raised completely off the ground the unit must be serviced immediately. Do not operate without the blade shut off feature. Failure to obey this warning could result in death or serious injury.

CUTTING INSTRUCTIONS

1. Your cutter is equipped with free-swinging cutting blades to reduce shock loads to the cutter if striking obstacles.
2. Start the machine slowly; do not use full throttle. Allow a few seconds for cutter blades to become aligned properly before going to full power.
3. The ground speed depends on two things: the density of the material being cut, and the size of the power unit. Never run fast enough to overload the power unit.
4. This cutter was designed to cut grass and brush 3" maximum diameter.

IMPORTANT

Attempting to grind stumps

CAN result in damage to this product and
WILL void all FFC Attachments warranties.

ROTARY BRUSH CUTTER MAINTENANCE



SAFETY FIRST!! READ AND UNDERSTAND THE SAFETY INSTRUCTIONS (pages 2-5 of this manual) BEFORE BEGINNING ANY ROTARY BRUSH CUTTER MAINTENANCE

BEFORE EACH USE

- Unlatch and raise hydraulic drive cover.
- Make sure that all nuts and bolts are in place and properly tightened.
- Make sure that all other fasteners are in place and are performing their specified function.
- Make sure that all hydraulic fittings are tightened and that there are no leaks in any fittings or hoses.
- Make sure that all safety signs are in place, are clean, and are legible.
(SEE THE SAFETY SIGN SECTION ON PAGE 5.)
- Replace any damaged parts and excessively worn parts.

WEEKLY

- Lubricate all pivot points.

AFTER FIRST 50 HOURS OF USE -- THEN EVERY 1000 HOURS OR YEARLY

- Drain gear box of lubricant and refill with 80-90W gear lube with an E.P. rating of GL-5 minimum (approx. 27 ozs.).

ROTARY BRUSH CUTTER SERVICE



SAFETY FIRST!! READ AND UNDERSTAND THE SAFETY INSTRUCTIONS (pages 2-5 of this manual) BEFORE BEGINNING ANY ROTARY BRUSH CUTTER SERVICE

Removing Wire, Twine, Weeds, etc. that are Wrapped Around the Blade / Stump Jumper Assembly

1. Park your power unit on a level surface with this product properly attached.
2. Place your power unit's transmission in "Park" and engage the parking brake.
3. Lower this product onto preplaced blocking that will support the main frame of this product so that the blade / stump jumper assembly can be accessed and rotated freely.



WARNING

Failure to obey the following procedures could result in death or serious injury.

- **Do not use blocking made of concrete blocks, logs, buckets, barrels or any other material that could suddenly collapse or shift positions. Do not use wood or steel blocking that shows any signs of material decay. Do not use blocking that is warped, twisted, or tapered.**

4. Shut off your power unit's engine, remove the starter key, wait for all moving parts to come to a stop, and relieve all pressure in the hydraulic lines.
5. Disconnect the hydraulic lines from your power unit and connect the two ends to each other. This should permit the blade / stump jumper assembly to rotate freely.
6. Pull the material from the blade / stump jumper assembly.

ALTERNATE METHOD

If your power unit is equipped with safety stops for the lift arms of the loader that can be activated from the operator's position or if the safety stops must be activated from outside the operator's position and a second person is present, then the method above may be replaced with these steps:

1. Park your power unit on a level surface with this product properly attached.
2. Place your power unit's transmission in "Park" and engage the parking brake.
3. Disconnect the hydraulic lines from your power unit and connect the two ends to each other. This should permit the blade / stump jumper assembly to rotate freely.
4. Fully raise the lift arms and fully extend the tilt cylinders to the fully dumped position.
5. Shut off your power unit's engine, remove the starter key, wait for all moving parts to come to a stop, and relieve all pressure in the hydraulic lines.
6. Pull the material from the blade / stump jumper assembly.

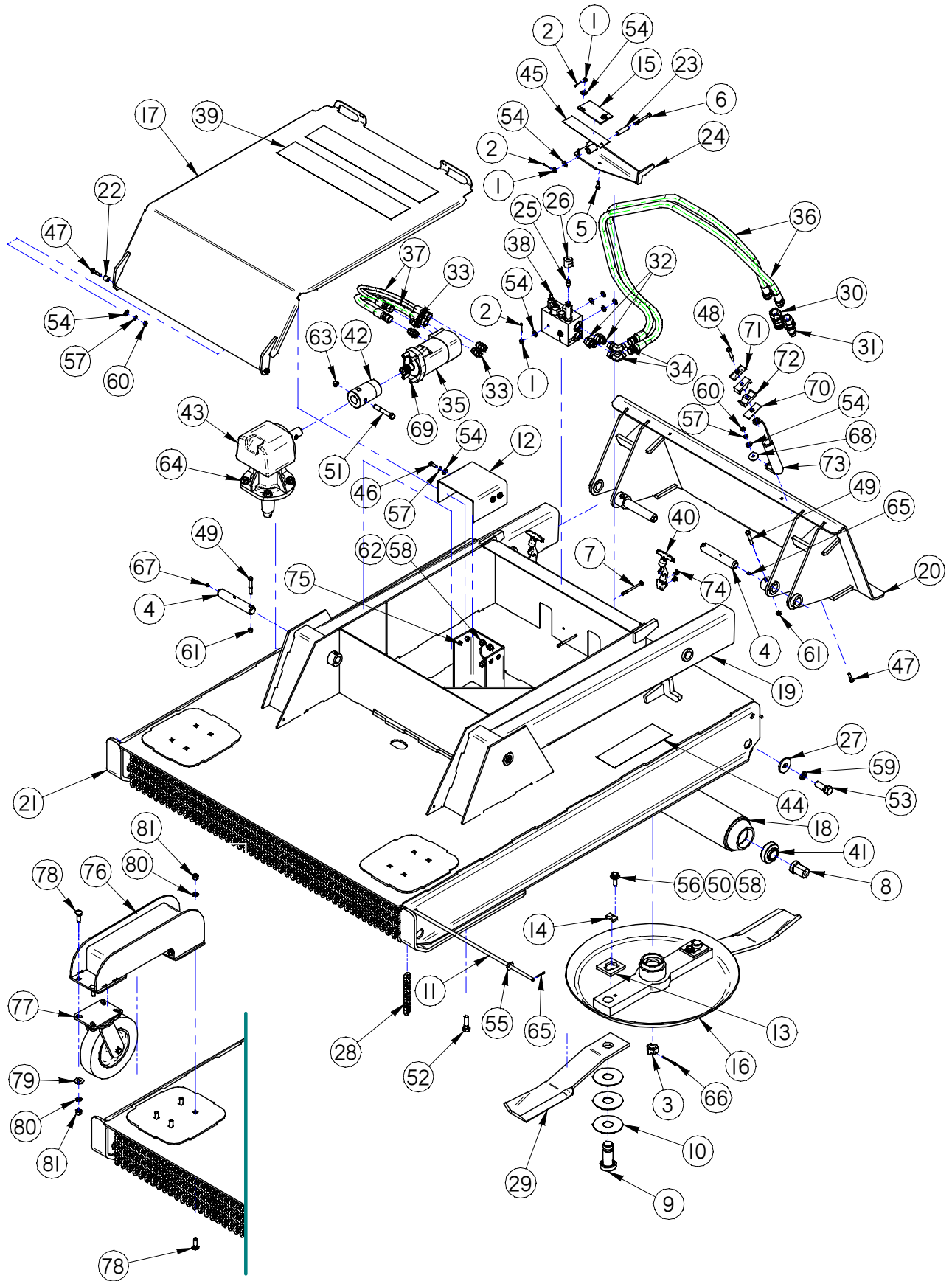
Servicing Blades

1. Perform steps 1 through 5 above and remove blades.
2. Both blades should be sharpened at the same angle as the original cutting edge and must be replaced or re-ground at the same time to maintain proper balance in the cutting unit.
3. Both blades should weigh the same after sharpening.
4. When replacing or sharpening the cutter blades, examine blade pins and washers for excessive wear and replace if necessary.

IMPORTANT: Replace blades with genuine FFC blades only. Blades must be ordered and replaced in pairs.

NOTE: The nut on gear box output shaft that attaches the blade / stump jumper assembly should be torqued to 450 to 600 foot/pounds and cotter pin installed in nut with legs securely bent around nut.

PARTS ILLUSTRATION



ROTARY BRUSH CUTTER: PARTS LIST

ITEM	QTY.	LAF3748 48"	LAF3760 60"	LAF3772 72"	DESCRIPTION
1	5			07-10016	Nut Slotted GR5 5/16-18 ZDC
2	5			07-10018	Pin Cotter 1/16 X 1-1/4
3	1			07-10022	Slotted Nut 1-14 UNC
4	4			13-50131	Pin-1.25-7.0 SP (Greaseable)
5	2			13-50187	Grade 5 Hex Head Cap Screw: 5/16" x 1" w/Hole
6	1			13-50188	Grade 5 Hex Head Cap Screw: 5/16" x 3" w/Hole
7	2			13-50189	Grade 5 Hex Head Cap Screw: 5/16" x 4" w/Hole
8	2			LAF3700	Roller Cap Pin
9	2			LAF3701	Connection Pin
10	6			LAF3702	Thrust Washer
11	1	LAF3704			Pin .438 - 49.91
			LAF3703		Pin .438 - 61.91
				LAF3705	Pin .438 - 73.91
12	1			LAF3707	Motor Cover
13	2			LAF3708	Keeper
14	2			LAF3709	Keeper Key
15	1			LAF3710	Cover Plate
16	1			LAF3711	Stump Jumper
17	1			LAF3712	Door
18	1	LAF3714	LAF3713	LAF3715	Roller
19	2	LAF3718	LAF3718	LAF3717	Link Tube
20	1			LAF3720	Back Plate
21	1	LAF3719	LAF3721	LAF3722	Main Frame
22	2			LAF3723	Tube
23	1			LAF3724	Pivot Tube
24	1			LAF3725	Spring Arm
25	1			LAF3726	Plunger
26	1			LAF3727	Plunger Guide
27	2			LAF3728	Washer
28	Varies	(37)	(47)	(57) LAF3729	Chain
29	2	LAF3794	LAF3795	LAF3796	SB Blade
30	1		Contact FFC To obtain Correct Item		Hydraulic Hose Quick Coupler: Male Connection
31	1		Contact FFC To obtain Correct Item		Hydraulic Hose Quick Coupler: Female Connection
32	2			LAF4402	Hydraulic Adapter 10MJ-12MB
33	4			LAF4414	Hydraulic Adapter 10MB-10MJ
34	2			LAF4417	90 Deg Hydraulic Elbow 10MJ-10FJ
35	1			LAF4678	Hydraulic Motor
36	2			LAF4680	HOSE .63-10FJ-12MB-96.0 SHEATHED
37	2			LAF4681	Hydraulic Hose .50 x 10FJ-10FJ x 22.0
38	1			LAF4741	Push to Shift Control Block Assy
39	2			LAF8231	Non Skid Tape 4-24
40	2			LAF9417	Flexible Draw Latch 5.25 Long
41	2			LAF9420	Triple Seal Single Row Ball Bearing
42	1			LAF9421	Shaft Coupler
43	1			LAF9424	Right Angle Drive Gear Box
44	2			LAF9447	Non Skid Tape 4-12
45	1			LAF9577	Spring Steel
46	4			RHW 1105	Grade 5 Hex Head Cap Screw: 5/16" x 1"
47	3			RHW 1108	Grade 5 Hex Head Cap Screw: 5/16" x 1-1/2"
48	1			RHW 1112	Grade 5 Hex Head Cap Screw: 5/16" x 2-1/2"
49	4			RHW 1213	Grade 5 Hex Head Cap Screw: 3/8" x 4"
50	2			RHW 1406	Grade 5 Hex Head Cap Screw: 1/2" x 1-3/4"
51	1			RHW 1413	Grade 5 Hex Head Cap Screw: 1/2" x 3-1/2"
52	4			RHW 1634	Grade 8 Hex Head Cap Screw: 5/8" x 2"
53	2			RHW 1736	Grade 8 Hex Head Cap Screw: 3/4" x 2-1/4"

NOTE: All parts are the same as the LAF3772 except for those parts numbered under the other models.

ROTARY BRUSH CUTTER: PARTS LIST

ITEM	QTY.	LAF3748 48"	LAF3760 60"	LAF3772 72"	DESCRIPTION
54	14			RHW5162	Flat Washer 5/16" USS GR5
55	2			RHW5362	Flat Washer 7/16" USS GR8
56	2			RHW5462	Flat Washer 1/2" USS GR5
57	7			RHW6102	Lock Washer 5/16" GR5
58	6			RHW6402	Lock Washer 1/2" GR5
59	2			RHW6702	Lock Washer 3/4" GR5
60	3			RHW7101	Hex Nut 5/16" GR5
61	4			RHW7203	Lock Nut Center Dent 3/8" GR5
62	4			RHW7401	Hex Nut 1/2" GR5
63	1			RHW7403	Lock Nut Center Dent 1/2" GR5
64	4			RHW7607	Lock Nut .63-11 Top Lock Flanged, GR G
65	2			RHW8011	Cotter Pin .13-1.25 GR2
66	1			RHW8017	Cotter Pin .19-2.0 GR2
67	4			RHW8090	Grease Zerk .25-28 TPI Self Tap
68	1			RHW8098	Fender Washer .08-.31-1.50 GR2
69	4			RHW8236	Allen Socket Cap Screw .50-13-1.5
70	1			RHW8613	Weld Plate F/.88 OD
71	1			RHW8614	Cover Plate F/.88 OD
72	1			RHW8616	Hose Cradle F/.88 OD
73	1			RHW8618	Hose Spring
74	4			RHW8621	Pop Rivet .19-.5 Large Flange
75	4			RHW8642	5/16" Rivet Nut .150-.312 Grip Range

NOTE: All parts are the same as the LAF3772 except for those parts numbered under the other models.

OPTIONAL FRONT WHEEL KIT: PARTS LIST

ITEM	QTY.	LAF3750	DESCRIPTION
76	2	LAF3730	Caster Mount
77	2	LAF9499	Caster Wheel Assembly
78	16	RHW2405	Carr Bolt: 1/2-13 x 1-1/2" GR5
79	8	RHW5462	Flat Washer 1/2" GR5
80	16	RHW6402	Lock Washer 1/2" GR5
81	16	RHW7401	Hex Nut 1/2" GR5

ROTARY BRUSH CUTTER SPECIFICATIONS

Model Number	Cutting Width	Overall Width	Overall Height	Overall Depth	*Blade Tip Speed ft/Min @ 20 gpm & 882 rpm	Shipping Weight
LAF3748	48"	51-1/2"	26"	77-1/2"	11,088	1306 lbs.
LAF3760	60"	63-1/2"	26"	83-1/2"	13,860	1424 lbs.
LAF3772	72"	75-1/2"	26"	95-1/2"	16,632	1605 lbs.

All replacement hydraulic hoses must have a minimum rated working pressure of 4,000 psi.

* **NOTE:** All models have a blade tip speed limiting feature. The hydraulic circuit will not allow more than 23 gpm to the motor which maintains a safe tip speed range.

TORQUE SPECIFICATIONS FOR STANDARD MACHINE HARDWARE

(FOR REFERENCE ONLY)

Bolt Size	SAE Grade Bolt	Torque Ft./Lbs
0.31 - 18	5	17
0.50 - 13	5	75
0.75 - 10	5	260



SWEEPSTER Limited 12 Month Warranty

Thank you for purchasing a Sweepster product. Warranty protection is valid only when this Warranty Registration is completed and signed by the customer and dealer, and mailed to Sweepster. I hereby acknowledge that I have received a copy of the Owners Limited Warranty and I accept the terms therein.

For a period of **12** months from date of delivery of product to the original user, Sweepster, LLC. of Dexter, Michigan warrants each product to be free from manufacturing defects, subject to the limitations contained in this policy.

This warranty does not apply to defect caused, in whole or in part, by unreasonable use while in the possession of the user, including, but not limited to: failure to properly set up product; failure to provide reasonable and necessary maintenance; normal wear; routine tune ups or adjustments; improper handling or accidents; operation at speed or load conditions contrary to published specification; improper or insufficient lubrication; improper storage. This warranty is also not a guarantee that the performance of each product will meet the expectations of the purchaser.

Sweepster, LLC. shall not be liable for consequential damages of any kind, including, but not limited to: consequential labor costs or transportation charges in connection with the replacement or repair of defective parts; lost time or expense which may have accrued because of said defects. In no event shall Sweepster, LLC.'s total liability hereunder exceed the product purchase price.

Sweepster, LLC. makes no warranty with respect to trade accessories or any component or accessory of the product which was not manufactured by Sweepster, Inc. including any purchased components on any kind. These are subject to the warranties of their respective manufacturers. The warranty will be considered void if the product or any part of the product is modified or repaired in any way not expressly authorized by Sweepster, Inc., or if closed components are disassembled prior to return. Closed components include, but are not limited to: gearboxes, hydraulic pumps, motors, cylinders, and actuators.

Our obligation under the warranty is expressly limited, at our option, to the replacement or repair at Sweepster, LLC. of Dexter, Michigan, or at a service facility designated by us, or such part or parts as inspection shall disclosed to have been defective. We are not responsible for unauthorized repairs or replacements. Any implied or statutory warranties, including any warranty of merchantability or fitness for a particular purpose, are expressly limited to the duration of this written warranty. We make no other express or implied warranty, nor is anyone authorized to make any in our behalf. This warranty cannot be extended, broadened, or changed except in writing by an authorized officer of Sweepster, LLC.

PLEASE FOLD AFFIX TAPE HERE DO NOT TAPE ALL EDGES OR STAPLE



Warranty Registration Form and Delivery Inspection Report

IMPORTANT! Warranty Void if card is not returned within 10 days.
All Applicable sections **must** be filled in.

This section to be filled out and signed by Dealer at time of delivery.

Warranty Registration

Customer's Name _____	Dealer's Name _____
Address _____	Address _____
City _____	City _____
State, Zip _____	State, Zip _____
Phone Number (____) _____	CHECK ONE:
Loader / Tractor Model _____	Construction Use _____
Delivery Date _____	Agricultural Use _____
Model or Part # _____	Landscape / Nursery Use _____
Serial or Lot # _____	Other: _____

Dealer Inspection (check items applicable)

_____ All Decals installed (see operator's manual)	_____ Review Operating and Safety Instructions
_____ Hydraulic fittings tight and free of leaks	_____ Guards and covers in place and secure
_____ Fasteners tight	_____ Does Product Function Properly

FOLD HERE

I have thoroughly instructed the buyer on the above described equipment. This review included: The Operator's Manual content, equipment care, adjustments, safe operation and applicable warranty policy.

Date _____ Dealer's Rep. Signature _____

This section to be completed and signed by the customer

QUALITY ASSURANCE RATING Question	1	2	3	4	5
	Excellent	Good	Average	Unsatisfactory	Poor
Quality of Product: Appearance	_____	_____	_____	_____	_____
Construction	_____	_____	_____	_____	_____
Quality of Service	_____	_____	_____	_____	_____
Value (Priced Fairly).....	_____	_____	_____	_____	_____
Does it Perform as Claimed	_____	_____	_____	_____	_____

The above described equipment and Operator's Manual have been received by me and I have been thoroughly instructed as to care, adjustments, safe operation and applicable warranty policy.

Date _____ Owner's Signature _____

NOTE! Make one copy each for the dealer's and owner's records. Mail original to FFC.

Form #Q1021 REV 7/20/01