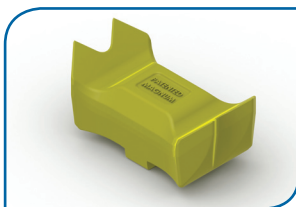




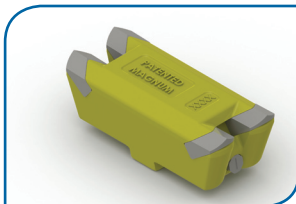
MH88 MULCHER

For 300-400 HP Prime Movers

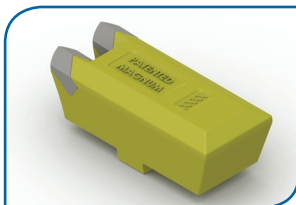
Features	Advantages	Benefits
Heavy Duty Bent Axis Variable Displacement Piston Motor	Variable displacement piston motor offers better performance and allows mulcher to be switched easily to other prime movers without having to change out hydraulic motors, belts, or belt drive sprockets/pulleys	Motor Provides Maximum Torque On Demand; Faster Recovery Time
Synchronous Belt Drive System	Belt design eliminates belt and belt drive sprocket slippage	Lower Operating Costs, Less Maintenance
Patented Tooth Design, Inter-changeable Tooth Design Options	Patented tooth has a cross bar across the full width of tooth to help retain tooth in tooth holder. Reversible carbide teeth and claw teeth can easily be interchanged without the need of rebalancing the rotor	Additional Set of Teeth Doubles Operational Life; Easy Switch Out to Opposite Cutting Edge



Reversible Claw Tooth



Reversible Carbide Tooth



Non-Reversible Carbide Tooth

MH88 MULCHER

Additional Features:

- 88" Cutting width
- 300 HP High Flow (100-120 GPM)
- 400 HP High Flow (120-135 GPM)
- Shreds up to 20" diameter hardwood trees
- Fixed tool holders with replaceable teeth

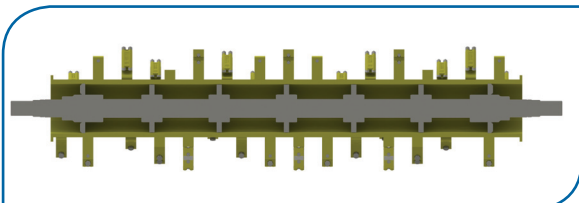
Specifications	MH88-3H	MH88-4H
Overall Width	106.5"	106.5"
Overall Height	75.25"	75.25"
Overall Length	59.75"	59.75"
Cutting Width	88"	88"
Height w/o Push Over Bar	43.13"	43.13"
Length w/o Push Over Bar	46.63"	46.63"
Minimum Push Bar Angle	10°	10°
Push Bar Working Range	80°	80°
Operating Pressure (PSI)	5000-5800	5000-5800
Hydraulic Flow (GPM)	100-120	120-135
Recommended Hydraulic Horsepower (HP)	275-350	350-425
Number of Teeth	64	64
Weight (lbs) (not including mount)	6850	6850
Auxiliary Hydraulic Circuit		
Maximum Operating Pressure (PSI)	3000	3000
Maximum Hydraulic Flow (GPM)	16	16
Cylinder Specifications	Deflector Door	Push Over Bar
Bore	2.00"	2.75"
Rod Diameter	1.25"	1.75"
Stroke	14.56"	20.00"

MULCHERS

- Heavy duty hydraulically-controlled push bar has three curved sections with serrated teeth designed to dig into the tree and control the direction of fall
- Replaceable abrasion resistant AR400 wear plate on skid shoes
- Deflector door standard to control particle size and discharge direction
- Five heavy duty grapple teeth mounted on deflector door drag smaller material back into clearing zone
- Designed to operate at 1500 rpm



Heavy Duty Grapple Teeth



Heavy duty rotor construction; balanced 3.5" high strength alloy steel shaft through entire length of rotor; new rotor spiral cut pattern cuts the entire length of rotor and reduces the amount of cut per tooth maximizing efficiency

Subject to change without notice.

MulcherMH88_0512-1 © 2012 Paladin Powerful Attachment Tools